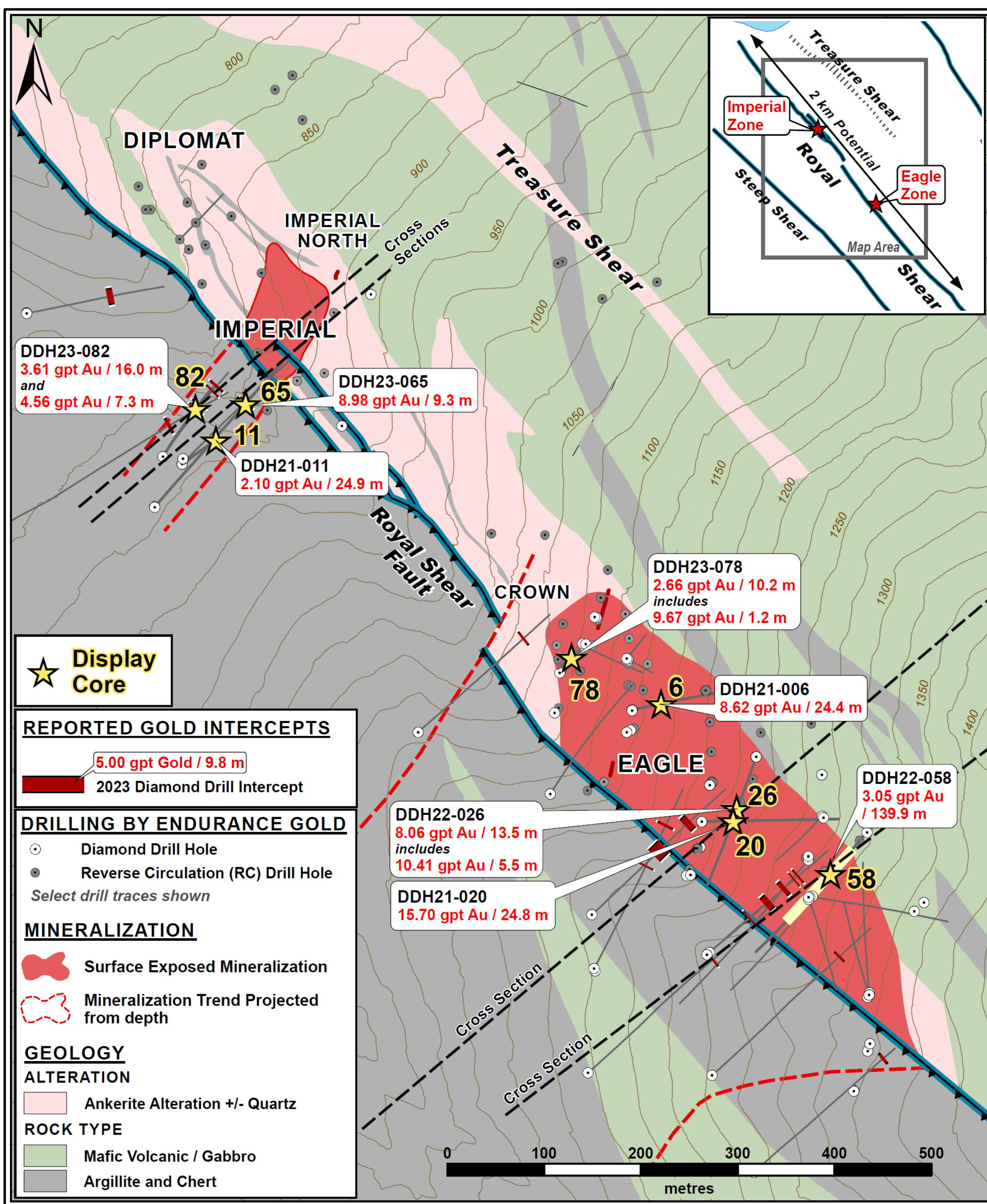
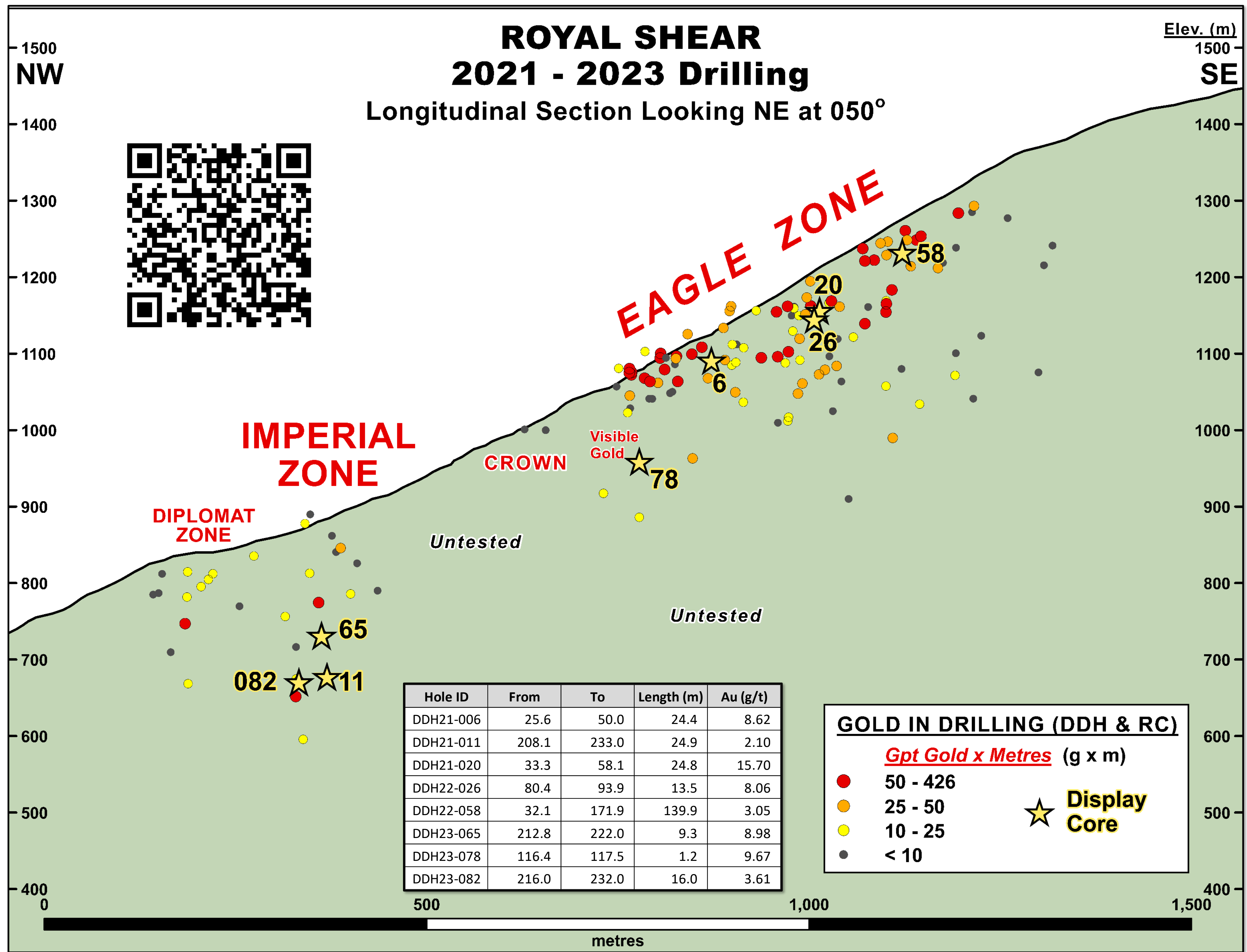


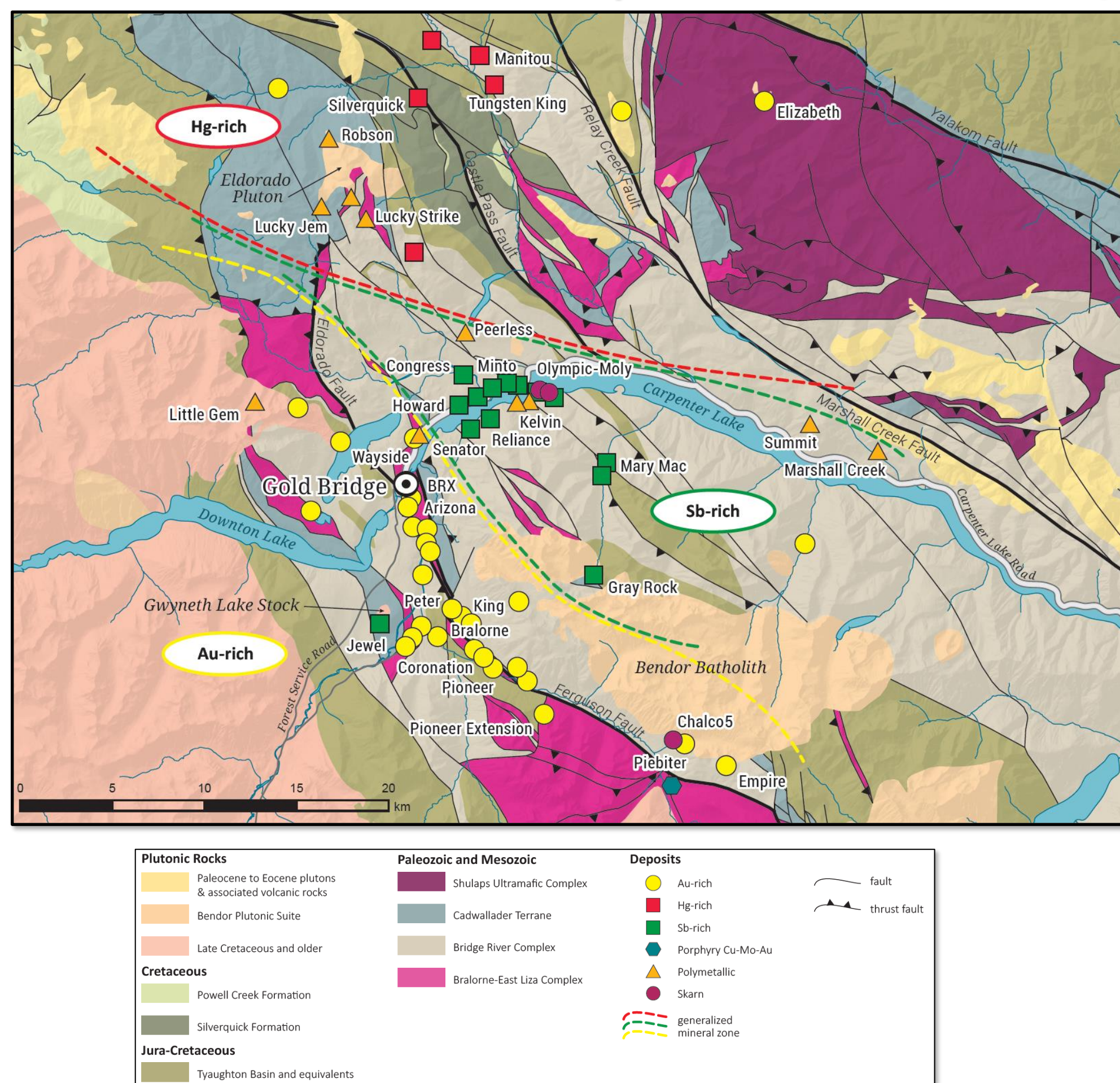
DRILLING PLAN MAP



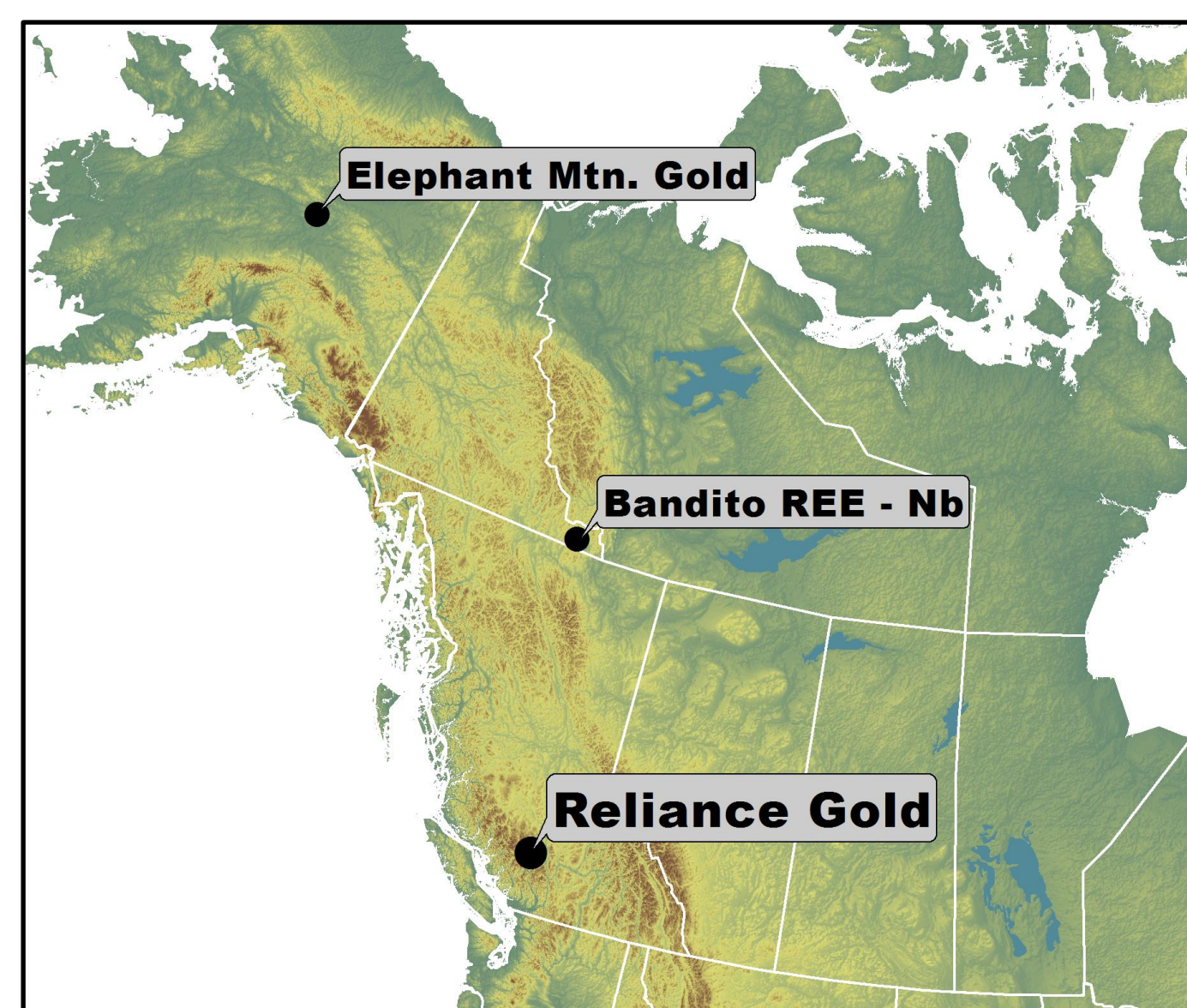
ROYAL SHEAR LONG SECTION



REGIONAL GEOLOGY (Hart & Goldfarb 2017)



82 Diamond Drill Holes Completed
59 of 82 holes returned >10 gram*m and >3 m width
15 of 82 holes returned >70 gram*m



RELIANCE PROJECT, BC BEST DIAMOND DRILLHOLES 2021 to 2023

| Zone & DDH | From | g/t X m | Au g/t / Metre |
|-------------------|-------|---------|-------------------|
| Eagle - 22-058 | 32.1 | 426 | 3.05 gpt / 139.9m |
| Eagle - 21-020 | 33.3 | 389 | 15.70 gpt / 24.8m |
| Imperial - 21-009 | 161.0 | 210 | 8.47 gpt / 24.9m |
| Eagle - 21-006 | 25.6 | 210 | 8.62 gpt / 24.4m |
| Eagle - 23-076 | 9.3 | 133 | 5.80 gpt / 23.0m |
| Eagle - 22-027 | 109.2 | 124 | 4.16 gpt / 30.0m |
| Eagle - 22-026 | 80.4 | 108 | 8.06 gpt / 13.5m |
| Eagle - 22-024 | 27.0 | 100 | 8.41 gpt / 12.0m |
| Eagle - 22-036 | 35.4 | 97 | 7.65 gpt / 12.7m |
| Eagle - 22-031 | 124.9 | 90 | 7.58 gpt / 11.9m |
| Eagle - 22-045 | 35.1 | 84 | 7.31 gpt / 11.6m |
| Eagle - 21-004 | 1.0 | 84 | 4.44 gpt / 19.0m |
| Imperial - 23-065 | 212.8 | 83 | 8.98 gpt / 9.3m |
| Eagle - 22-028 | 97.0 | 82 | 2.59 gpt / 31.6m |
| Imperial - 23-066 | 306.5 | 72 | 17.28 gpt / 4.2m |