

ENDURANCE GOLD

Reliance Gold Project Gold Bridge, B.C.

**PDAC Investors Exchange
March 5, 2024**

EDG: TSX.V
ENDGF: OTC Pink
Frankfurt: 3EG



Corporate Disclosure

The information contained herein, while obtained from sources which we believe are reliable, is not guaranteed as to its accuracy or completeness. The company is an exploration stage mineral resource exploration company and none of its mineral projects have yet to be proven to be economic. The contents of this presentation is for information purposes only and does not constitute an offer to sell or a solicitation to purchase any securities referred to herein.

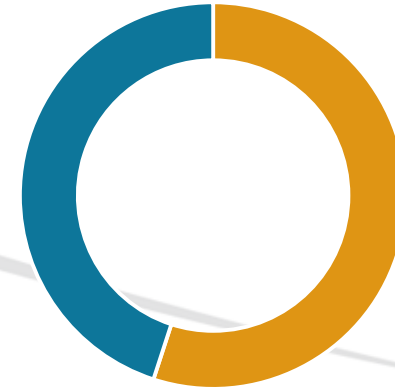
Forward-looking Statements

This presentation contains “forward-looking information” within the meaning of applicable Canadian securities regulations. All statements other than statements of historical fact herein, including, without limitation, statements regarding the company’s plans, goals or objectives and future exploration, development, potential mineralization, exploration results and future plans are forward-looking statements that involve various risks and uncertainties. There can be no assurance that such statements will prove to be accurate, and actual results and future events could differ materially from those anticipated in such statements. Readers are advised not to place an undue reliance on forward-looking statements.

Corporate Snapshot

Shares Outstanding (Feb 26, 2024)	151.7m
Market Capitalization (C\$0.12 – Feb 26, 2024)	C\$18.2 m
Options (C\$0.05 – C\$0.34)	7.6 m
Warrants (C\$0.42 – C\$0.55)	4.2 m
Fully Diluted (Feb 26, 2024)	163.5 m
Working Capital (Sep 30, 2023)	C\$2.59 m*

* includes marketable securities



**Insiders
own
over 55%**

Key People

Robert T. Boyd
President, CEO & Director

Darren O'Brien
Vice President Exploration

Teresa Cheng
CFO & Corporate Secretary

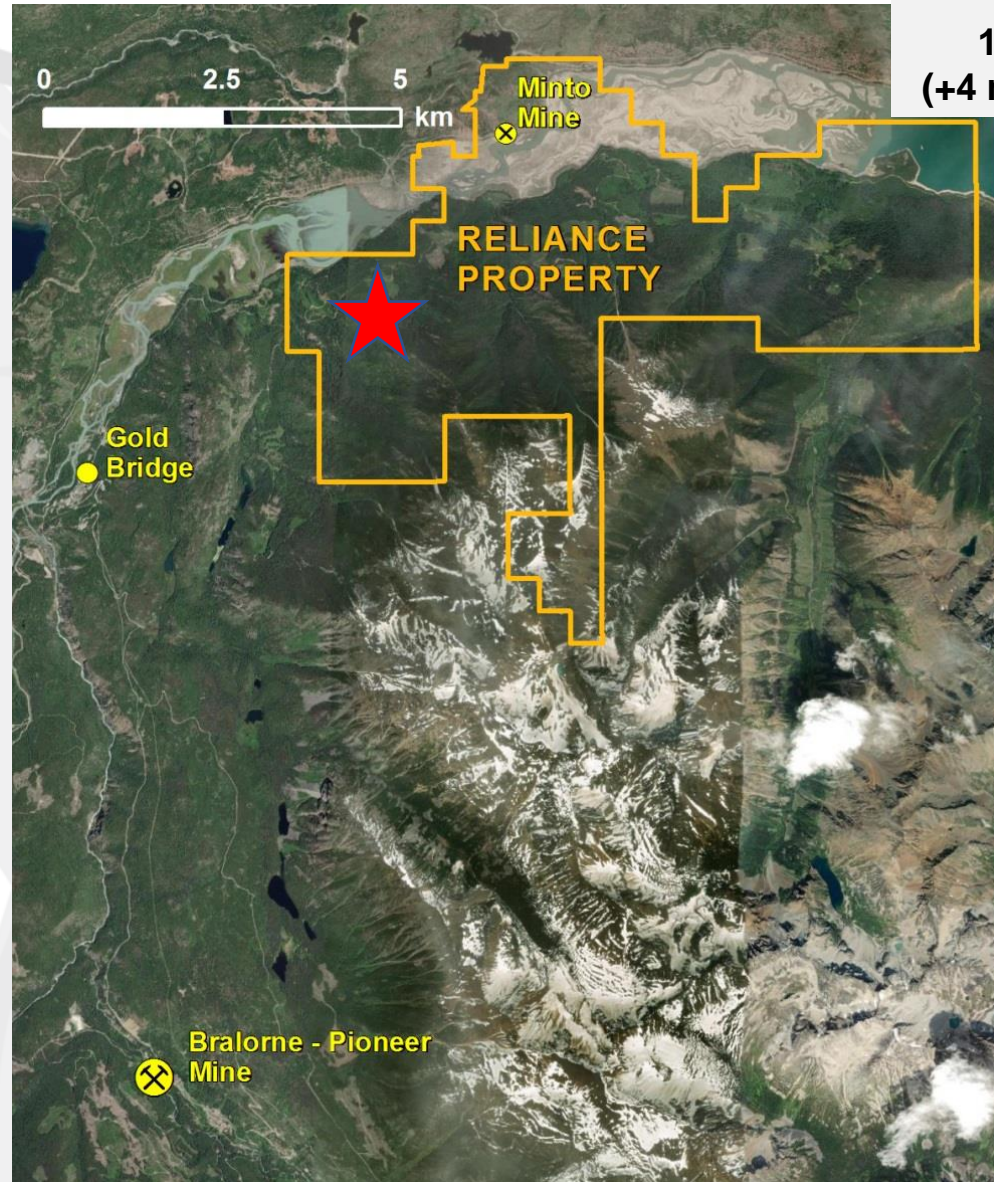
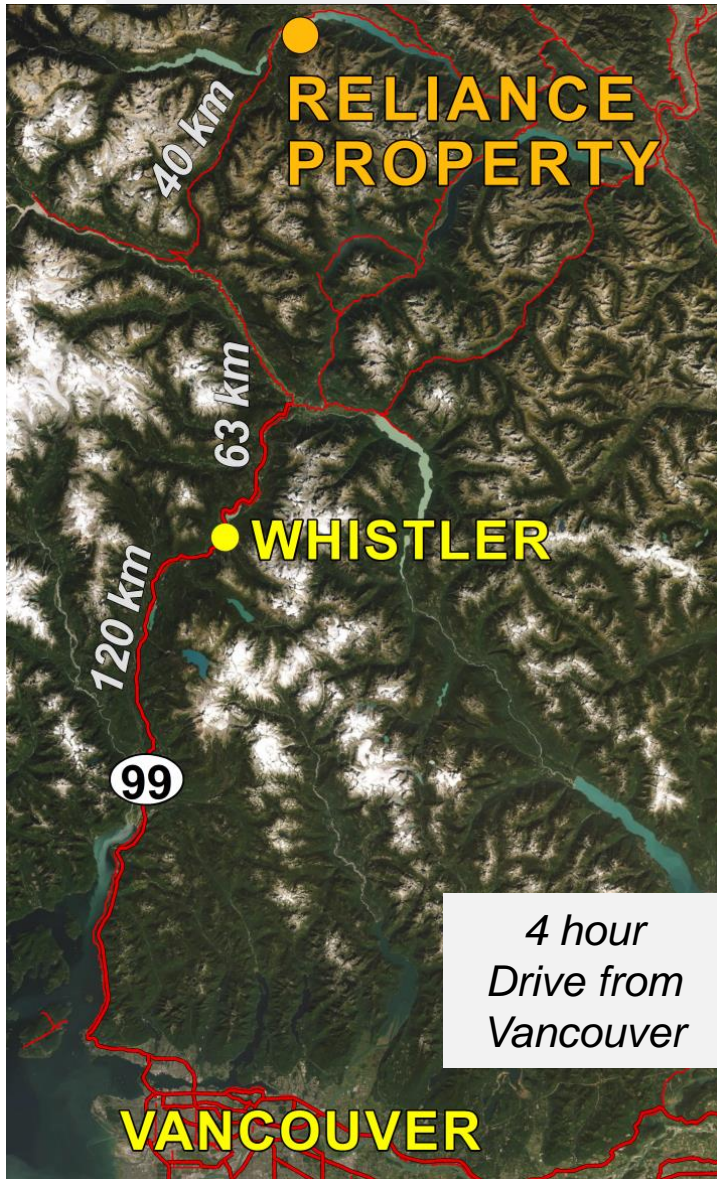
Richard Gilliam
Director

H. Ross Arnold
Director

Robert Pease
Director

J. Christopher Mitchell
Director

Reliance Gold Project Bralorne Camp, Gold Bridge, B.C.



New Surface Discovery
10 km from historic Bralorne Camp
(+4 million ounces of historic production)

 **Imperial and Eagle Zones**

Reliance Gold Project, Gold Bridge, B.C.

Program Activity Highlights 2020 to 2023

“Discovery Stage” Gold Project in a productive gold camp.

1. Early Exploration between 1985 and 2008 - limited focus over about 100 m - Never systematically explored
2. Since 2020 – Expanded potential to 2 km – defined **four significant gold trends**
3. 2020 to 2022 – Surface channel sampling - **Excellent Surface Results**
4. 2020, 2021 & 2022 - Reverse Circulation (‘RC’) drilling - **84 RC holes**
5. 2021 to 2023 - **82 Diamond Drill Holes** at Eagle & Imperial Zones
6. **Excellent drilling Results statistics**
7. Focus to date - Eagle Expanded to 550 m strike – Deep +30 m Imperial Zone
8. **Future Drilling – to grow on Strike and at Depth**

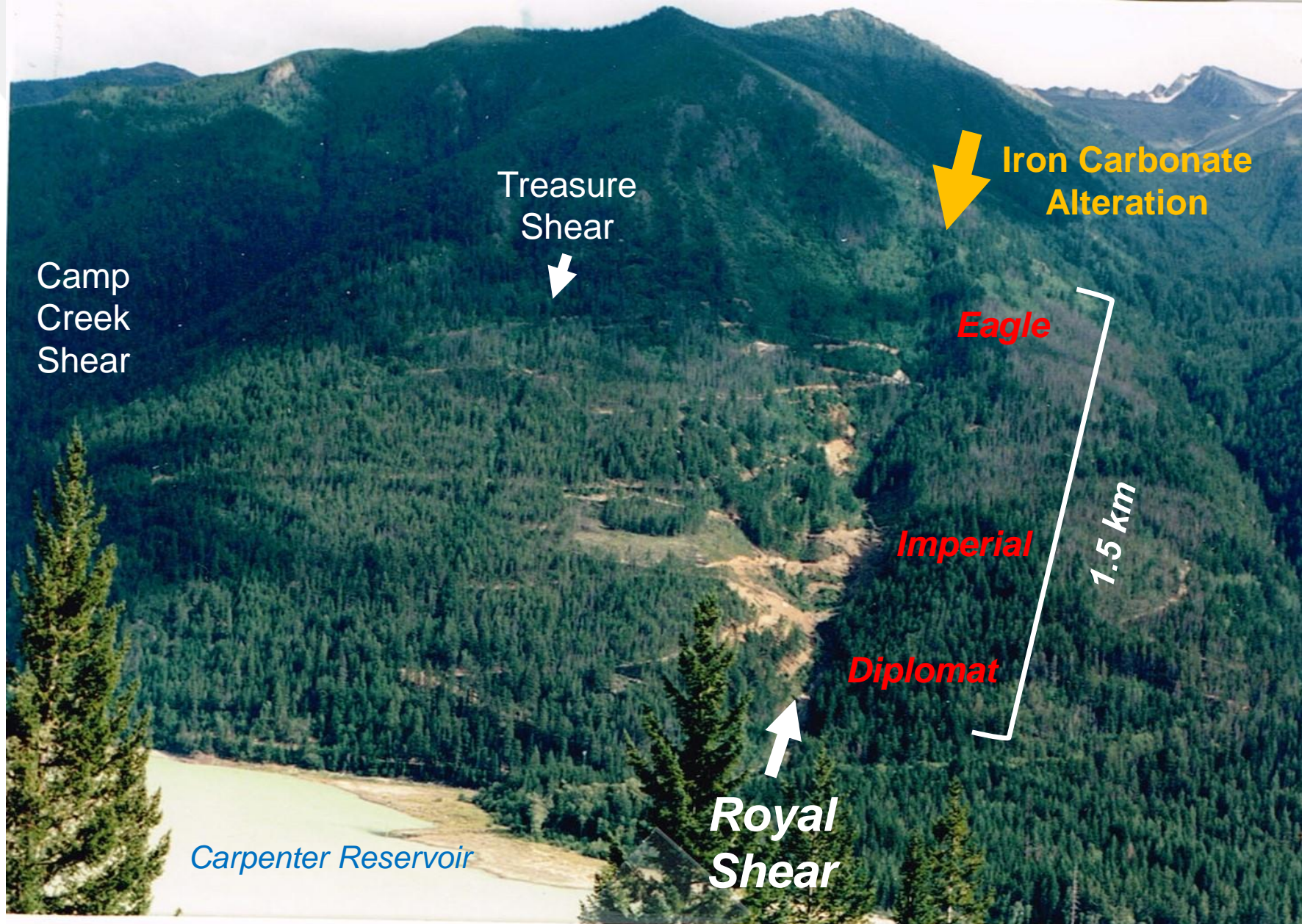
Reliance Gold Project, B.C.

Best Diamond Drill Holes 2021 to 2023

<u>Zone & DDH</u>	<u>From</u>	<u>g/t X m</u>	<u>Au g/t / Metre</u>
Eagle - 22-058	32.1	426	3.05 gpt / 139.9m
Eagle - 21-020	33.3	389	15.70 gpt / 24.8m
Imperial - 21-009	161.0	210	8.47 gpt / 24.9m
Eagle - 21-006	25.6	210	8.62 gpt / 24.4m
Eagle - 23-076	9.3	133	5.80 gpt / 23.0m
Eagle - 22-027	109.2	124	4.16 gpt / 30.0m
Eagle - 22-026	80.4	108	8.06 gpt / 13.5m
Eagle - 22-024	27.0	100	8.41 gpt / 12.0m
Eagle - 22-036	35.4	97	7.65 gpt / 12.7m
Eagle - 22-031	124.9	90	7.58 gpt / 11.9m
Eagle - 22-045	35.1	84	7.31 gpt / 11.6m
Eagle - 21-004	1.0	84	4.44 gpt / 19.0m
Imperial - 23-065	212.8	83	8.98 gpt / 9.3m
Eagle - 22-028	97.0	82	2.59 gpt / 31.6m
Imperial - 23-066	306.5	72	17.28 gpt / 4.2m

Reliance Gold Project

Bralorne Camp, Gold Bridge, B.C.



Reliance Gold Project, B.C.

2020, 2021 & 2022 RC Drilling

- Completed **84 RC** Drill Holes in 2020, 2021 and spring 2022.
- Significant gold intersections in **majority of the RC holes** (ie gold over greater than 3 m width) - with some excellent results such as:
 - 14.08 gpt Gold / 15.24 m & 8.57 gpt Gold / 10.66 m**
- EAGLE Upper Zone – now **550 x 150 m area** – shallower dipping shear defined by over 70 holes (RC & DDH) with:
 - AVERAGE 5.17 gpt Gold over average intersection width of 9.6 m**
- EAGLE Feeder Zone – Steeper Dipping Structural/Intrusive Corridor- Identified over 550 m trend with:
 - 15.7 gpt Gold over 24.8 m (DDH)**
 - Other subparallel mineralized trends with: **8.41 gpt Gold / 12 m (DDH), 3.89 gpt Gold / 30.48 m (RC)**
- IMPERIAL Zone – Up plunge Intersection - **7.23 gpt Gold / 4.6 m**
- DIPLOMAT Zone - **16.49 gpt Gold / 4.57 m**

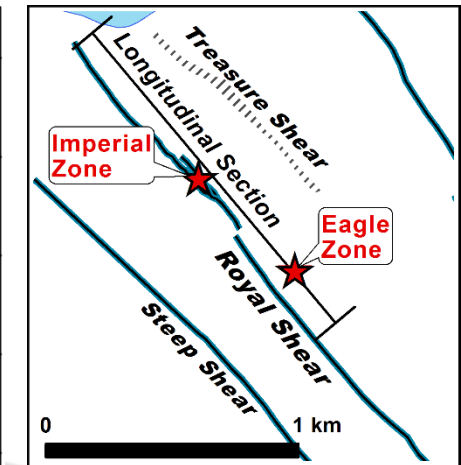
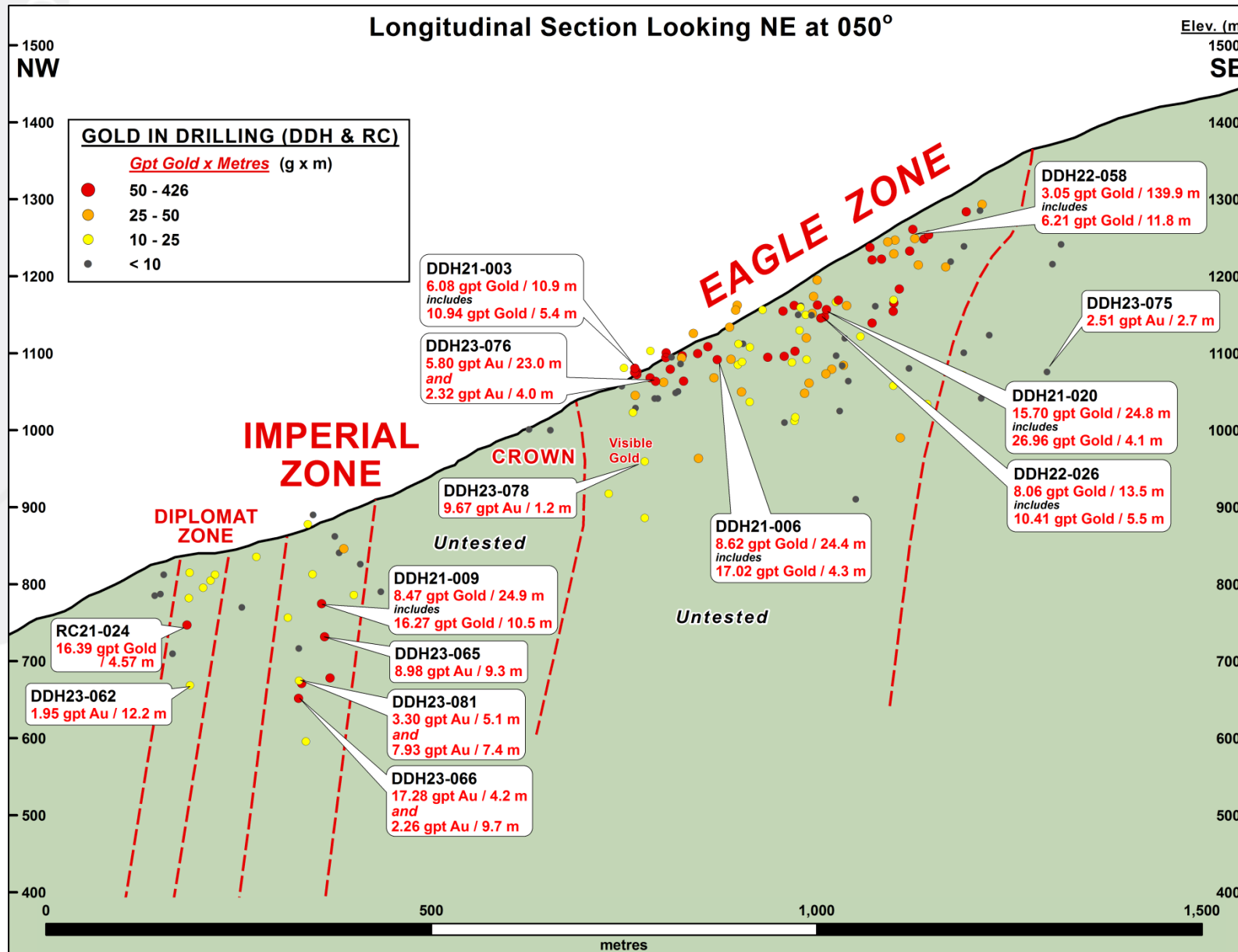
Reliance Gold Project, B.C.

2021 to 2023 DDH Statistics

1. Completed **82 Diamond** Drill Holes between 2021 to 2023
2. Majority of Drill holes at the **Eagle Area – SIGNIFICANT DISCOVERY**
 - **15.7 gpt Gold / 24.8 m** including **26.96 gpt Gold / 4.1 m**
 - **8.62 gpt Gold / 24.4 m** including **17.02 gpt Gold / 4.3 m**
 - **8.41 gpt Gold / 12.0 m, 8.05 gpt Gold / 13.0 m.**
 - **3.05 gpt Gold / 139.9 m, 4.16 gpt Gold / 30.0 m, 5.8 gpt Gold / 23 m**
3. 11 Diamond Drill holes at the **Imperial Zone** – majority mineralized
 - **8.47 gpt Gold / 24.9 m** including **16.27 gpt Gold / 10.5 m**
 - **8.98 gpt Gold / 9.3 m** including **12.44 gpt Gold / 6.0 m**
 - **17.28 gpt Gold / 4.2 m** including **35.20 gpt Gold / 1.3 m**
4. 59 of 82 total drill holes have significant intersections (>10 gram X m and >3 m width)
5. 15 of 82 total drill holes have excellent drill intersections (63 to 426 gram X metre)

Reliance Gold Project, B.C.

Royal Shear Longitudinal Section – Open to Depth & Strike



Reliance Gold Project, B.C.

Royal Shear Geology & Cross Sections

REPORTED GOLD INTERCEPTS

5.00 gpt Gold / 9.8 m

2023 Diamond Drill Intercept

DRILLING BY ENDURANCE GOLD

- Diamond Drill Hole
 - Reverse Circulation (RC) Drill Hole
- Select drill traces shown **Au = Gold**

MINERALIZATION

- Surface Exposed Mineralization
- Mineralization Trend Projected from depth

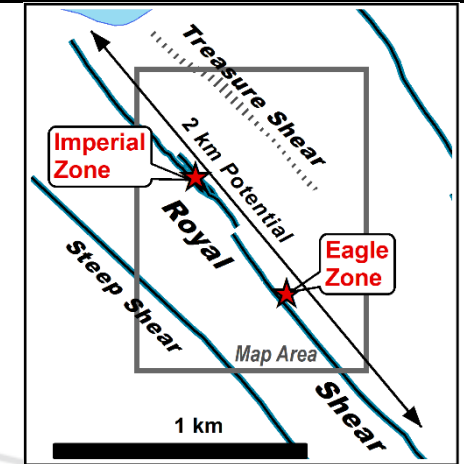
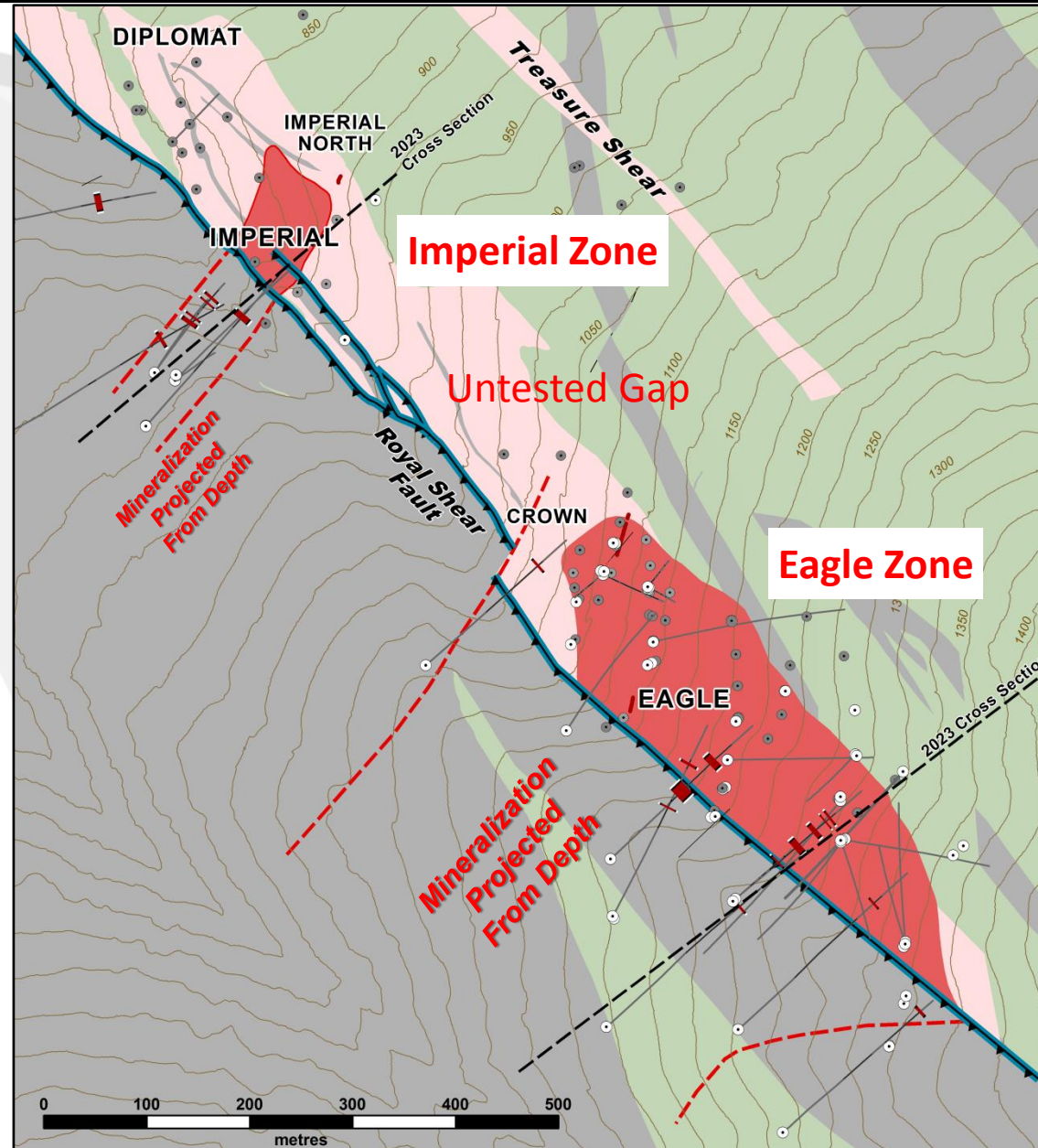
GEOLOGY

ALTERATION

- Ankerite Alteration +/- Quartz

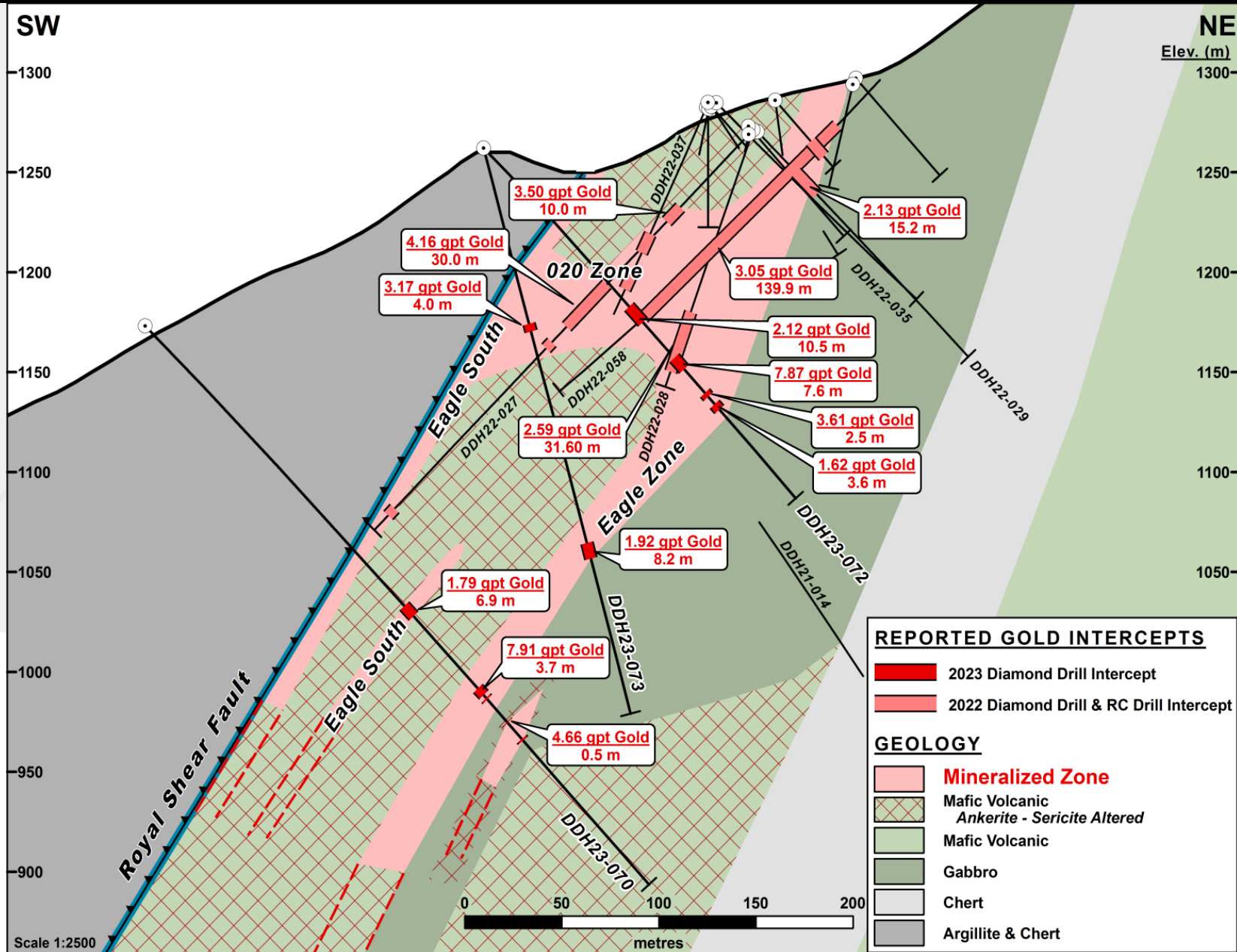
ROCK TYPE

- Mafic Volcanic / Gabbro
- Argillite and Chert



Reliance Gold Project, B.C.

Eagle Zone Cross Section DDH23-070, -072, -073



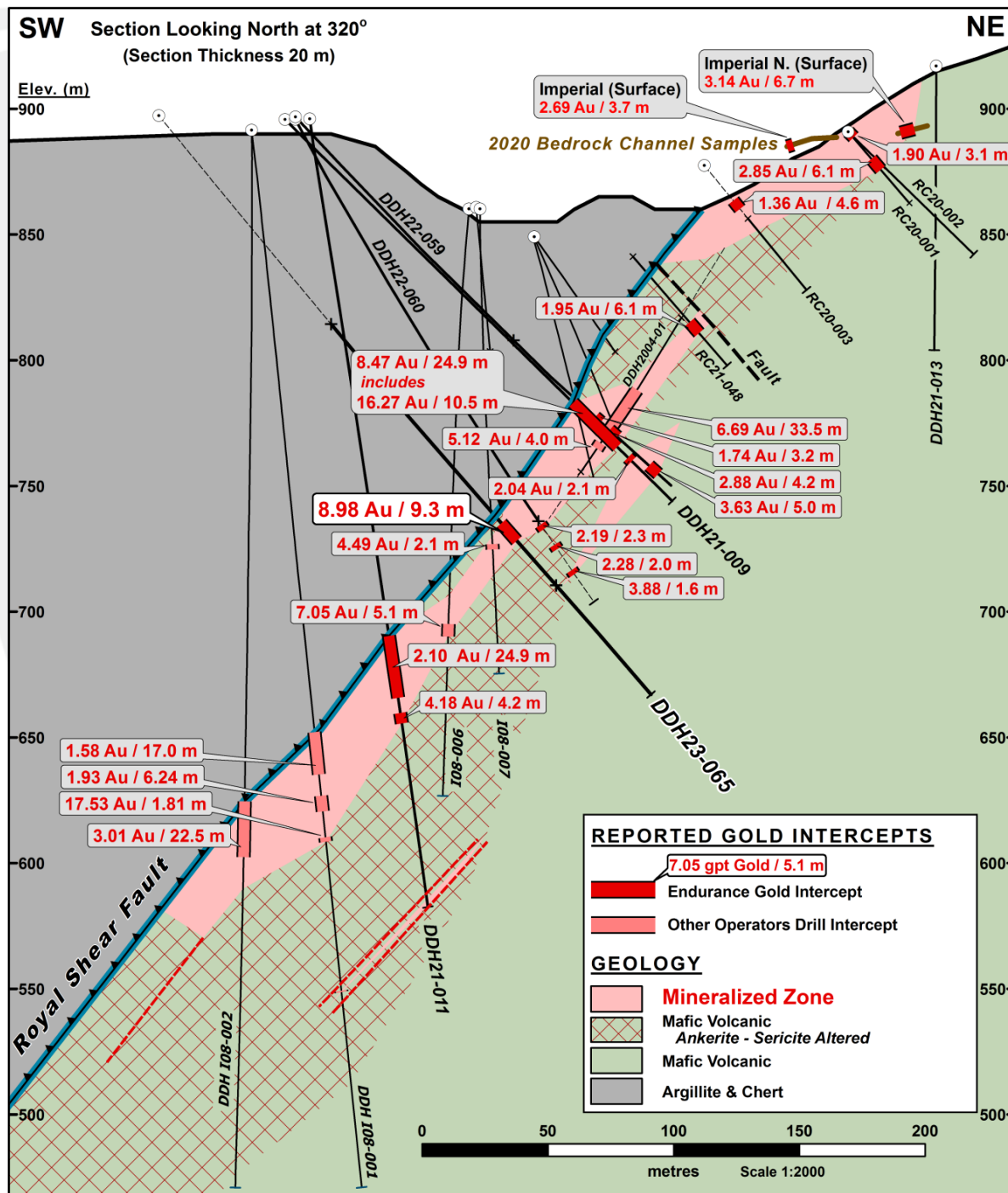
Reliance Gold Project, B.C.

Imperial Zone

2023 Drill Cross-Section

DDH23-065

**Imperial Area open
at Depth and
along strike**



Reliance Gold Project, B.C.

Drill Core Highlights – Eagle-Crown Mineralized Target Types

Gold - Arsenopyrite Quartz Breccia (Cataclastite) **6.19 gpt Gold / 0.85 m**

DDH22-027
@ 116.4m



Visible Gold
in
“Coxcomb” Quartz
Vein Breccia
9.67 gpt Gold / 1.2 m

Gold - Aspy “Coxcomb” Quartz Breccia **14.35 gpt Gold / 2.0 m**

DDH22-031
@ 128 m



Reliance Gold Project, B.C. 2021 Drill Core Highlights – Eagle South “Feeder Zone”

DDH21-020 **15.7 gpt Gold / 24.8 m**

MINERALIZED BRECCIA TEXTURES



@37 m

4.99 gpt Gold over 2.0 m



@49 m

**27.5 gpt Gold /
2.1 m**



@54 m

16.15 gpt Gold over 2.0 m



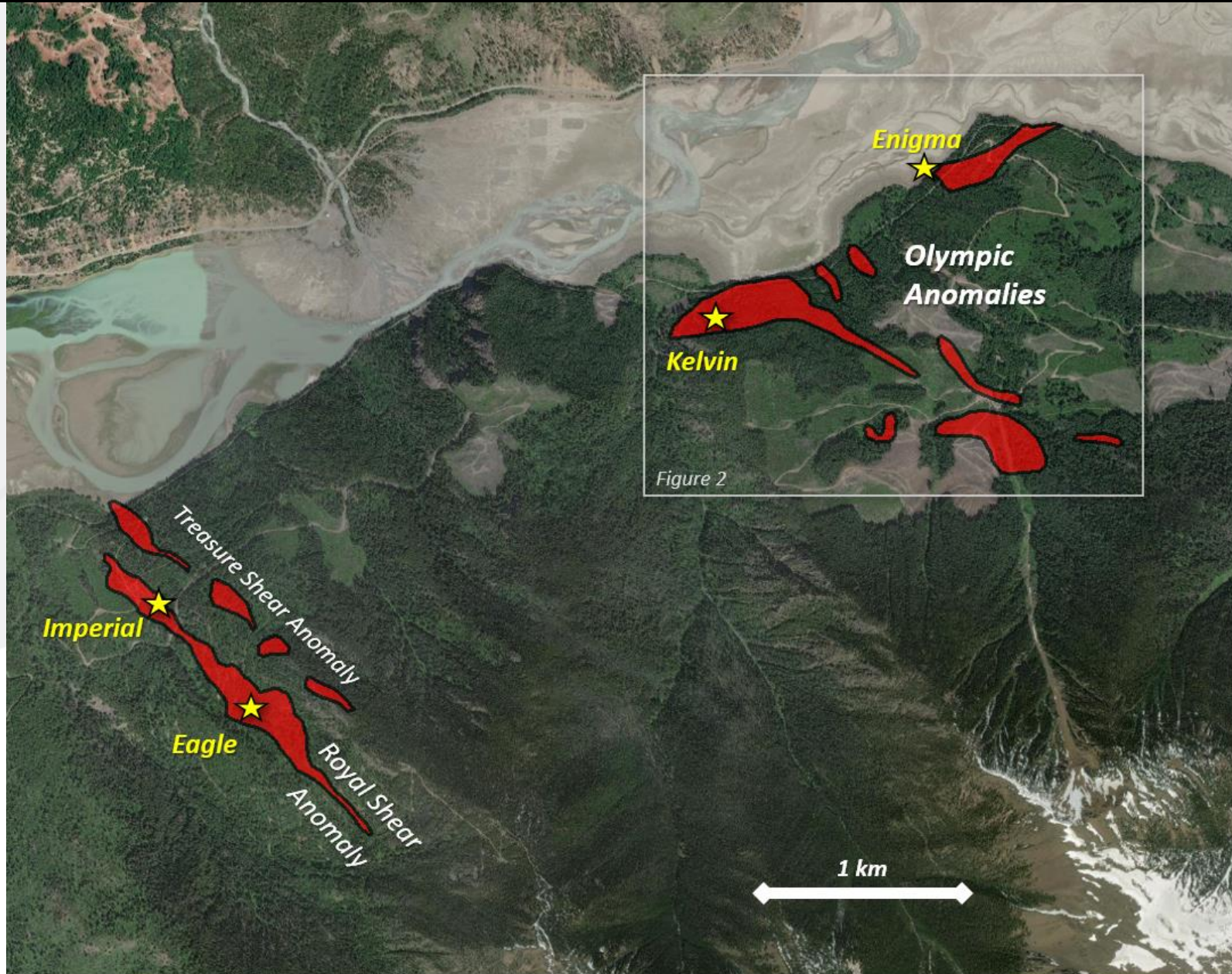
@58 m

15.55 gpt Gold over 0.7 m

NQ Core Diameter

ENDURANCE GOLD

Reliance Gold Project, B.C. Eagle, Imperial & the Olympic Geochemical Anomalies



Reliance Gold Project, B.C.

Conclusions and The Future

1. An outstanding New Exploration Discovery in an historically productive multi-million ounce Orogenic Gold Camp.
2. Wide pervasive iron-carbonate sericite alteration, sulphidization, breccia, and antimony indicate an “Epizonal” Orogenic setting in a “brittle” structural regime – Epizonal comparables to Fosterville, Australia and recent Newfoundland discoveries.
3. Model provides potential for a major gold system with depth continuity.
4. RC & DDH Drilling has delivered a high percentage of significant and excellent intersections.
5. The Eagle Zone is now 550 m – **Open at depth and along strike**
6. **2023 Diamond Drilling has expanded Imperial and Eagle**
7. **New parallel structure targets (Olympic) – Upgrade to drill targets**

ENDURANCE GOLD

www.endurancegold.com

Robert T. Boyd, P.Geo. is a qualified person as defined in National Instrument 43-101 and supervised the compilation of the information forming the basis for this summary. Any historic data summarized in this presentation should not be relied upon.

Suite 1212 – 666 Burrard Street
Vancouver, B.C. V6C 2X8 Canada
Toll Free Phone: 877-624-2237

EDG: TSX.V | ENGF: OTC Pink | Frankfurt: 3EG

ENDURANCE GOLD