



North American Focused Gold Exploration Company

October 2024



EDG: TSX.V | ENGF: OTC Pink | Frankfurt: 3EG

Corporate Disclosure

The information contained herein, while obtained from sources which we believe are reliable, is not guaranteed as to its accuracy or completeness. The company is an exploration stage mineral resource exploration company and none of its mineral projects have yet to be proven to be economic. The contents of this presentation is for information purposes only and does not constitute an offer to sell or a solicitation to purchase any securities referred to herein.

Forward-looking Statements

This presentation contains “forward-looking information” within the meaning of applicable Canadian securities regulations. All statements other than statements of historical fact herein, including, without limitation, statements regarding the company’s plans, goals or objectives and future exploration, development, potential mineralization, exploration results and future plans are forward-looking statements that involve various risks and uncertainties. There can be no assurance that such statements will prove to be accurate, and actual results and future events could differ materially from those anticipated in such statements. Readers are advised not to place an undue reliance on forward-looking statements.

Corporate Snapshot

Shares Outstanding <i>(Oct. 16, 2024)</i>	173.2m
Market Capitalization <i>(C\$0.14 – Oct. 16, 2024)</i>	C\$24.2 m
Options <i>(C\$0.20 – C\$0.34)</i>	10.0 m
Warrants <i>(C\$0.32 – C\$0.55)</i>	14.2 m
Fully Diluted <i>(Oct. 16, 2024)</i>	197.4 m
Working Capital <i>(Oct. 16, 2024)</i>	C\$5.96 m*

* includes marketable securities



**Insiders
own
over 60%**

Key People

Robert T. Boyd
President, CEO & Director

Darren O'Brien
Vice President Exploration

Teresa Cheng
CFO & Corporate Secretary

Richard Gilliam
Director

H. Ross Arnold
Director

Robert Pease
Director

J. Christopher Mitchell
Director

Endurance Gold Corporation – Opportunities

Endurance Gold – An Opportunity Generator with Pre-Existing Projects Divested for Cash, Shares, &/or Royalty such as:

- **Rattlesnake Hills Au, WY – SOLD** to GFG Resources (TSX-V;GFG)
- **Pardo Paleoplacer Au, Ontario – SOLD** to Inventus Mining (TSX-V;IVS)

Current **100% controlled** Drill-Stage Projects in excellent jurisdictions are;

- **Elephant Mtn Gold Project**, Central Alaska – Tombstone Gold Belt - Intrusive Hosted Gold - 0.40 gpt Au over 147 m – 6 Large Targets - needs +\$2 Million drilling **FOR SALE or JOINT VENTURE**
- **Bandito Rare-Earth Niobium**, Yukon – Syenite Intrusive hosted - **HOLD**
- **Reliance Gold Project**, Gold Bridge BC – “Epizonal” Orogenic
The Exploration and Funding Focus for the Company
SELF FUNDED

Endurance Gold Corporation – Core Gold Assets

HIGHLIGHTS AND PLANS

100% controlled - Drill-ready Gold Projects - top-ranked jurisdictions.

Reliance Gold Project, B.C. – Epizonal Orogenic – 2023 Drilling

- Next to a former +4 m ounce producer
- Six phases of drilling – up to **15.7 gpt Gold over 28.4 m**
- **1.5 km +100 ppb** gold-in-soil - strong system strike potential
- 84 RC Holes completed with excellent results
- 82 DD Holes with excellent assay results

Elephant Mtn Project, Alaska – Intrusive Hosted Gold

- Within the Yukon-Alaska Tombstone Gold Belt
- Six drill targets (kilometre scale) within an emerging 12 x 5 km district.
- Drill intersections such as **0.40 gpt Gold over 147 m** and **4.1 gpt Gold over 4.6 m**
- Permitted - Further drilling warranted

**AVAILABLE FOR JOINT VENTURE
OR STRATEGIC ALTERNATIVE**

Reliance Gold Project

Bralorne Camp, Gold Bridge, B.C.

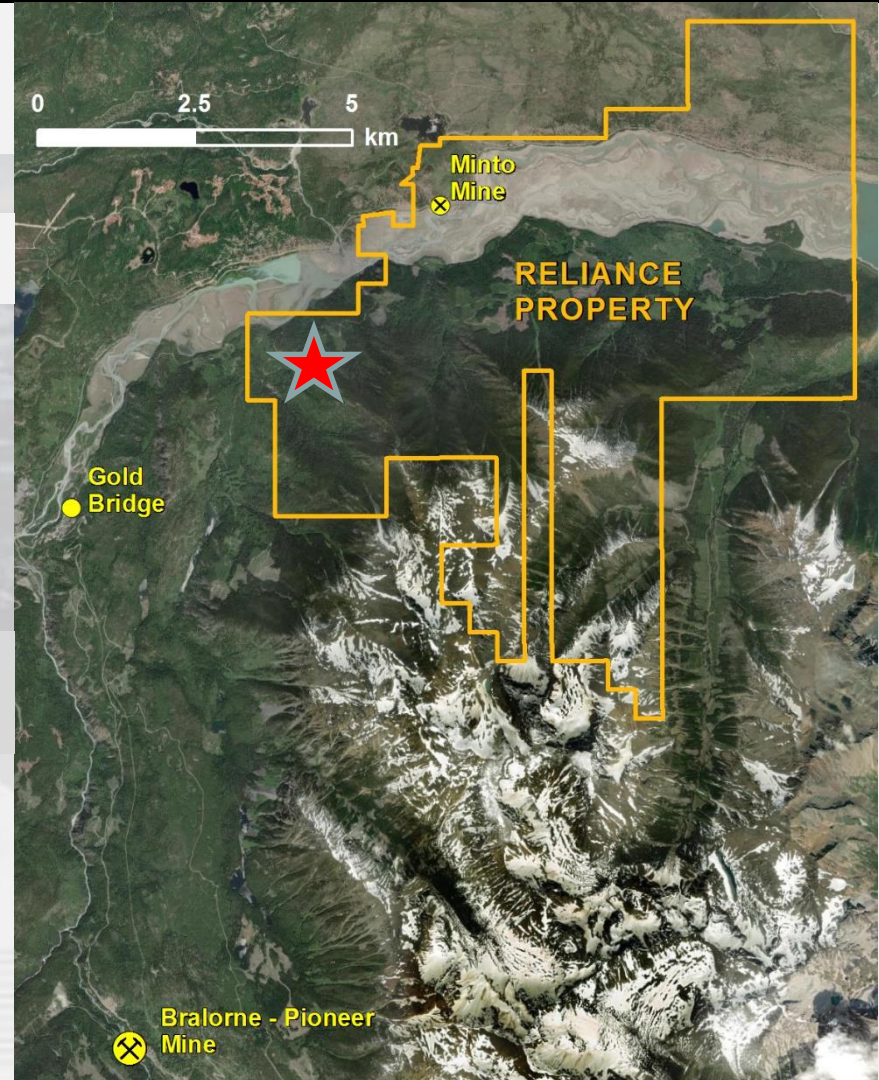
New Surface Discovery

10 km from historic Bralorne Camp
(+4 million ounces of historic production)



4 hour Drive
from Vancouver


Imperial and
Eagle Zones



Reliance Gold Project, Gold Bridge, BC Program Activity Highlights 2020 to 2023

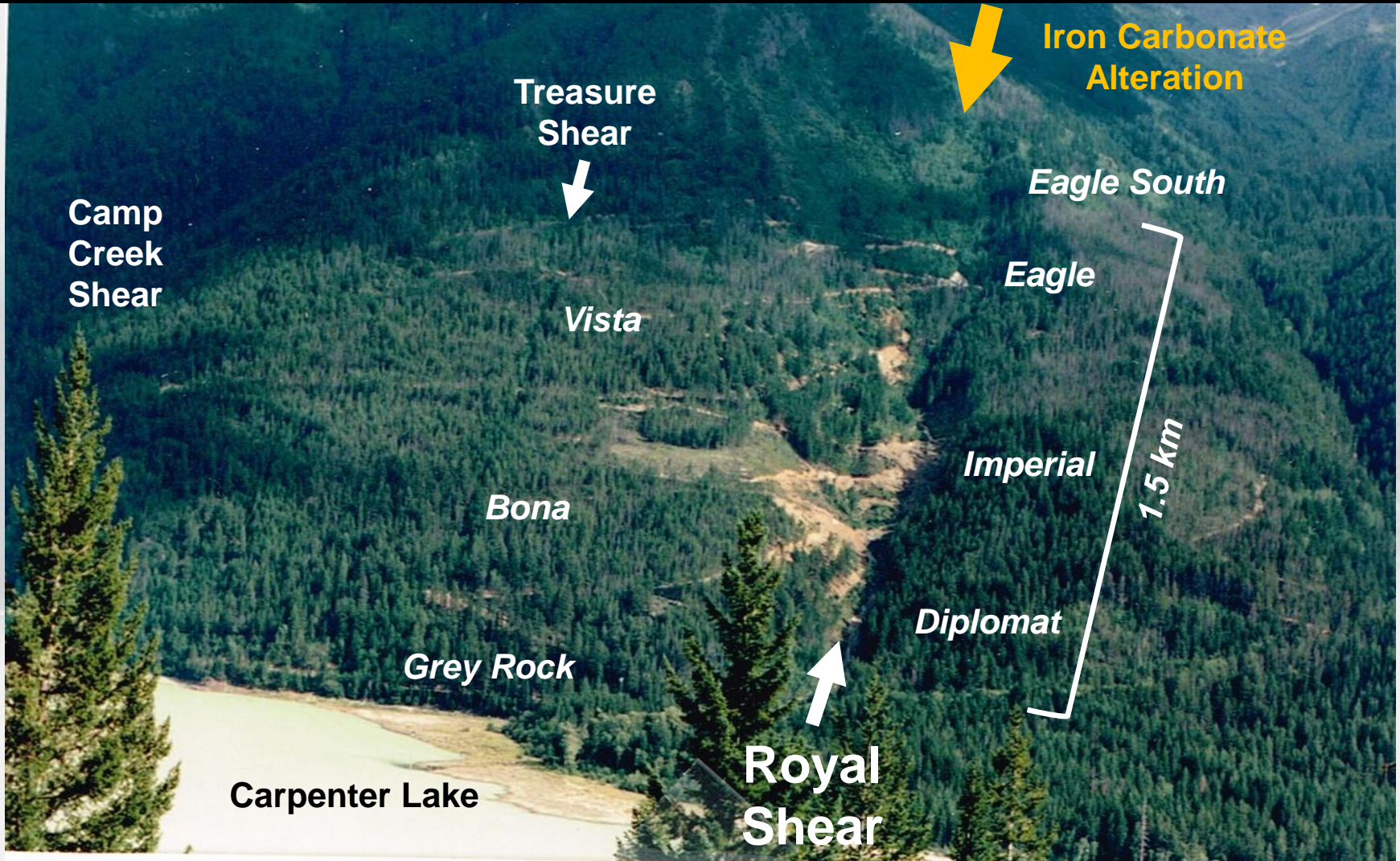
“Discovery Stage” Gold Project in a productive gold camp.

- Early Exploration between 1985 and 2008 - limited focus over about 100 m - Never systematically explored
- Progress since 2020 – Systematically Expanded potential to 2 km.
- 2020 to 2022 – Surface channel sampling - **Excellent Surface Results**
- 2020, 2021 & 2022 - Reverse Circulation (‘RC’) drilling - **84 RC holes**
- 2021 to 2024 - **88 Diamond Drill Holes** at Eagle & Imperial Zones
- **Excellent drilling Results statistics**
- Highlights - Eagle Expanded to 550 m strike – Deep +30 m wide Imperial Zone
- **2024 Drilling – to grow on Strike and at Depth**

Reliance Gold Project, B.C. Best Diamond Drill Holes 2021 to 2023

<u>Zone & DDH</u>	<u>From</u>	<u>g/t X m</u>	<u>Au g/t / Metre</u>
Eagle - 22-058	32.1	426	3.05 gpt / 139.9m
Eagle - 21-020	33.3	389	15.70 gpt / 24.8m
Imperial - 21-009	161.0	210	8.47 gpt / 24.9m
Eagle - 21-006	25.6	210	8.62 gpt / 24.4m
Eagle - 23-076	9.3	133	5.80 gpt / 23.0m
Eagle - 22-027	109.2	124	4.16 gpt / 30.0m
Eagle - 22-026	80.4	108	8.06 gpt / 13.5m
Eagle - 22-024	27.0	100	8.41 gpt / 12.0m
Eagle - 22-036	35.4	97	7.65 gpt / 12.7m
Eagle - 22-031	124.9	90	7.58 gpt / 11.9m
Eagle - 22-045	35.1	84	7.31 gpt / 11.6m
Eagle - 21-004	1.0	84	4.44 gpt / 19.0m
Imperial - 23-065	212.8	83	8.98 gpt / 9.3m
Eagle - 22-028	97.0	82	2.59 gpt / 31.6m
Imperial - 23-066	306.5	72	17.28 gpt / 4.2m

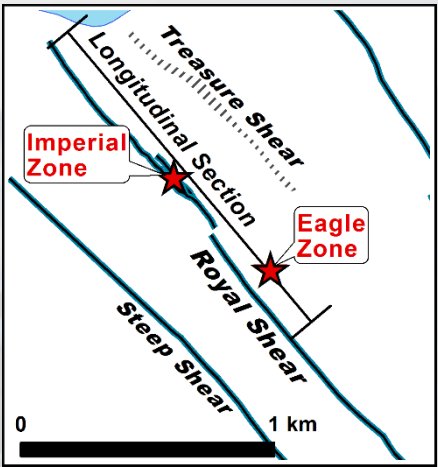
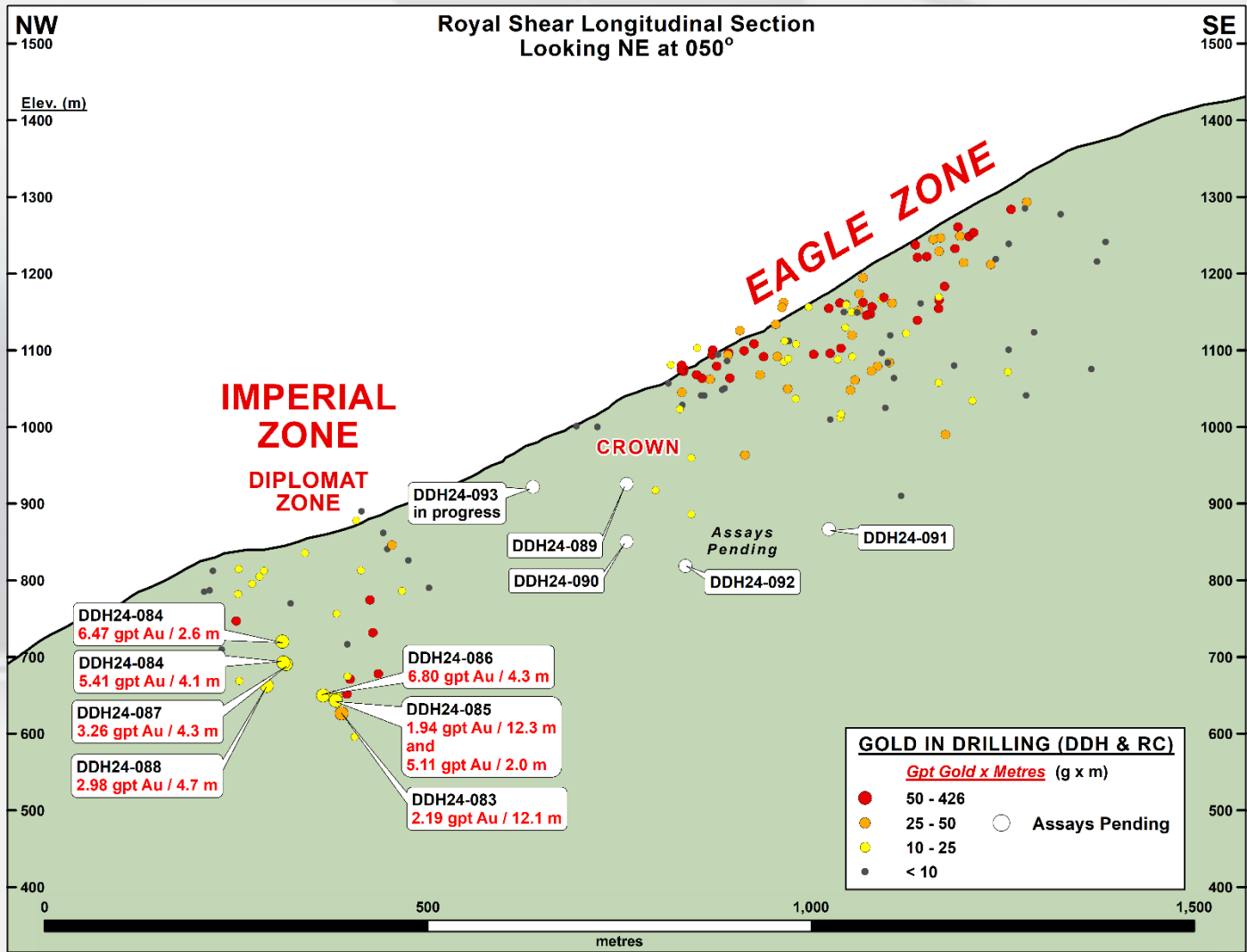
Reliance Gold Project Bralorne Camp, Gold Bridge B.C.



Reliance Gold Project 2024 Drill Hole Locations



Reliance Gold Project Entire Longitudinal Section – 2024 Update



Reliance Gold Project Royal Shear Geology & Cross Sections



REPORTED GOLD INTERCEPTS

5.00 gpt Gold / 9.8 m

2023 Diamond Drill Intercept

DRILLING BY ENDURANCE GOLD

- Diamond Drill Hole
 - Reverse Circulation (RC) Drill Hole
- Select drill traces shown Au = Gold

MINERALIZATION

- Surface Exposed Mineralization
- Mineralization Trend Projected from depth

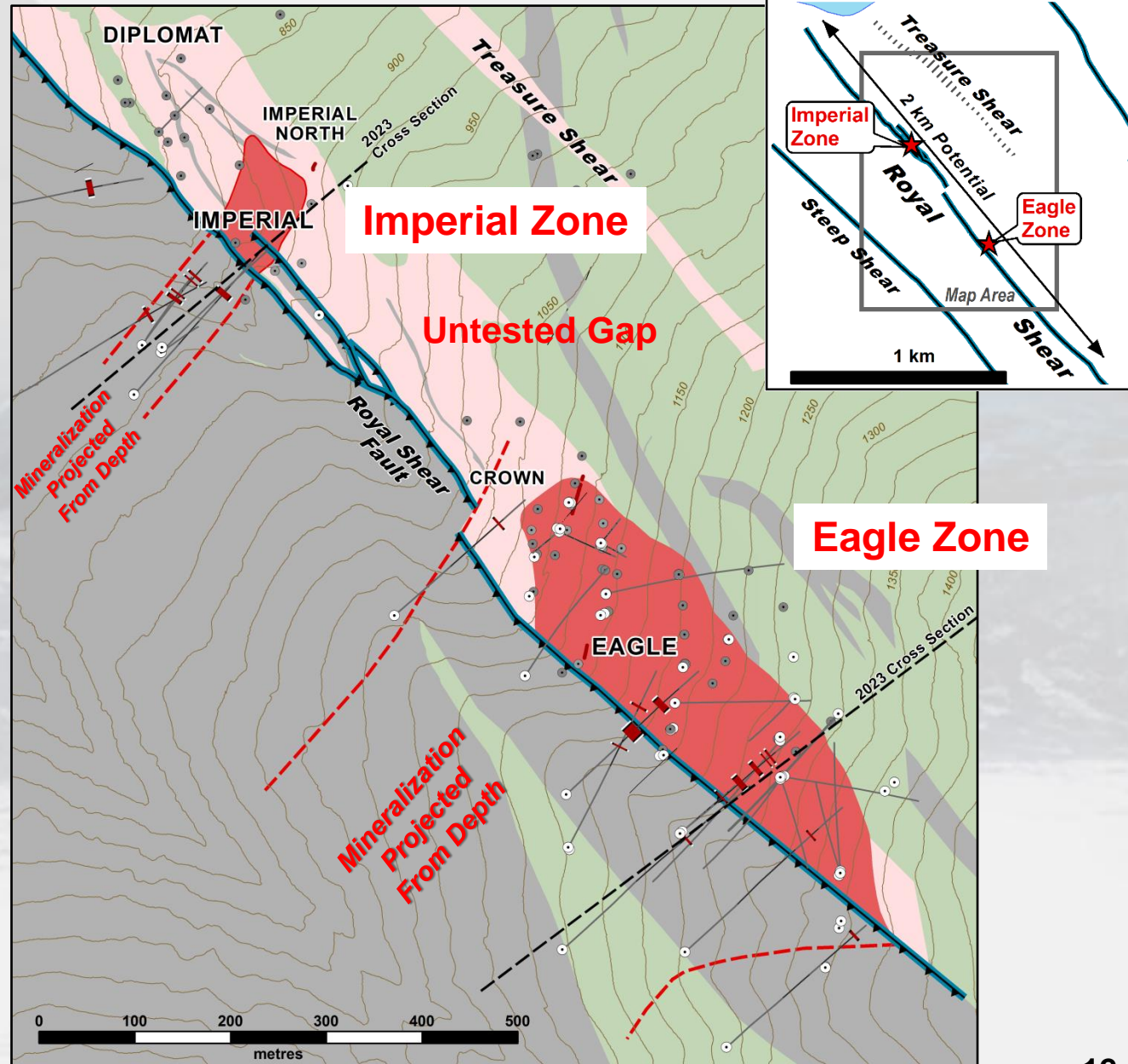
GEOLOGY

ALTERATION

- Ankerite Alteration +/- Quartz

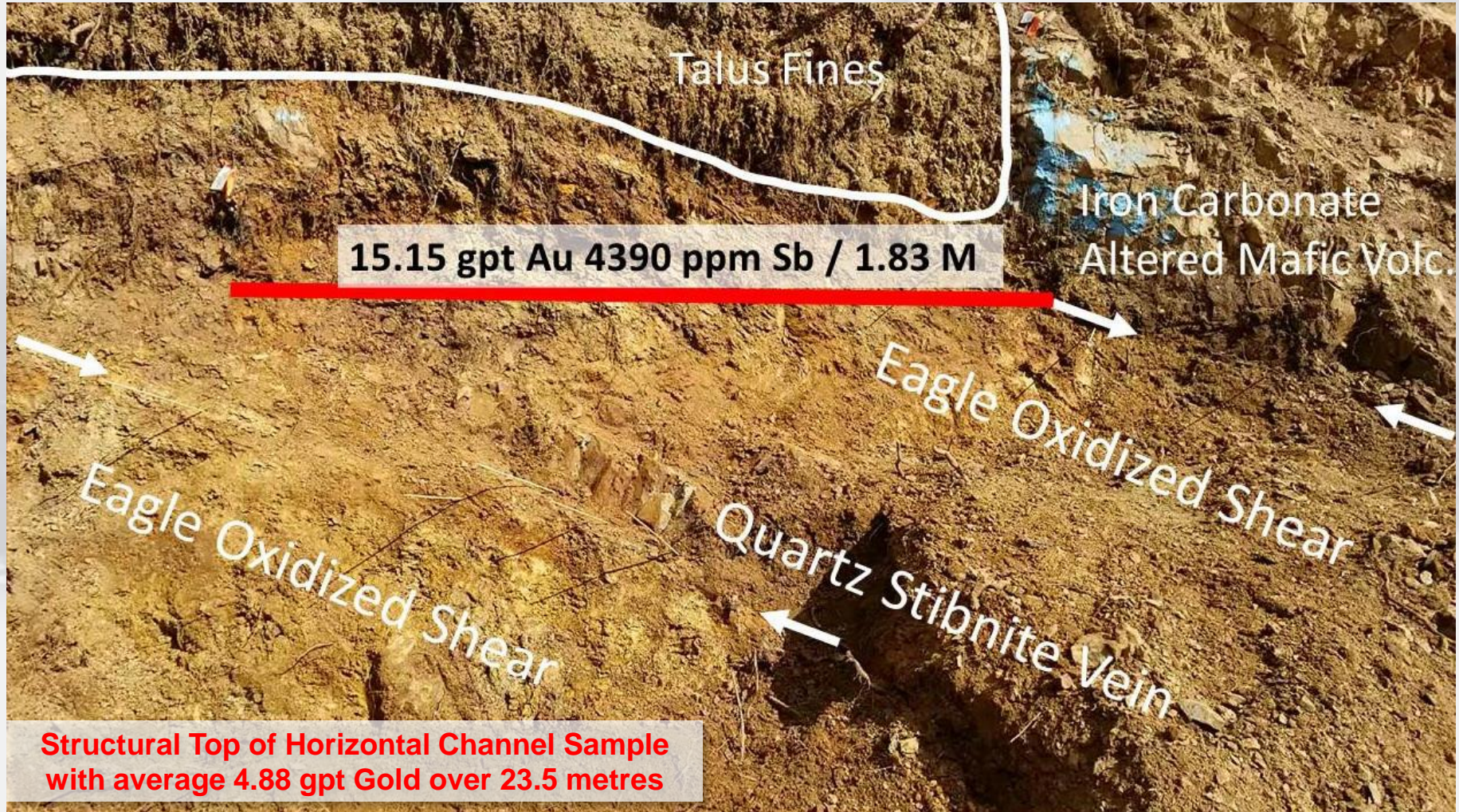
ROCK TYPE

- Mafic Volcanic / Gabbro
- Argillite and Chert



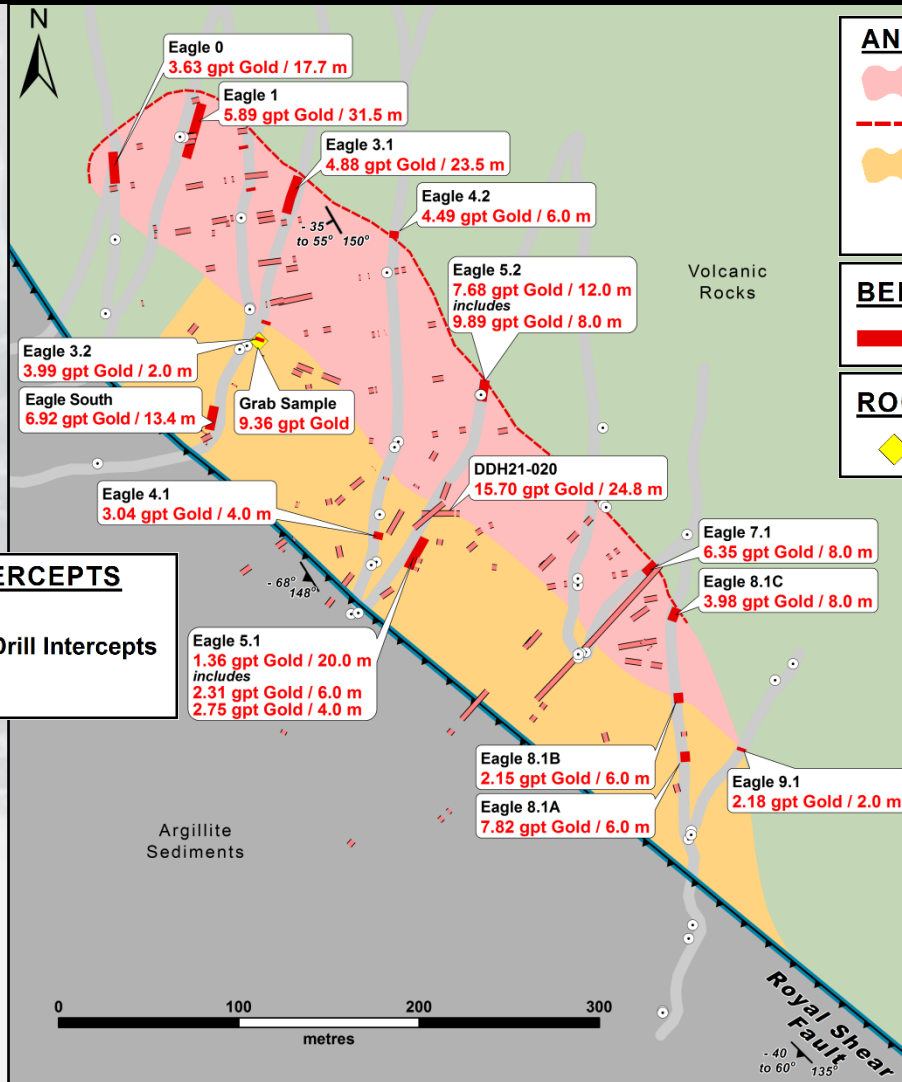
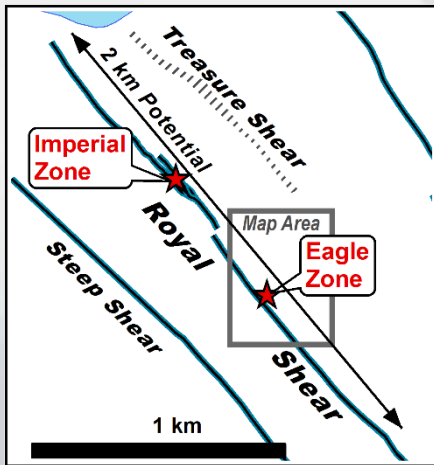
Reliance Gold Project

Eagle Zone at Eagle 3 Road – West Dipping Shear Zone



Reliance Gold Project

Bedrock Channel Samples Eagle Zone




ANOMALIES & MINERALIZATION

-  Eagle Zone
-  Eagle Zone Surface Exposure
-  Eagle South Feeder Zone
*Intense brittle-ductile deformation
Strong pervasive ankerite-sericite alteration
Multiple brecciated quartz veins*

BEDROCK CHANNEL SAMPLING

-  Channel Sample Gold Intercept

ROCK GRAB SAMPLING

-  2022 Rock Grab Sample

DRILLING REPORTED GOLD INTERCEPTS
Projected Vertically to Surface

-  2020-2022 Reported DDH & RC Drill Intercepts
-  Diamond Drill Hole Location

Eagle Channel Samples indicate 550 m of strike trend

Reliance Gold Project, BC – 2020, 2021 & 2022 RC Drilling

- Completed **84 RC Drill Holes** in 2020, 2021 and spring 2022.
- Excellent results statistics in RC - **40 of 84 RC holes returned > 10 gram*m**
- Most of the Best RC holes in the **EAGLE Area** - with some excellent results:
 - **14.08 gpt Gold over 15.24 m**
 - **8.57 gpt Gold over 10.66 m**
- **IMPERIAL Zone** – Up plunge Intersection - **7.23 gpt Gold over 4.6 m**
- **DIPLOMAT Zone** - **16.49 gpt Gold over 4.57 m**

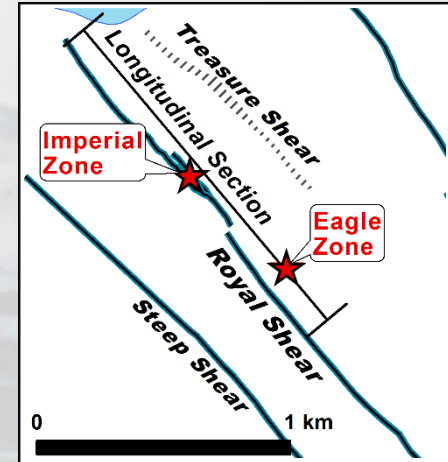
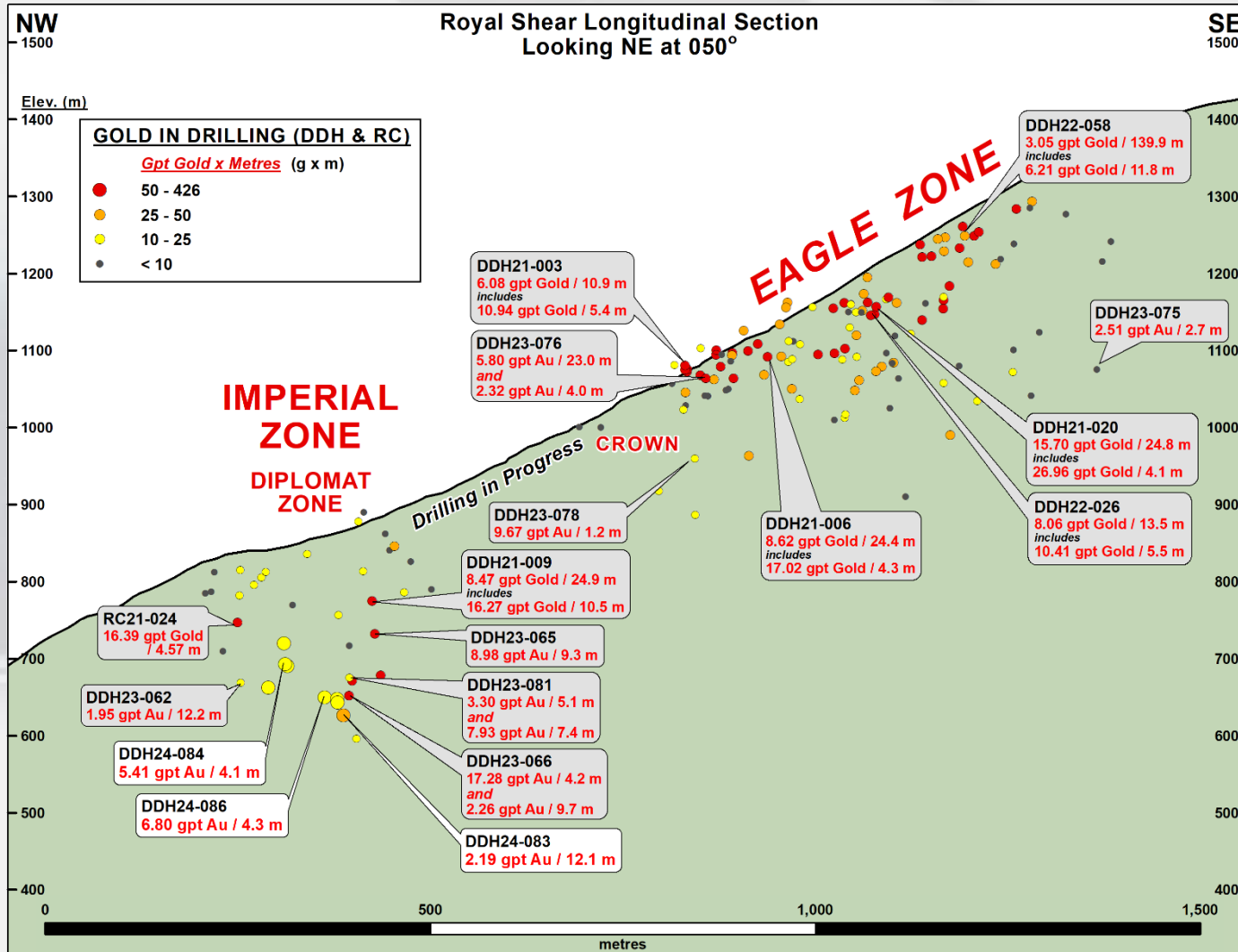
Reliance Gold Project, BC – 2021 to 2024 DDH Statistics

1. Completed **88 Diamond** Drill Holes between 2021 to 2024
2. Majority of Drill holes at the **Eagle Area – SIGNIFICANT DISCOVERY**
 - 15.7 gpt Gold over 24.8 m including 26.96 gpt Gold over 4.1 m
 - 8.62 gpt Gold over 24.4 m including 17.02 gpt Gold over 4.3 m
 - 8.41 gpt Gold over 12.0 m, 8.05 gpt Gold over 13.0 m.
 - 3.05 gpt Gold / 139.9 m, 4.16 gpt Gold / 30.0 m, 5.8 gpt Gold / 23 m
3. 17 Diamond Drill holes at the **Imperial Zone** – majority mineralized
 - 8.47 gpt Gold over 24.9 m including 16.27 gpt Gold over 10.5 m
 - 8.98 gpt Gold over 9.3 m including 12.44 gpt Gold over 6.0 m
 - 17.28 gpt Gold over 4.2 m including 35.20 gpt Gold over 1.3 m
4. **59 of 88 DDH** have significant intersections with a total of 94 significant intersections exceeding 10 gram X metre (in minimum 3 m mineralized width)
5. **15 of 82 DDH** have excellent drill intersections (72 to 426 gram X metre)

Reliance Gold Project, B.C. Best Diamond Drill Holes 2021 to 2023

<u>Zone & DDH</u>	<u>From</u>	<u>g/t X m</u>	<u>Au g/t / Metre</u>
Eagle - 22-058	32.1	426	3.05 gpt / 139.9m
Eagle - 21-020	33.3	389	15.70 gpt / 24.8m
Imperial - 21-009	161.0	210	8.47 gpt / 24.9m
Eagle - 21-006	25.6	210	8.62 gpt / 24.4m
Eagle - 23-076	9.3	133	5.80 gpt / 23.0m
Eagle - 22-027	109.2	124	4.16 gpt / 30.0m
Eagle - 22-026	80.4	108	8.06 gpt / 13.5m
Eagle - 22-024	27.0	100	8.41 gpt / 12.0m
Eagle - 22-036	35.4	97	7.65 gpt / 12.7m
Eagle - 22-031	124.9	90	7.58 gpt / 11.9m
Eagle - 22-045	35.1	84	7.31 gpt / 11.6m
Eagle - 21-004	1.0	84	4.44 gpt / 19.0m
Imperial - 23-065	212.8	83	8.98 gpt / 9.3m
Eagle - 22-028	97.0	82	2.59 gpt / 31.6m
Imperial - 23-066	306.5	72	17.28 gpt / 4.2m

Reliance Gold Project Entire Longitudinal Section – Open to Expansion



Reliance Gold Project Royal Shear Geology & Cross Sections



REPORTED GOLD INTERCEPTS

5.00 gpt Gold / 9.8 m

2023 Diamond Drill Intercept

DRILLING BY ENDURANCE GOLD

- Diamond Drill Hole
 - Reverse Circulation (RC) Drill Hole
- Select drill traces shown Au = Gold

MINERALIZATION

- Surface Exposed Mineralization
- Mineralization Trend Projected from depth

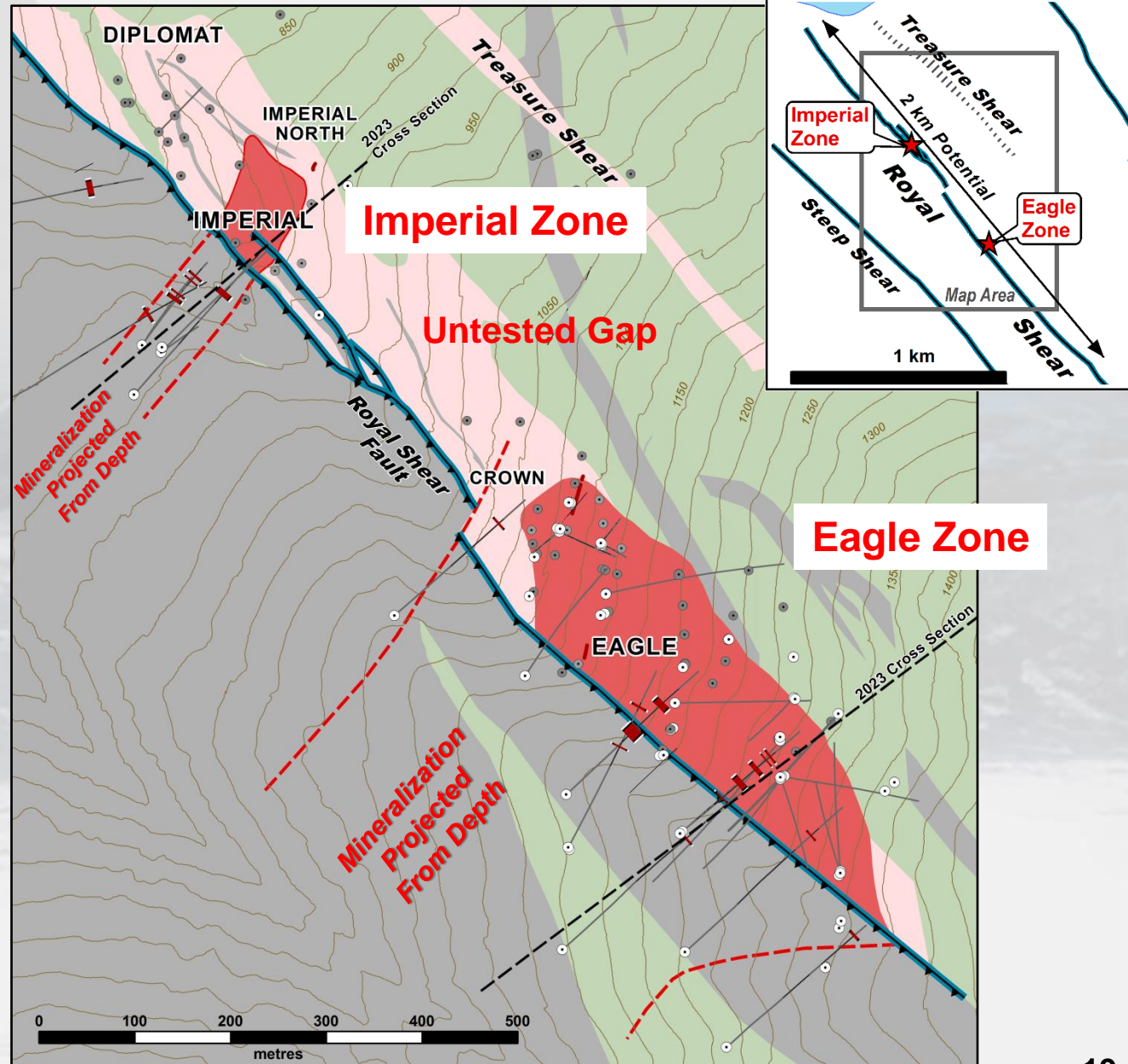
GEOLOGY

ALTERATION

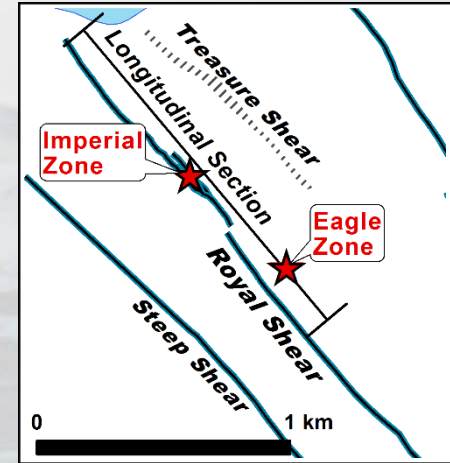
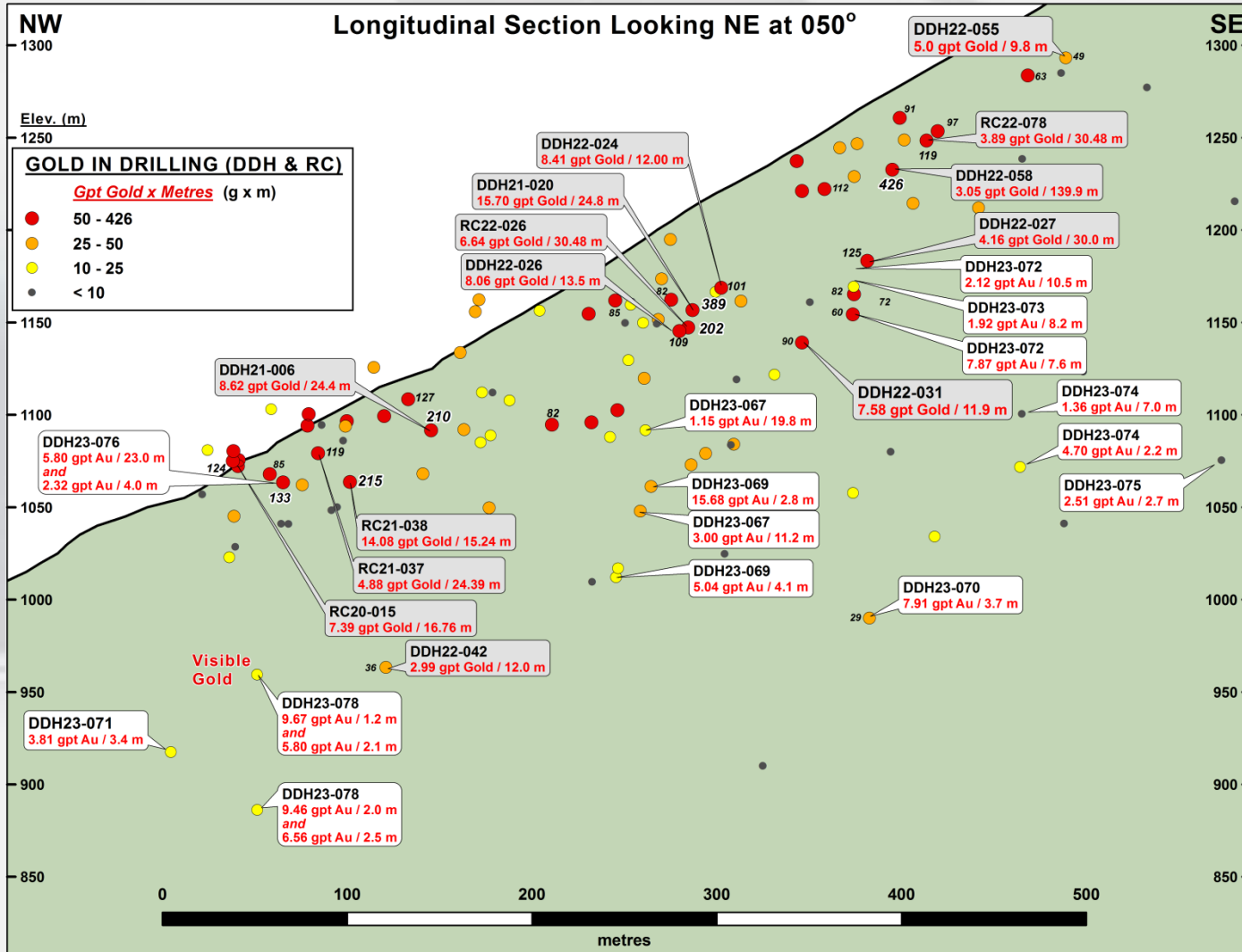
- Ankerite Alteration +/- Quartz

ROCK TYPE

- Mafic Volcanic / Gabbro
- Argillite and Chert

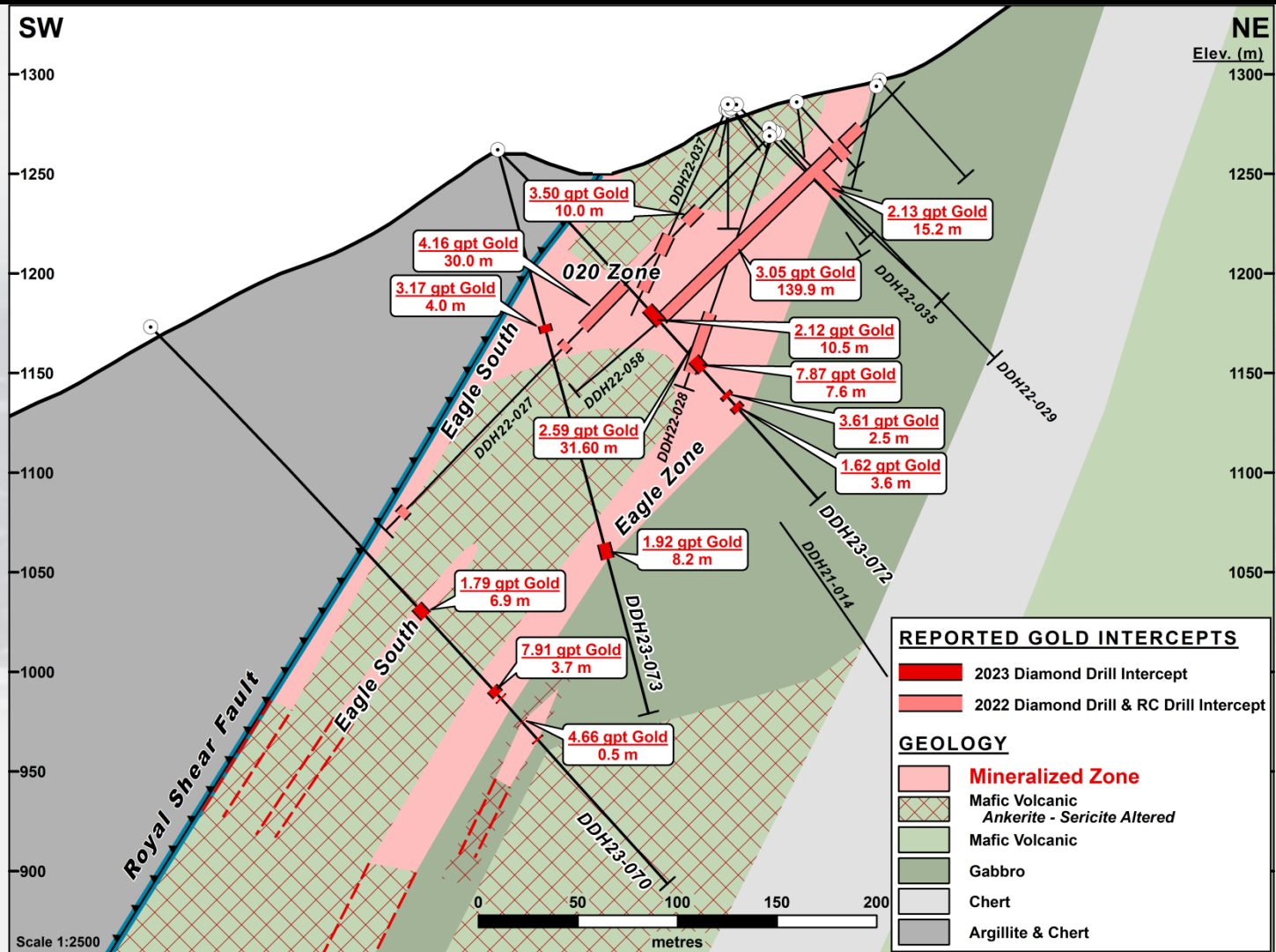


Reliance Gold Project Eagle Zone Longitudinal Section – 550 m Trend



Reliance Gold Project

Eagle Cross Section DDH23-070, -072, -073



Reliance Gold Project

Eagle to Imperial Structural Model

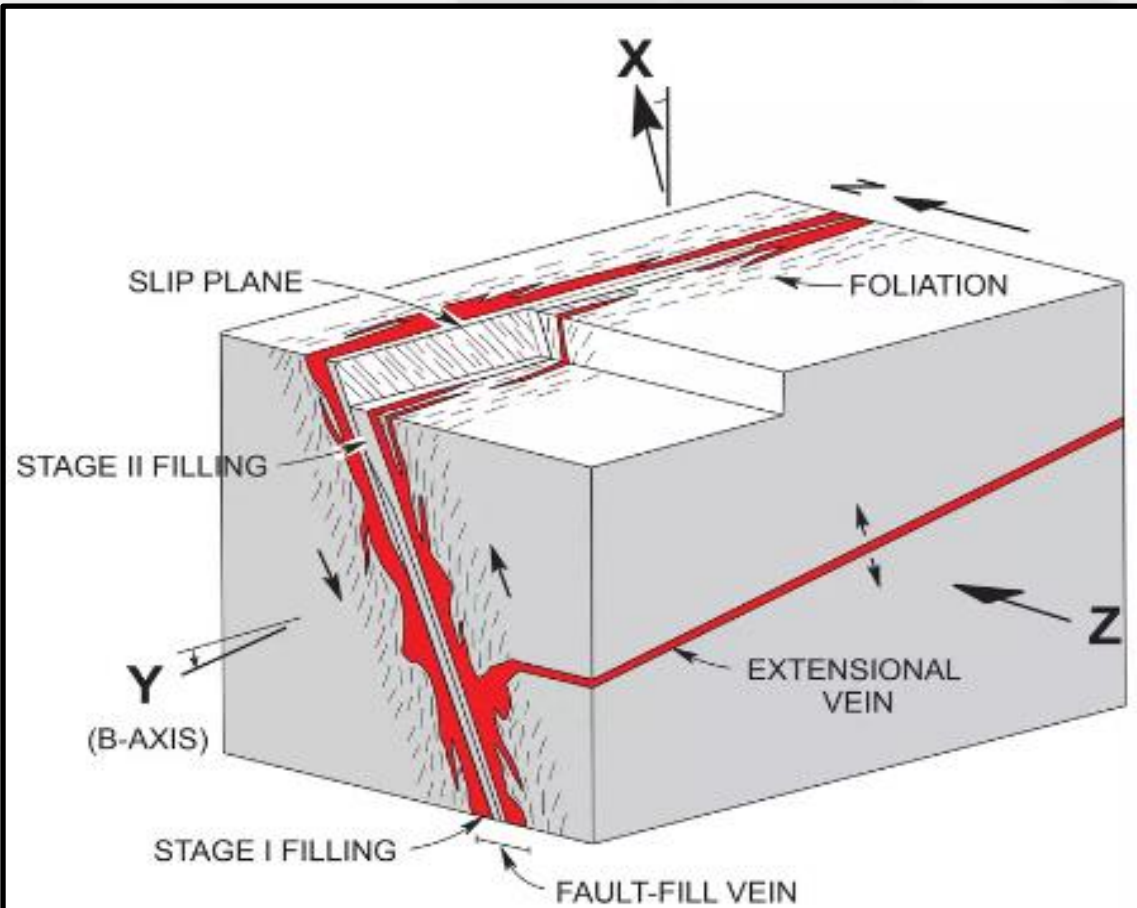
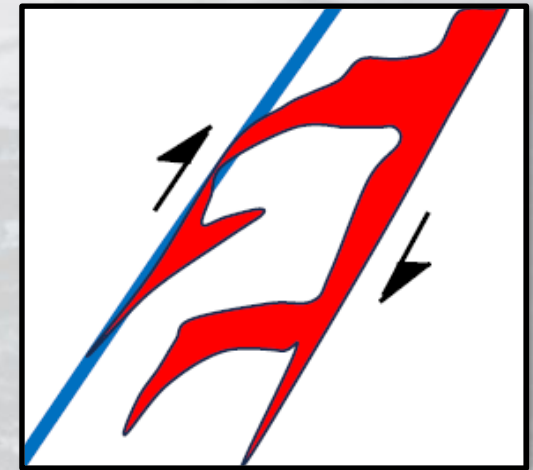


FIGURE 8. Schematic diagram illustrating the geometric relationships between the structural element of veins and shear zones and the deposit-scale strain axes (from Robert, 1990).



*Reliance Interpretation
at Eagle Zone
(Rhys 2024)*

Reliance Gold Project

Eagle Mineralized Breccia Textures

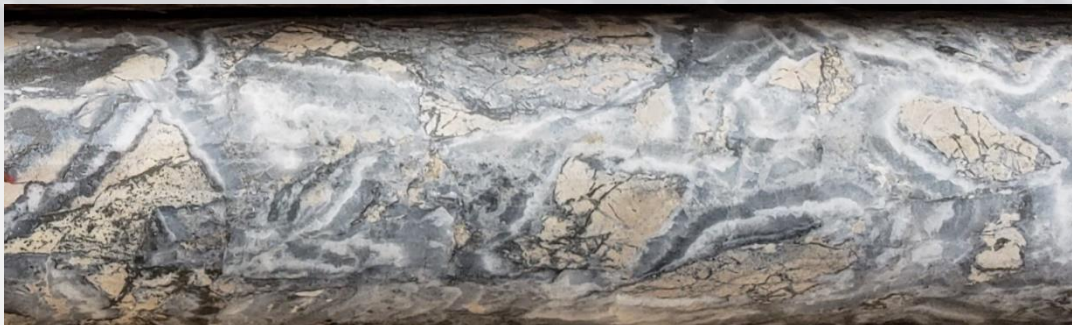
Gold - Arsenopyrite Quartz Breccia (Cataclastite) 6.19 gpt Gold over 0.85 m



**DDH22-027
@ 116.4m**

**on 027 Vein
Margin**

Gold - Aspy "Coxcomb" Quartz Breccia 14.35 gpt Au /2.0 m



**DDH22-031
@ 128 m**

Reliance Gold Project

Visible Gold in 2023 Drilling: DDH23-078

**DDH23-078 Visible gold in “Coxcomb” Quartz Vein BX
9.67 gpt Gold / 1.2 m**



Reliance Gold Project Royal Shear Geology & Cross Sections



REPORTED GOLD INTERCEPTS

5.00 gpt Gold / 9.8 m

2023 Diamond Drill Intercept

DRILLING BY ENDURANCE GOLD

- Diamond Drill Hole
 - Reverse Circulation (RC) Drill Hole
- Select drill traces shown Au = Gold

MINERALIZATION

- Surface Exposed Mineralization
- Mineralization Trend Projected from depth

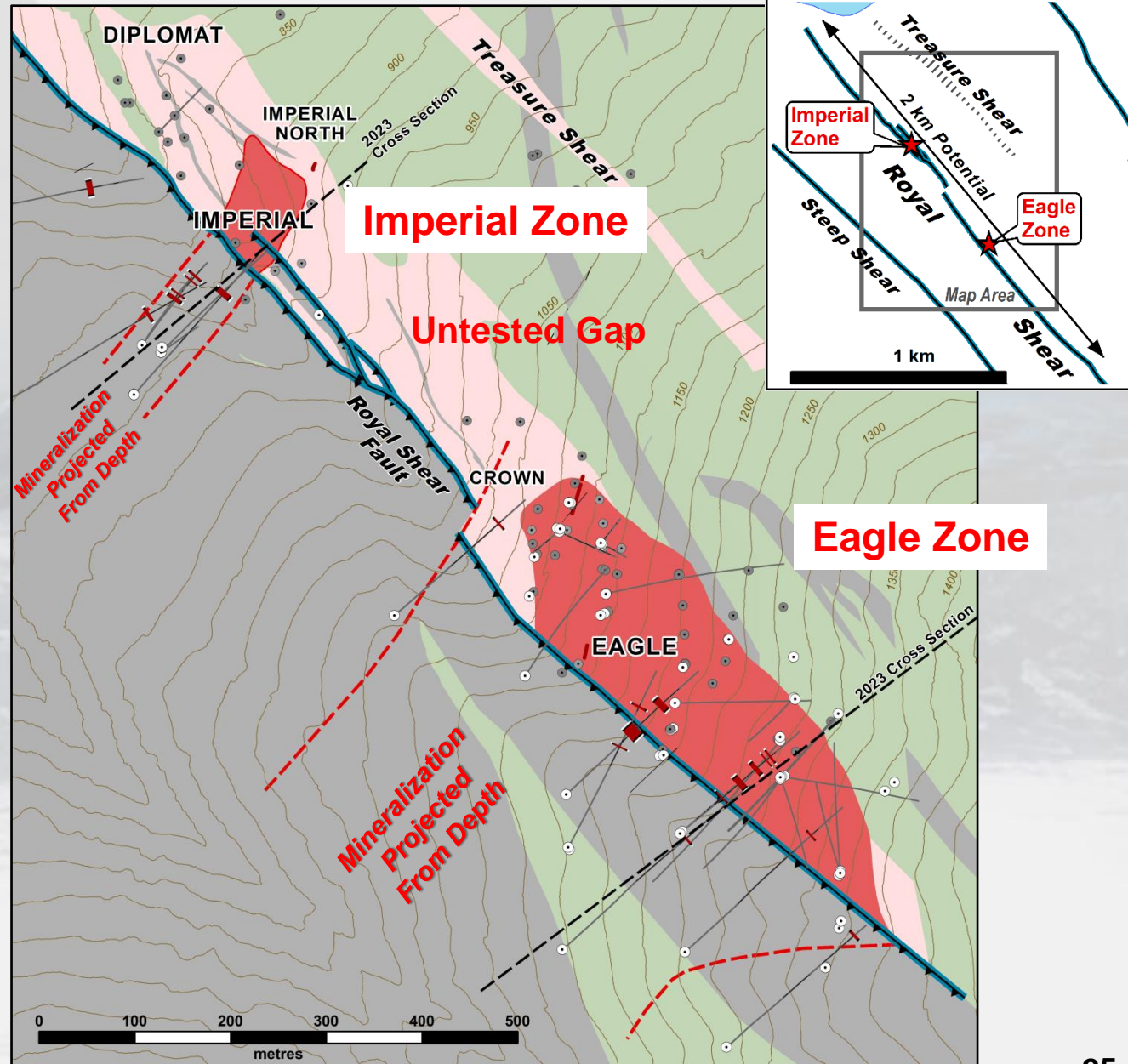
GEOLOGY

ALTERATION

- Ankerite Alteration +/- Quartz

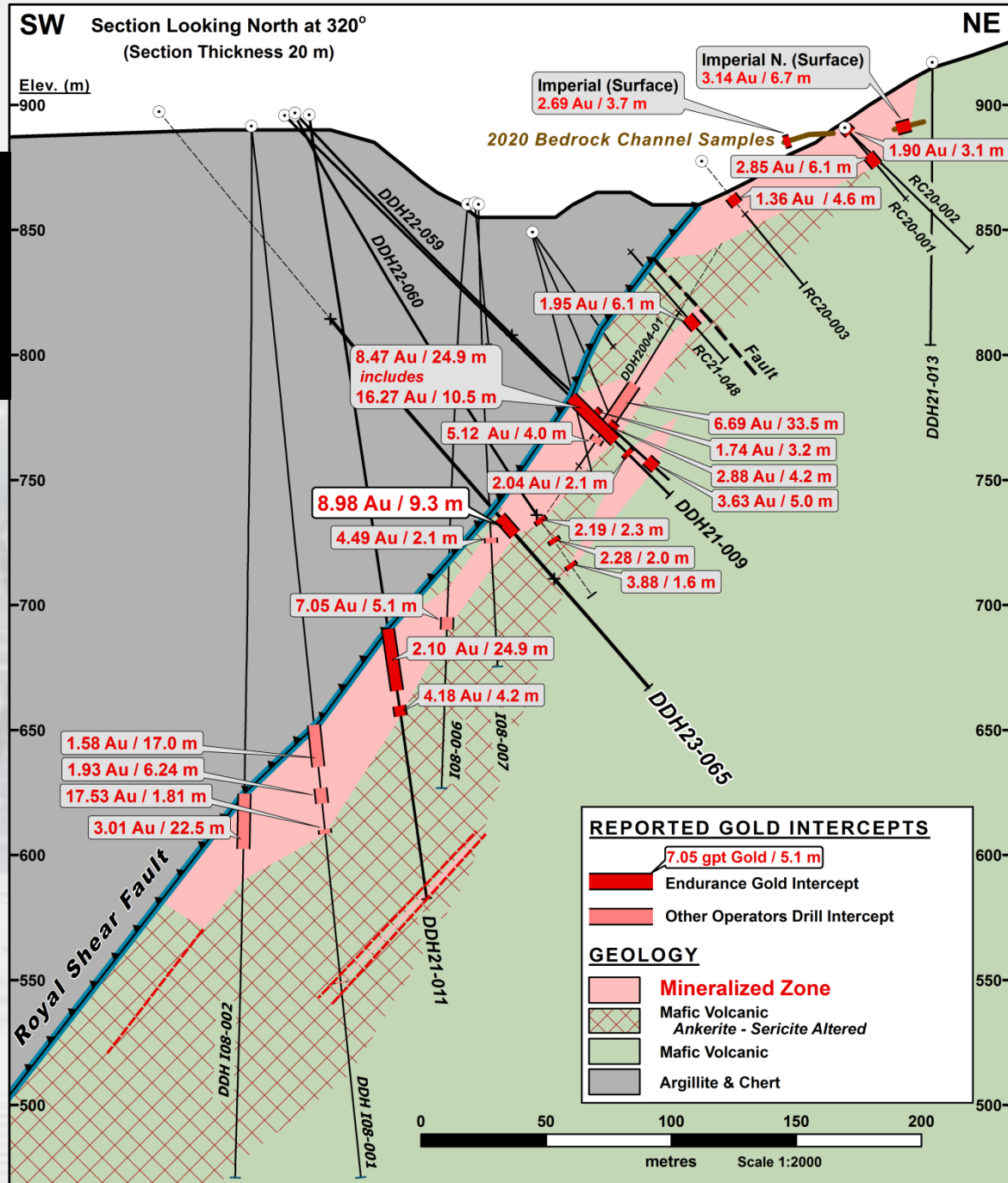
ROCK TYPE

- Mafic Volcanic / Gabbro
- Argillite and Chert

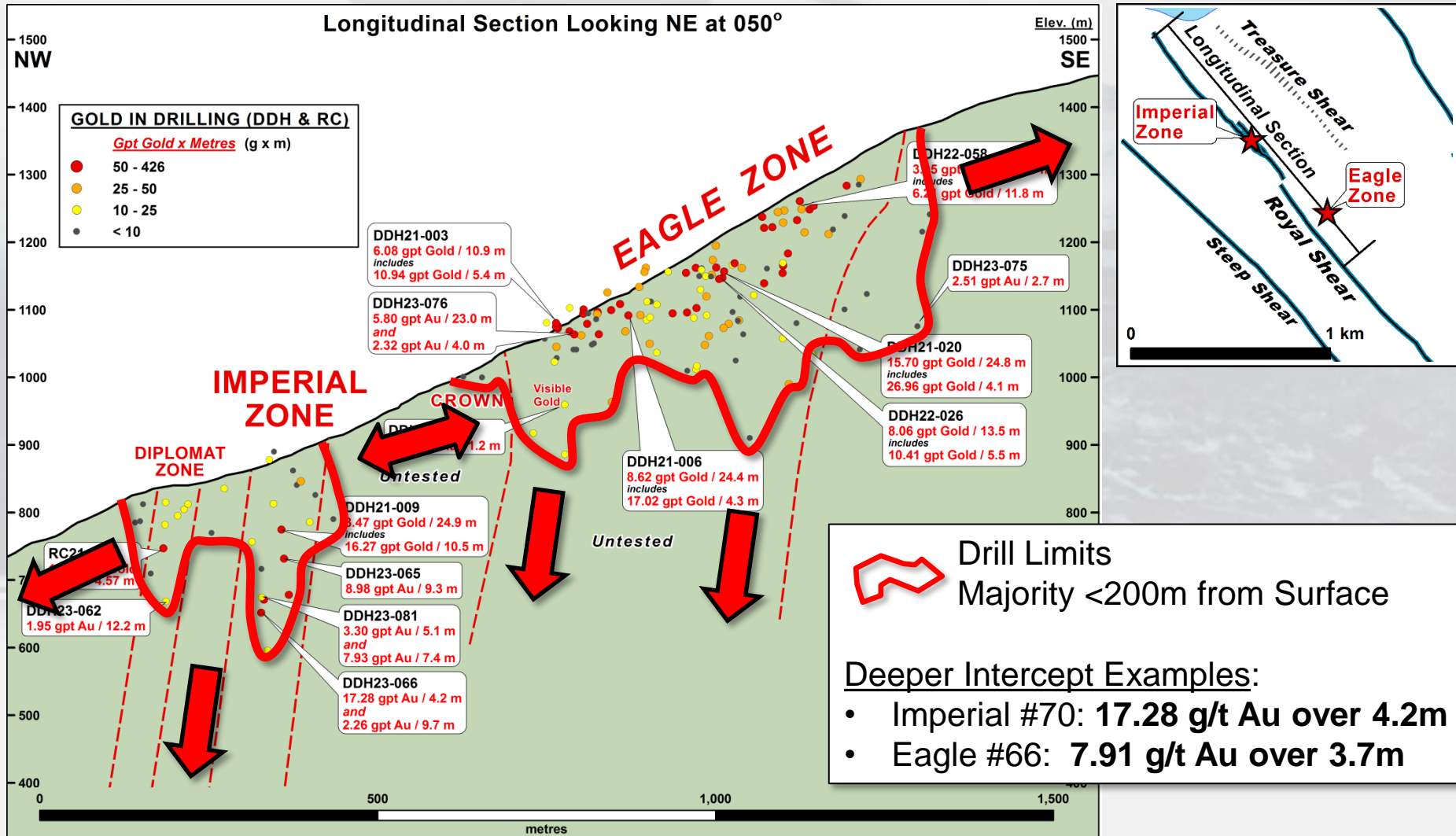


Reliance Gold Project Imperial Zone 2023 Drill Cross-Section DDH23-065

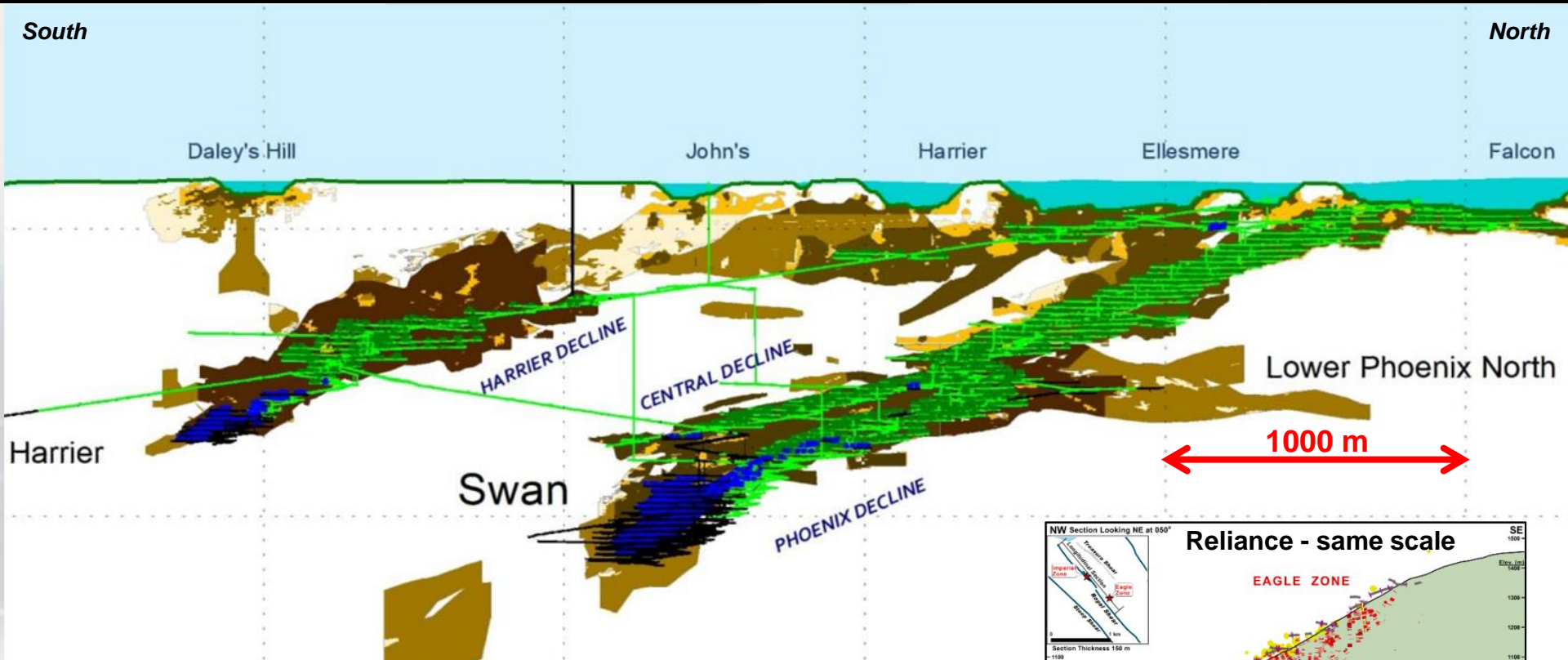
Imperial Area open
at Depth and
along strike



Reliance Gold Project Royal Shear Longitudinal Section

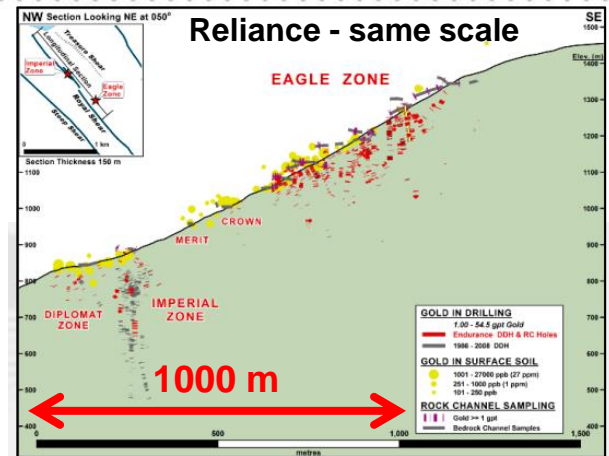


Reliance Gold Project Fosterville Analogy?

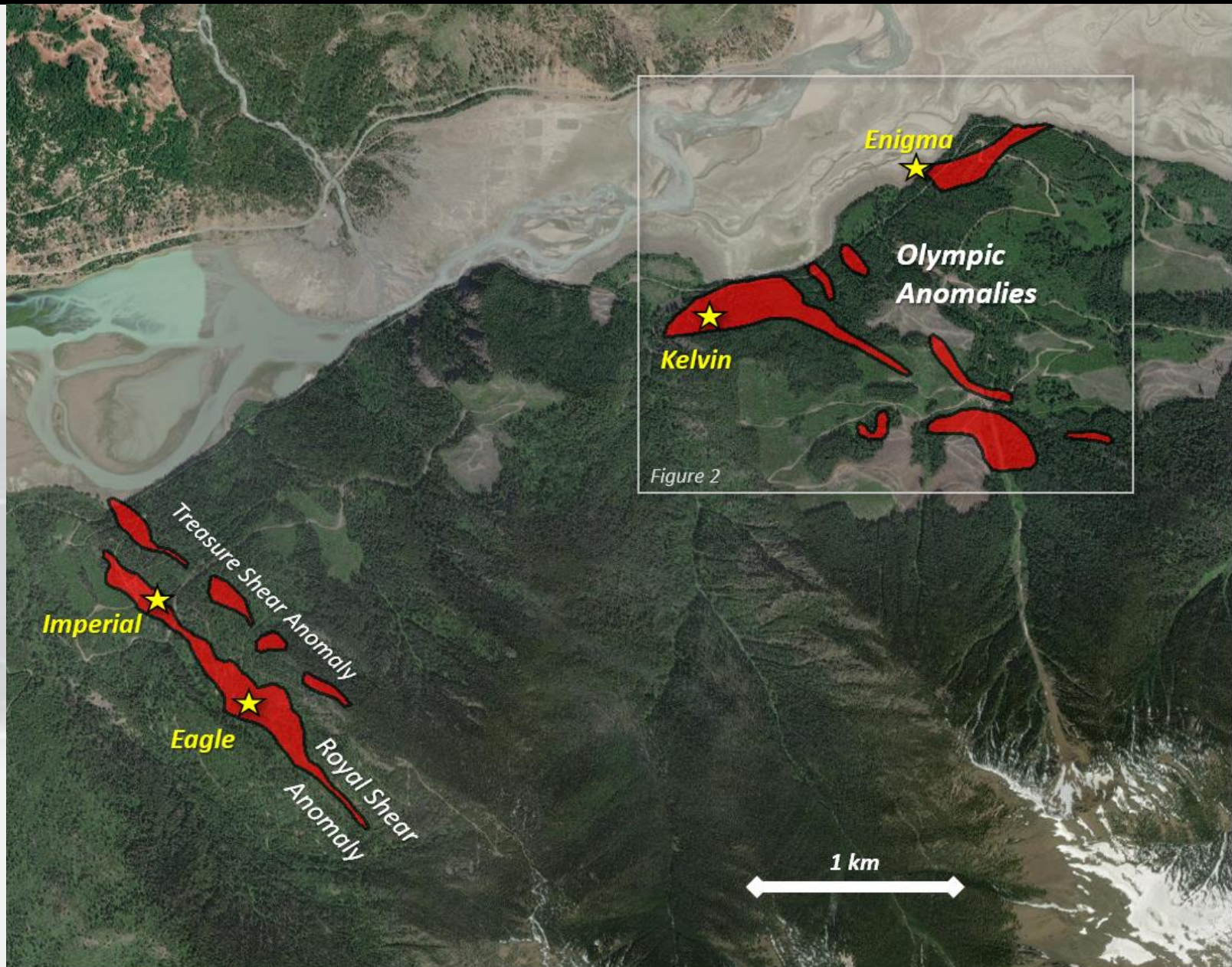


Fosterville gold mine was originally a low-grade heap leach open cut oxide operation with improving gold grades to depth (e.g. Swan zone – 2.34 moz @ 49.6 gpt Au) – resources currently defined to +1,300 m depth

Average vertical drill depth at Reliance is less than 70 m



Reliance Gold Project, B.C. Eagle, Imperial & the Olympic Geochemical Anomalies



Reliance Gold Project, BC Conclusions

- An outstanding New Exploration Discovery in an historically productive multi-million ounce Orogenic Gold Camp.
- Wide pervasive iron-carbonate sericite alteration, sulphidization, breccia, and antimony indicate an “Epizonal” Orogenic setting in a “brittle” structural regime – Epizonal comparables to Fosterville, Australia and recent Newfoundland discoveries.
- Model provides potential for a major gold system with depth continuity.
- RC & DDH Drilling has delivered a high percentage of significant and excellent intersections.
- New discovery at the **Eagle Zone** is now **550 m X 150 m** defined by over 70 RC and DDH – **Average 5.17 gpt Gold over average intersection width of 9.6 m**
Open at depth and along strike.
- Wider 30 m wide shallow plunging mineralized trend confirmed at Imperial.
- New parallel mineralized trends developing as high priority drill targets

Reliance Gold Project, BC Planned 2024 Program

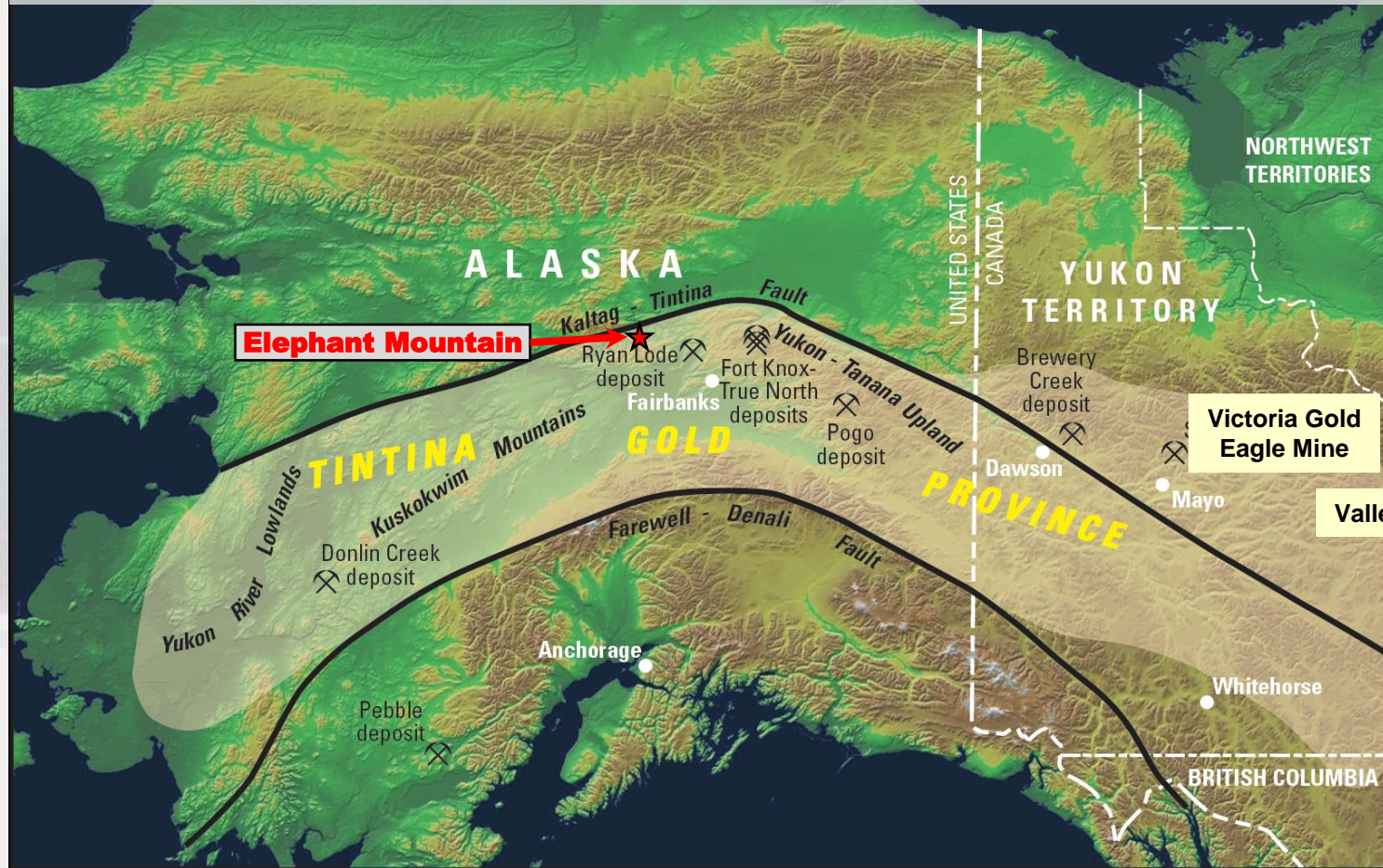
- Up to 10,000 m of diamond drilling on the fully-permitted Royal Shear trend
- Geological, structural, mineralogical and metallurgical studies at Eagle and Imperial
- Revise 3D geological model in anticipation of an inaugural mineral resource estimate at Eagle and Imperial
- Geochemical surface sampling to open up trends and parallel structures
 - Develop drill-ready targets at Upper Eagle, Enigma, Olympic soil grids
- Community consultation:
 - Drill permit application in the Olympic Area
- Continue environmental baseline studies

ALASKA GOLD PROJECT



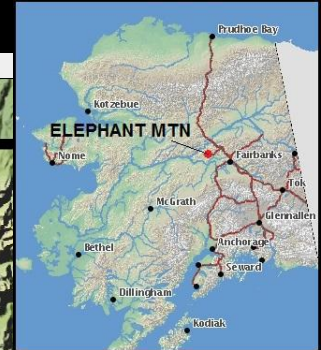
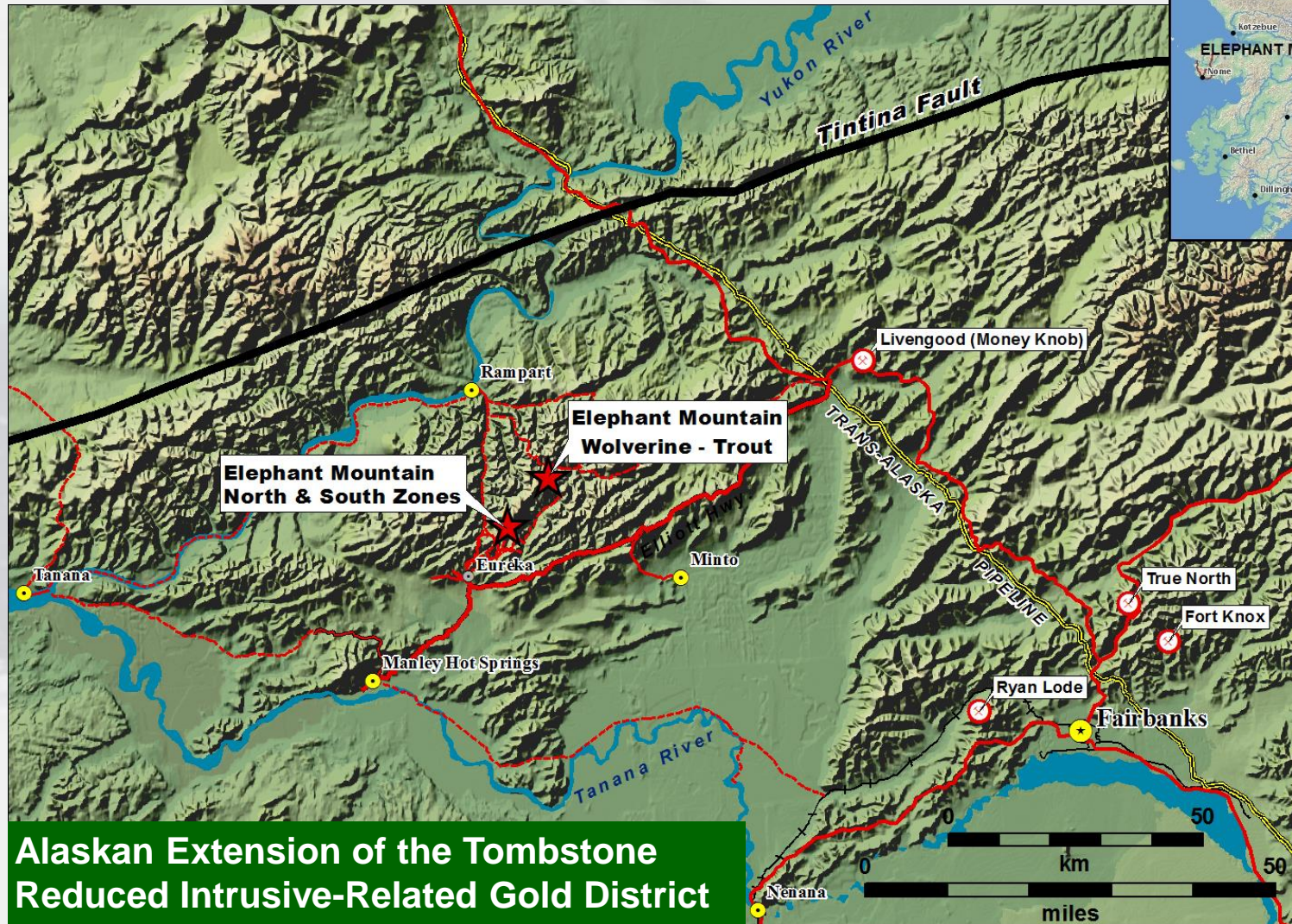
Tombstone (Tintina) Gold Province - Alaska & Yukon

Alaska ranks in the Top 5 in Fraser Institute's Investment Attractive Index

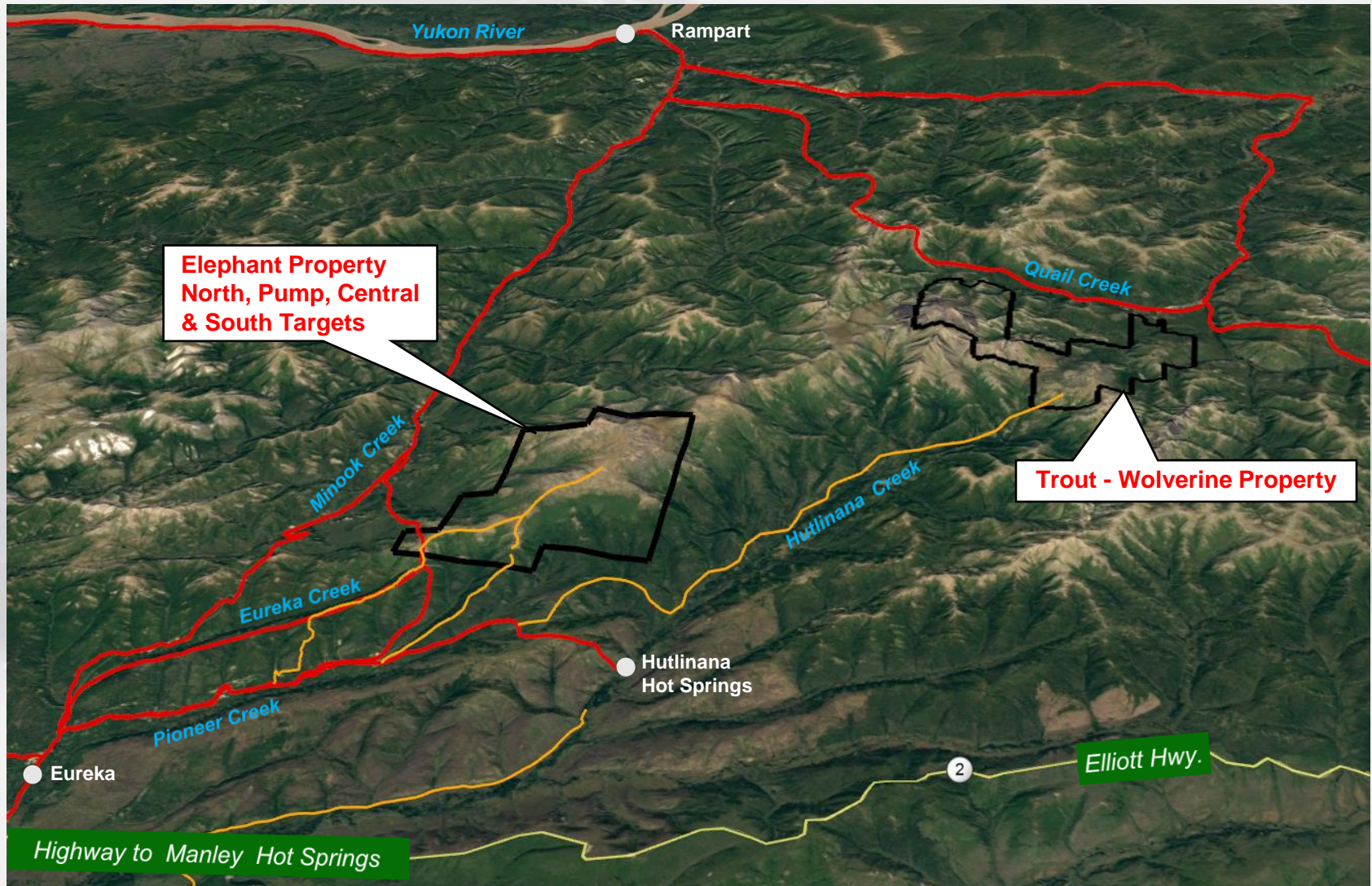


Map source: USGS Fact Sheet 2007-3061

Alaska Properties – Road Accessible



Elephant Mountain Gold Project



Elephant Mountain Gold Project

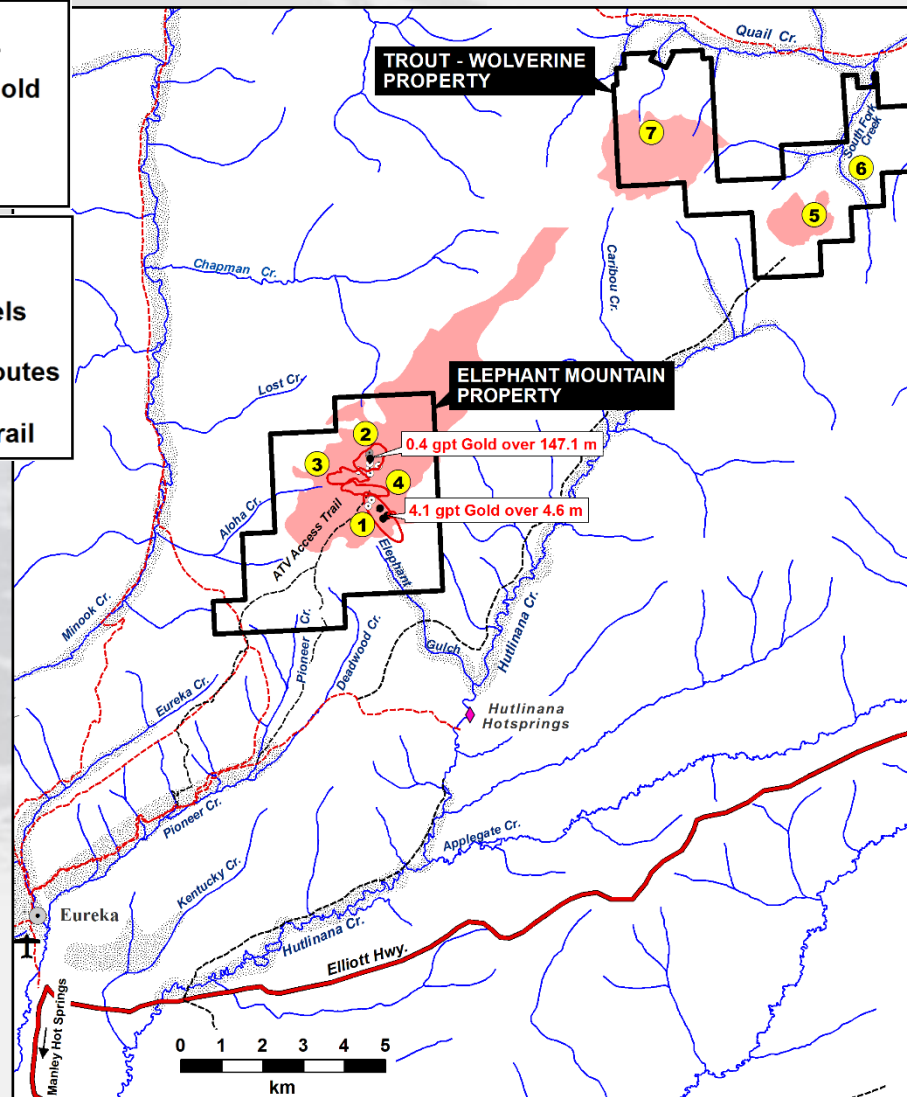
DIAMOND DRILLING

- 2016 Endurance Gold
- 2000 North Star
- 1992 Placer Dome

- Cretaceous Intrusives
- Gold Bearing Placer Gravels
- State Approved Access Routes
- All Terrain Vehicle (ATV) Trail

GOLD TARGETS

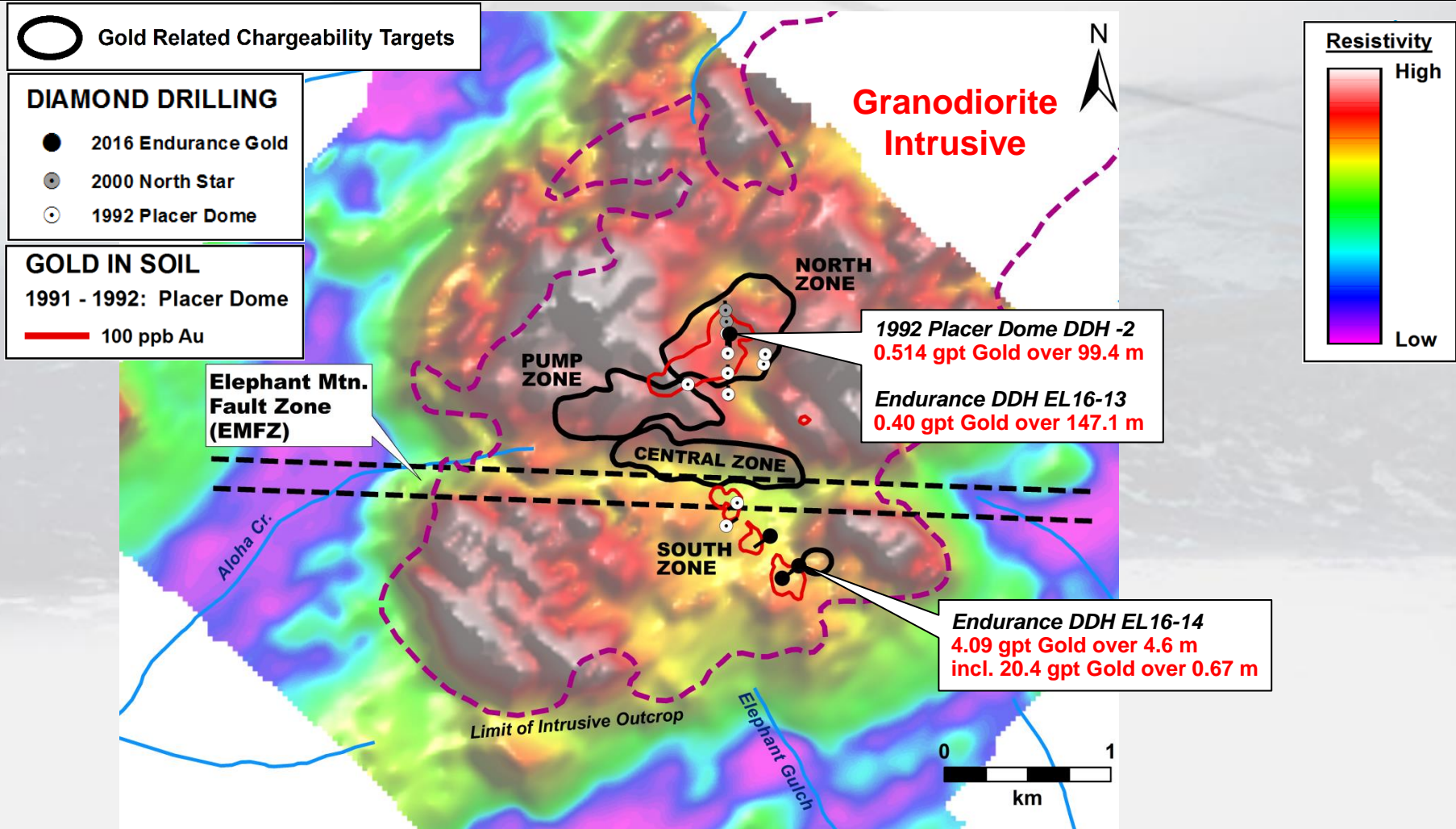
- ① South Zone
- ② North Zone
- ③ Pump Zone
- ④ Central Zone
- ⑤ Trout Peak
- ⑥ Trout South Fork
- ⑦ Wolverine Mtn.



Elephant Mountain Gold Project, Alaska

- Own 100% of Elephant Claims - Option to Earn 100% on Trout Claims
- Road and State trail accessible in Central Alaska. – Permitted for Drilling
- State Mining Claims – Central Alaska
- Target Similarity to Fort Knox AK, Golden Summit AK, Snowline, Eagle (Yukon)
- **Six** intrusive hosted gold target areas within a 12 x 5 km district **All zones are open to expansion through geochemical exploration**
- Drilling to date indicates a large 2 x 2 km gold mineralizing system straddling a wide intrusive-hosted fault zone with **4 targets**, 2 targets with wide low-grade gold and narrower high grade gold
- **South Zone Discovery** step - out drilling a high priority
- **North Zone, Pump Zone & Central Zone** chargeability targets warrant grid-drilling to discover higher grade feeder structures.
- **Trout Peak Target** a high priority for drilling
- **Trout South Fork** target warrants drilling

Elephant Mountain Gold Project Airborne Geophysics – 7200 Hz. Resistivity



Elephant Mountain Gold Project Intrusive Hosted - Induced Polarization Anomalies

SW

Looking West Northwest

NE

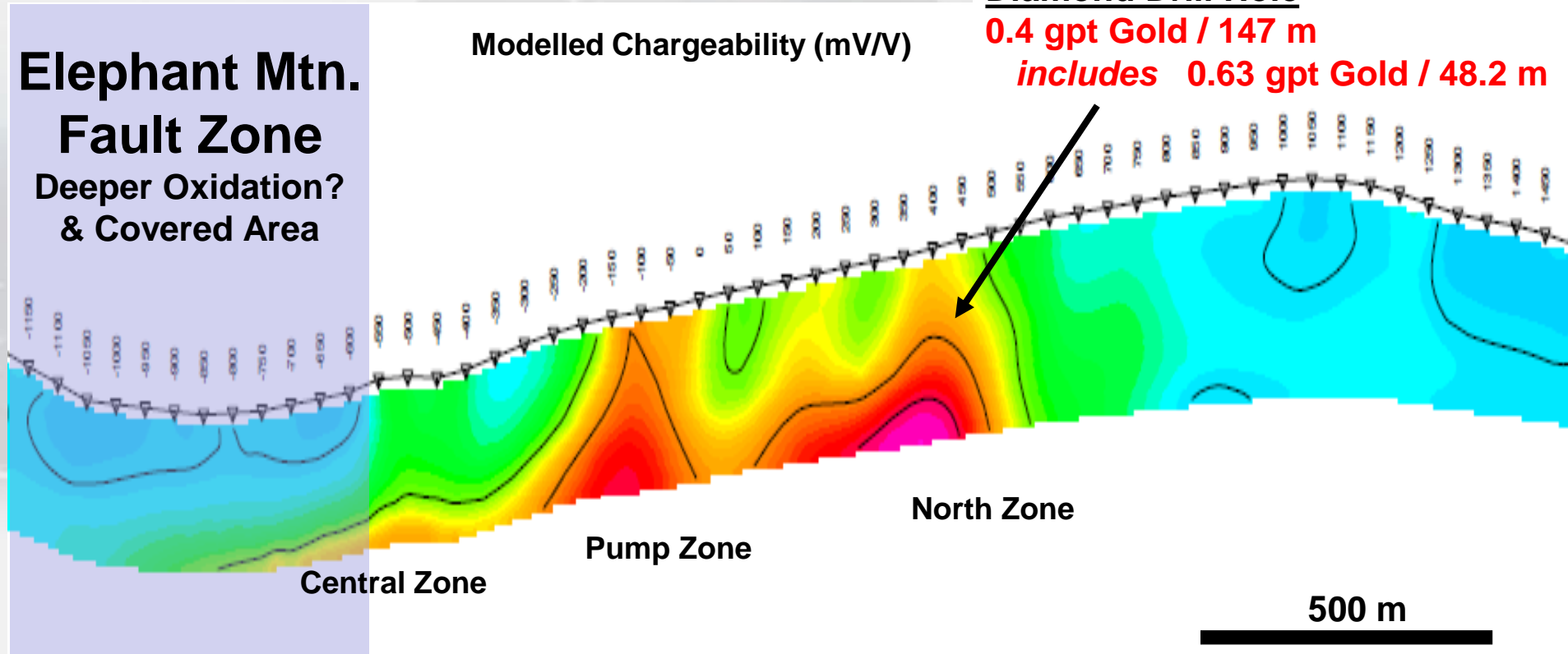
Diamond Drill Hole

0.4 gpt Gold / 147 m

includes 0.63 gpt Gold / 48.2 m

Modelled Chargeability (mV/V)

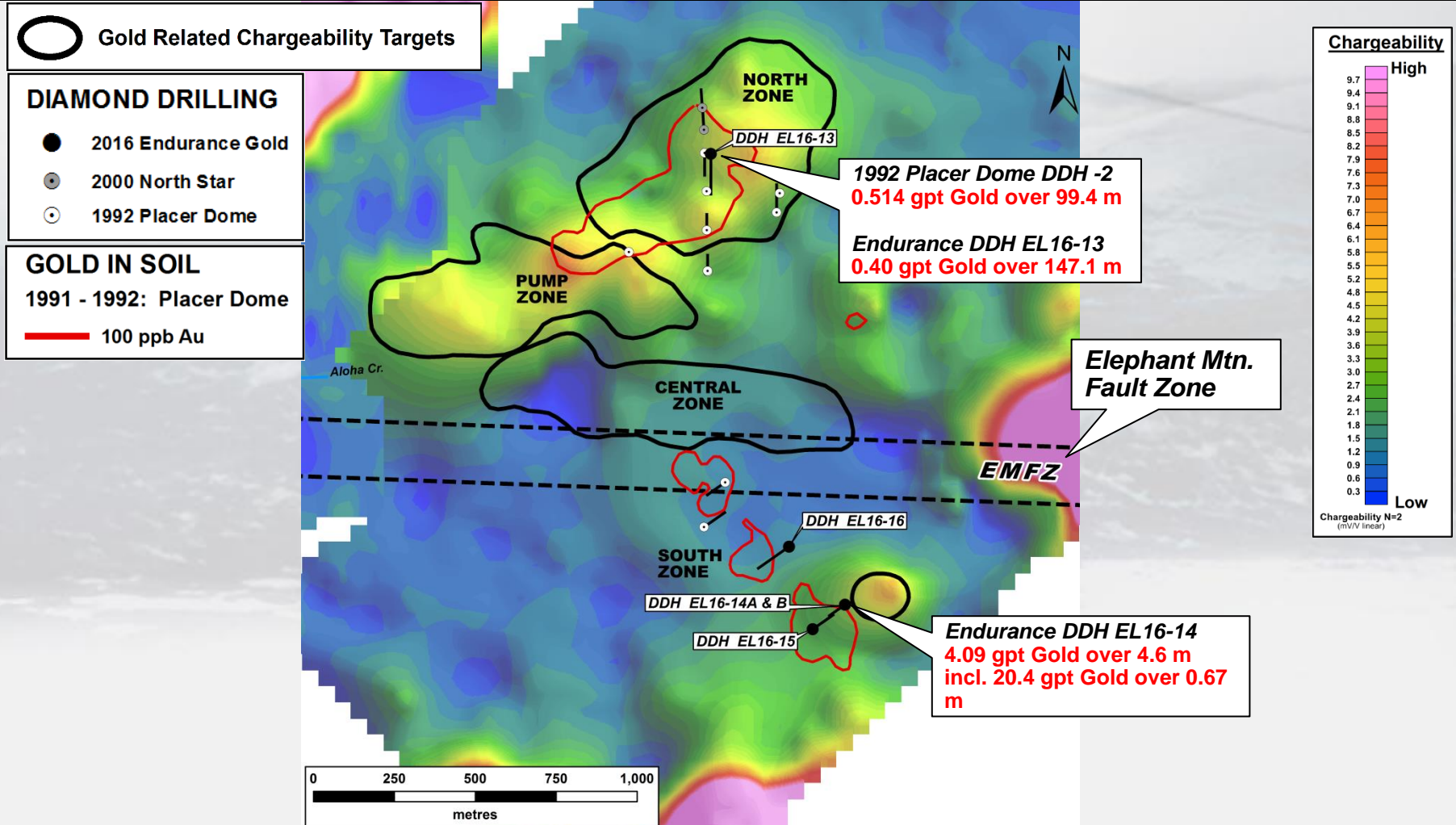
**Elephant Mtn.
Fault Zone**
Deeper Oxidation?
& Covered Area



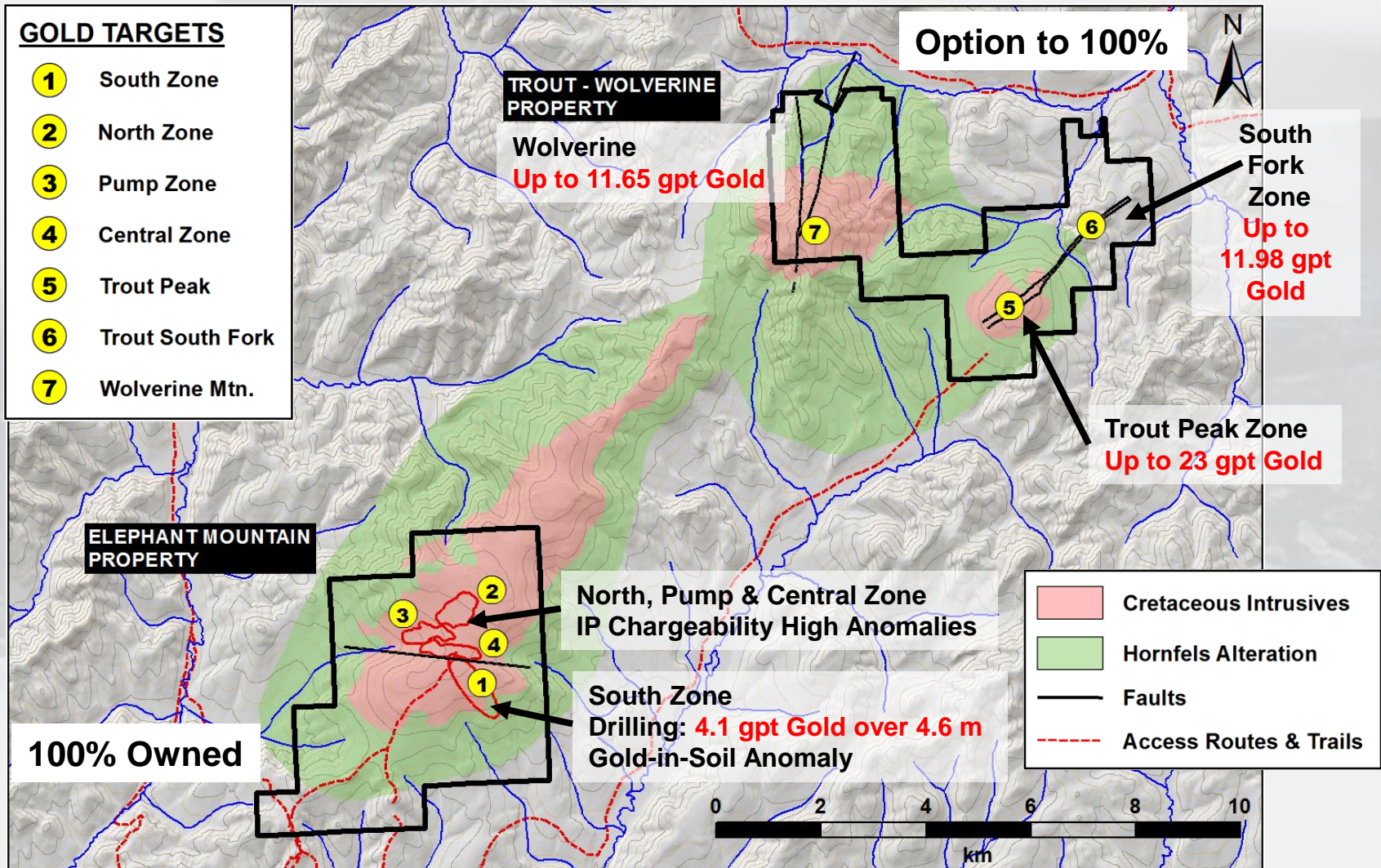
500 m

Elephant Mountain Gold Project

Chargeability (50m dipole) – N2



Elephant Mountain Gold Project – Area Geology





Elephant Mountain Gold Project

Eureka – Manley Hot Springs District, Alaska

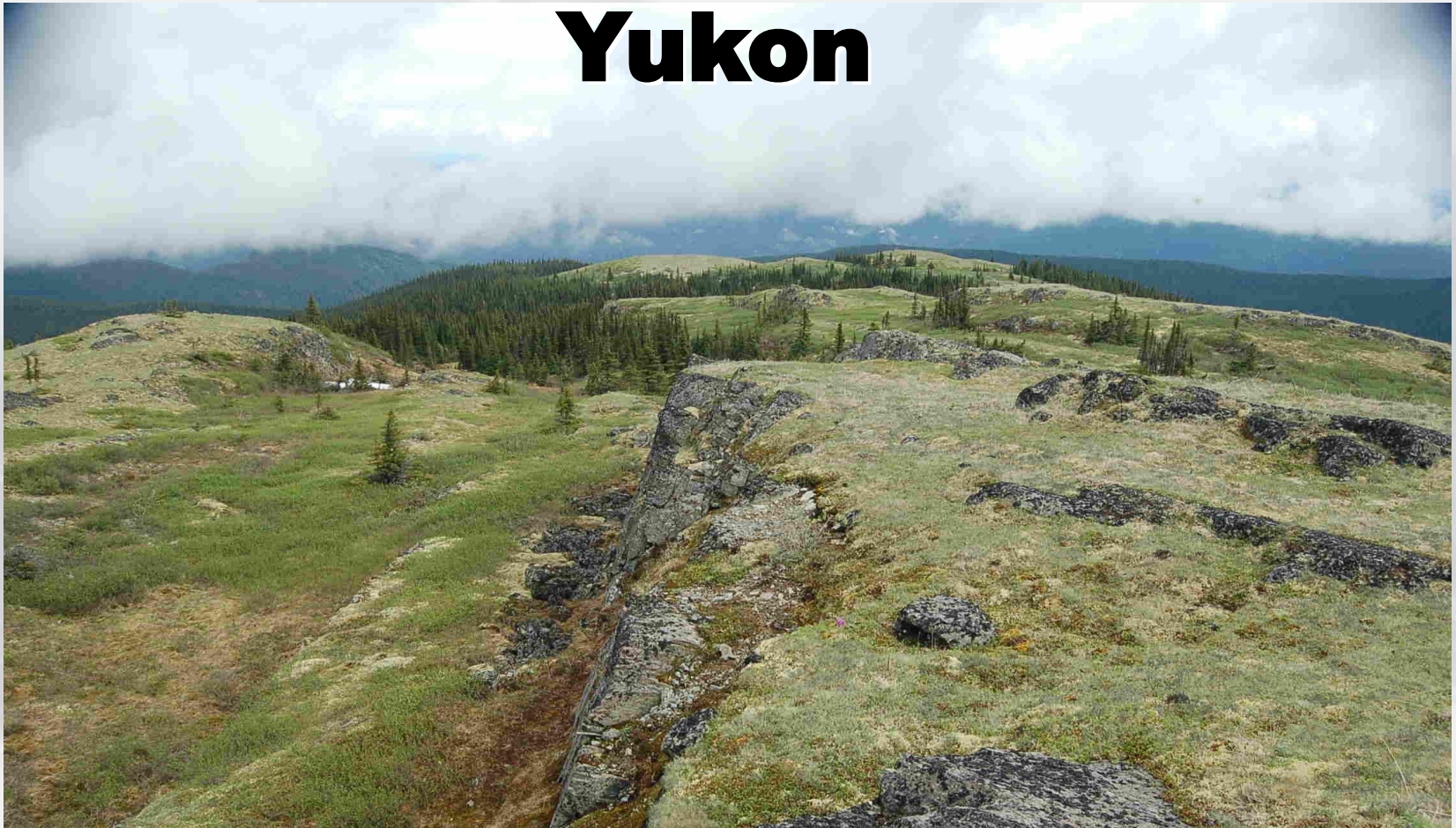
1. **Elephant Property** – 100% owned
2. **Trout - Wolverine Property** – Option to own 100%

Remaining obligation - US\$60,000 cash by Dec 2024

Both Properties subject to 1% NSR after buyout

BANDITO REE-Nb PROJECT

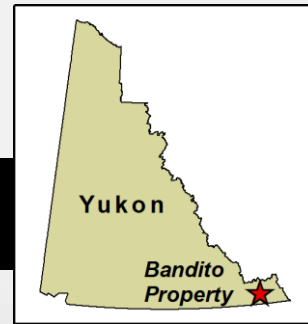
Yukon



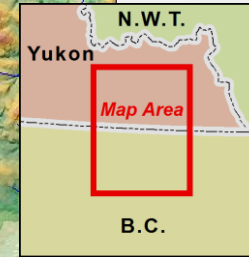
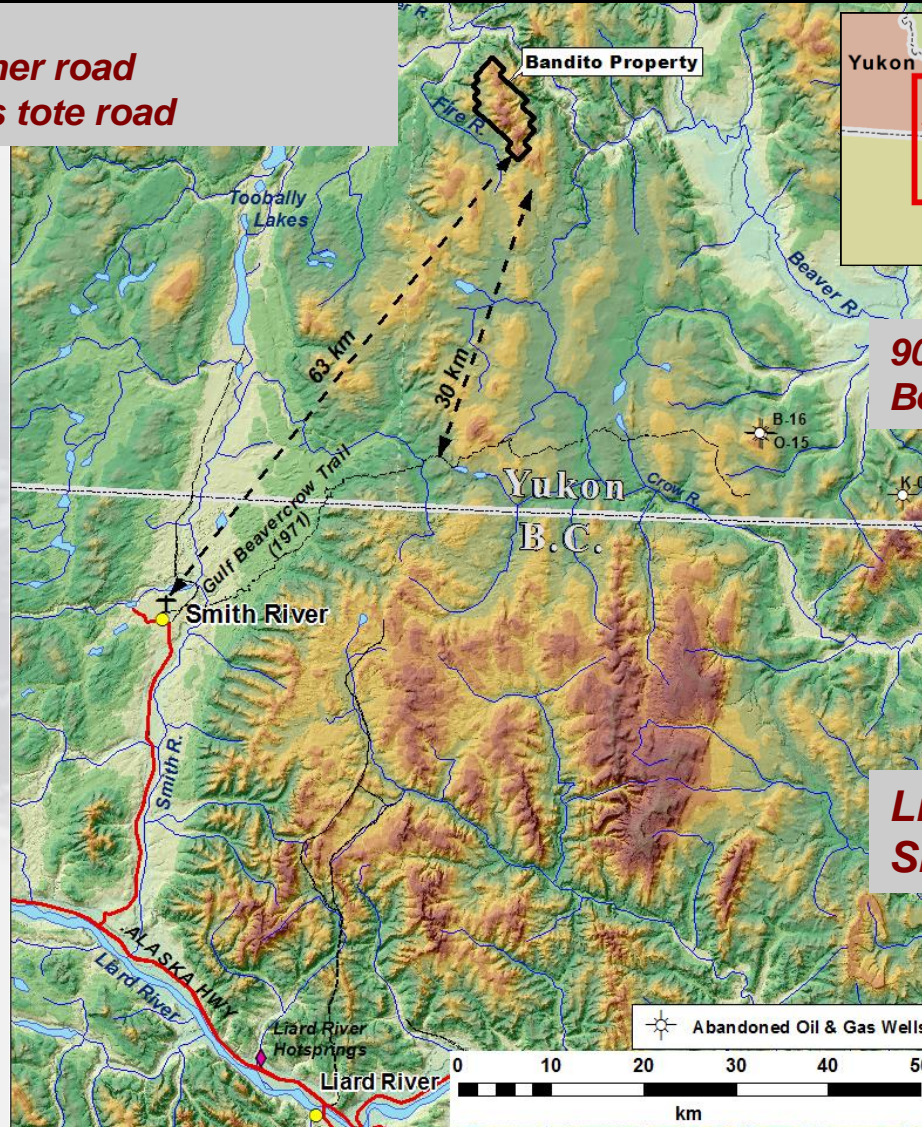
100% Endurance Owned
Rare Earth-Niobium-(Nickel-Copper) Target

Bandito Project, Yukon

Location Map



63 km from all weather road
30 km from oil & gas tote road

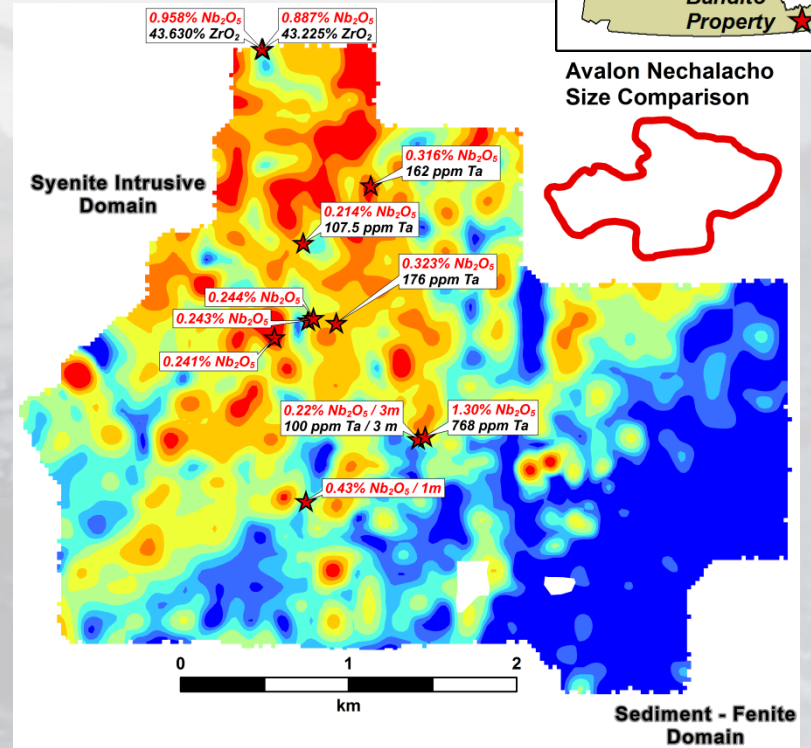
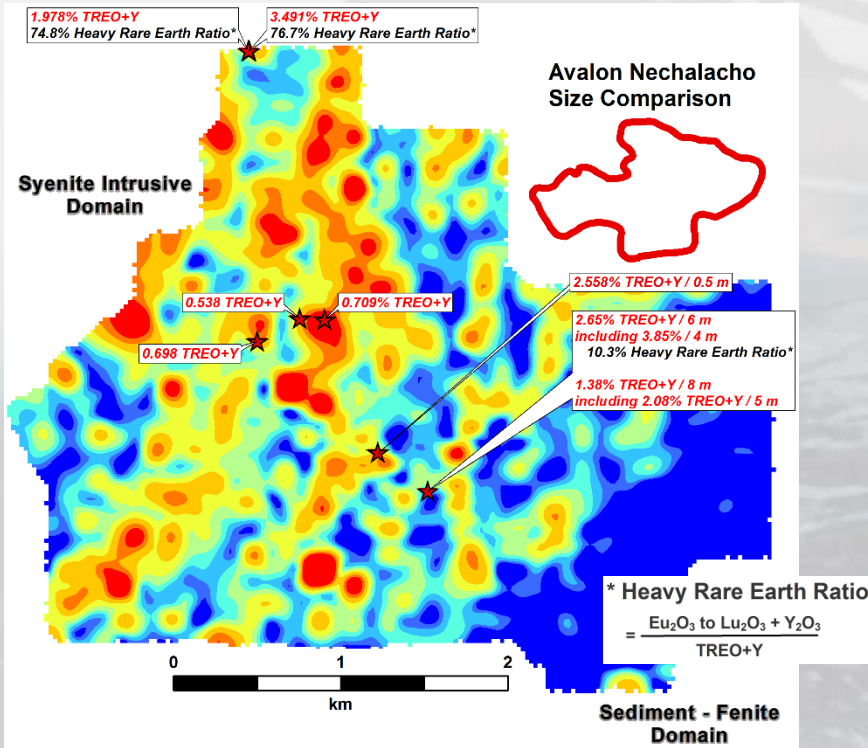
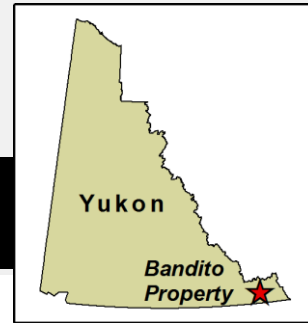


**90 kilometres to
Beaver River gas wells**

**Liard River
Shale Gas Basin**

Bandito Project, Yukon

Highlights REE & Niobium in Soil



2011 Soil Grid

Total REE & Yttrium

TREE+Y (ppm)	Percentile
600 - 3,534	> 95th
496 - 600	> 90th
389 - 496	> 80th
322 - 389	> 70th
280 - 322	> 60th
256 - 280	> 50th
233 - 256	> 40th
218 - 233	> 30th
40 - 218	< 30th

★ 2011 and 2012 Grab or Chip Sampling (% TREO+Y / metres)

Large Rare Earth and Niobium Soil Anomalies related to High REE-Nb bedrock values in Syenite

Soil Grid Sample Density
 2011 Grid = 100 m x 100 m

Niobium - Tantalum Statistical Correlation is 86.5%

★ 2011 and 2012 Grab or Chip Sampling (% Nb₂O₅ / metres)

Niobium in Soil

Nb (ppm)	Percentile
196 - 575	> 95th
146 - 196	> 90th
96 - 146	> 80th
68 - 96	> 70th
50 - 68	> 60th
40 - 50	> 50th
34 - 40	> 40th
29 - 34	> 30th
5 - 29	< 30th

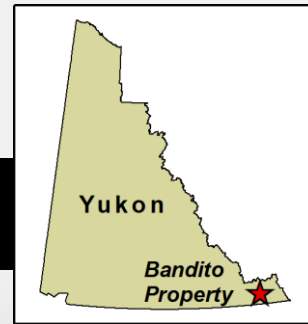
Tantalum in Soil

Ta (ppm)	Percentile
9.4 - 54	> 95th
6.9 - 9.4	> 90th
4.7 - 6.9	> 80th
3.4 - 4.7	> 70th
2.7 - 3.4	> 60th
2.3 - 2.7	> 50th
2.1 - 2.3	> 40th
1.8 - 2.1	> 30th
0.1 - 1.8	< 30th

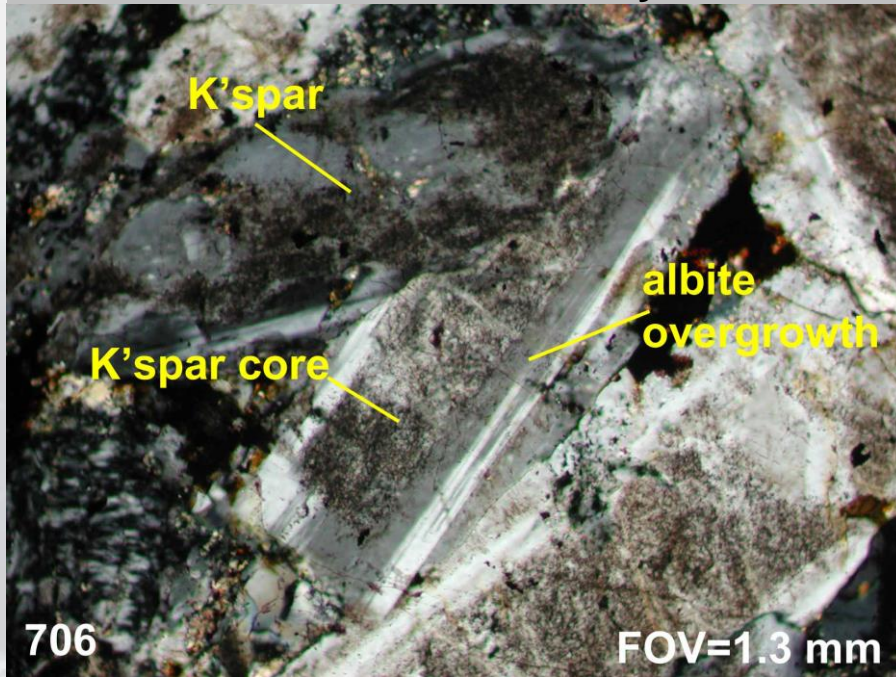
Soil Grid Sample Density
 2006 Grid = 50 m x 25 m
 2011 Grid = 100 m x 100 m

Bandito Project, Yukon

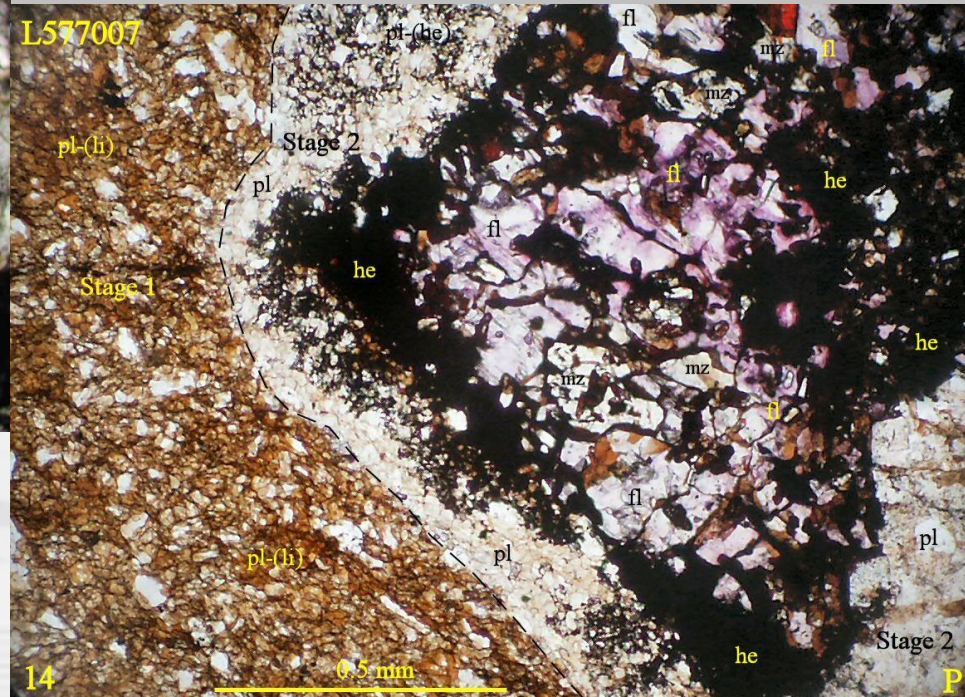
Sodium and Potassium Metasomatism



Albite – potassium feldspar Fenite
or fenitized intrusive dykes



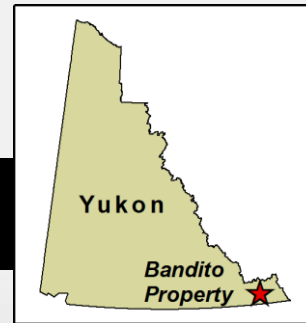
Multistage fluorite hematite monazite
plagioclase Fenite



Grabs up to 6.8% TREO

Bandito Project, Yukon

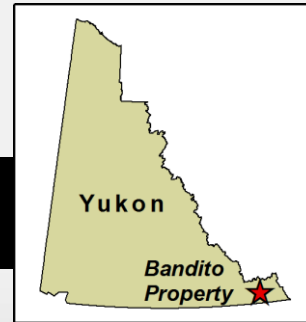
Project Highlights



- 1. Drill Ready REE target** - 3.0 by 0.5 Km Rare Earth System in Fenite – 2.3% TREO+Y over 6 m with 10.8% Heavy Rare Earths in Fenite - plus consistently high niobium values in Fenite.
- 2. Drill Ready Nb-Ta targets** - Over 30 chip & grab samples contain in excess 0.143% Nb_2O_5 with values up to 1.3% Nb_2O_5 and 0.094% Ta_2O_5 in syenite.
3. Up to 1.8 km by 600 m TREE+Y and Niobium-Tantalum soil anomalies in +4 square km altered “Red Syenite” together with values up to 3.49% TREO+Y with 76% Heavy Rare Earth and 0.96% Nb_2O_5 indicate discovery potential for volumetrically large Syenite-Intrusive hosted REE-niobium-tantalum deposits.
Drill Ready after intensive prospecting and trenching.
4. The alteration and “pregnant” rare metals system remains open to expansion within the current property.
5. The Copper-Nickel “Discovery” soil anomaly is 1000 by 600 m, much larger than the area of known mineralization (580 by 200 metres). **Drilling warranted.**

Bandito Project, Yukon

Next Steps



1. LiDAR Completed in 2022 – assist with defining lithological contacts, intrusive contacts
2. Airborne + Ground Geophysics – To define system size with radiometrics.
3. Additional soil & rock sampling – To define limits of the large intrusive-hosted rare earth, niobium, and tantalum system.
4. Yukon Class 1 Permit approved for 2023 – 2024 Renewal in Progress
this permit allows some recon drilling
5. Class 3 Drill and Trench permit application under consideration.
6. Drilling – Several rare earth, niobium/tantalum and nickel-copper targets warrant drill testing.
7. Trenching – To identify controls and extent of rare earth and niobium-tantalum mineralization in intrusive-hosted and fenite targets.



www.endurancegold.com

Robert T. Boyd, P.Geo. is a qualified person as defined in National Instrument 43-101 and supervised the compilation of the information forming the basis for this summary. Any historic data summarized in this presentation should not be relied upon.

Suite 1212 – 666 Burrard Street
Vancouver, BC V6C 2X9 Canada
Toll Free Phone: 877-624-2237

EDG: TSX.V | ENGF: OTC Pink | Frankfurt: 3EG