



Reliance Gold Project Gold Bridge, B.C.

October 23, 2024

Corporate Disclosure

The information contained herein, while obtained from sources which we believe are reliable, is not guaranteed as to its accuracy or completeness. The company is an exploration stage mineral resource exploration company and none of its mineral projects have yet to be proven to be economic. The contents of this presentation is for information purposes only and does not constitute an offer to sell or a solicitation to purchase any securities referred to herein.

Forward-looking Statements

This presentation contains “forward-looking information” within the meaning of applicable Canadian securities regulations. All statements other than statements of historical fact herein, including, without limitation, statements regarding the company’s plans, goals or objectives and future exploration, development, potential mineralization, exploration results and future plans are forward-looking statements that involve various risks and uncertainties. There can be no assurance that such statements will prove to be accurate, and actual results and future events could differ materially from those anticipated in such statements. Readers are advised not to place an undue reliance on forward-looking statements.

Corporate Snapshot

Shares Outstanding <i>(Oct. 16, 2024)</i>	173.2m
Market Capitalization <i>(C\$0.14 – Oct. 16, 2024)</i>	C\$24.2 m
Options <i>(C\$0.20 – C\$0.34)</i>	10.0 m
Warrants <i>(C\$0.32 – C\$0.55)</i>	14.2 m
Fully Diluted <i>(Oct. 16, 2024)</i>	197.4 m
Working Capital <i>(June 30, 2024)</i>	C\$5.96 m*

* includes marketable securities



**Insiders
own
over 60%**

Key People

Robert T. Boyd
President, CEO & Director

Darren O'Brien
Vice President Exploration

Teresa Cheng
CFO & Corporate Secretary

Richard Gilliam
Director

H. Ross Arnold
Director

Robert Pease
Director

J. Christopher Mitchell
Director

Reliance Gold Project

Bralorne Camp, Gold Bridge, B.C.

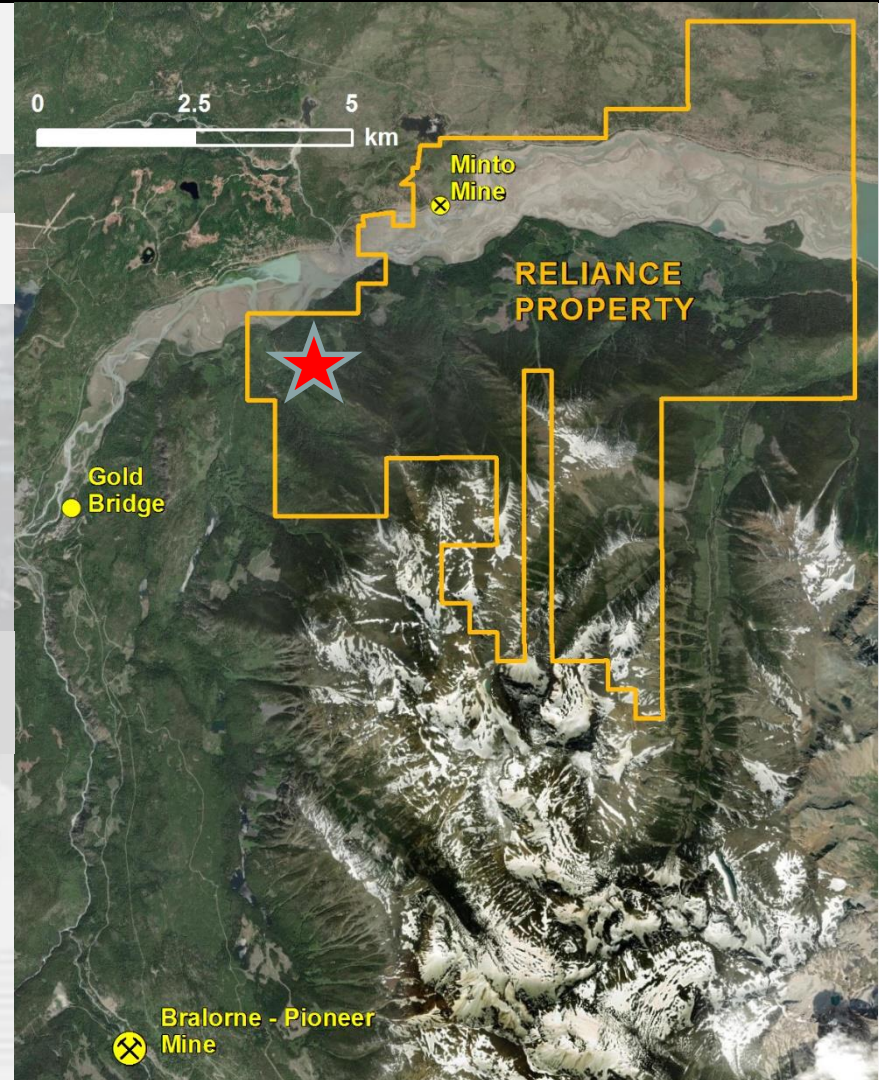
New Surface Discovery

10 km from historic Bralorne Camp
(+4 million ounces of historic production)



4 hour Drive
from Vancouver


Imperial and
Eagle Zones



Reliance Gold Project, Gold Bridge, BC Program Activity Highlights 2020 to 2024

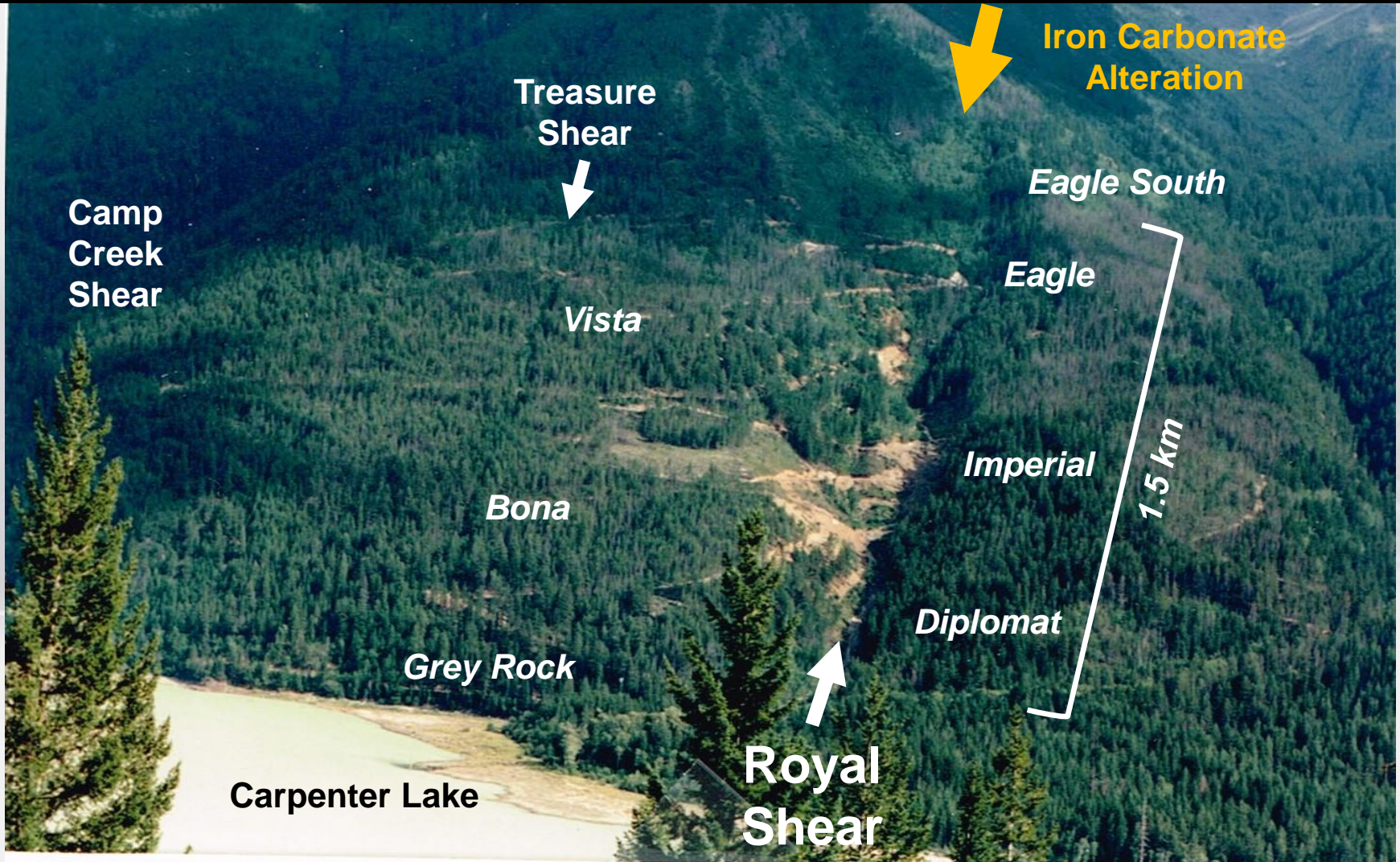
“Discovery Stage” Gold Project in a productive gold camp.

- Early Exploration between 1985 and 2008 - limited focus over about 100 m - Never systematically explored
- Progress since 2020 – Systematically Expanded potential to 2 km.
- 2020 to 2022 – Surface channel sampling - **Excellent Surface Results**
- 2020, 2021 & 2022 - Reverse Circulation (‘RC’) drilling - **84 RC holes**
- 2021 to 2024 - **92 Diamond Drill Holes** at Eagle & Imperial Zones
- **Excellent drilling Results statistics – Results Pending on over 12 DDH**
- Highlights - Eagle Expanded to 550 m strike – Deep +30 m wide Imperial Zone
- **2024 Drilling – Objective to grow on Strike and at Depth**

Reliance Gold Project, B.C. Best Diamond Drill Holes 2021 to 2023

<u>Zone & DDH</u>	<u>From</u>	<u>g/t X m</u>	<u>Au g/t / Metre</u>
Eagle - 22-058	32.1	426	3.05 gpt / 139.9m
Eagle - 21-020	33.3	389	15.70 gpt / 24.8m
Imperial - 21-009	161.0	210	8.47 gpt / 24.9m
Eagle - 21-006	25.6	210	8.62 gpt / 24.4m
Eagle - 23-076	9.3	133	5.80 gpt / 23.0m
Eagle - 22-027	109.2	124	4.16 gpt / 30.0m
Eagle - 22-026	80.4	108	8.06 gpt / 13.5m
Eagle - 22-024	27.0	100	8.41 gpt / 12.0m
Eagle - 22-036	35.4	97	7.65 gpt / 12.7m
Eagle - 22-031	124.9	90	7.58 gpt / 11.9m
Eagle - 22-045	35.1	84	7.31 gpt / 11.6m
Eagle - 21-004	1.0	84	4.44 gpt / 19.0m
Imperial - 23-065	212.8	83	8.98 gpt / 9.3m
Eagle - 22-028	97.0	82	2.59 gpt / 31.6m
Imperial - 23-066	306.5	72	17.28 gpt / 4.2m

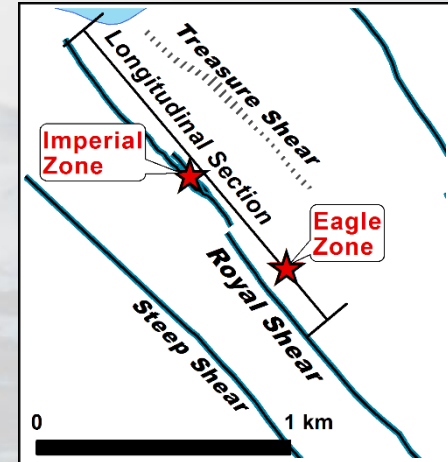
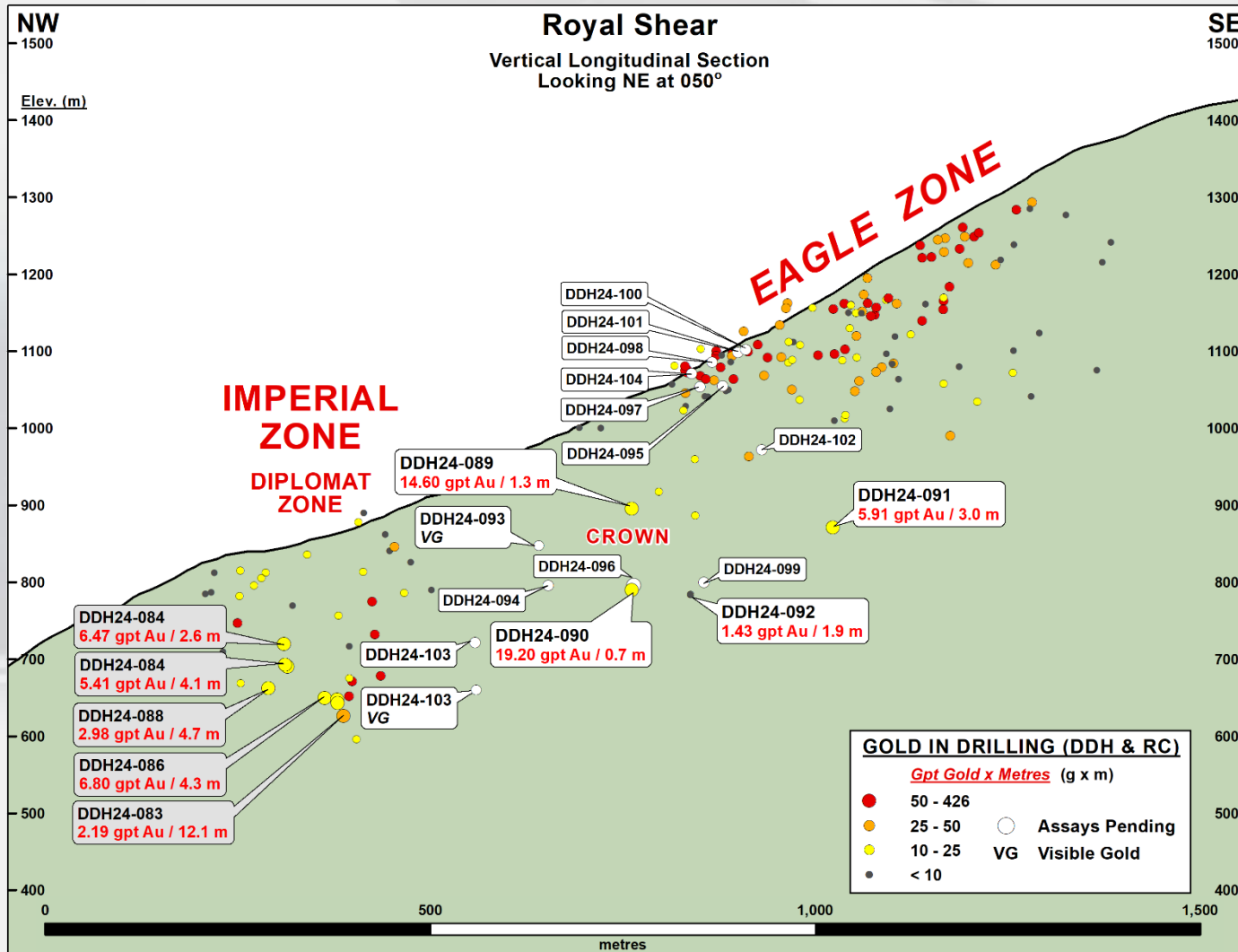
Reliance Gold Project Bralorne Camp, Gold Bridge B.C.



Reliance Gold Project 2024 Drill Hole Locations



Reliance Gold Project Entire Longitudinal Section – 2024 Update



Reliance Gold Project

Royal Shear Geology & Cross Sections



REPORTED GOLD INTERCEPTS

5.00 gpt Gold / 9.8 m

2023 Diamond Drill Intercept

DRILLING BY ENDURANCE GOLD

- Diamond Drill Hole
 - Reverse Circulation (RC) Drill Hole
- Select drill traces shown Au = Gold

MINERALIZATION

- Surface Exposed Mineralization
- Mineralization Trend Projected from depth

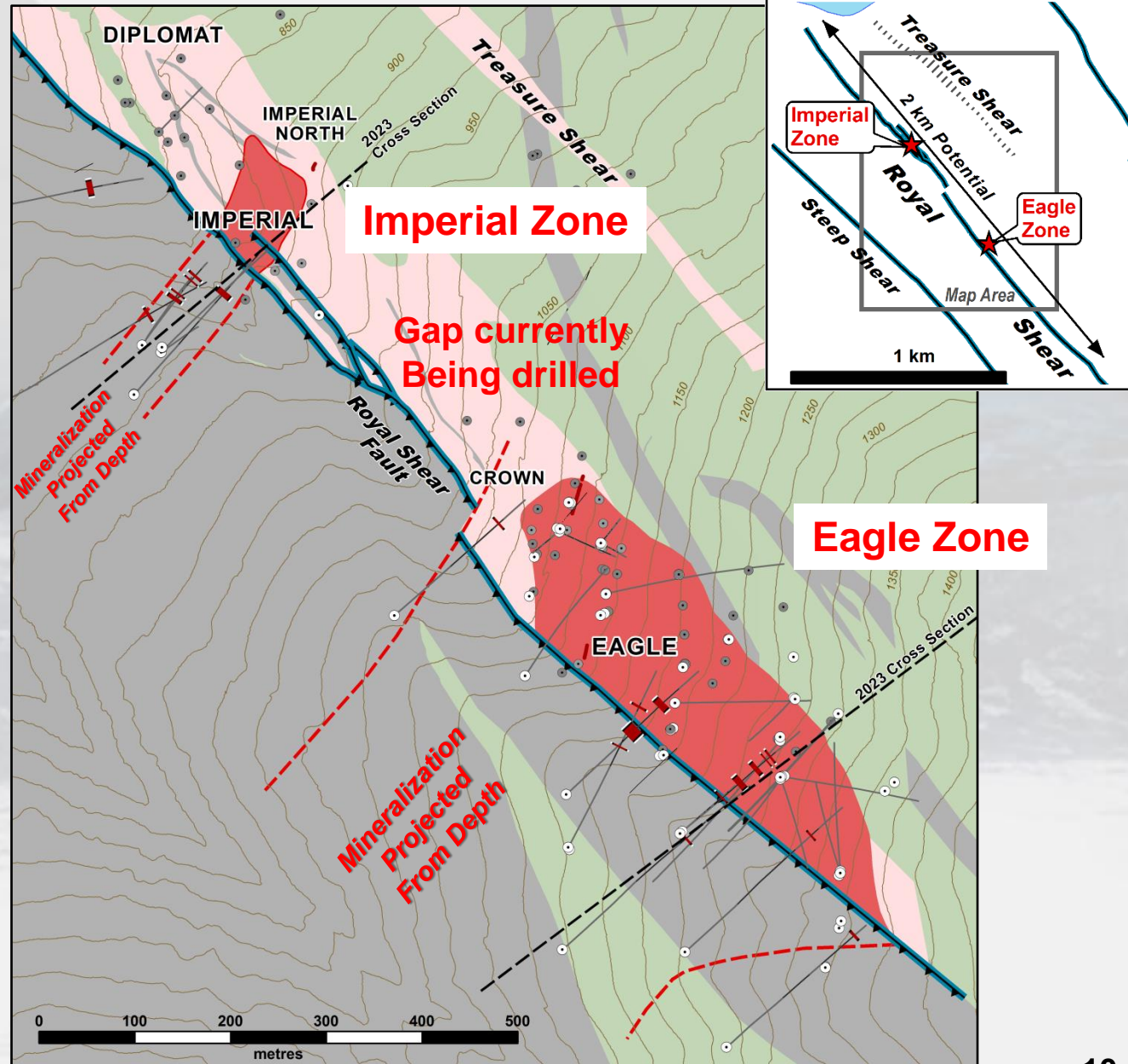
GEOLOGY

ALTERATION

- Ankerite Alteration +/- Quartz

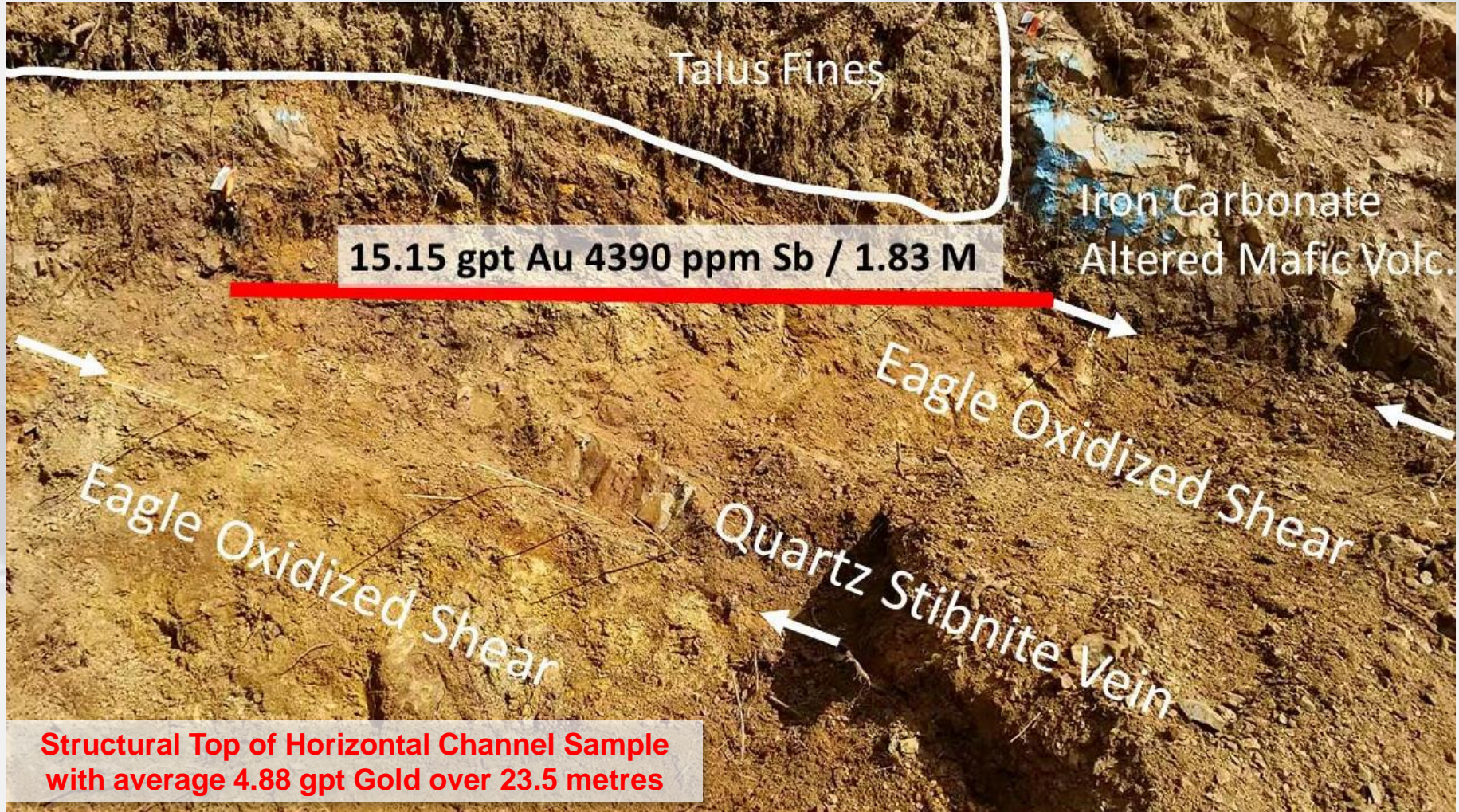
ROCK TYPE

- Mafic Volcanic / Gabbro
- Argillite and Chert



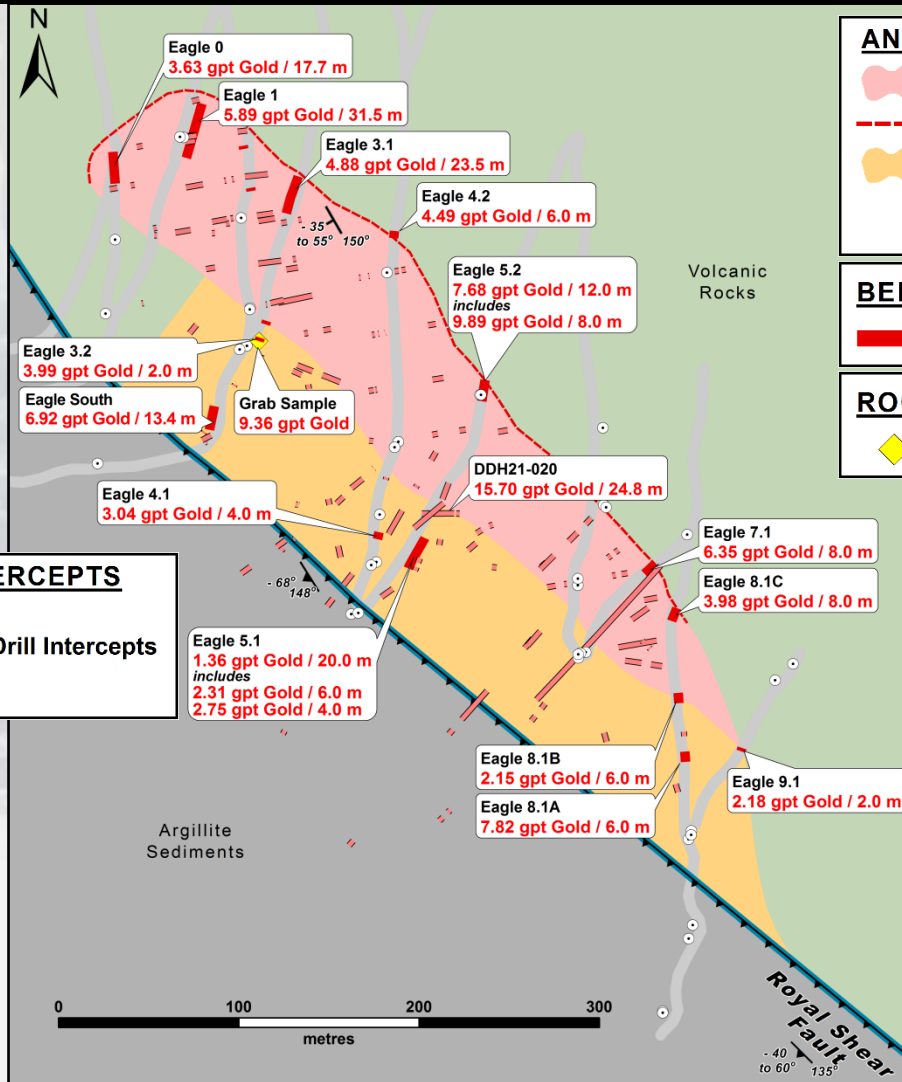
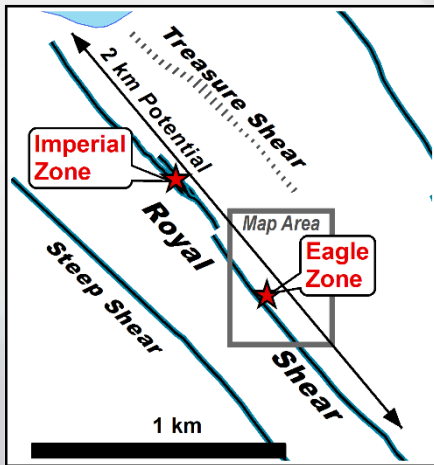
Reliance Gold Project

Eagle Zone at Eagle 3 Road – West Dipping Shear Zone



Reliance Gold Project

Bedrock Channel Samples Eagle Zone



DRILLING REPORTED GOLD INTERCEPTS
Projected Vertically to Surface

- 2020-2022 Reported DDH & RC Drill Intercepts
- Diamond Drill Hole Location


ANOMALIES & MINERALIZATION

-  **Eagle Zone**
-  **Eagle Zone Surface Exposure**
-  **Eagle South Feeder Zone**
*Intense brittle-ductile deformation
Strong pervasive ankerite-sericite alteration
Multiple brecciated quartz veins*

BEDROCK CHANNEL SAMPLING

-  Channel Sample Gold Intercept

ROCK GRAB SAMPLING

-  2022 Rock Grab Sample

Eagle Channel Samples indicate 550 m of strike trend

Sample ID	Gold Grade (gpt)	Interval (m)
Eagle 0	3.63	17.7
Eagle 1	5.89	31.5
Eagle 3.1	4.88	23.5
Eagle 4.2	4.49	6.0
Eagle 5.2	7.68	12.0
includes		9.89 gpt Gold / 8.0 m
Eagle 3.2	3.99	2.0
Eagle South	6.92	13.4
Grab Sample	9.36	
Eagle 4.1	3.04	4.0
DDH21-020	15.70	24.8
Eagle 7.1	6.35	8.0
Eagle 8.1C	3.98	8.0
Eagle 5.1	1.36	20.0
includes		2.31 gpt Gold / 6.0 m
		2.75 gpt Gold / 4.0 m
Eagle 8.1B	2.15	6.0
Eagle 8.1A	7.82	6.0
Eagle 9.1	2.18	2.0

Reliance Gold Project, BC – 2020, 2021 & 2022 RC Drilling

- Completed **84 RC Drill Holes** in 2020, 2021 and spring 2022.
- Excellent results statistics in RC - **40 of 84 RC holes returned > 10 gram*m**
- Most of the Best RC holes in the **EAGLE Area** - with some excellent results:
 - **14.08 gpt Gold over 15.24 m**
 - **8.57 gpt Gold over 10.66 m**
- **IMPERIAL Zone** – Up plunge Intersection - **7.23 gpt Gold over 4.6 m**
- **DIPLOMAT Zone** - **16.49 gpt Gold over 4.57 m**

Reliance Gold Project, BC – 2021 to 2024 DDH Statistics

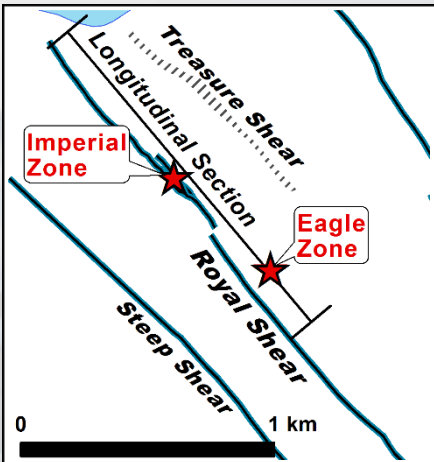
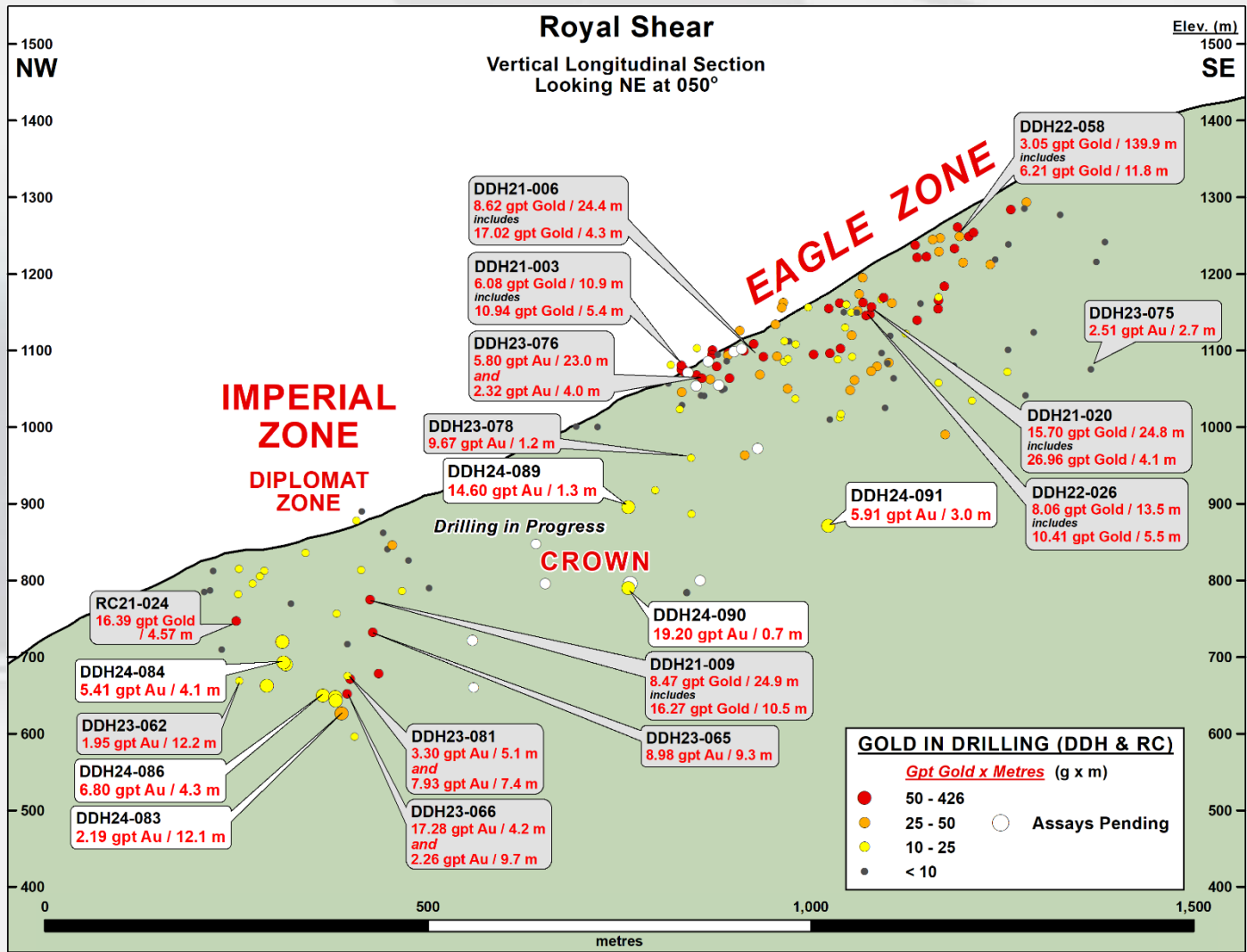
1. Completed **92 Diamond** Drill Holes between 2021 to 2024 (with Assays)
2. Majority of Drill holes at the **Eagle Area – SIGNIFICANT DISCOVERY**
 - 15.7 gpt Gold over 24.8 m including 26.96 gpt Gold over 4.1 m
 - 8.62 gpt Gold over 24.4 m including 17.02 gpt Gold over 4.3 m
 - 8.41 gpt Gold over 12.0 m, 8.05 gpt Gold over 13.0 m.
 - 3.05 gpt Gold / 139.9 m, 4.16 gpt Gold / 30.0 m, 5.8 gpt Gold / 23 m
3. 17 Diamond Drill holes at the **Imperial Zone** – majority mineralized
 - 8.47 gpt Gold over 24.9 m including 16.27 gpt Gold over 10.5 m
 - 8.98 gpt Gold over 9.3 m including 12.44 gpt Gold over 6.0 m
 - 17.28 gpt Gold over 4.2 m including 35.20 gpt Gold over 1.3 m
4. **60 of 92 DDH** have significant intersections exceeding 10 gram X metre (minimum 3 m mineralized width)
5. **15 of 82 DDH** have excellent drill intersections (72 to 426 gram X metre)

Reliance Gold Project, B.C.

Best Diamond Drill Holes 2021 to 2023

<u>Zone & DDH</u>	<u>From</u>	<u>g/t X m</u>	<u>Au g/t / Metre</u>
Eagle - 22-058	32.1	426	3.05 gpt / 139.9m
Eagle - 21-020	33.3	389	15.70 gpt / 24.8m
Imperial - 21-009	161.0	210	8.47 gpt / 24.9m
Eagle - 21-006	25.6	210	8.62 gpt / 24.4m
Eagle - 23-076	9.3	133	5.80 gpt / 23.0m
Eagle - 22-027	109.2	124	4.16 gpt / 30.0m
Eagle - 22-026	80.4	108	8.06 gpt / 13.5m
Eagle - 22-024	27.0	100	8.41 gpt / 12.0m
Eagle - 22-036	35.4	97	7.65 gpt / 12.7m
Eagle - 22-031	124.9	90	7.58 gpt / 11.9m
Eagle - 22-045	35.1	84	7.31 gpt / 11.6m
Eagle - 21-004	1.0	84	4.44 gpt / 19.0m
Imperial - 23-065	212.8	83	8.98 gpt / 9.3m
Eagle - 22-028	97.0	82	2.59 gpt / 31.6m
Imperial - 23-066	306.5	72	17.28 gpt / 4.2m

Reliance Gold Project Entire Longitudinal Section – Open to Expansion



Reliance Gold Project Royal Shear Geology & Cross Sections



REPORTED GOLD INTERCEPTS

5.00 gpt Gold / 9.8 m

2023 Diamond Drill Intercept

DRILLING BY ENDURANCE GOLD

- Diamond Drill Hole
 - Reverse Circulation (RC) Drill Hole
- Select drill traces shown Au = Gold

MINERALIZATION

- Surface Exposed Mineralization
- Mineralization Trend Projected from depth

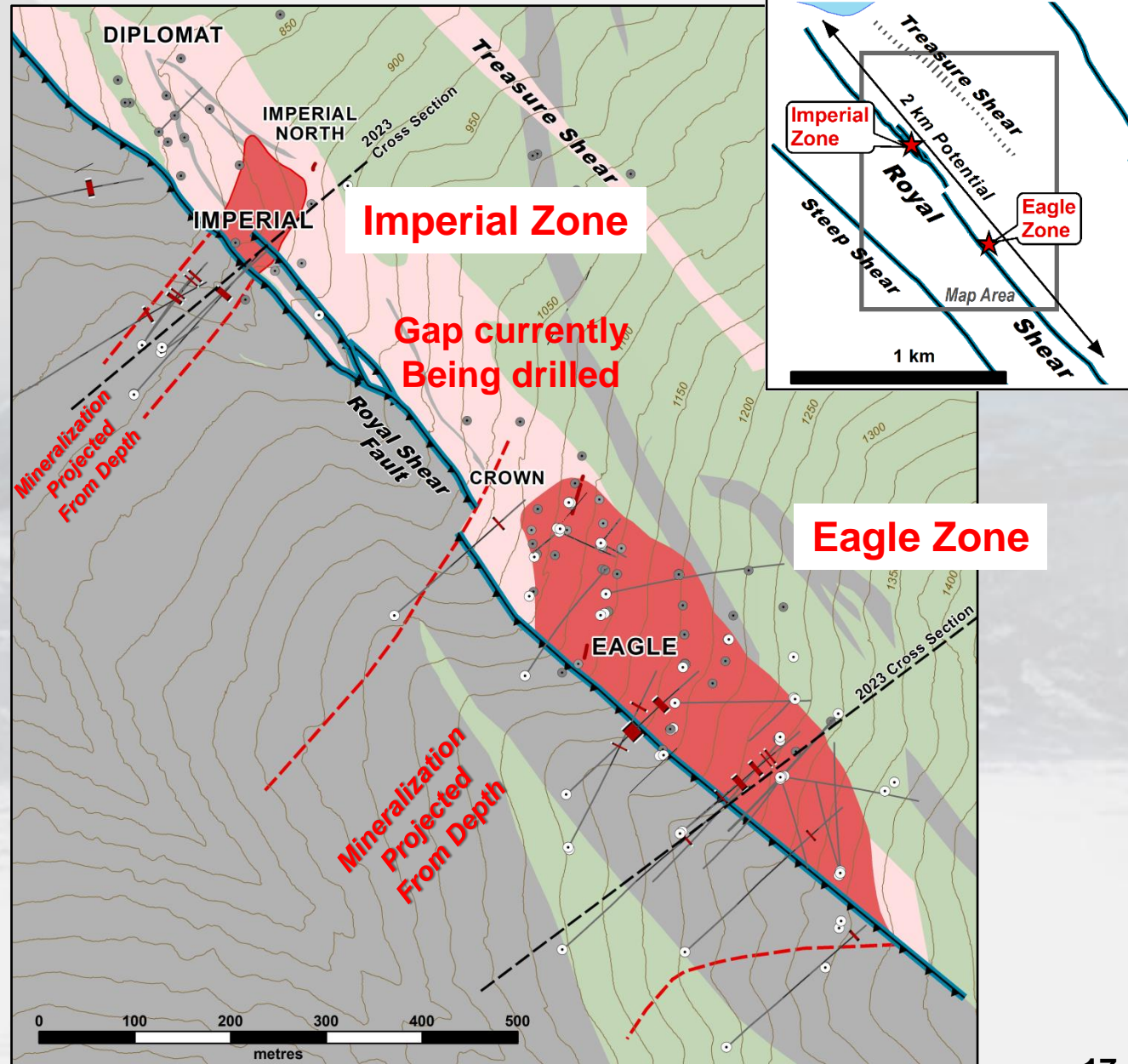
GEOLOGY

ALTERATION

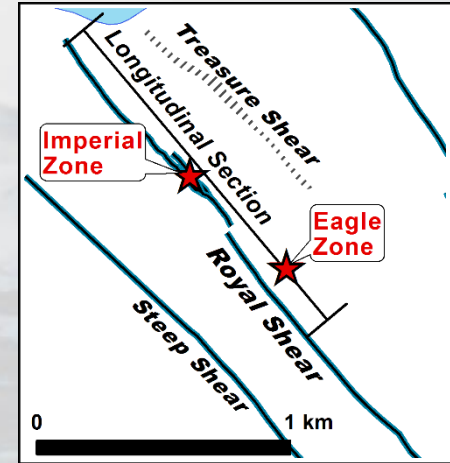
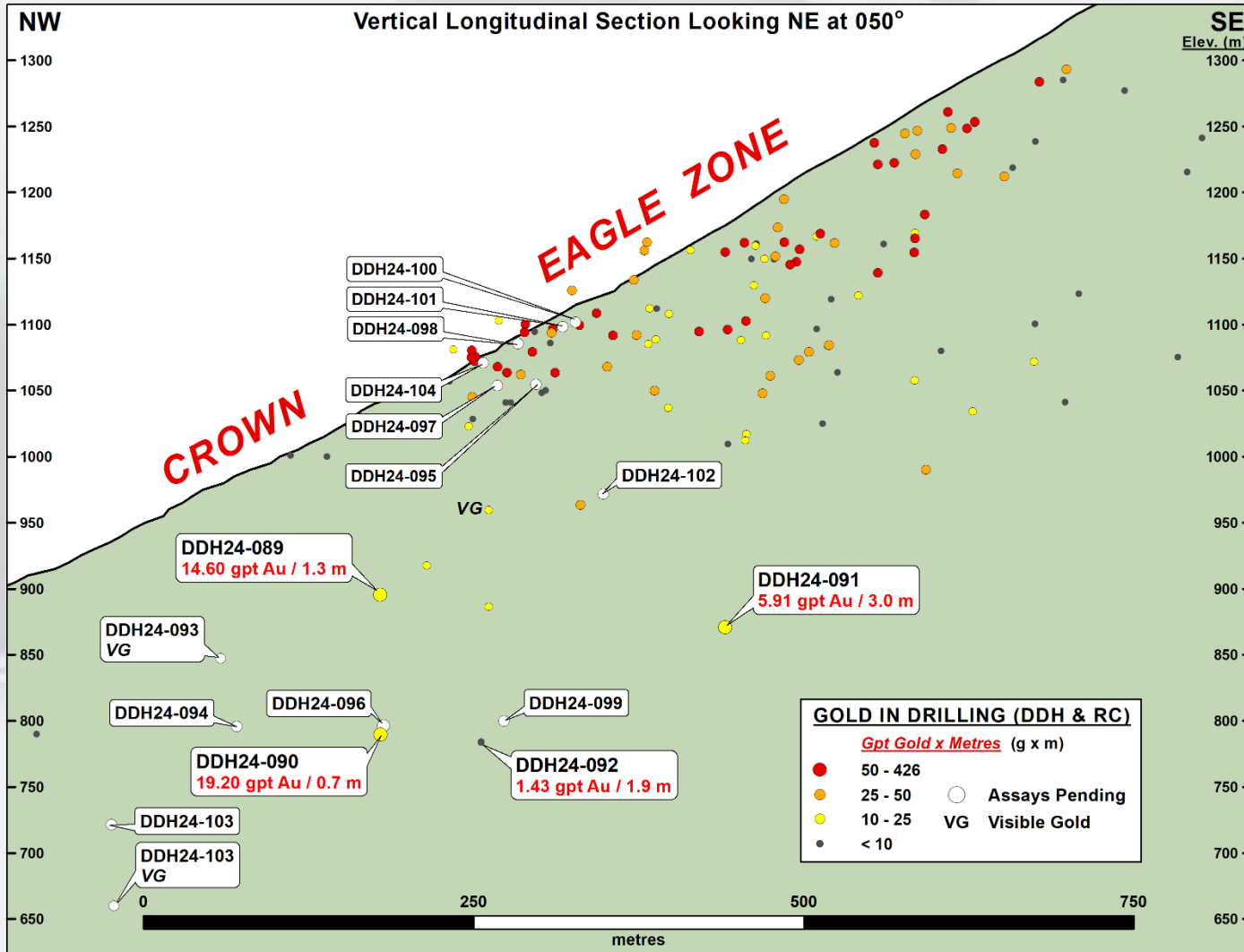
- Ankerite Alteration +/- Quartz

ROCK TYPE

- Mafic Volcanic / Gabbro
- Argillite and Chert



Reliance Gold Project Eagle - Crown Longitudinal Section – 760 m Trend



Reliance Gold Project

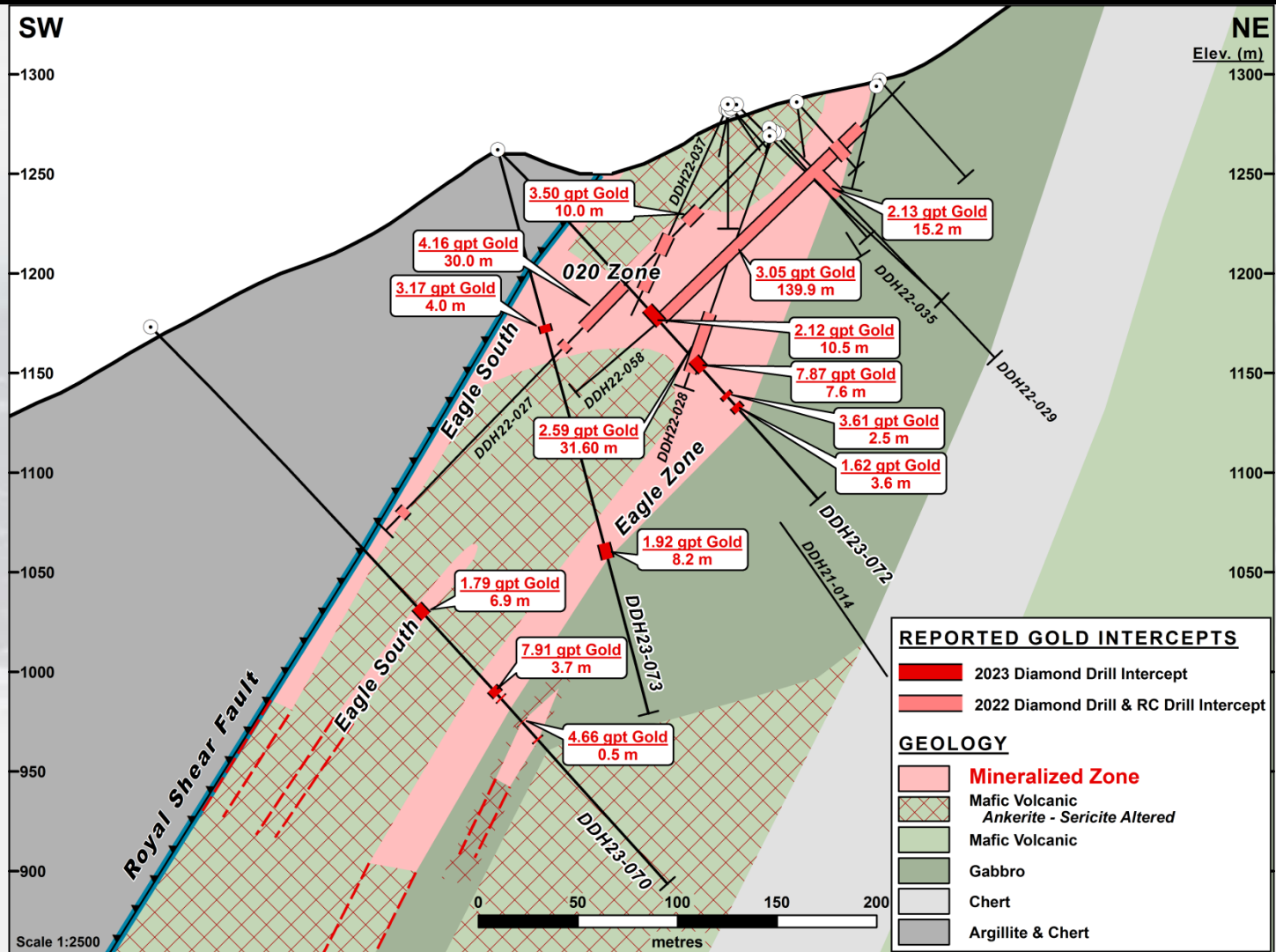
Visible Gold in 2024 Drilling: DDH24-103

DDH24-103 **Visible gold** in Quartz Vein



Reliance Gold Project

Eagle Cross Section DDH23-070, -072, -073



Reliance Gold Project

Eagle to Imperial Structural Model

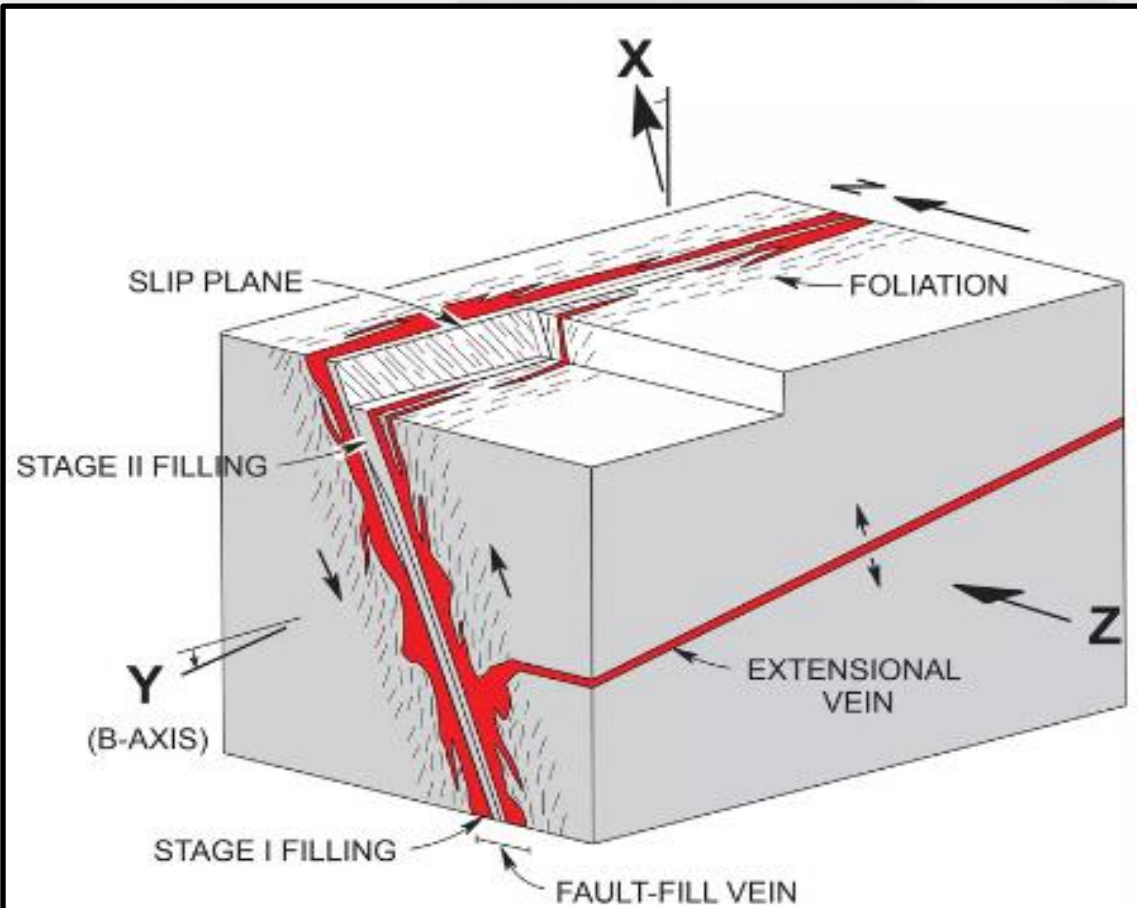
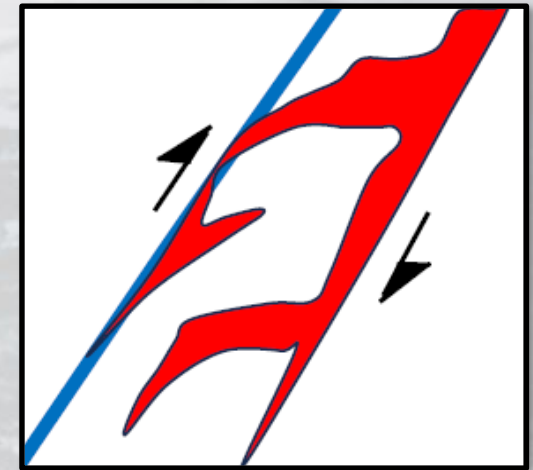


FIGURE 8. Schematic diagram illustrating the geometric relationships between the structural element of veins and shear zones and the deposit-scale strain axes (from Robert, 1990).



*Reliance Interpretation
at Eagle Zone
(Rhys 2024)*

Reliance Gold Project

Eagle Mineralized Breccia Textures

Gold - Arsenopyrite Quartz Breccia (Cataclastite) 6.19 gpt Gold over 0.85 m



**DDH22-027
@ 116.4m**

**on 027 Vein
Margin**

Gold - Aspy "Coxcomb" Quartz Breccia 14.35 gpt Au /2.0 m



**DDH22-031
@ 128 m**

Reliance Gold Project

Visible Gold in 2023 Drilling: DDH23-078

DDH23-078 **Visible gold** in “Coxcomb” Quartz Vein BX
9.67 gpt Gold / 1.2 m



Reliance Gold Project

DDH 21-020 – 15.7 gpt Gold over 24.8 m

MINERALIZED BRECCIA TEXTURES



@37 m
4.99 gpt Gold over 2.0 m



@49 m
27.5 gpt Gold /
2.1 m



@54 m
16.15 gpt Gold over 2.0 m

NQ Core



@58 m
15.55 gpt Gold over 0.7 m

Reliance Gold Project Royal Shear Geology & Cross Sections



REPORTED GOLD INTERCEPTS

5.00 gpt Gold / 9.8 m

2023 Diamond Drill Intercept

DRILLING BY ENDURANCE GOLD

- Diamond Drill Hole
 - Reverse Circulation (RC) Drill Hole
- Select drill traces shown Au = Gold

MINERALIZATION

- Surface Exposed Mineralization
- Mineralization Trend Projected from depth

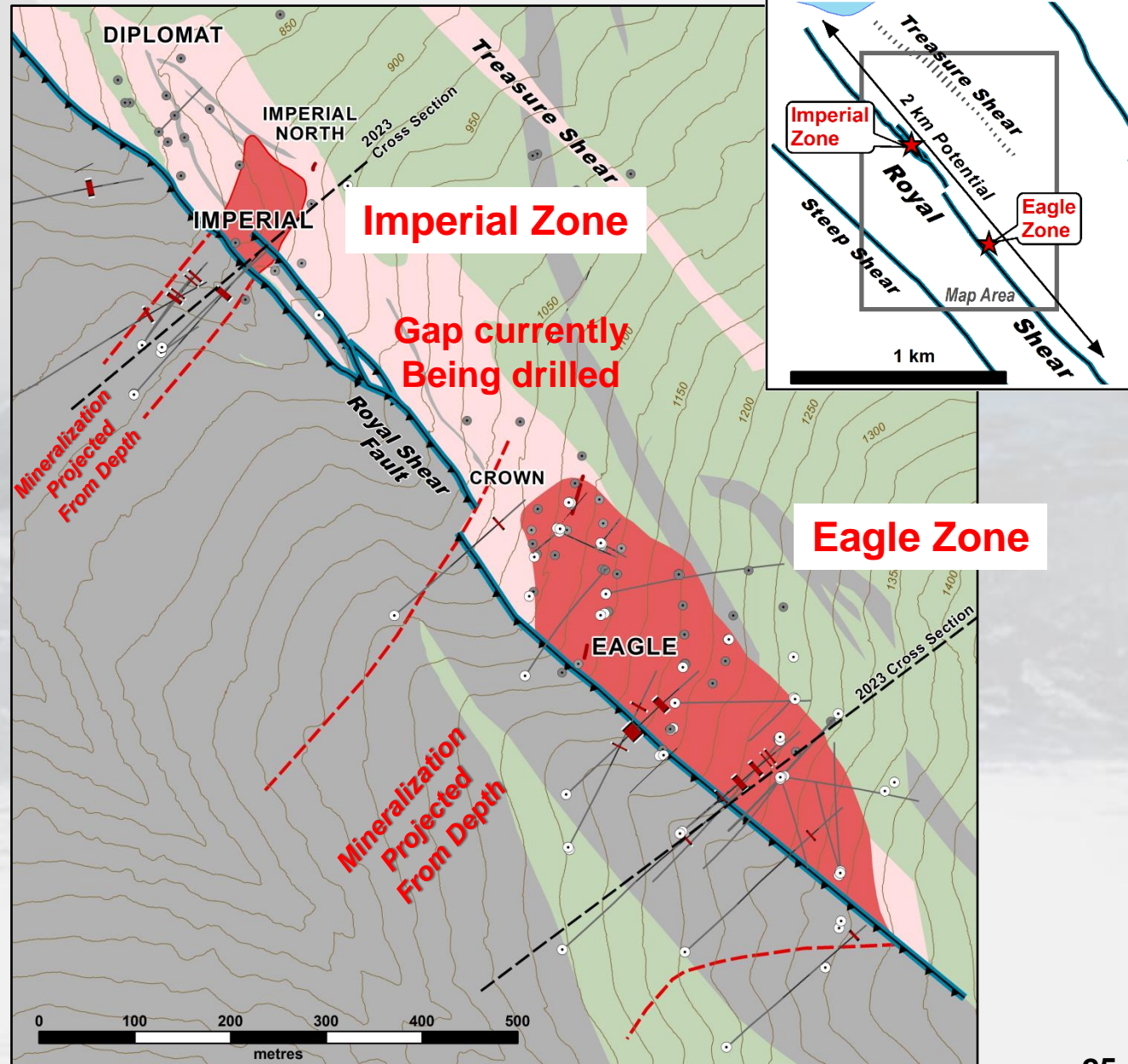
GEOLOGY

ALTERATION

- Ankerite Alteration +/- Quartz

ROCK TYPE

- Mafic Volcanic / Gabbro
- Argillite and Chert

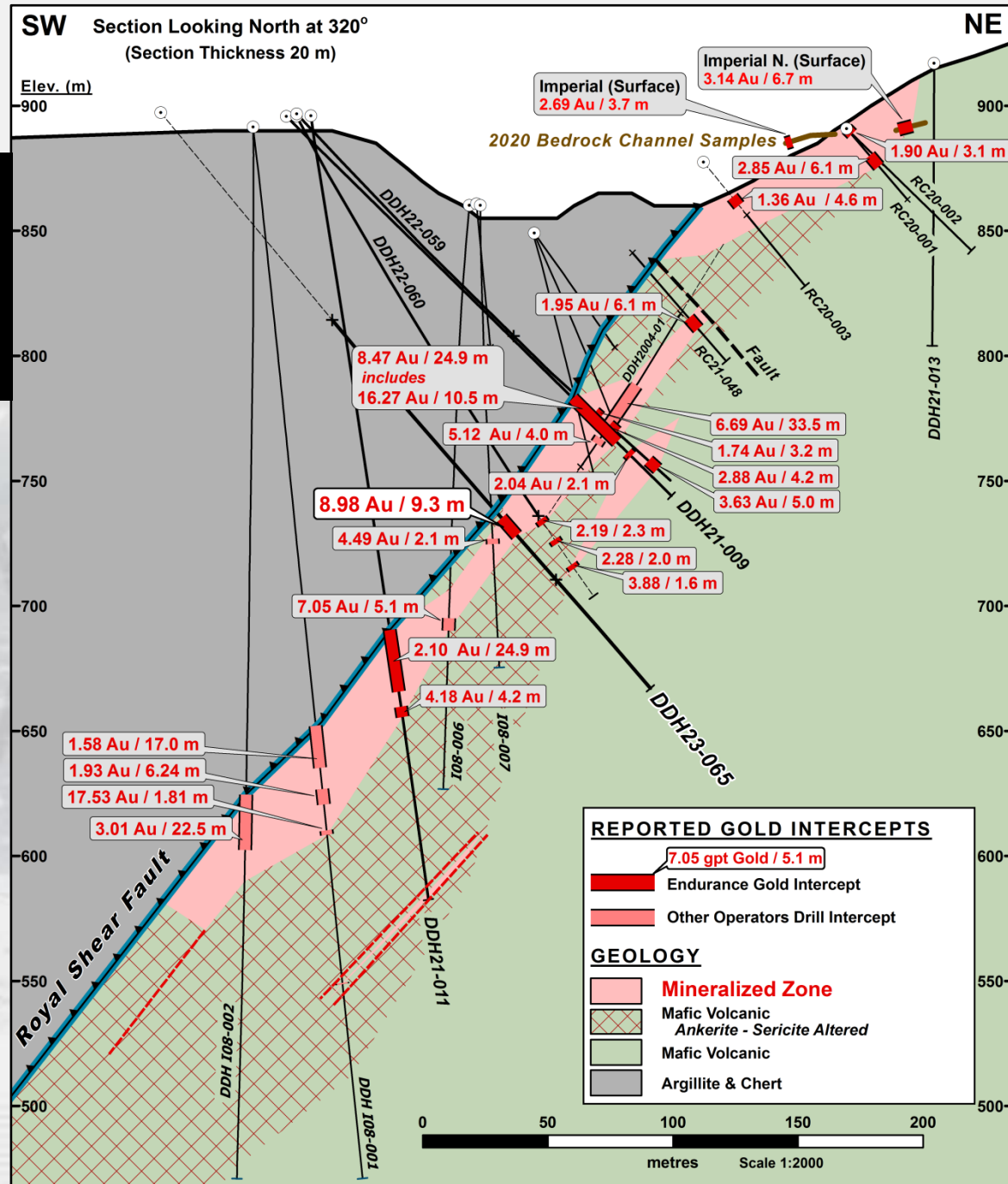


Reliance Gold Project Imperial Zone 2023 Drill Cross-Section DDH23-065

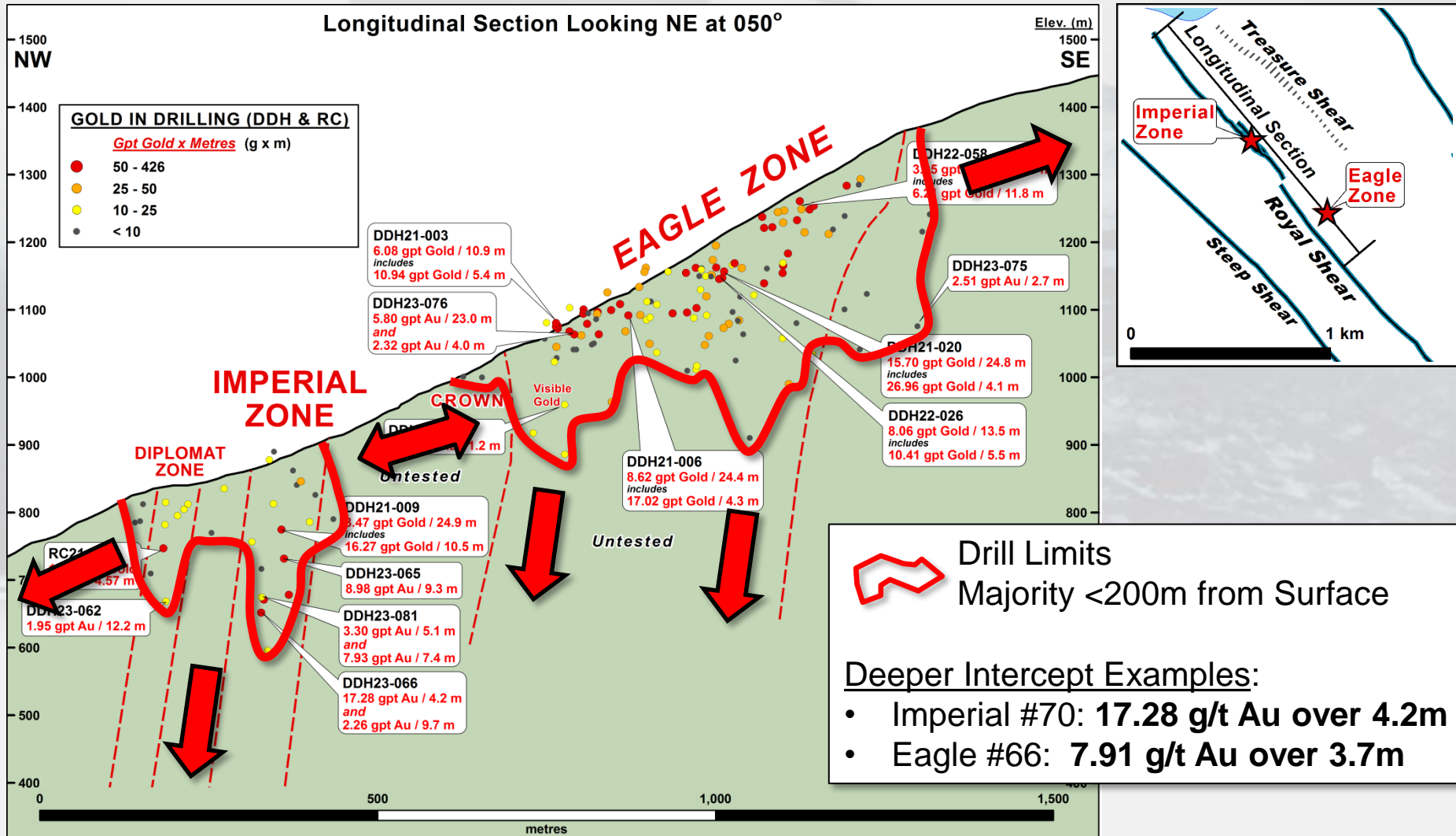
**Located
800 Metres Northwest
of the previous
Eagle cross-section**

**Significant Regional
Mineralized Structure**

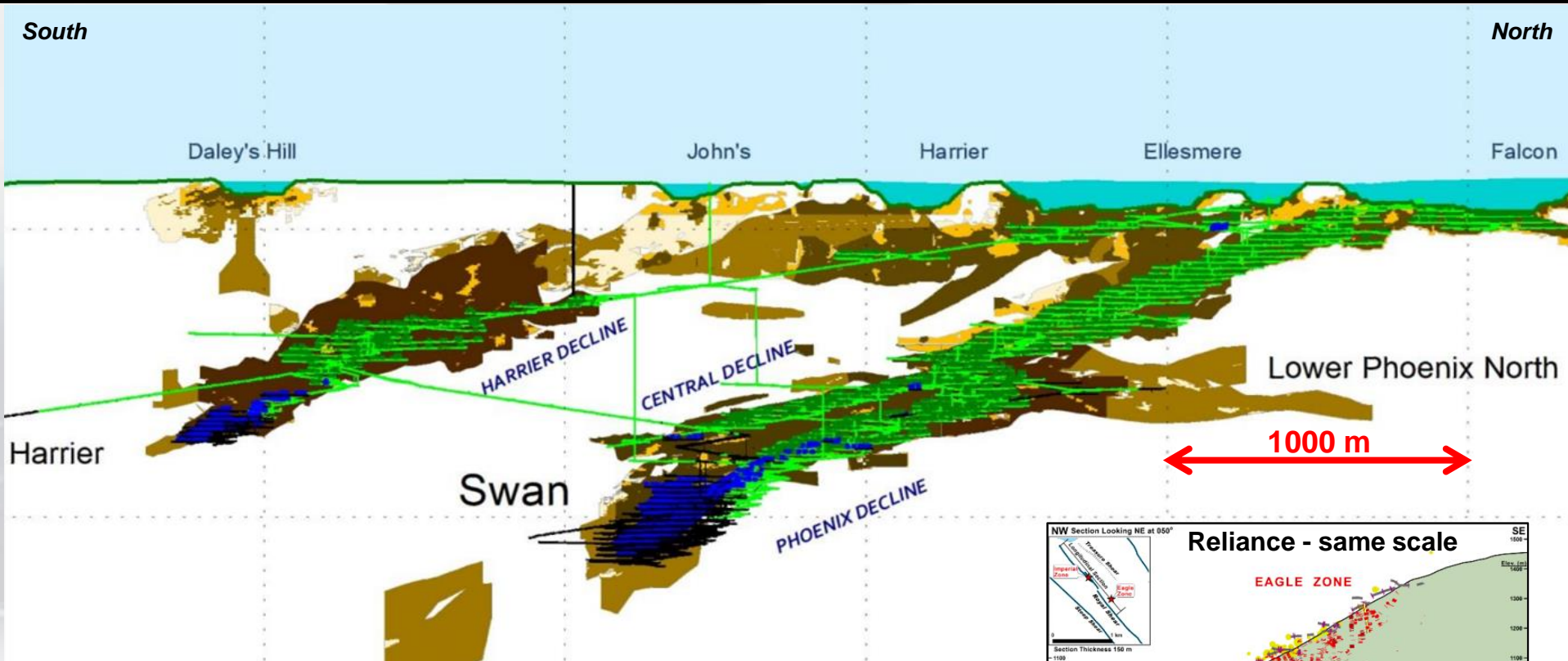
**Imperial Area open
at Depth and
along strike**



Reliance Gold Project Royal Shear Longitudinal Section

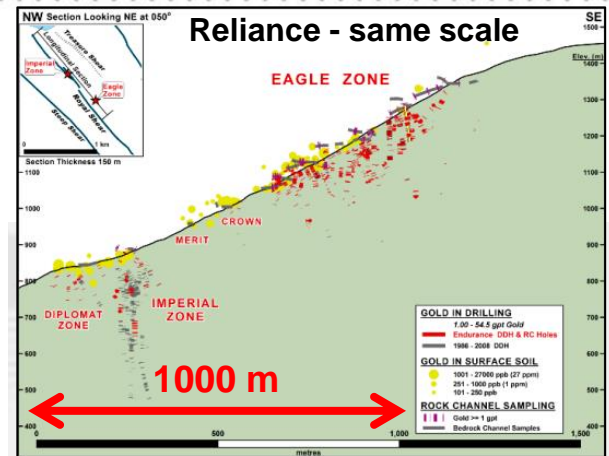


Reliance Gold Project Fosterville Analogy?

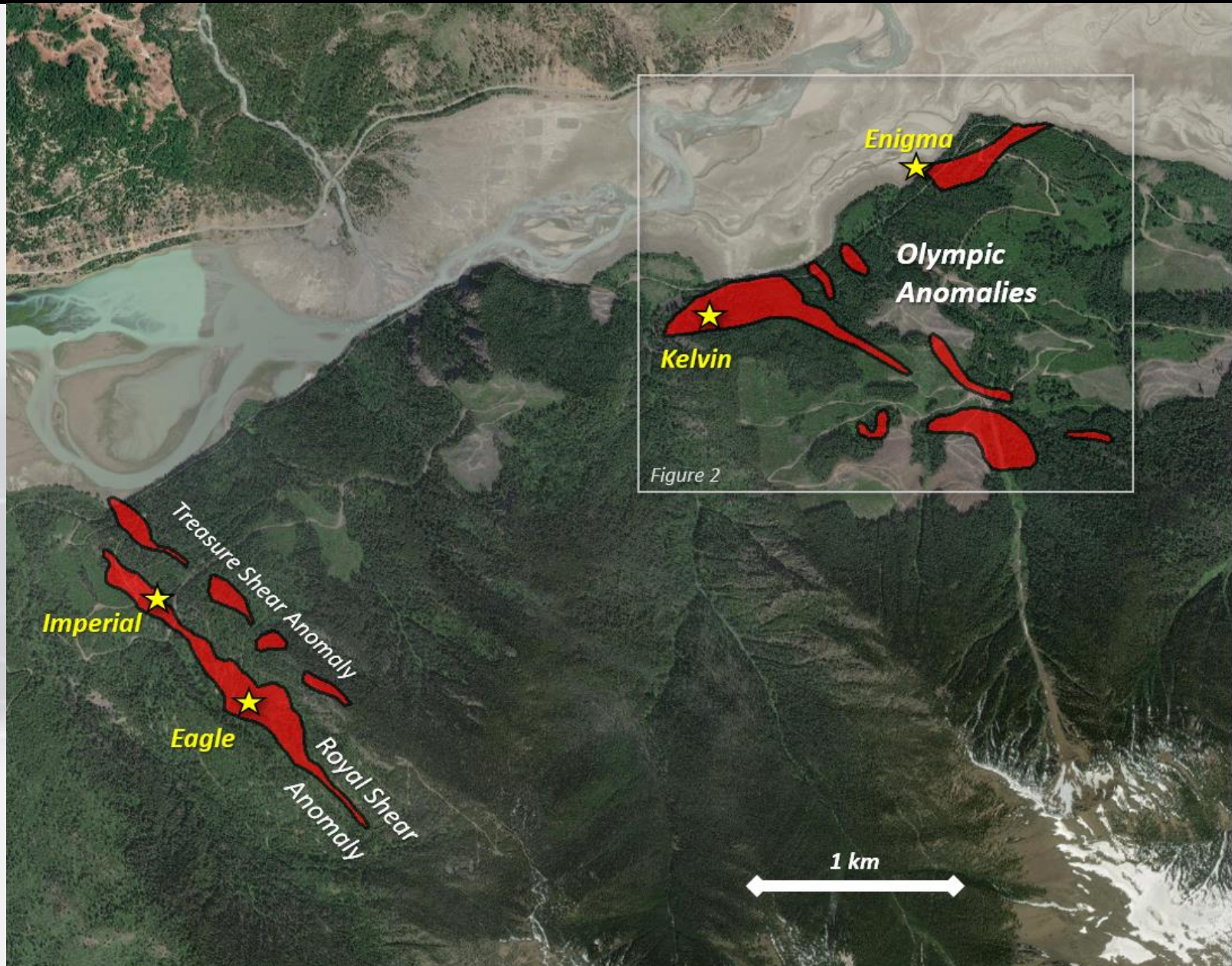


Fosterville gold mine was originally a low-grade heap leach open cut oxide operation with improving gold grades to depth (e.g. Swan zone – 2.34 moz @ 49.6 gpt Au) – resources currently defined to +1,300 m depth

Average vertical drill depth at Reliance is less than 70 m



Reliance Gold Project, B.C. Eagle, Imperial & the Olympic Geochemical Anomalies



Reliance Gold Project Olympic Claim Option - Enigma Showing

4.1 gpt Gold
6.78% Antimony



Enigma Vein Grab Sample with Stibnite Crystals

Reliance Gold Project, BC Active 2024 Program

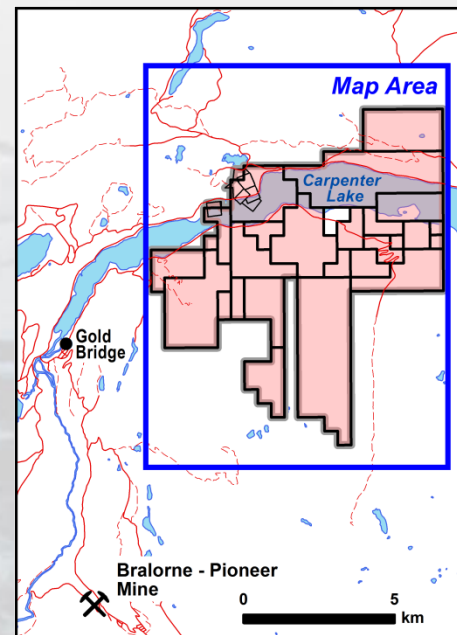
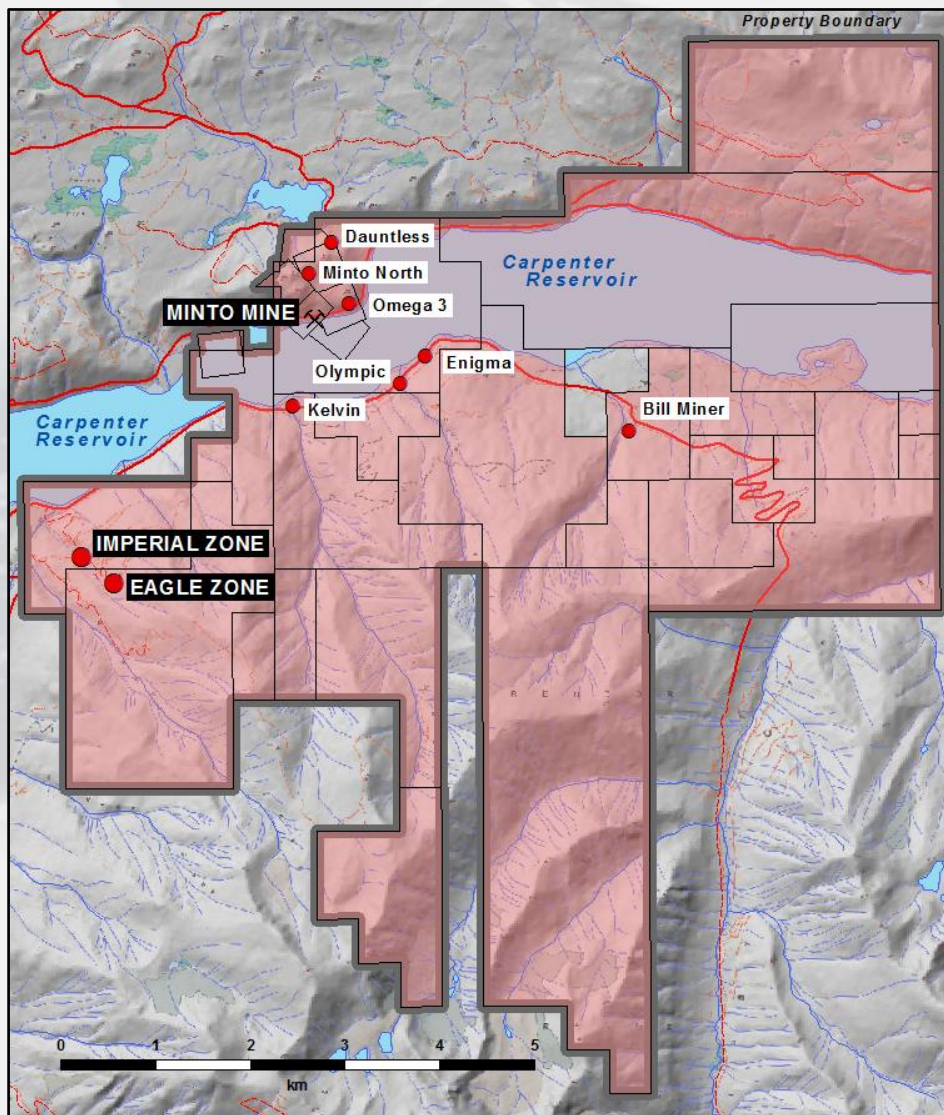
- At least 8,000 m of diamond drilling expected on the Royal Shear trend
- Geological, structural, mineralogical and metallurgical studies at Eagle and Imperial
- Revise 3D geological model in anticipation of an inaugural mineral resource estimate at Eagle and Imperial
- Geochemical surface sampling to open up trends and parallel structures
 - Develop drill-ready targets at Upper Eagle, Enigma, Olympic soil grids
- Community consultation:
 - Drill permit application in the Olympic Area
- Continue environmental baseline studies

Reliance Gold Project, BC Conclusions

- An outstanding New Exploration Discovery in an historically productive multi-million ounce Orogenic Gold Camp.
- Wide pervasive iron-carbonate sericite alteration, sulphidization, breccia, and antimony indicate an “Epizonal” Orogenic setting in a “brittle” structural regime – Epizonal comparables to Fosterville, Australia and recent Newfoundland discoveries.
- Model provides potential for a major gold system with depth continuity.
- RC & DDH Drilling has delivered a high percentage of significant and excellent intersections.
- New discovery at the **Eagle Zone** is now **550 m X 150 m** defined by over 70 RC and DDH – **Average 5.17 gpt Gold over average intersection width of 9.6 m** Open at depth and along strike. - **Gap between Eagle & Imperial closing**
- Wider 30 m wide shallow plunging mineralized trend confirmed at Imperial.
- New parallel mineralized trends developing as high priority drill targets

Reliance Gold Project Property Size Now 5,444 Hectares

Property
further
expanded in
February
2024



**> Five
Subparallel
Regional
Structures &
gold-antimony
prospects**

Reliance Gold Project, BC

Option Deal Terms to Earn 100%

Reliance Option Claims - prior to December 31, 2025:

1. C\$300,000 cash. (\$160,000 remaining)
2. 4 Million Endurance Shares. (2.0 Million remaining)
3. C\$3 Million in exploration expenditures. (complete)
4. 2.5% NSR with a buyout of 1.5% for C\$1 M

Olympic Option Claims - prior to December 31, 2024:

1. C\$100,000 cash. (\$45,000 remaining)
2. 1.5 Million Endurance Shares. (900,000 remaining)
3. C\$300,000 in exploration expenditures (complete)
4. 2.0% NSR with a total buyout for C\$1.75 M

Sanchez Option Claims - prior to December 31, 2025:

1. C\$10,000 cash. (complete)
2. 300,000 shares (200,000 remaining)
3. No expenditure requirements or retained NSR



www.endurancegold.com

Robert T. Boyd, P.Geo. is a qualified person as defined in National Instrument 43-101 and supervised the compilation of the information forming the basis for this summary. Any historic data summarized in this presentation should not be relied upon.

Suite 1212 – 666 Burrard Street
Vancouver, BC V6C 2X8 Canada
Toll Free Phone: 877-624-2237

EDG: TSX.V | ENGF: OTC Pink | Frankfurt: 3EG