



# **Reliance Gold Project Gold Bridge, B.C.**

**November 19, 2024**

## Corporate Disclosure

*The information contained herein, while obtained from sources which we believe are reliable, is not guaranteed as to its accuracy or completeness. The company is an exploration stage mineral resource exploration company and none of its mineral projects have yet to be proven to be economic. The contents of this presentation is for information purposes only and does not constitute an offer to sell or a solicitation to purchase any securities referred to herein.*

### **Forward-looking Statements**

*This presentation contains “forward-looking information” within the meaning of applicable Canadian securities regulations. All statements other than statements of historical fact herein, including, without limitation, statements regarding the company’s plans, goals or objectives and future exploration, development, potential mineralization, exploration results and future plans are forward-looking statements that involve various risks and uncertainties. There can be no assurance that such statements will prove to be accurate, and actual results and future events could differ materially from those anticipated in such statements. Readers are advised not to place an undue reliance on forward-looking statements.*

# Corporate Snapshot

<b>Shares Outstanding</b> <i>(Oct 30, 2024)</i>	173.2m
<b>Market Capitalization</b> <i>(C\$0.14 – Nov 18, 2024)</i>	C\$24.2 m
<b>Options</b> <i>(C\$0.20 – C\$0.34)</i>	10.0 m
<b>Warrants</b> <i>(C\$0.32 – C\$0.55)</i>	14.2 m
<b>Fully Diluted</b> <i>(Oct. 30, 2024)</i>	197.4 m
<b>Working Capital</b> <i>(September 30, 2024)</i>	C\$4.36 m*

\* includes marketable securities



**Insiders  
own  
over 60%**

## Key People

**Robert T. Boyd**  
*President, CEO & Director*

**Darren O'Brien**  
*Vice President Exploration*

**Teresa Cheng**  
*CFO & Corporate Secretary*

**Richard Gilliam**  
*Director*

**H. Ross Arnold**  
*Director*

**Robert Pease**  
*Director*

**J. Christopher Mitchell**  
*Director*

# Reliance Gold Project

## Bralorne Camp, Gold Bridge, B.C.

### New Surface Discovery

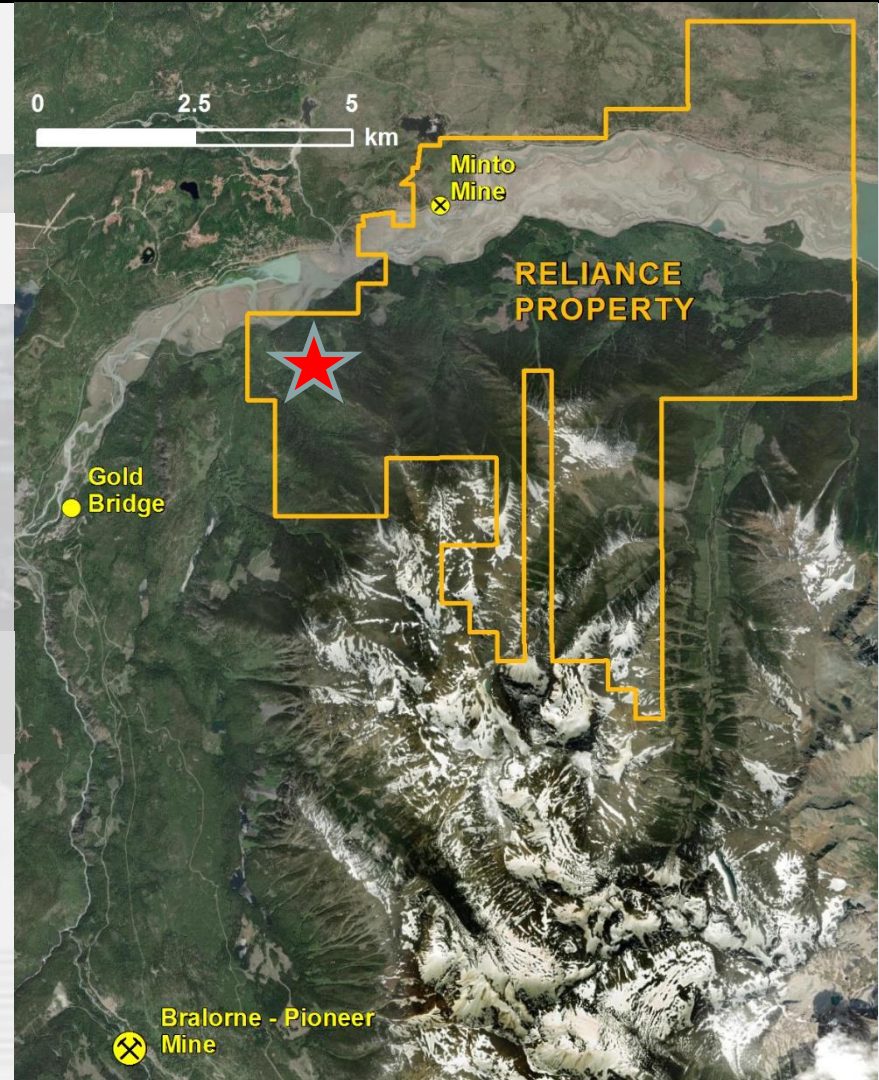
10 km from historic Bralorne Camp  
(+4 million ounces of historic production)



4 hour Drive  
from Vancouver



Imperial and  
Eagle Zones



## Reliance Gold Project, Gold Bridge, BC Program Activity Highlights 2020 to 2024

### “Discovery Stage” Gold Project in a productive gold camp.

- Early Exploration between 1985 and 2008 - limited focus over about 100 m - Never systematically explored
- Progress since 2020 – Systematically Expanded potential to 2 km.
- 2020 to 2022 – Surface channel sampling - **Excellent Surface Results**
- 2020, 2021 & 2022 - Reverse Circulation (‘RC’) drilling - **84 RC holes**
- 2021 to 2024 - **108 Diamond Drill Holes** at Eagle & Imperial Zones
- **Excellent drilling Results statistics – Results Pending on 11 DDH**
- Highlights:
  - **Eagle Discovered & Expanded to 550 m strike & 9 m width**
  - **Deep +30 m wide Imperial Zone Discovered**
  - **Upper and Lower Crown Zones Discovered**

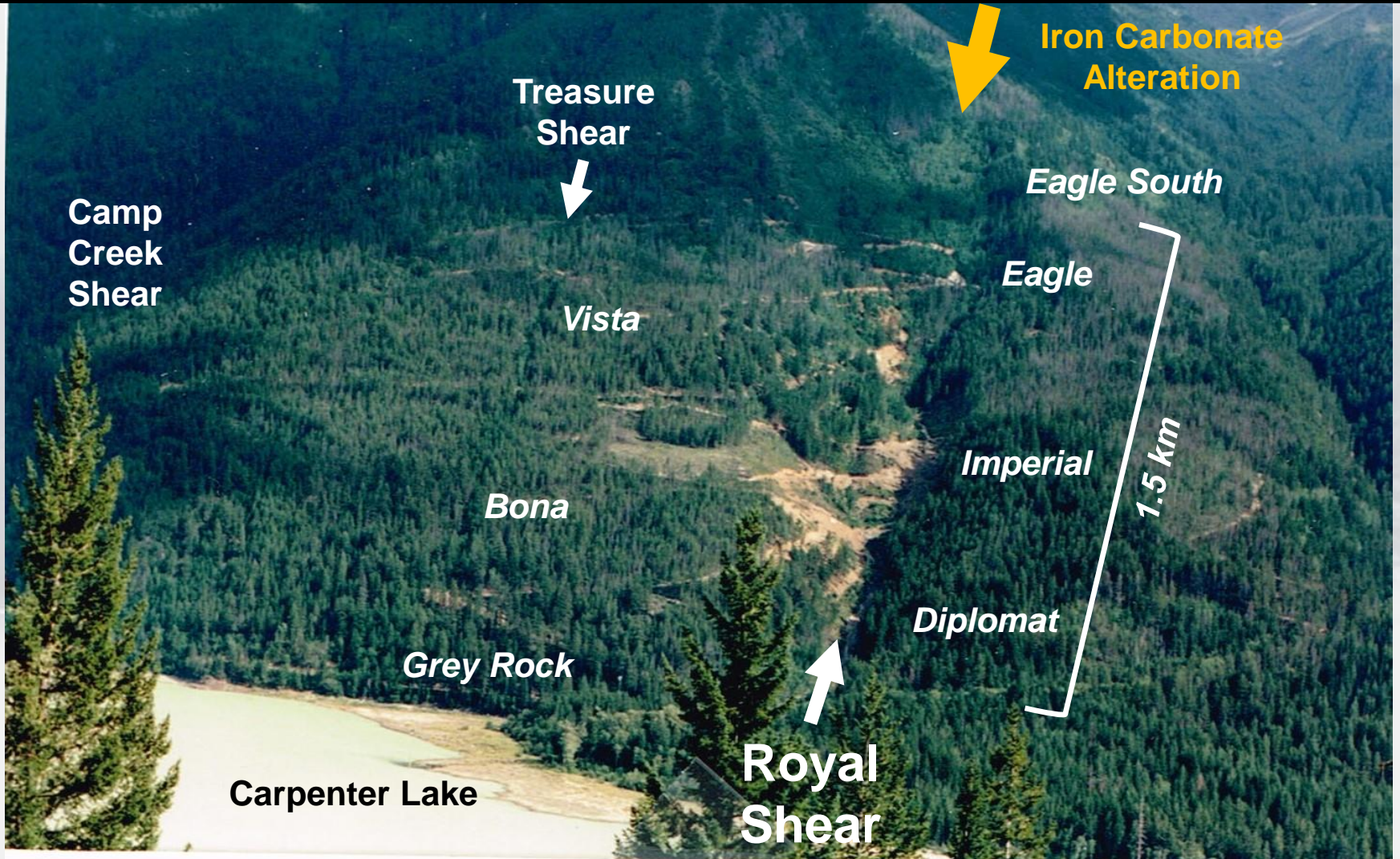
# Reliance Gold Project, B.C.

## Best Diamond Drill Holes 2021 to 2023

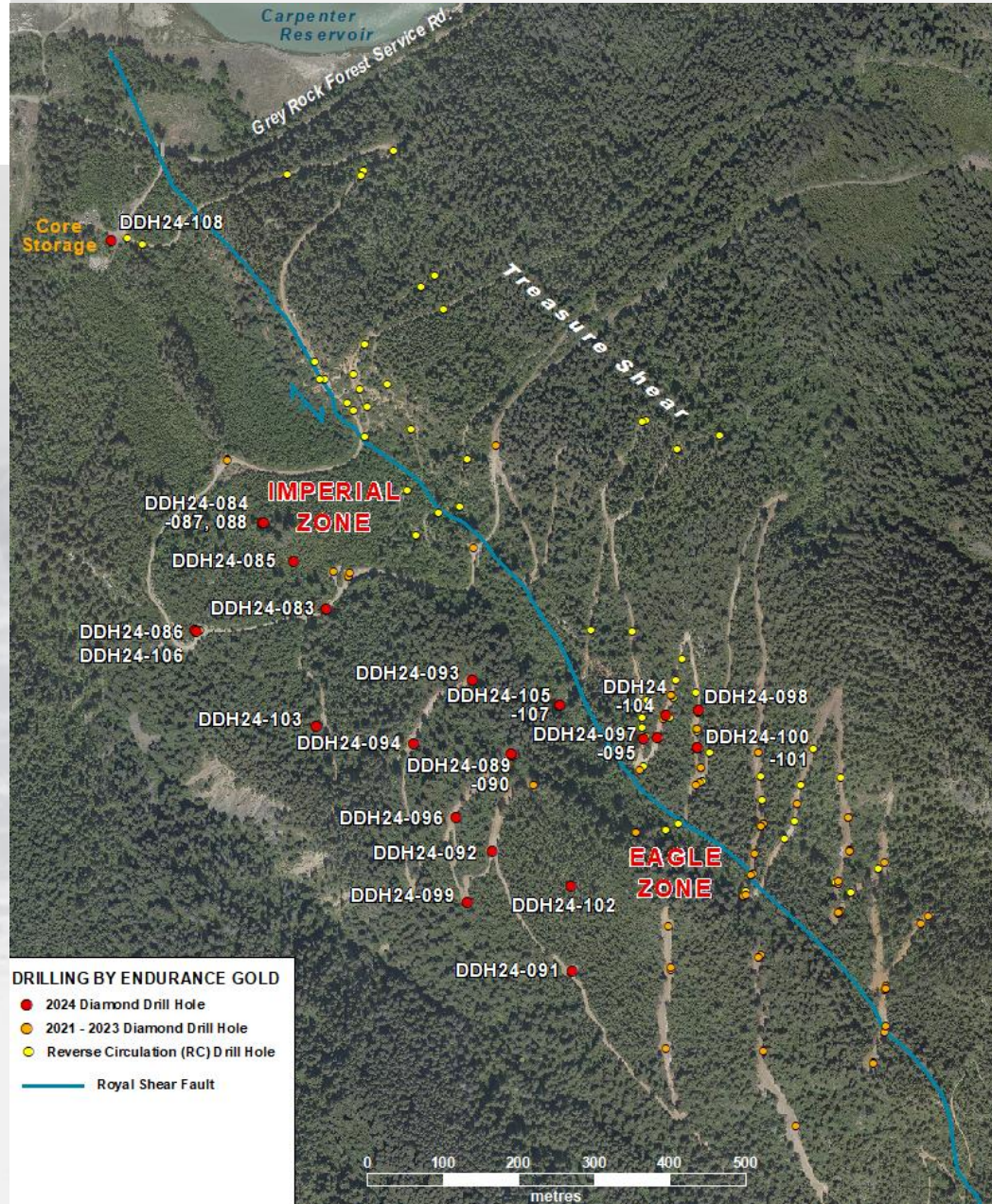
<u>Zone &amp; DDH</u>	<u>From</u>	<u>g/t X m</u>	<u>Au g/t / Metre</u>
Eagle - 22-058	32.1	426	3.05 gpt / 139.9m
Eagle - 21-020	33.3	389	15.70 gpt / 24.8m
Imperial - 21-009	161.0	210	8.47 gpt / 24.9m
Eagle - 21-006	25.6	210	8.62 gpt / 24.4m
Eagle - 23-076	9.3	133	5.80 gpt / 23.0m
Eagle - 22-027	109.2	124	4.16 gpt / 30.0m
Eagle - 22-026	80.4	108	8.06 gpt / 13.5m
Eagle - 22-024	27.0	100	8.41 gpt / 12.0m
Eagle - 22-036	35.4	97	7.65 gpt / 12.7m
Eagle - 22-031	124.9	90	7.58 gpt / 11.9m
Eagle - 22-045	35.1	84	7.31 gpt / 11.6m
Eagle - 21-004	1.0	84	4.44 gpt / 19.0m
Imperial - 23-065	212.8	83	8.98 gpt / 9.3m
Eagle - 22-028	97.0	82	2.59 gpt / 31.6m
Imperial - 23-066	306.5	72	17.28 gpt / 4.2m

**+2024 = 74.29 gpt / 2.0m**

# Reliance Gold Project Bralorne Camp, Gold Bridge B.C.

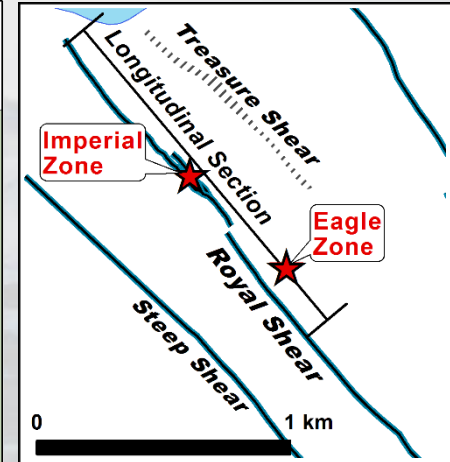
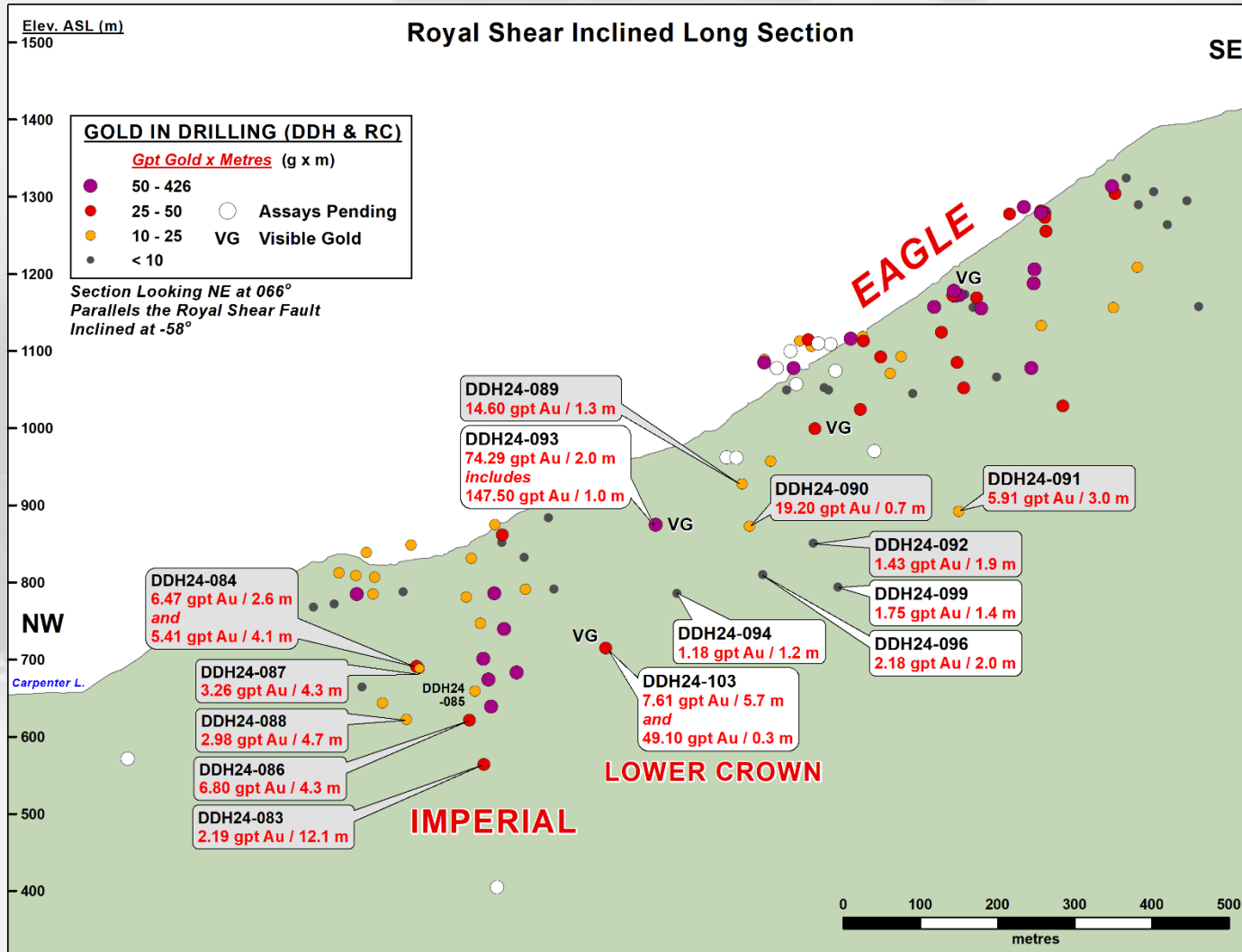


# Reliance Gold Project 2024 Drill Hole Locations



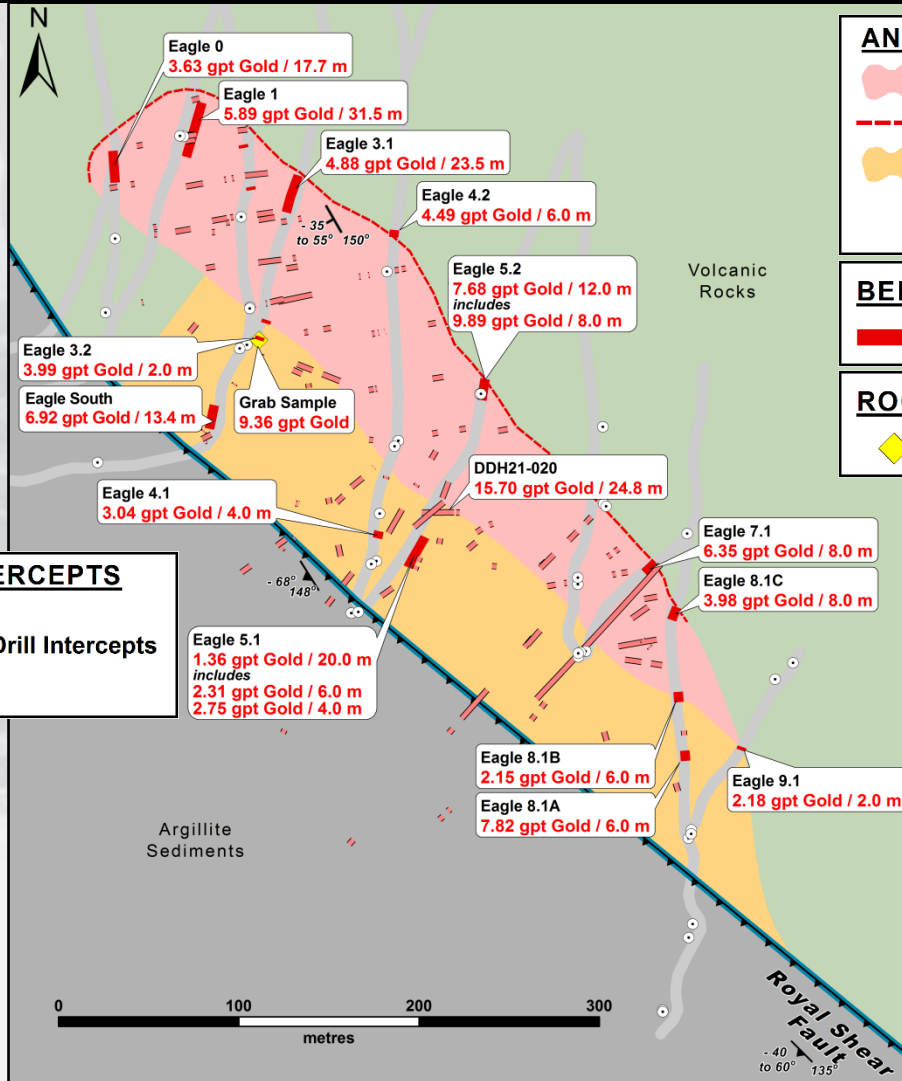
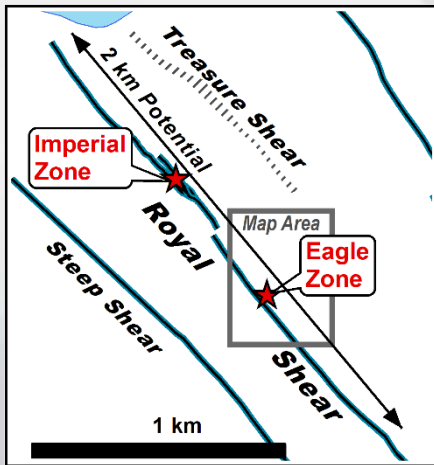


# Reliance Gold Project Royal Shear Inclined Long Section – 2024 Update



# Reliance Gold Project

## Bedrock Channel Samples Eagle Zone




**ANOMALIES & MINERALIZATION**

-  **Eagle Zone**
-  **Eagle Zone Surface Exposure**
-  **Eagle South Feeder Zone**  
*Intense brittle-ductile deformation  
Strong pervasive ankerite-sericite alteration  
Multiple brecciated quartz veins*



**BEDROCK CHANNEL SAMPLING**

-  **Channel Sample Gold Intercept**

**ROCK GRAB SAMPLING**

-  **2022 Rock Grab Sample**

**DRILLING REPORTED GOLD INTERCEPTS**  
*Projected Vertically to Surface*

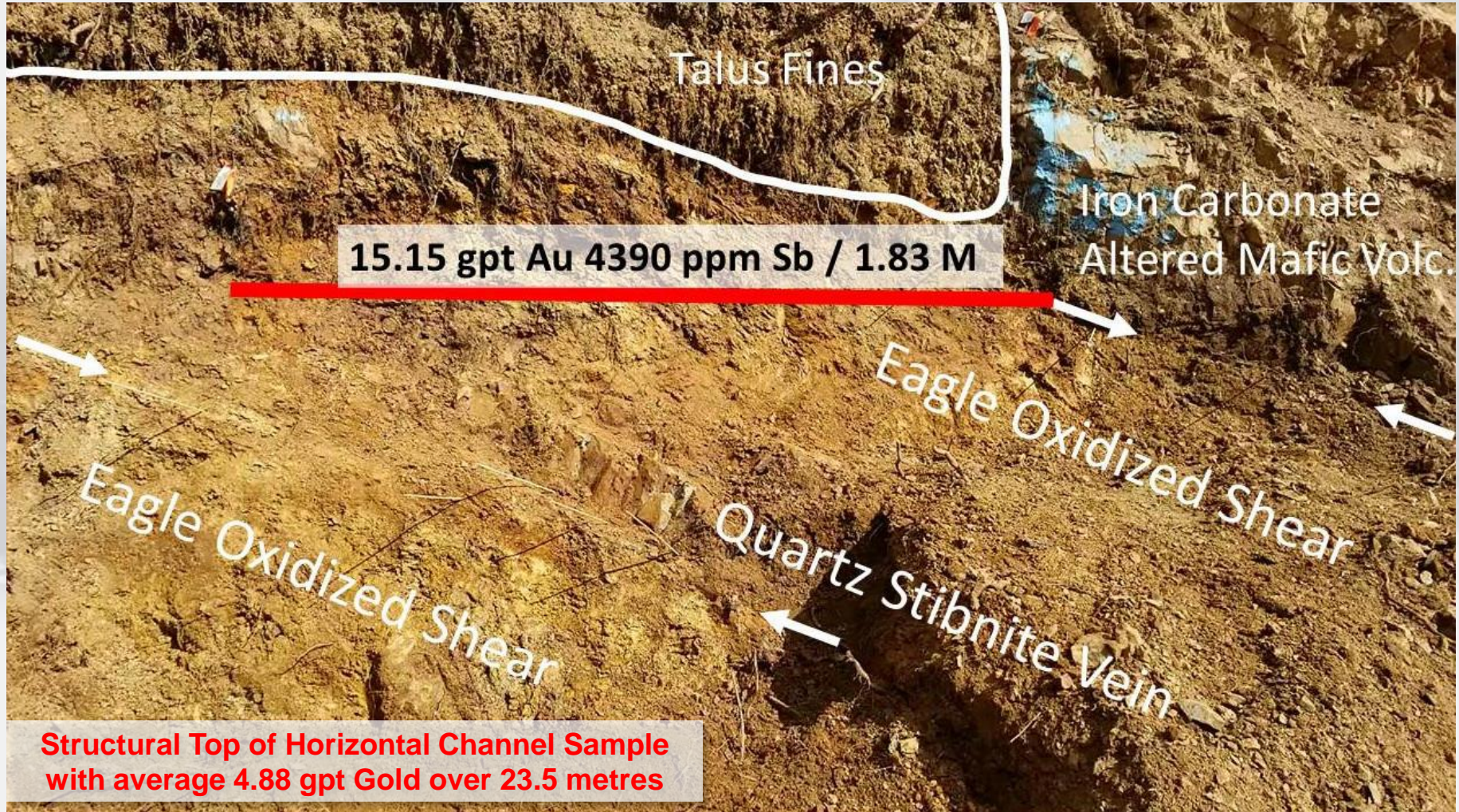
-  **2020-2022 Reported DDH & RC Drill Intercepts**
-  **Diamond Drill Hole Location**

**Eagle Channel Samples indicate 550 m of strike trend**

Sample ID	Gold Grade (gpt)	Intercept Length (m)
Eagle 0	3.63	17.7
Eagle 1	5.89	31.5
Eagle 3.1	4.88	23.5
Eagle 4.2	4.49	6.0
Eagle 5.2	7.68	12.0
includes		9.89 gpt Gold / 8.0 m
Eagle 3.2	3.99	2.0
Eagle South	6.92	13.4
Grab Sample	9.36	
Eagle 4.1	3.04	4.0
DDH21-020	15.70	24.8
Eagle 7.1	6.35	8.0
Eagle 8.1C	3.98	8.0
Eagle 5.1	1.36	20.0
includes		2.31 gpt Gold / 6.0 m
		2.75 gpt Gold / 4.0 m
Eagle 8.1B	2.15	6.0
Eagle 8.1A	7.82	6.0
Eagle 9.1	2.18	2.0

# Reliance Gold Project

## Eagle Zone at Eagle 3 Road – West Dipping Shear Zone



## Reliance Gold Project, BC – 2020, 2021 & 2022 RC Drilling

- Completed **84 RC Drill Holes** in 2020, 2021 and spring 2022.
- Excellent results statistics in RC - **40 of 84 RC holes returned > 10 gram\*m**
- Most of the Best RC holes in the **EAGLE Area** - with some excellent results:
  - **14.08 gpt Gold over 15.24 m**
  - **8.57 gpt Gold over 10.66 m**
- **IMPERIAL Zone** – Up plunge Intersection - **7.23 gpt Gold over 4.6 m**
- **DIPLOMAT Zone** - **16.49 gpt Gold over 4.57 m**

## Reliance Gold Project, BC – 2021 to 2024 DDH Statistics

1. Completed **97 Diamond** Drill Holes between 2021 to 2024 (with Assays)
2. Majority of Drill holes at the **Eagle Area – SIGNIFICANT DISCOVERY**
  - 15.7 gpt Gold over 24.8 m including 26.96 gpt Gold over 4.1 m
  - 8.62 gpt Gold over 24.4 m including 17.02 gpt Gold over 4.3 m
  - 8.41 gpt Gold over 12.0 m, 8.05 gpt Gold over 13.0 m.
  - 3.05 gpt Gold / 139.9 m, 4.16 gpt Gold / 30.0 m, 5.8 gpt Gold / 23 m
3. 17 Diamond Drill holes at the **Imperial Zone** – majority mineralized
  - 8.47 gpt Gold over 24.9 m including 16.27 gpt Gold over 10.5 m
  - 8.98 gpt Gold over 9.3 m including 12.44 gpt Gold over 6.0 m
  - 17.28 gpt Gold over 4.2 m including 35.20 gpt Gold over 1.3 m
4. **62 of 97 DDH** have significant intersections exceeding 10 gram X metre
5. **16 of 97 DDH** have excellent drill intersections  
(72 to 426 gram X metre)

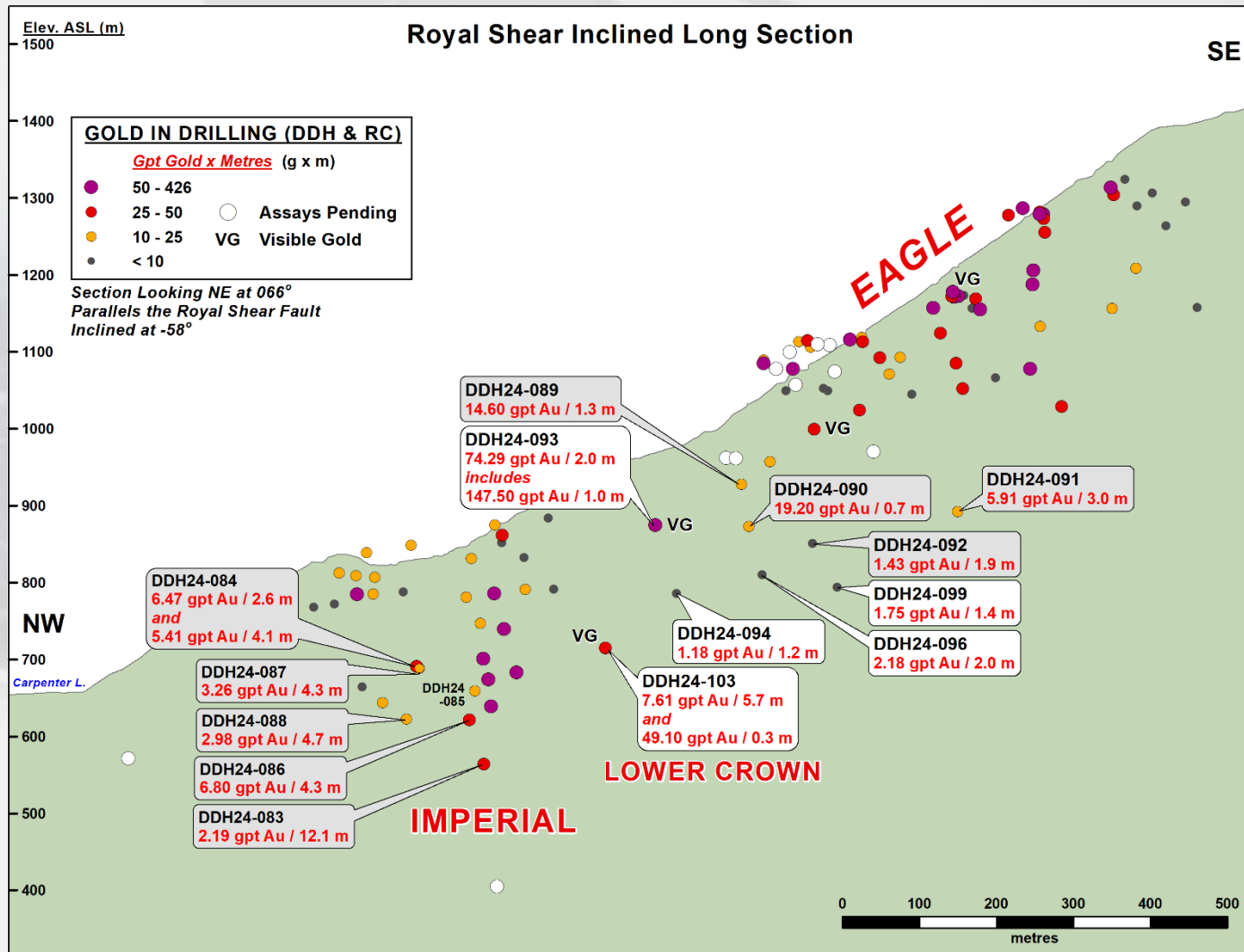
# Reliance Gold Project, B.C.

## Best Diamond Drill Holes 2021 to 2023

<u>Zone &amp; DDH</u>	<u>From</u>	<u>g/t X m</u>	<u>Au g/t / Metre</u>
Eagle - 22-058	32.1	426	3.05 gpt / 139.9m
Eagle - 21-020	33.3	389	15.70 gpt / 24.8m
Imperial - 21-009	161.0	210	8.47 gpt / 24.9m
Eagle - 21-006	25.6	210	8.62 gpt / 24.4m
Eagle - 23-076	9.3	133	5.80 gpt / 23.0m
Eagle - 22-027	109.2	124	4.16 gpt / 30.0m
Eagle - 22-026	80.4	108	8.06 gpt / 13.5m
Eagle - 22-024	27.0	100	8.41 gpt / 12.0m
Eagle - 22-036	35.4	97	7.65 gpt / 12.7m
Eagle - 22-031	124.9	90	7.58 gpt / 11.9m
Eagle - 22-045	35.1	84	7.31 gpt / 11.6m
Eagle - 21-004	1.0	84	4.44 gpt / 19.0m
Imperial - 23-065	212.8	83	8.98 gpt / 9.3m
Eagle - 22-028	97.0	82	2.59 gpt / 31.6m
Imperial - 23-066	306.5	72	17.28 gpt / 4.2m

**+2024 = 74.29 gpt / 2.0m**

# Reliance Gold Project Royal Shear Longitudinal Section – 2024 Update



## Reliance Gold Project Upper Crown Discovery in DDH24-093

NQ Core **Visible gold** in Quartz Vein – **147.5 gpt gold / 1.0 m**





# Reliance Gold Project Royal Shear Geology & Cross Sections



## REPORTED GOLD INTERCEPTS

5.00 gpt Gold / 9.8 m

2023 Diamond Drill Intercept

## DRILLING BY ENDURANCE GOLD

- Diamond Drill Hole
  - Reverse Circulation (RC) Drill Hole
- Select drill traces shown Au = Gold

## MINERALIZATION

- Surface Exposed Mineralization
- Mineralization Trend Projected from depth

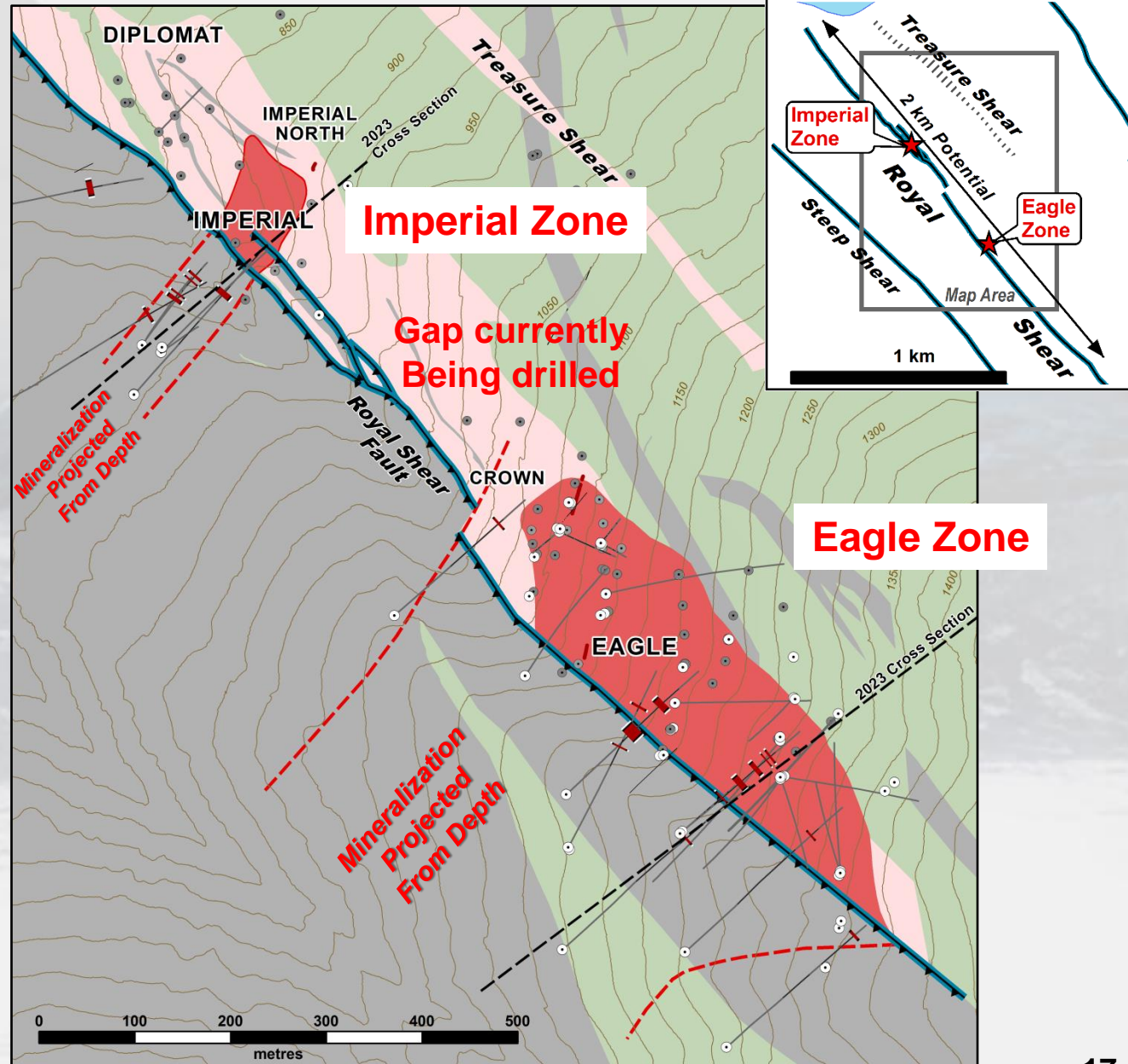
## GEOLOGY

### ALTERATION

- Ankerite Alteration +/- Quartz

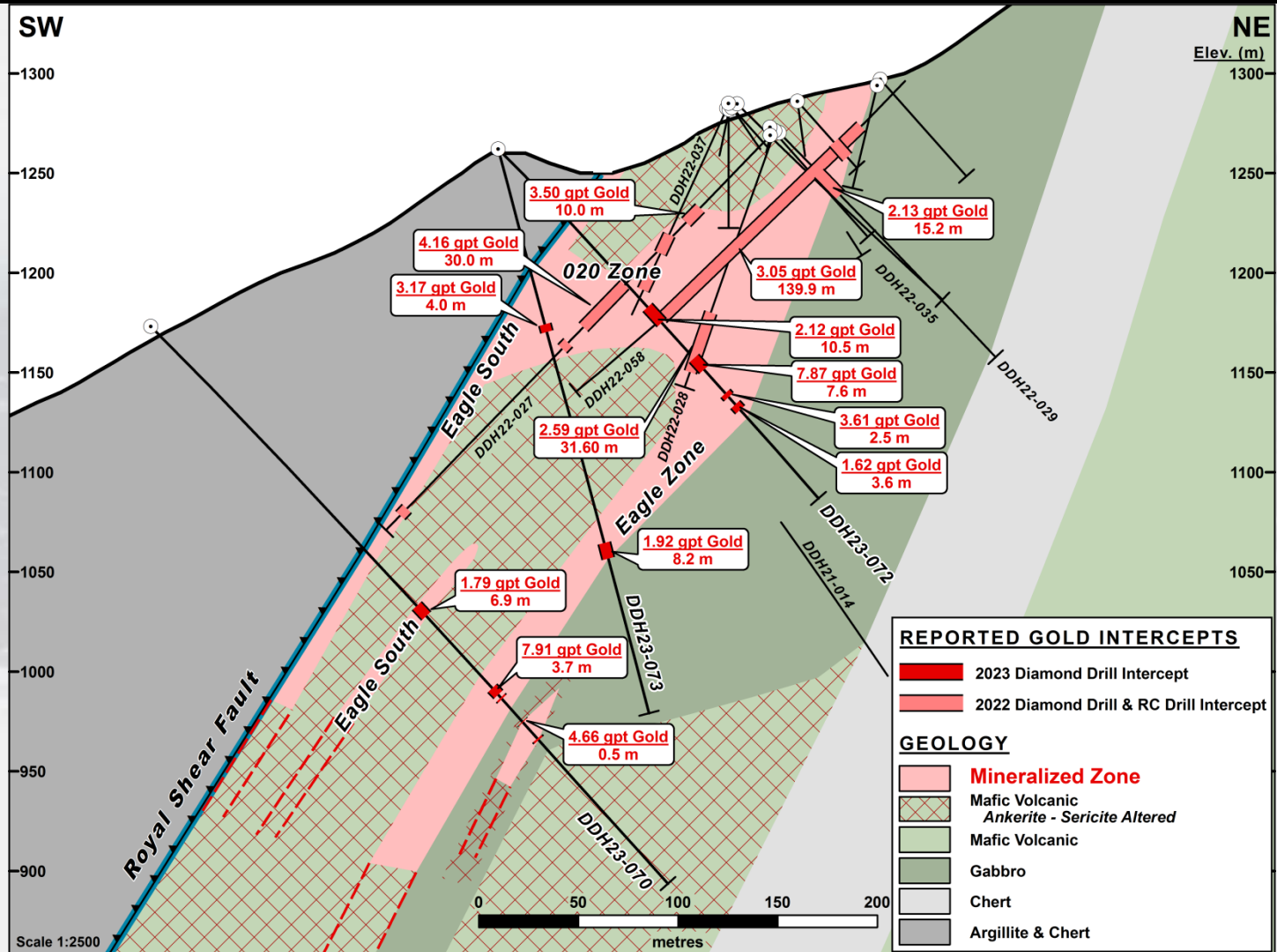
### ROCK TYPE

- Mafic Volcanic / Gabbro
- Argillite and Chert



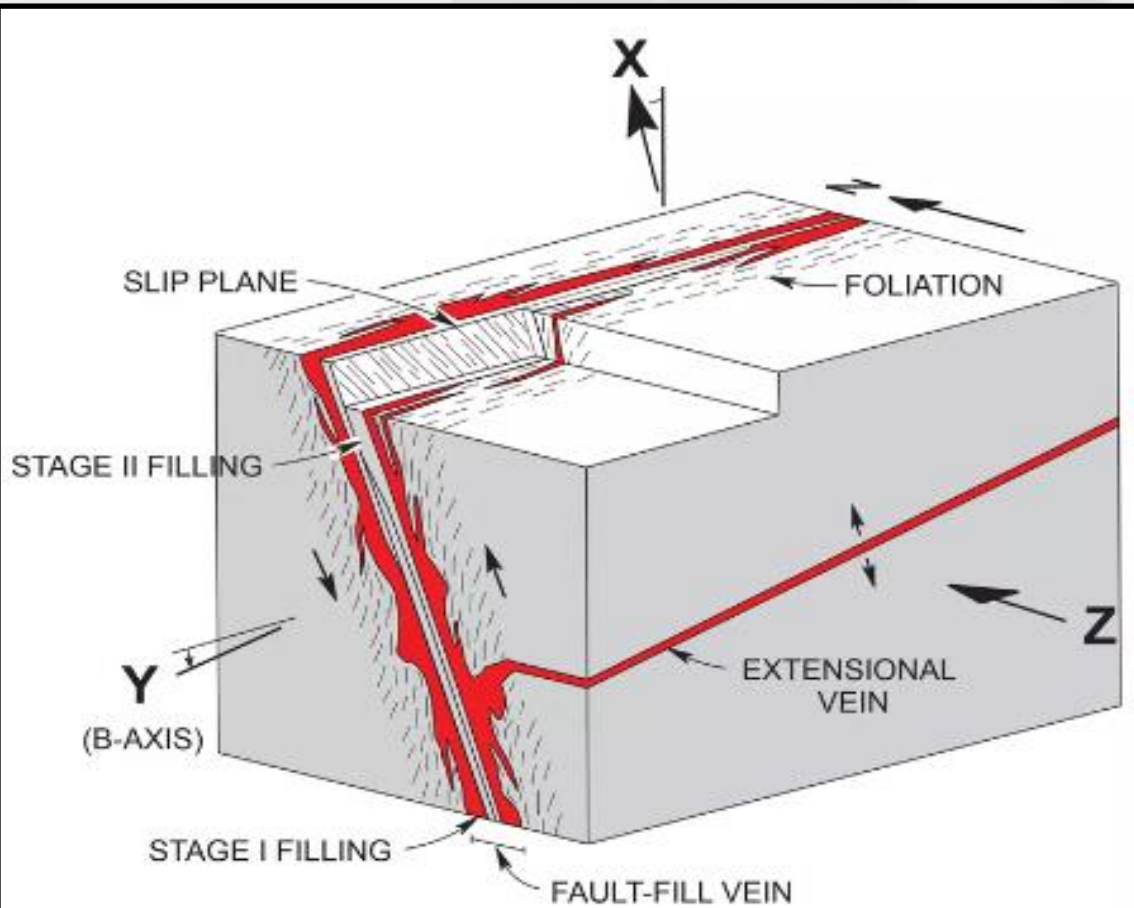
# Reliance Gold Project

## Eagle Cross Section DDH23-070, -072, -073

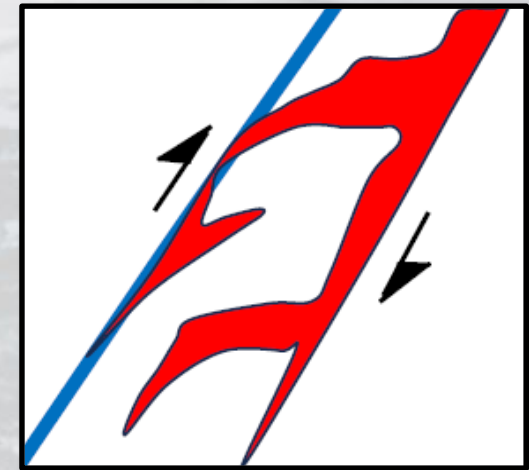


# Reliance Gold Project

## Eagle to Imperial Structural Model



**FIGURE 8.** Schematic diagram illustrating the geometric relationships between the structural element of veins and shear zones and the deposit-scale strain axes (from Robert, 1990).



*Reliance Interpretation  
at Eagle Zone  
(Rhys 2024)*

# Reliance Gold Project

## Eagle Mineralized Breccia Textures

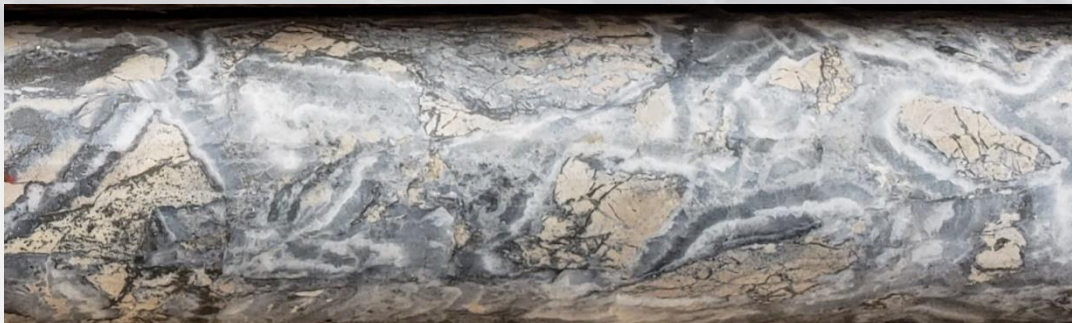
**Gold - Arsenopyrite Quartz Breccia (Cataclastite) 6.19 gpt Gold over 0.85 m**



**DDH22-027  
@ 116.4m**

**on 027 Vein  
Margin**

**Gold - Aspy "Coxcomb" Quartz Breccia 14.35 gpt Au /2.0 m**



**DDH22-031  
@ 128 m**

## Reliance Gold Project

### Visible Gold in 2023 Drilling: DDH23-078

**DDH23-078 Visible gold in “Coxcomb” Quartz Vein BX  
9.67 gpt Gold / 1.2 m**



# Reliance Gold Project

## DDH 21-020 – 15.7 gpt Gold over 24.8 m

### MINERALIZED BRECCIA TEXTURES



**@37 m**  
4.99 gpt Gold over 2.0 m



**@49 m**  
27.5 gpt Gold /  
2.1 m



**@54 m**  
16.15 gpt Gold over 2.0 m

**NQ Core**



**@58 m**  
15.55 gpt Gold over 0.7 m

# Reliance Gold Project Royal Shear Geology & Cross Sections



## REPORTED GOLD INTERCEPTS

5.00 gpt Gold / 9.8 m

2023 Diamond Drill Intercept

## DRILLING BY ENDURANCE GOLD

- Diamond Drill Hole
  - Reverse Circulation (RC) Drill Hole
- Select drill traces shown Au = Gold

## MINERALIZATION

- Surface Exposed Mineralization
- Mineralization Trend Projected from depth

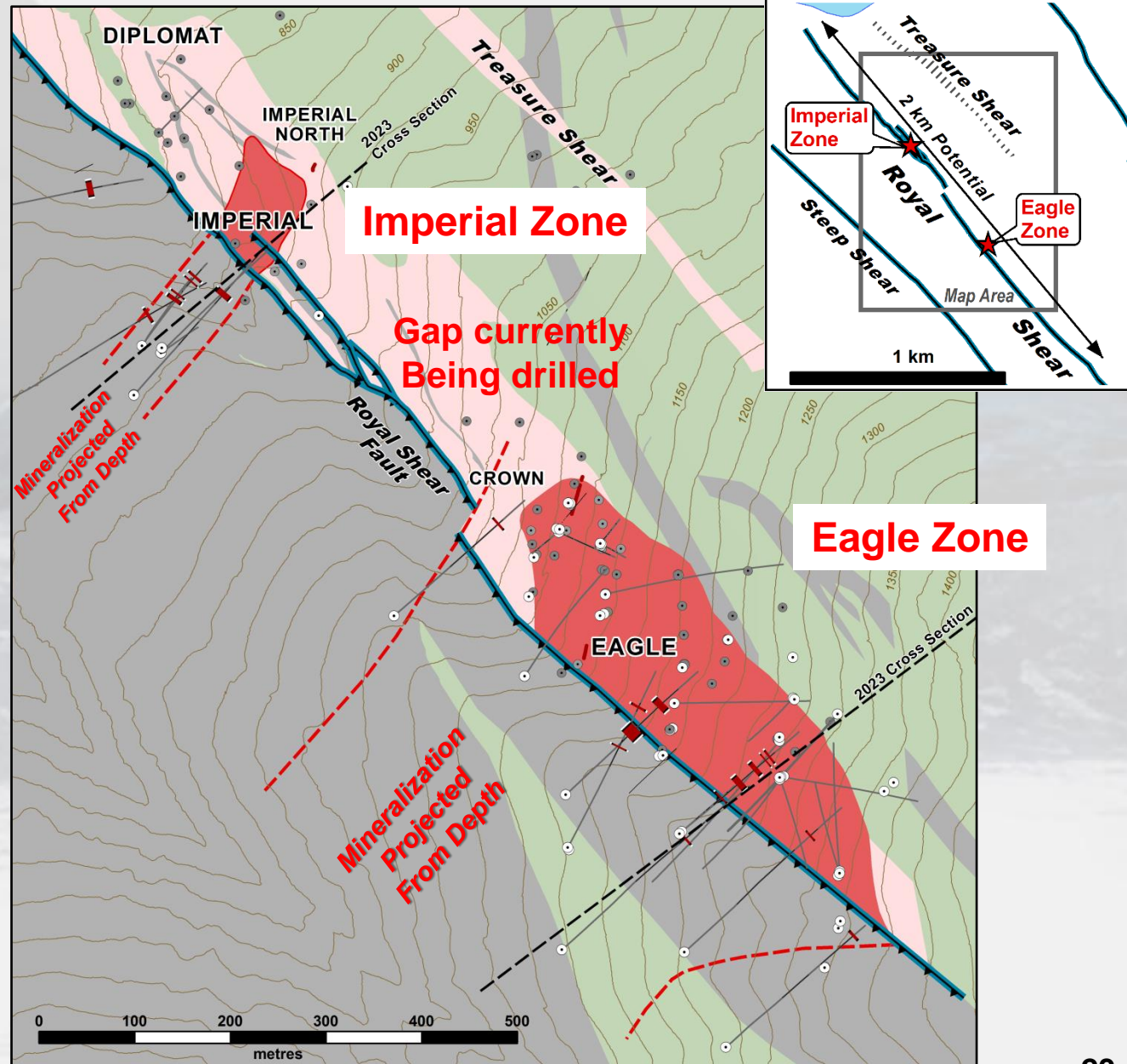
## GEOLOGY

### ALTERATION

- Ankerite Alteration +/- Quartz

### ROCK TYPE

- Mafic Volcanic / Gabbro
- Argillite and Chert

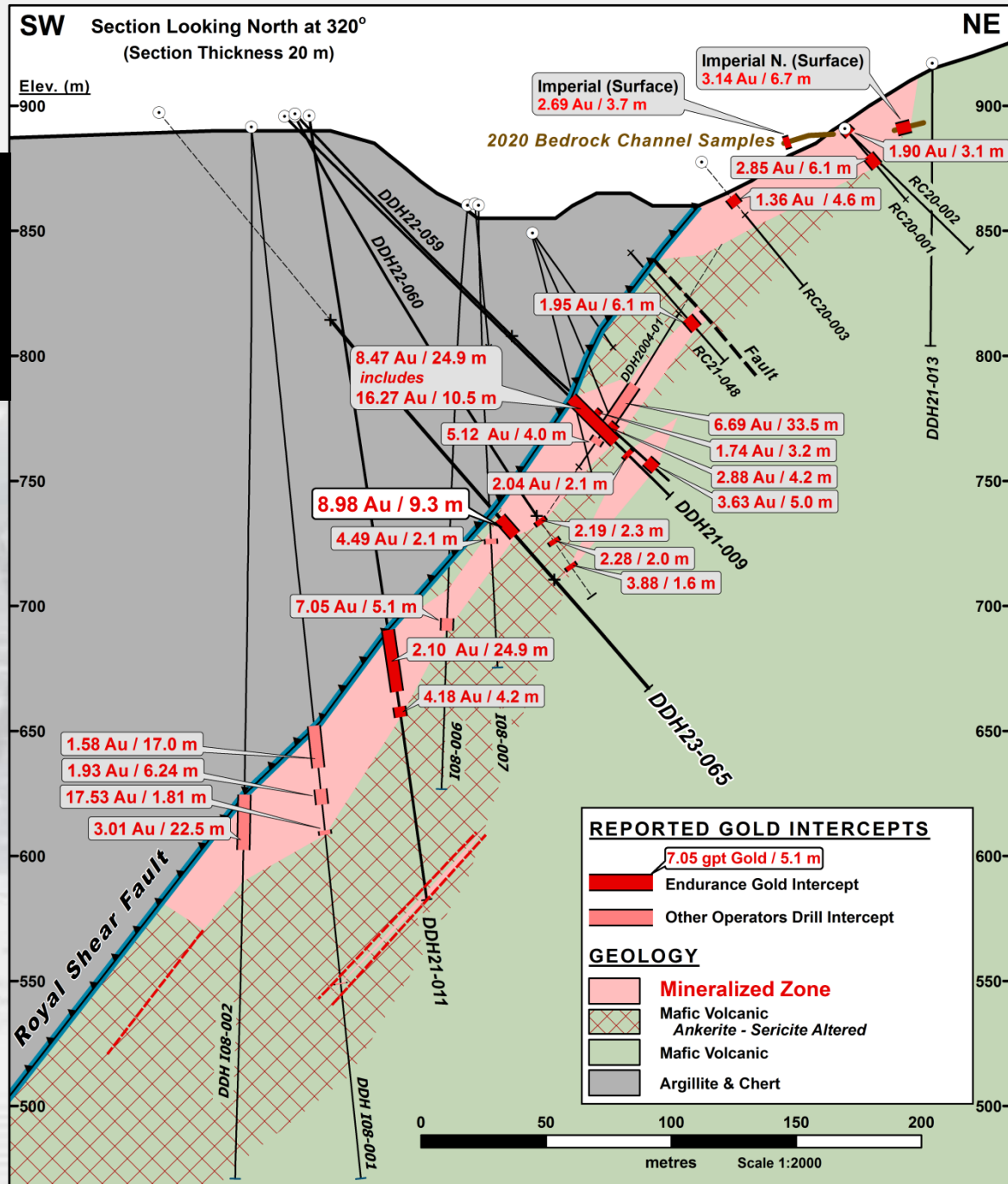


# Reliance Gold Project Imperial Zone 2023 Drill Cross-Section DDH23-065

Located  
800 Metres Northwest  
of the previous  
Eagle cross-section

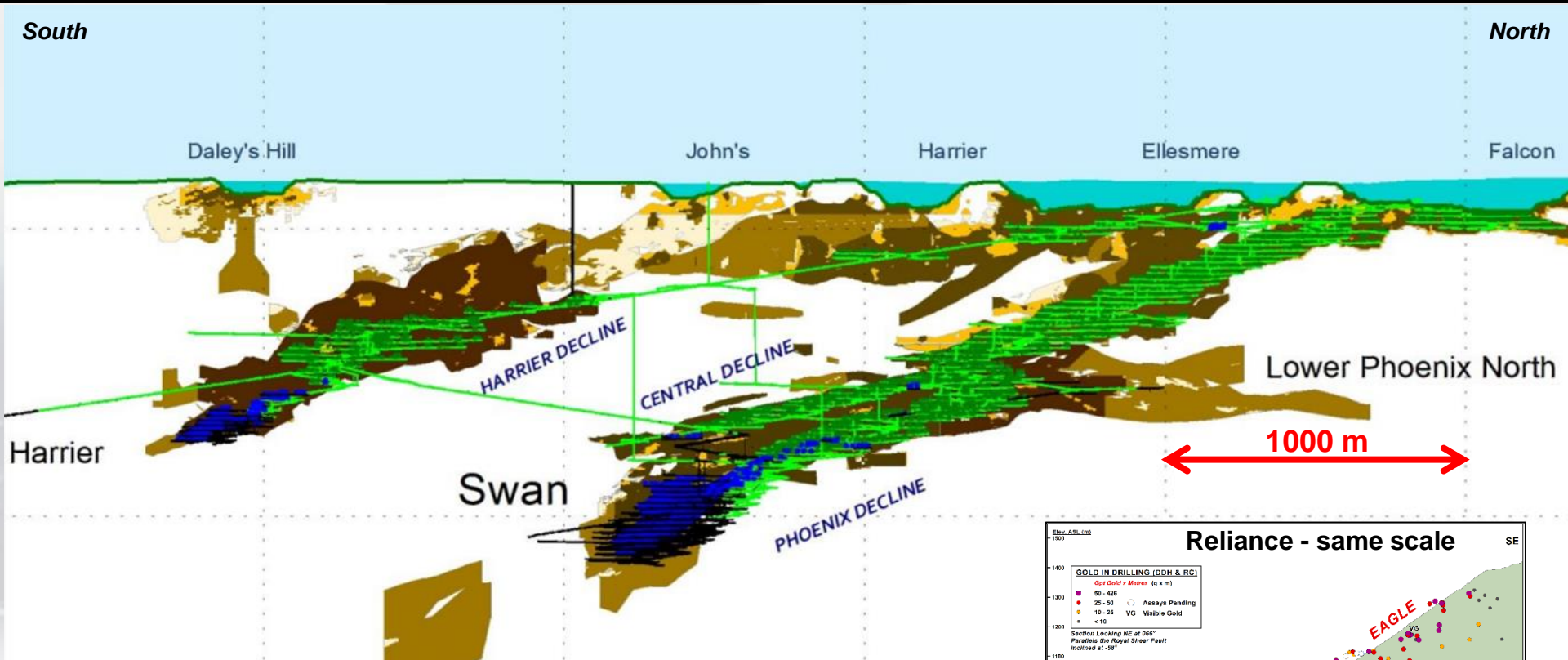
Significant Regional  
Mineralized Structure

Imperial Area open  
at Depth and  
along strike



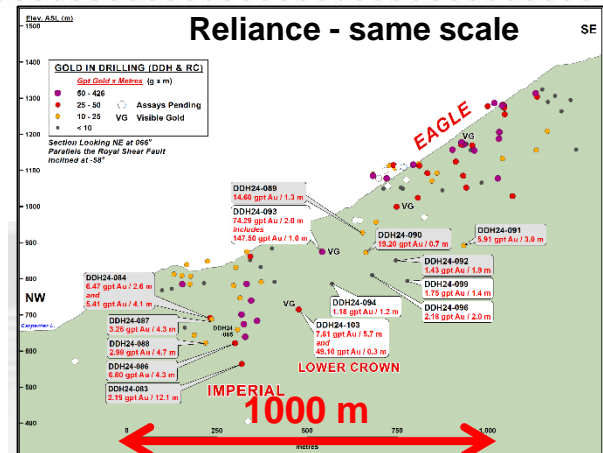


# Reliance Gold Project Fosterville Analogy?

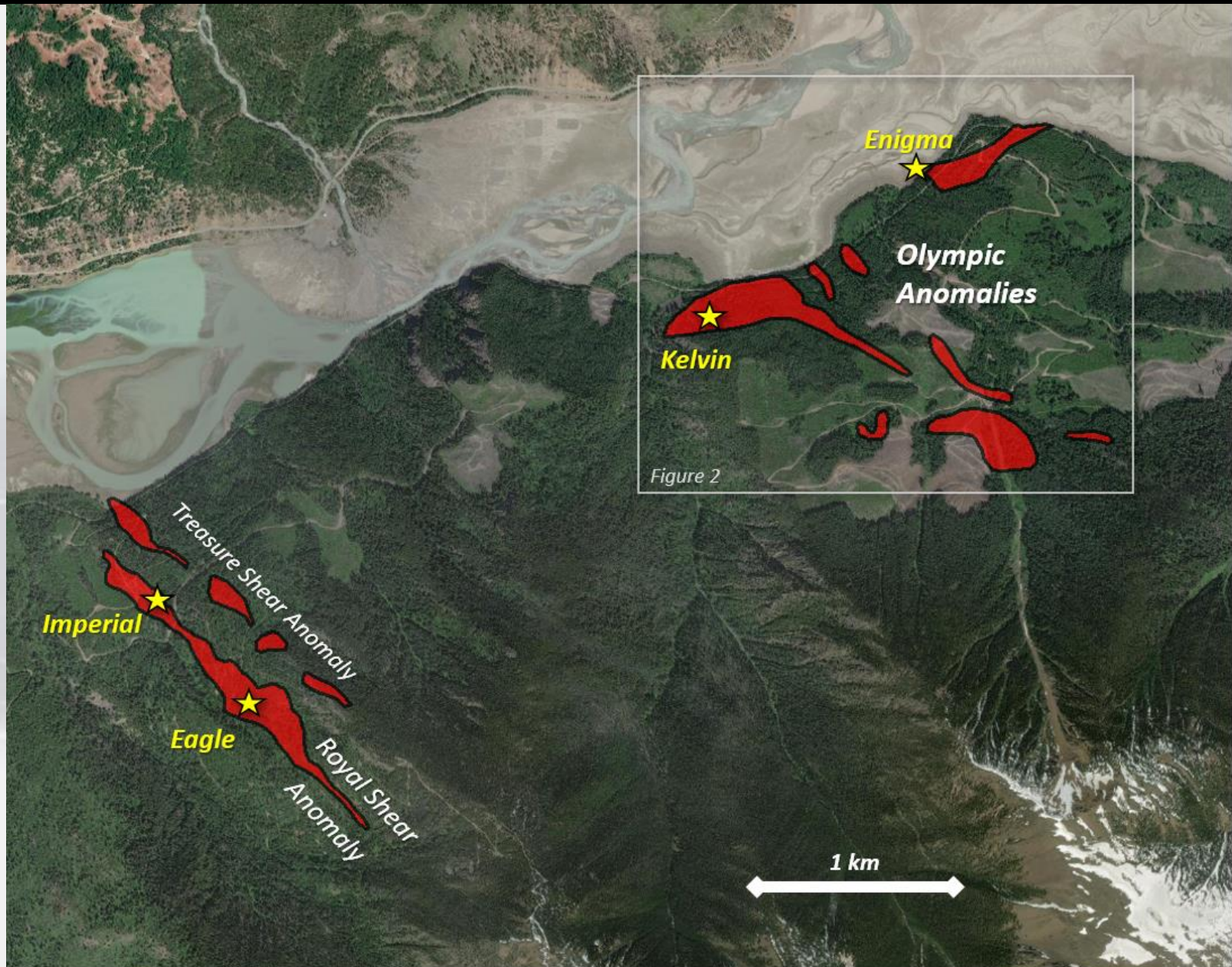


Fosterville gold mine was originally a low-grade heap leach open cut oxide operation with improving gold grades to depth (e.g. Swan zone – 2.34 moz @ 49.6 gpt Au) – resources currently defined to +1,300 m depth

Average vertical drill depth at Reliance is less than 70 m

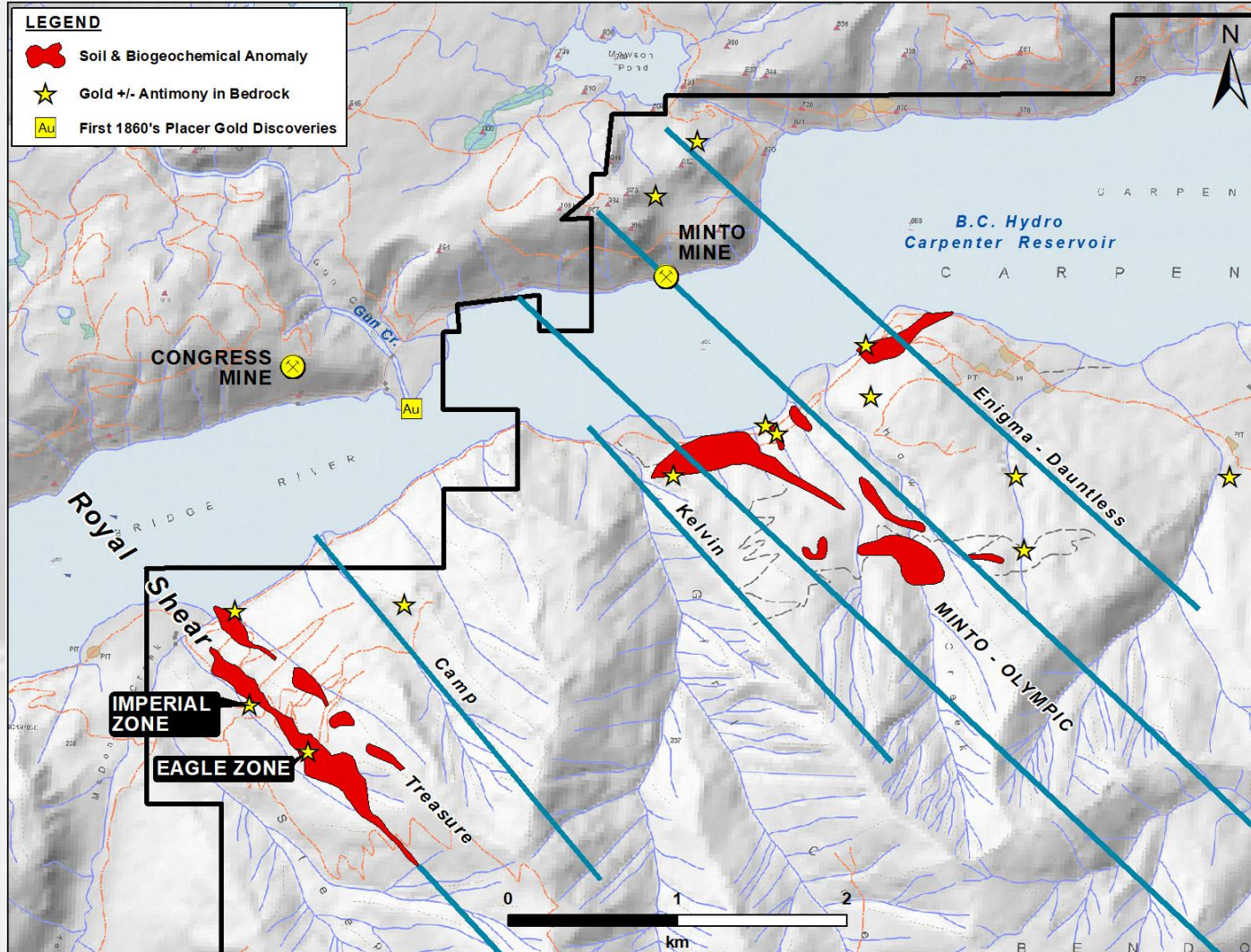


# Reliance Gold Project, B.C. Eagle, Imperial & the Olympic Geochemical Anomalies



# Reliance Gold Project, Gold Bridge, BC

## Target Trends



**Seven  
Subparallel  
Regional  
Structures &  
gold-antimony  
prospects**

# Reliance Gold Project Olympic Claim Option - Enigma Showing

**4.1 gpt Gold**  
**6.78% Antimony**



**Enigma Vein Grab Sample with Stibnite Crystals**

## Reliance Gold Project, BC 2024 Program

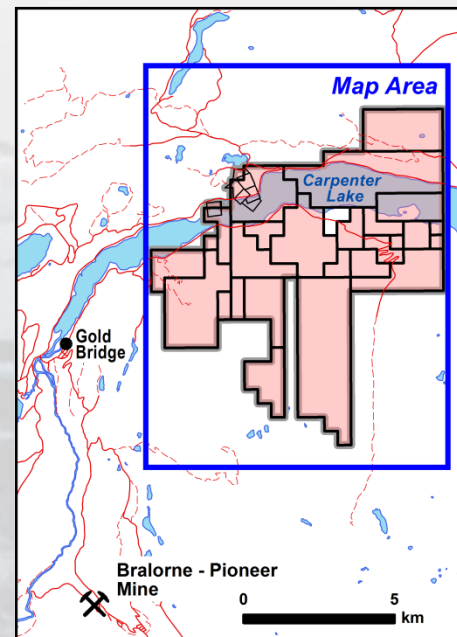
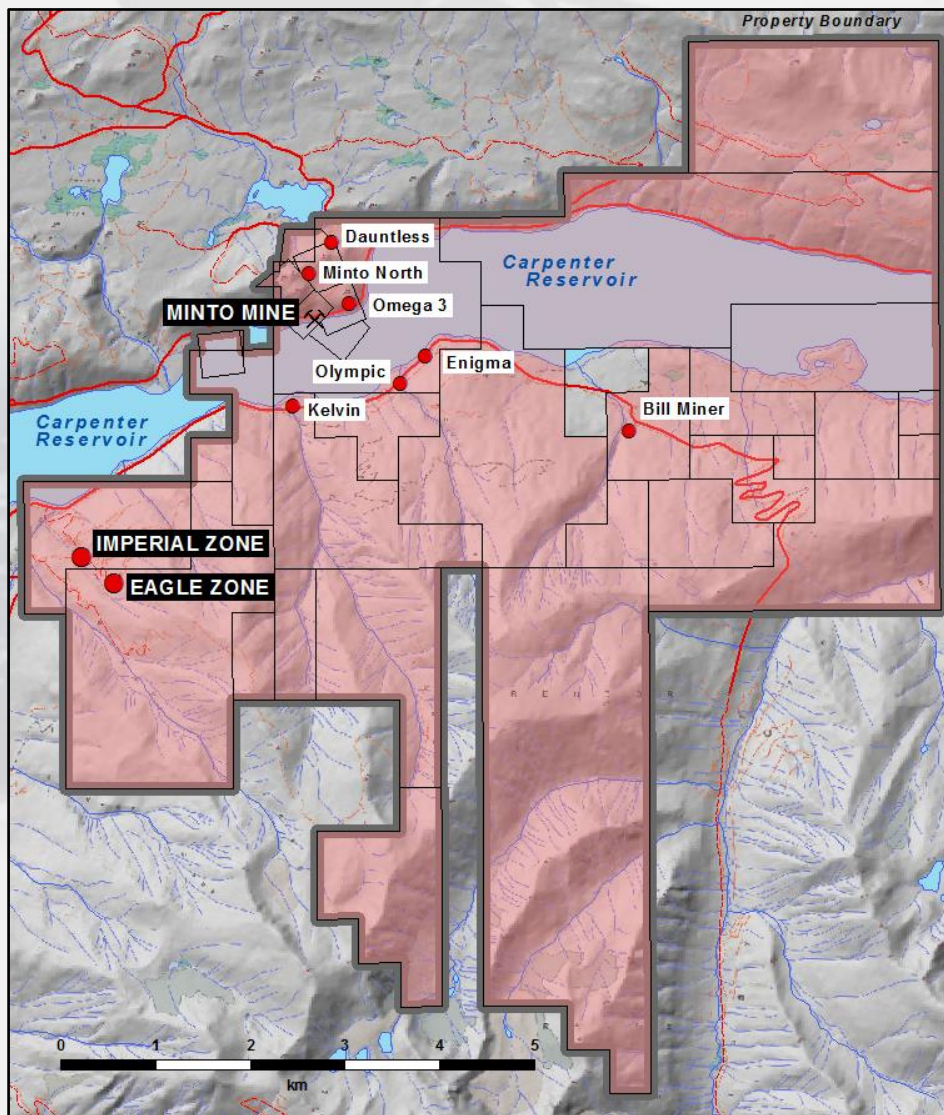
- 7,300 m of 2024 diamond drilling completed on the Royal Shear trend
- Geological, structural, mineralogical and metallurgical studies at Eagle and Imperial ongoing
- Revise 3D geological model in anticipation of an inaugural mineral resource estimate at Eagle and Imperial
- Geochemical surface sampling to open up trends and parallel structures
  - Advance targets at Upper Eagle, Enigma, Olympic soil grids
- Community consultation:
  - Drill permit application in the Olympic Area
- Continue environmental baseline studies

## Reliance Gold Project, BC Conclusions

- An outstanding New Exploration Discovery in an historically productive multi-million ounce Orogenic Gold Camp.
- Wide pervasive iron-carbonate sericite alteration, sulphidization, breccia, and antimony indicate an “Epizonal” Orogenic setting in a “brittle” structural regime – Epizonal comparables to Fosterville, Australia and recent Newfoundland discoveries.
- Model provides potential for a major gold system with depth continuity.
- RC & DDH Drilling has delivered a high percentage of significant and excellent intersections.
- New discovery at the **Eagle Zone** is now **550 m X 150 m** defined by over 70 RC and DDH – **Average 5.17 gpt Gold over average intersection width of 9.6 m** Open at depth and along strike. - **Eagle Crown & Imperial continuous**
- Wider 30 m wide shallow plunging mineralized trend confirmed at Imperial.
- New parallel mineralized trends developing as high priority drill targets

# Reliance Gold Project Property Size Now 5,444 Hectares

**Property  
further  
expanded in  
February  
2024**



## **Reliance Gold Project, BC**

### **Option Deal Terms to Earn 100%**

#### **Reliance Option Claims - prior to December 31, 2025:**

1. C\$300,000 cash. (\$160,000 remaining)
2. 4 Million Endurance Shares. (2.0 Million remaining)
3. C\$3 Million in exploration expenditures. (complete)
4. 2.5% NSR with a buyout of 1.5% for C\$1 M

#### **Olympic Option Claims - prior to December 31, 2024:**

1. C\$100,000 cash. (\$45,000 remaining)
2. 1.5 Million Endurance Shares. (900,000 remaining)
3. C\$300,000 in exploration expenditures (complete)
4. 2.0% NSR with a total buyout for C\$1.75 M

#### **Sanchez Option Claims - prior to December 31, 2025:**

1. C\$10,000 cash. (complete)
2. 300,000 shares (200,000 remaining)
3. No expenditure requirements or retained NSR





**[www.endurancegold.com](http://www.endurancegold.com)**

*Robert T. Boyd, P.Geo. is a qualified person as defined in National Instrument 43-101 and supervised the compilation of the information forming the basis for this summary. Any historic data summarized in this presentation should not be relied upon.*

Suite 1212 – 666 Burrard Street  
Vancouver, BC V6C 2X8 Canada  
Toll Free Phone: 877-624-2237

EDG: TSX.V | ENGF: OTC Pink | Frankfurt: 3EG