



# North American Focused Gold Exploration Company

**December 16, 2024**



EDG: TSX.V | ENGF: OTC Pink | Frankfurt: 3EG

## Corporate Disclosure

*The information contained herein, while obtained from sources which we believe are reliable, is not guaranteed as to its accuracy or completeness. The company is an exploration stage mineral resource exploration company and none of its mineral projects have yet to be proven to be economic. The contents of this presentation is for information purposes only and does not constitute an offer to sell or a solicitation to purchase any securities referred to herein.*

### **Forward-looking Statements**

*This presentation contains “forward-looking information” within the meaning of applicable Canadian securities regulations. All statements other than statements of historical fact herein, including, without limitation, statements regarding the company’s plans, goals or objectives and future exploration, development, potential mineralization, exploration results and future plans are forward-looking statements that involve various risks and uncertainties. There can be no assurance that such statements will prove to be accurate, and actual results and future events could differ materially from those anticipated in such statements. Readers are advised not to place an undue reliance on forward-looking statements.*

# Corporate Snapshot

<b>Shares Outstanding</b> <i>(Oct 30, 2024)</i>	173.2m
<b>Market Capitalization</b> <i>(C\$0.14 – Nov 18, 2024)</i>	C\$24.2 m
<b>Options</b> <i>(C\$0.20 – C\$0.34)</i>	10.0 m
<b>Warrants</b> <i>(C\$0.32 – C\$0.55)</i>	14.2 m
<b>Fully Diluted</b> <i>(Oct. 30, 2024)</i>	197.4 m
<b>Working Capital</b> <i>(September 30, 2024)</i>	C\$4.36 m*

\* includes marketable securities



**Insiders  
own  
over 60%**

## Key People

**Robert T. Boyd**  
*President, CEO & Director*

**Darren O'Brien**  
*Vice President Exploration*

**Teresa Cheng**  
*CFO & Corporate Secretary*

**Richard Gilliam**  
*Director*

**H. Ross Arnold**  
*Director*

**Robert Pease**  
*Director*

**J. Christopher Mitchell**  
*Director*

## Endurance Gold Corporation – Opportunities

**Endurance Gold – An Opportunity Generator with Pre-Existing Projects Divested for Cash, Shares, &/or Royalty such as:**

- **Rattlesnake Hills Au, WY – SOLD** to GFG Resources (TSX-V;GFG)
- **Pardo Paleoplacer Au, Ontario – SOLD** to Inventus Mining (TSX-V;IVS)

Current **100% controlled** Drill-Stage Projects in excellent jurisdictions are;

- **Elephant Mtn Gold Project**, Central Alaska – Tombstone Gold Belt - Intrusive Hosted Gold - 0.40 gpt Au over 147 m – 6 Large Targets - needs +\$2 Million drilling **FOR SALE or JOINT VENTURE**
- **Bandito Rare-Earth Niobium**, Yukon – Syenite Intrusive hosted - **HOLD**
- **Reliance Gold Project**, Gold Bridge BC – “Epizonal” Orogenic  
**The Exploration and Funding Focus for the Company**  
**SELF FUNDED**



# Endurance Gold Corporation – Core Gold Assets

## HIGHLIGHTS AND PLANS

**100% controlled - Drill-ready Gold Projects - top-ranked jurisdictions.**

### **Reliance Gold Project, B.C. – Epizonal Orogenic – 2024 Drilling**

- Next to a former +4 m ounce producer
- Seven phases of drilling – up to **15.7 gpt Gold over 28.4 m**
- **1.5 km +100 ppb** gold-in-soil - strong system strike potential
- 84 RC Holes completed with excellent results
- 97 DD Holes with excellent assay results

### **Elephant Mtn Project, Alaska – Intrusive Hosted Gold**

- Within the Yukon-Alaska Tombstone Gold Belt
- Six drill targets (kilometre scale) within an emerging 12 x 5 km district.
- Drill intersections such as **0.40 gpt Gold over 147 m** and **4.1 gpt Gold over 4.6 m**
- Permitted - Further drilling warranted

**AVAILABLE FOR JOINT VENTURE  
OR STRATEGIC ALTERNATIVE**

# Reliance Gold Project

## Bralorne Camp, Gold Bridge, B.C.

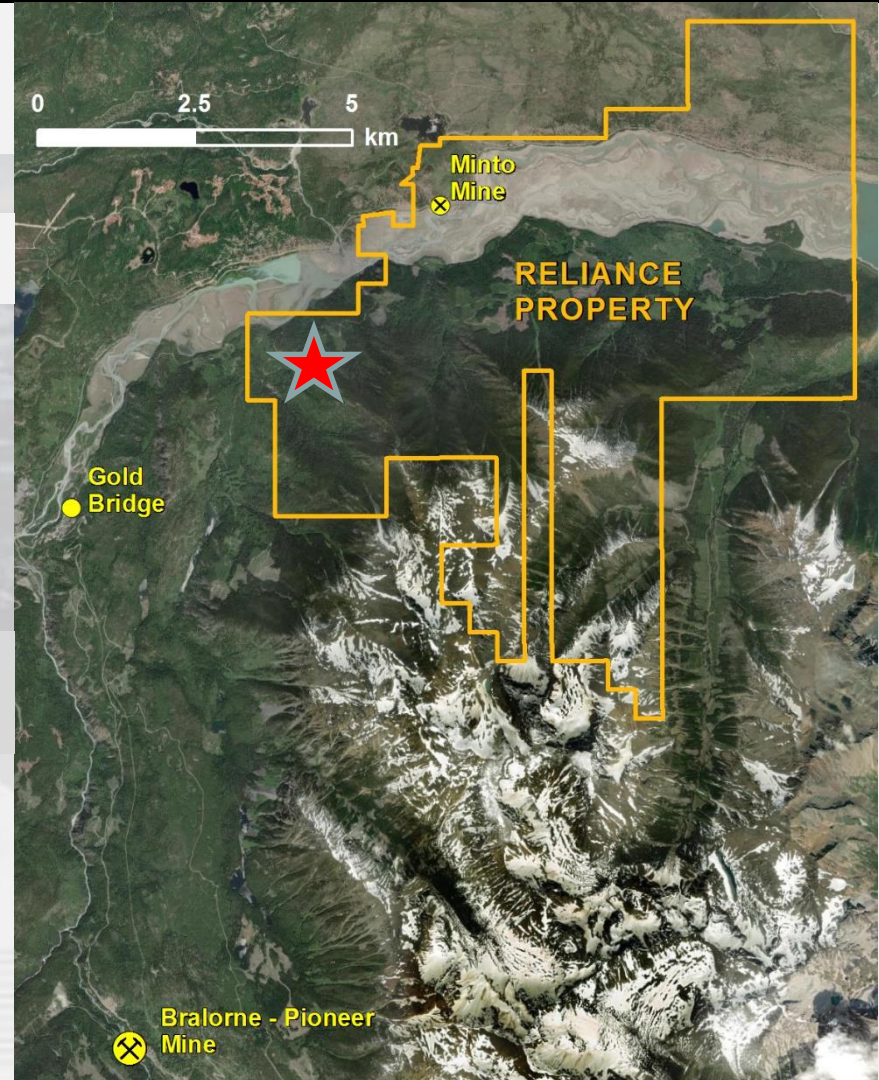
### New Surface Discovery

10 km from historic Bralorne Camp  
(+4 million ounces of historic production)



4 hour Drive  
from Vancouver

  
Imperial and  
Eagle Zones





## Reliance Gold Project, Gold Bridge, BC Program Activity Highlights 2020 to 2024

### “Discovery Stage” Gold Project in a productive gold camp.

- Early Exploration between 1985 and 2008 - limited focus over about 100 m - Never systematically explored
- Progress since 2020 – Systematically Expanded potential to 2 km.
- 2020 to 2022 – Surface channel sampling - **Excellent Surface Results**
- 2020, 2021 & 2022 - Reverse Circulation (‘RC’) drilling - **84 RC holes**
- 2021 to 2024 - **108 Diamond Drill Holes** at Eagle & Imperial Zones
- **Excellent drilling Results statistics – Results Pending on 10 DDH**
- Highlights:
  - **Eagle Discovered & Expanded to 550 m strike & 9 m width**
  - **Deep +30 m wide Imperial Zone Discovered**
  - **Upper and NEW Lower Crown Zones Discovered**
  - **NEW Lower Imperial Gabbro Zone Discovered**

# Reliance Gold Project, B.C.

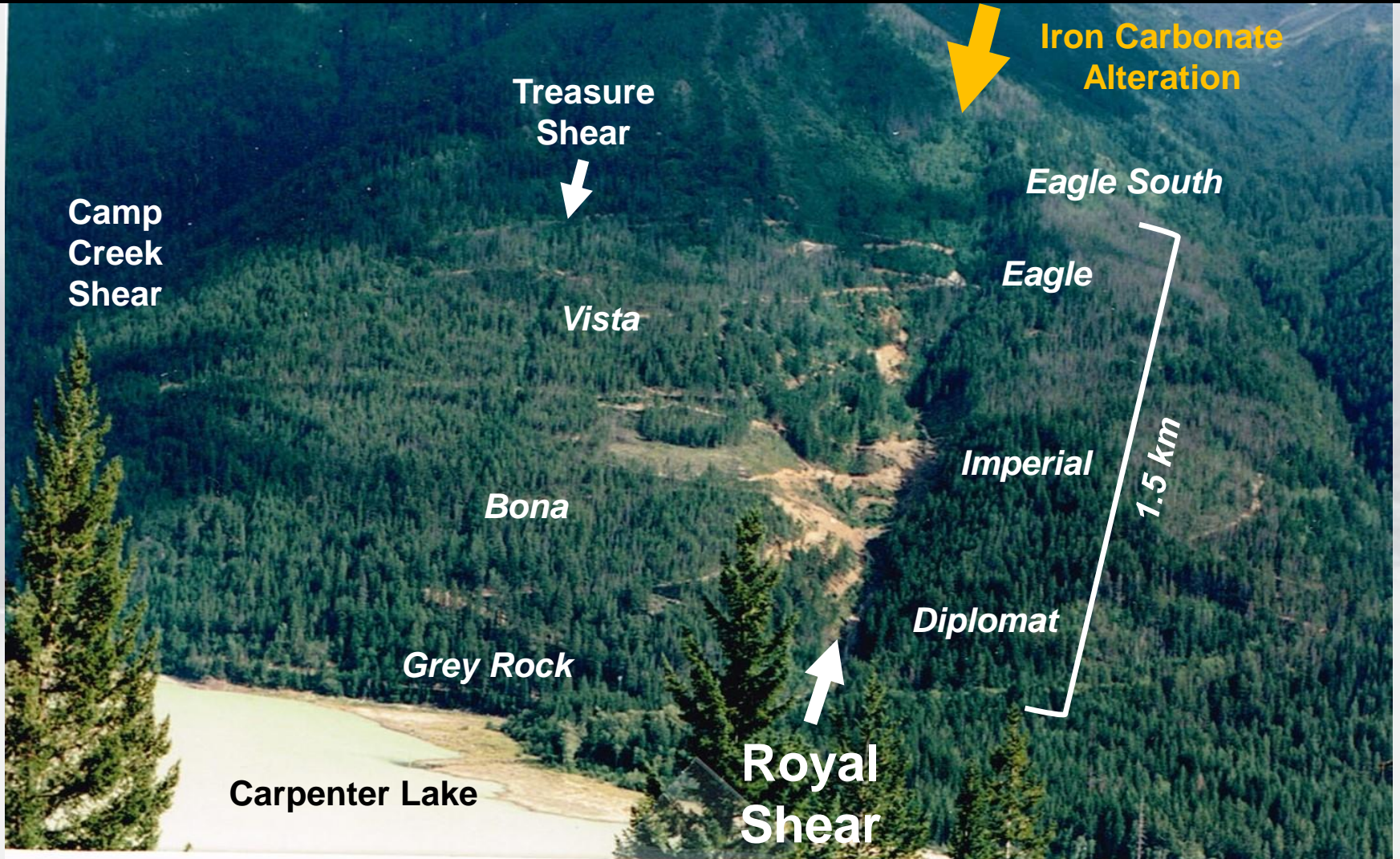
## Best Diamond Drill Holes 2021 to 2023

<u>Zone &amp; DDH</u>	<u>From</u>	<u>g/t X m</u>	<u>Au g/t / Metre</u>
Eagle - 22-058	32.1	426	3.05 gpt / 139.9m
Eagle - 21-020	33.3	389	15.70 gpt / 24.8m
Imperial - 21-009	161.0	210	8.47 gpt / 24.9m
Eagle - 21-006	25.6	210	8.62 gpt / 24.4m
Eagle - 23-076	9.3	133	5.80 gpt / 23.0m
Eagle - 22-027	109.2	124	4.16 gpt / 30.0m
Eagle - 22-026	80.4	108	8.06 gpt / 13.5m
Eagle - 22-024	27.0	100	8.41 gpt / 12.0m
Eagle - 22-036	35.4	97	7.65 gpt / 12.7m
Eagle - 22-031	124.9	90	7.58 gpt / 11.9m
Eagle - 22-045	35.1	84	7.31 gpt / 11.6m
Eagle - 21-004	1.0	84	4.44 gpt / 19.0m
Imperial - 23-065	212.8	83	8.98 gpt / 9.3m
Eagle - 22-028	97.0	82	2.59 gpt / 31.6m
Imperial - 23-066	306.5	72	17.28 gpt / 4.2m

+2024 = 74.29 gpt / 2.0m  
 = 4.47 gpt / 15.3m

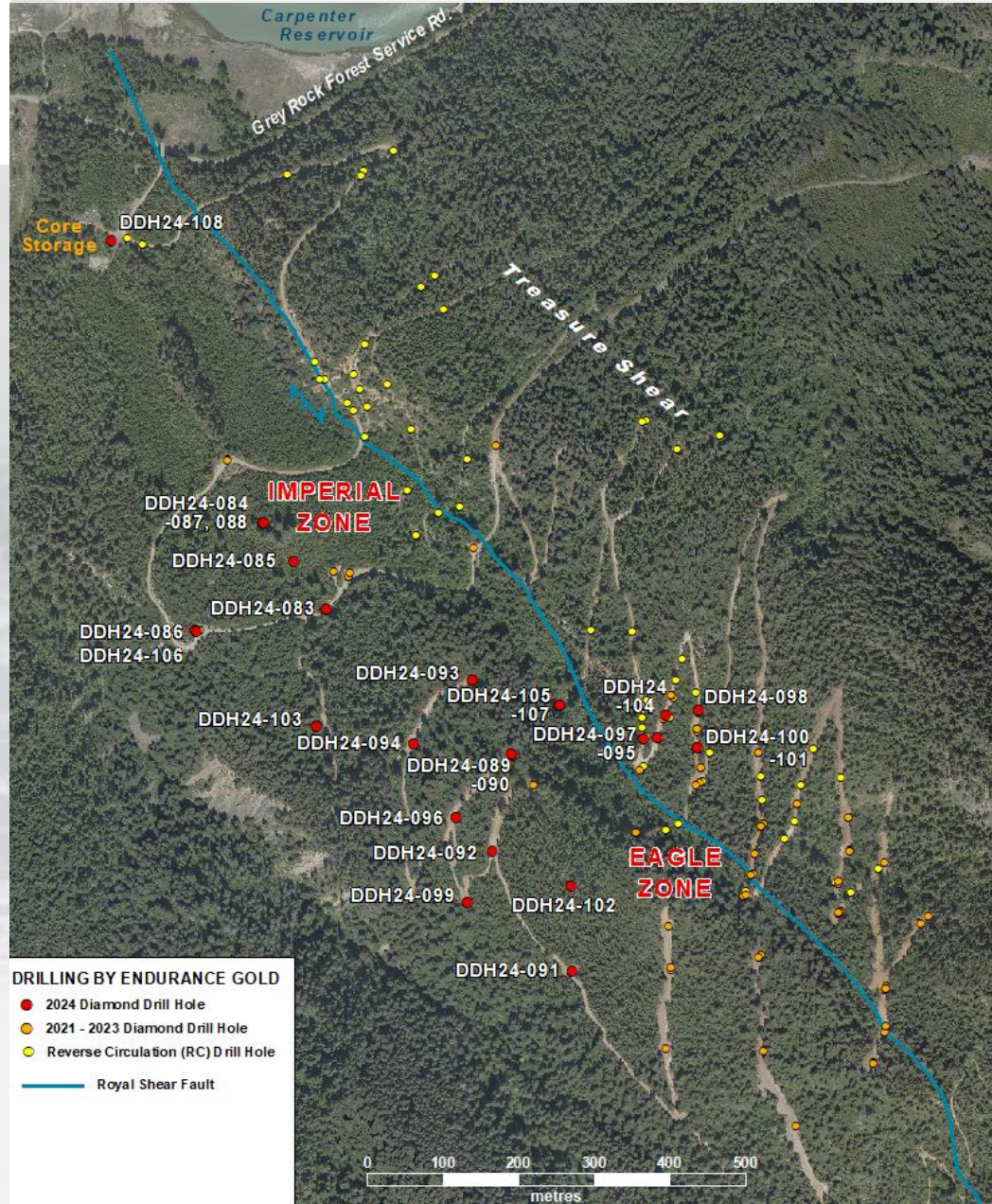


# Reliance Gold Project Bralorne Camp, Gold Bridge B.C.

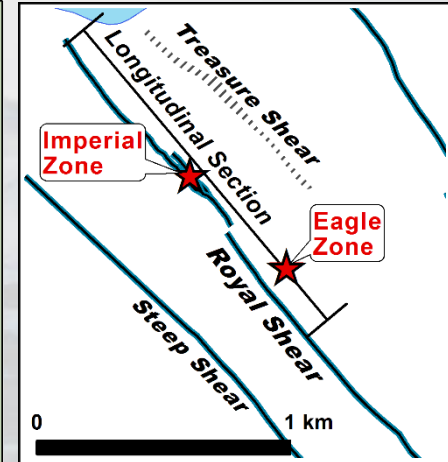
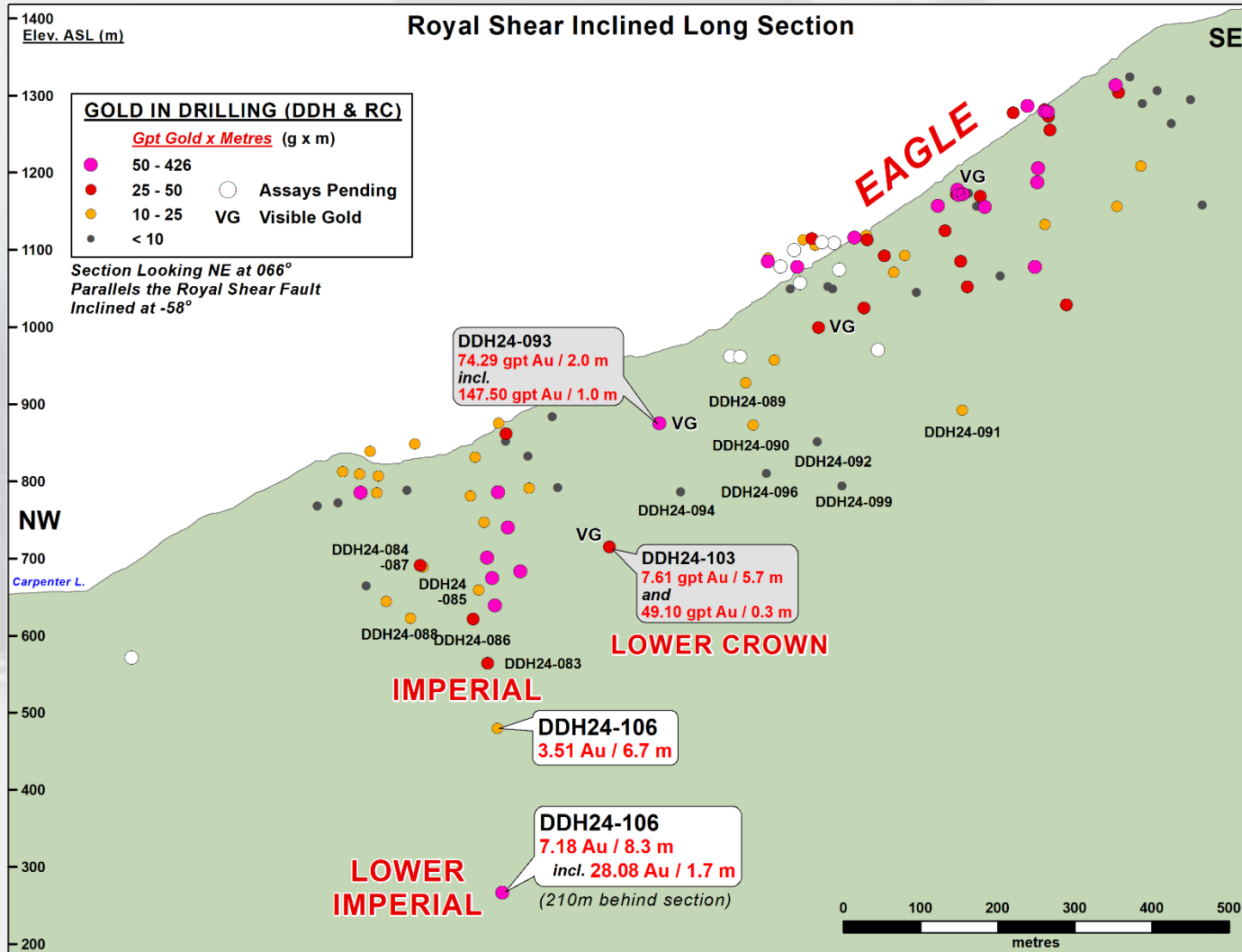




# Reliance Gold Project 2024 Drill Hole Locations



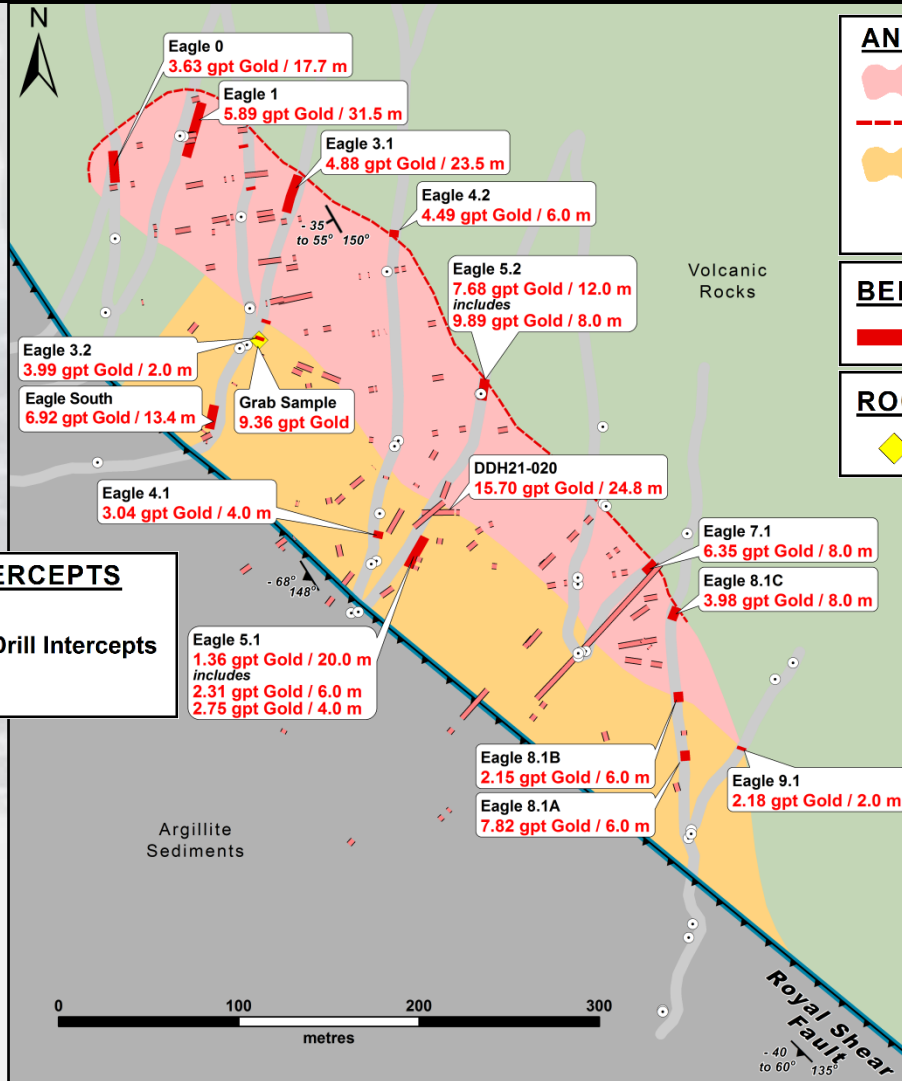
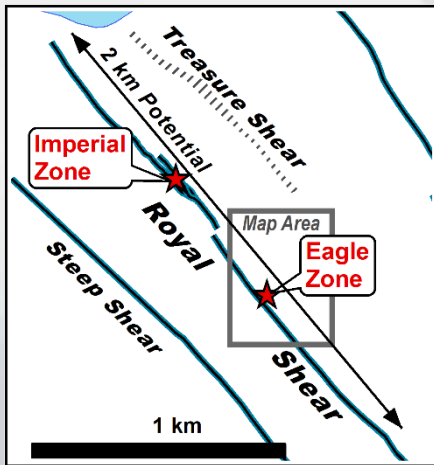
# Reliance Gold Project Royal Shear Inclined Long Section – 2024 Update





# Reliance Gold Project

## Bedrock Channel Samples Eagle Zone




**ANOMALIES & MINERALIZATION**

-  Eagle Zone
-  Eagle Zone Surface Exposure
-  Eagle South Feeder Zone  
*Intense brittle-ductile deformation  
Strong pervasive ankerite-sericite alteration  
Multiple brecciated quartz veins*

**BEDROCK CHANNEL SAMPLING**

-  Channel Sample Gold Intercept

**ROCK GRAB SAMPLING**

-  2022 Rock Grab Sample

**DRILLING REPORTED GOLD INTERCEPTS**  
*Projected Vertically to Surface*

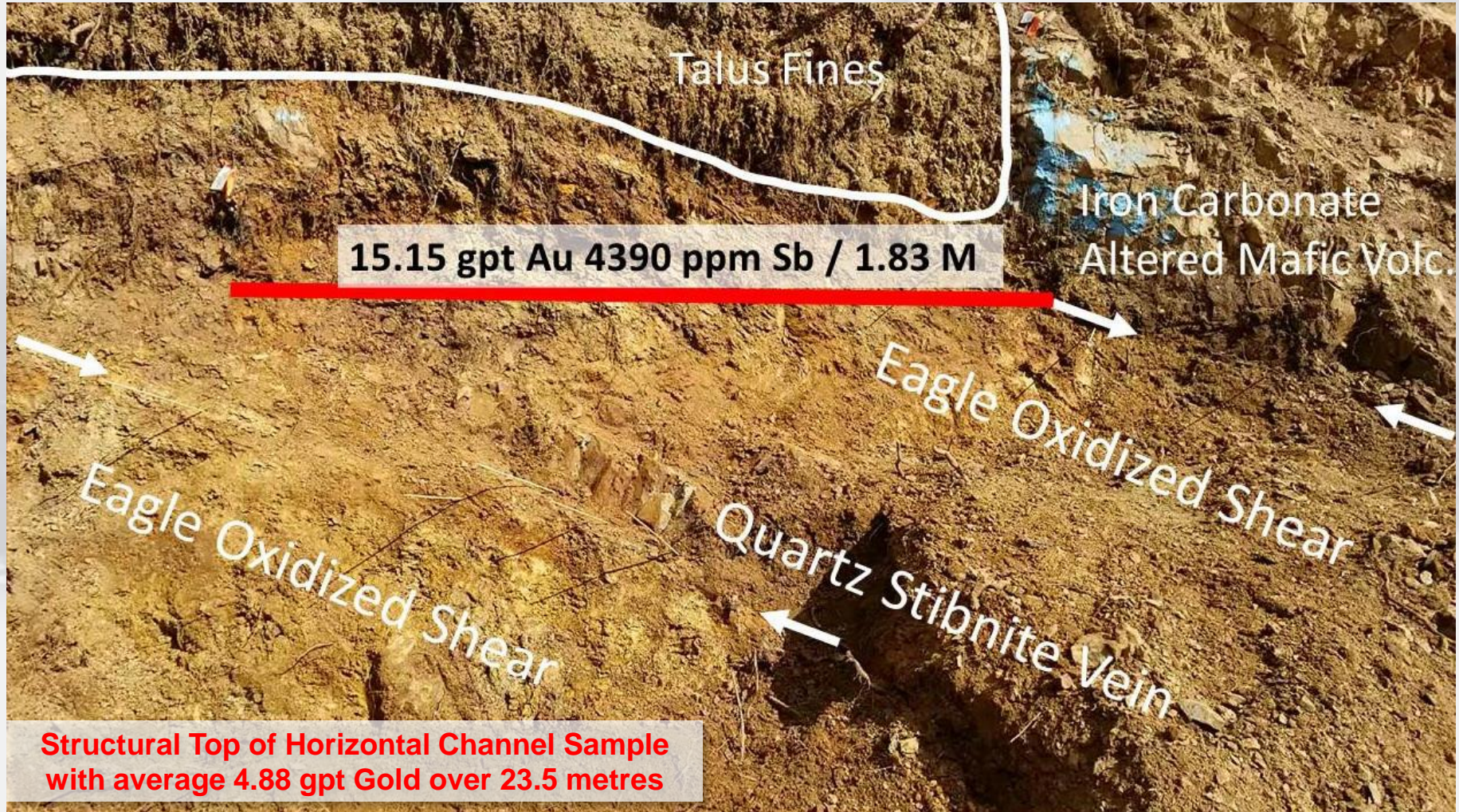
-  2020-2022 Reported DDH & RC Drill Intercepts
-  Diamond Drill Hole Location

**Eagle Channel Samples indicate 550 m of strike trend**



# Reliance Gold Project

## Eagle Zone at Eagle 3 Road – West Dipping Shear Zone





## Reliance Gold Project, BC – 2020, 2021 & 2022 RC Drilling

- Completed **84 RC Drill Holes** in 2020, 2021 and spring 2022.
- Excellent results statistics in RC - **40 of 84 RC holes returned > 10 gram\*m**
- Most of the Best RC holes in the **EAGLE Area** - with some excellent results:
  - **14.08 gpt Gold over 15.24 m**
  - **8.57 gpt Gold over 10.66 m**
- **IMPERIAL Zone** – Up plunge Intersection - **7.23 gpt Gold over 4.6 m**
- **DIPLOMAT Zone** - **16.49 gpt Gold over 4.57 m**

## Reliance Gold Project, BC – 2021 to 2024 DDH Statistics

1. Completed **98 Diamond** Drill Holes between 2021 to 2024 (with Assays)
2. Majority of Drill holes at the **Eagle Area – SIGNIFICANT DISCOVERY**
  - 15.7 gpt Gold over 24.8 m including 26.96 gpt Gold over 4.1 m
  - 8.62 gpt Gold over 24.4 m including 17.02 gpt Gold over 4.3 m
  - 8.41 gpt Gold over 12.0 m, 8.05 gpt Gold over 13.0 m.
  - 3.05 gpt Gold / 139.9 m, 4.16 gpt Gold / 30.0 m, 5.8 gpt Gold / 23 m
3. 18 DDH at **Imperial & NEW Lower Imperial Zones** – majority mineralized
  - 8.47 gpt Gold over 24.9 m including 16.27 gpt Gold over 10.5 m
  - 8.98 gpt Gold over 9.3 m including 12.44 gpt Gold over 6.0 m
  - 17.28 gpt Gold over 4.2 m including 35.20 gpt Gold over 1.3 m
  - 7.18 gpt Gold over 8.3 m including 28.08 gpt Gold over 1.7 m
4. **63 of 98 DDH** have significant intersections exceeding 10 gram X metre
5. **17 of 98 DDH** have excellent drill intersections  
(70 to 426 gram X metre)

# Reliance Gold Project, B.C.

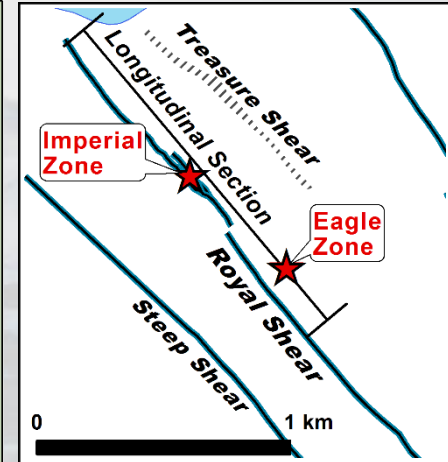
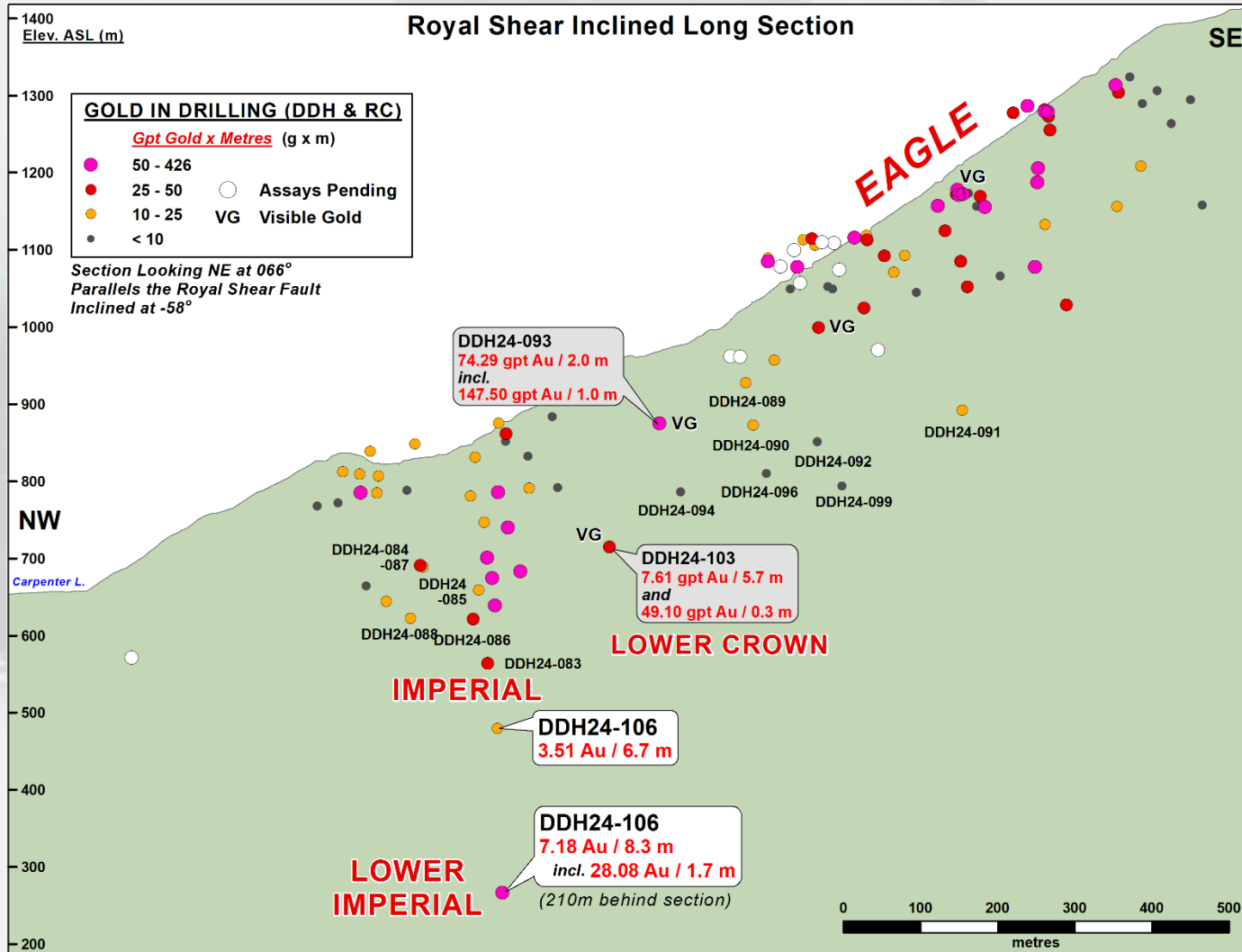
## Best Diamond Drill Holes 2021 to 2023

<u>Zone &amp; DDH</u>	<u>From</u>	<u>g/t X m</u>	<u>Au g/t / Metre</u>
Eagle - 22-058	32.1	426	3.05 gpt / 139.9m
Eagle - 21-020	33.3	389	15.70 gpt / 24.8m
Imperial - 21-009	161.0	210	8.47 gpt / 24.9m
Eagle - 21-006	25.6	210	8.62 gpt / 24.4m
Eagle - 23-076	9.3	133	5.80 gpt / 23.0m
Eagle - 22-027	109.2	124	4.16 gpt / 30.0m
Eagle - 22-026	80.4	108	8.06 gpt / 13.5m
Eagle - 22-024	27.0	100	8.41 gpt / 12.0m
Eagle - 22-036	35.4	97	7.65 gpt / 12.7m
Eagle - 22-031	124.9	90	7.58 gpt / 11.9m
Eagle - 22-045	35.1	84	7.31 gpt / 11.6m
Eagle - 21-004	1.0	84	4.44 gpt / 19.0m
Imperial - 23-065	212.8	83	8.98 gpt / 9.3m
Eagle - 22-028	97.0	82	2.59 gpt / 31.6m
Imperial - 23-066	306.5	72	17.28 gpt / 4.2m

+2024 = 74.29 gpt / 2.0m  
 = 4.47 gpt / 15.3m



# Reliance Gold Project Royal Shear Inclined Long Section – 2024 Update



# Reliance Gold Project Royal Shear Geology & Cross Sections



## REPORTED GOLD INTERCEPTS

5.00 gpt Gold / 9.8 m

2023 Diamond Drill Intercept

## DRILLING BY ENDURANCE GOLD

- Diamond Drill Hole
  - Reverse Circulation (RC) Drill Hole
- Select drill traces shown Au = Gold

## MINERALIZATION

- Surface Exposed Mineralization
- Mineralization Trend Projected from depth

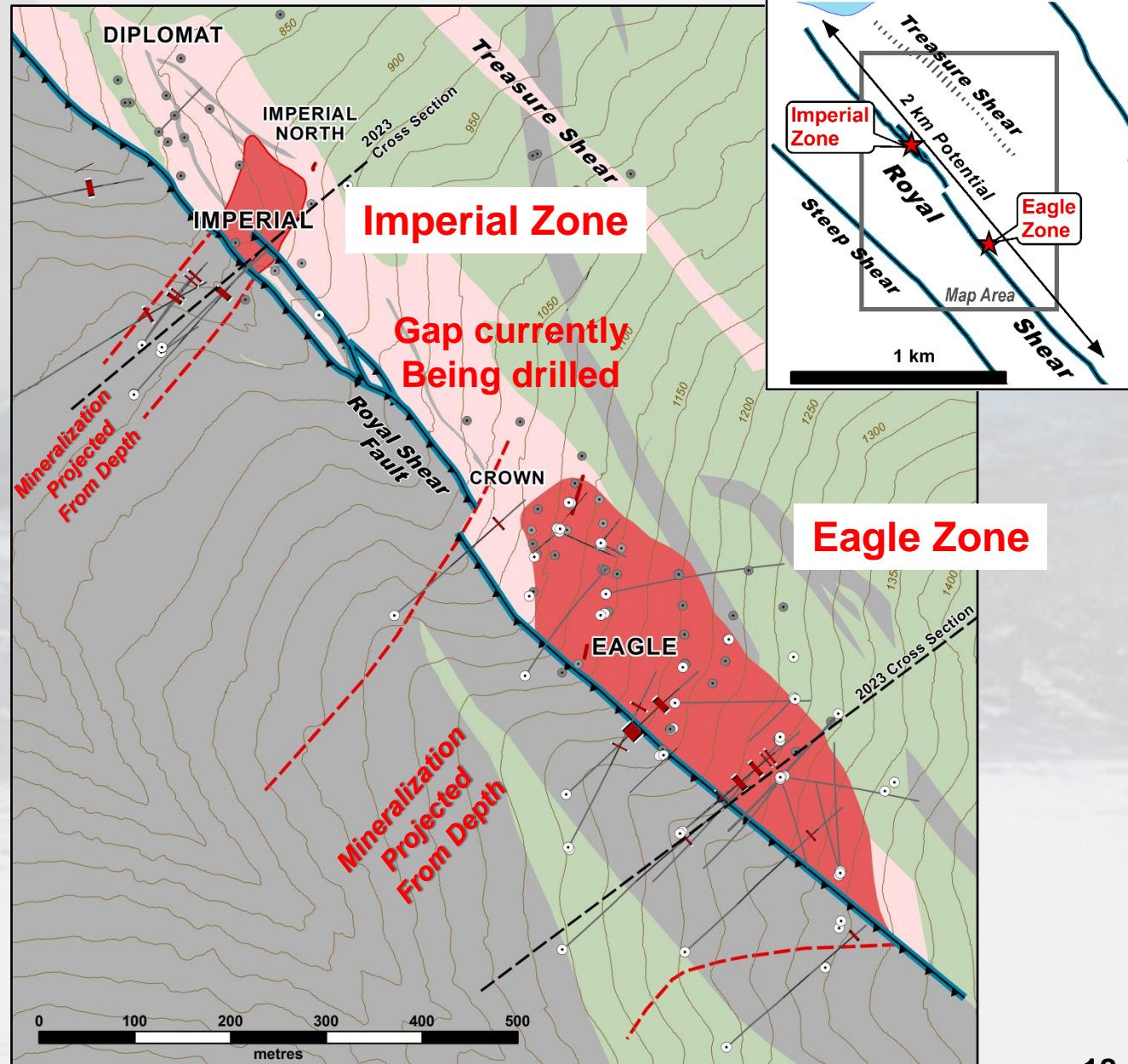
## GEOLOGY

### ALTERATION

- Ankerite Alteration +/- Quartz

### ROCK TYPE

- Mafic Volcanic / Gabbro
- Argillite and Chert



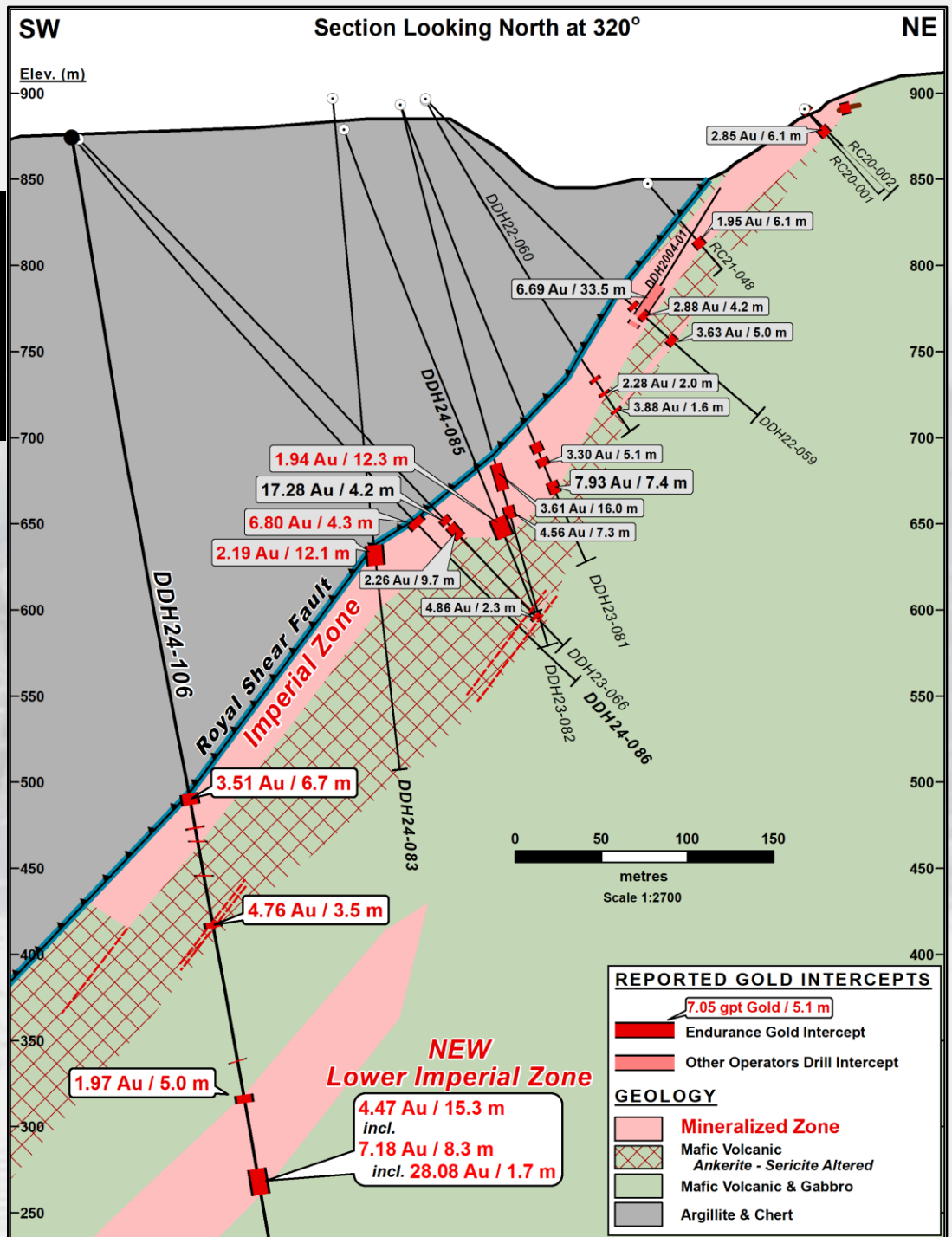


# Reliance Gold Project 2024 Imperial Zone Cross Section Location



# Reliance Gold Project Imperial Zone 2024 Drill Cross-Section DDH24-106

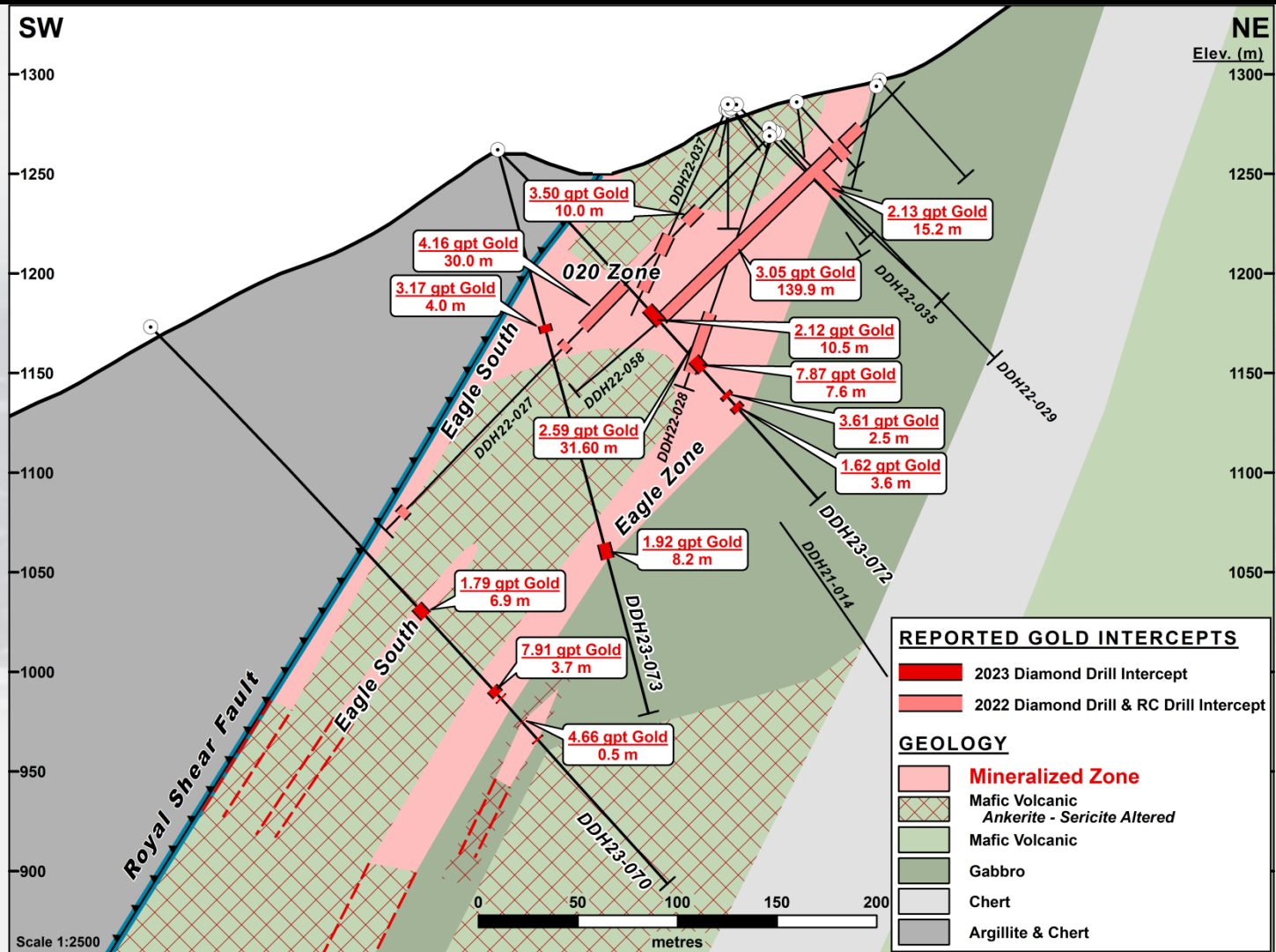
**DDH24-106  
NEW LOWER  
IMPERIAL ZONE  
DISCOVERY**





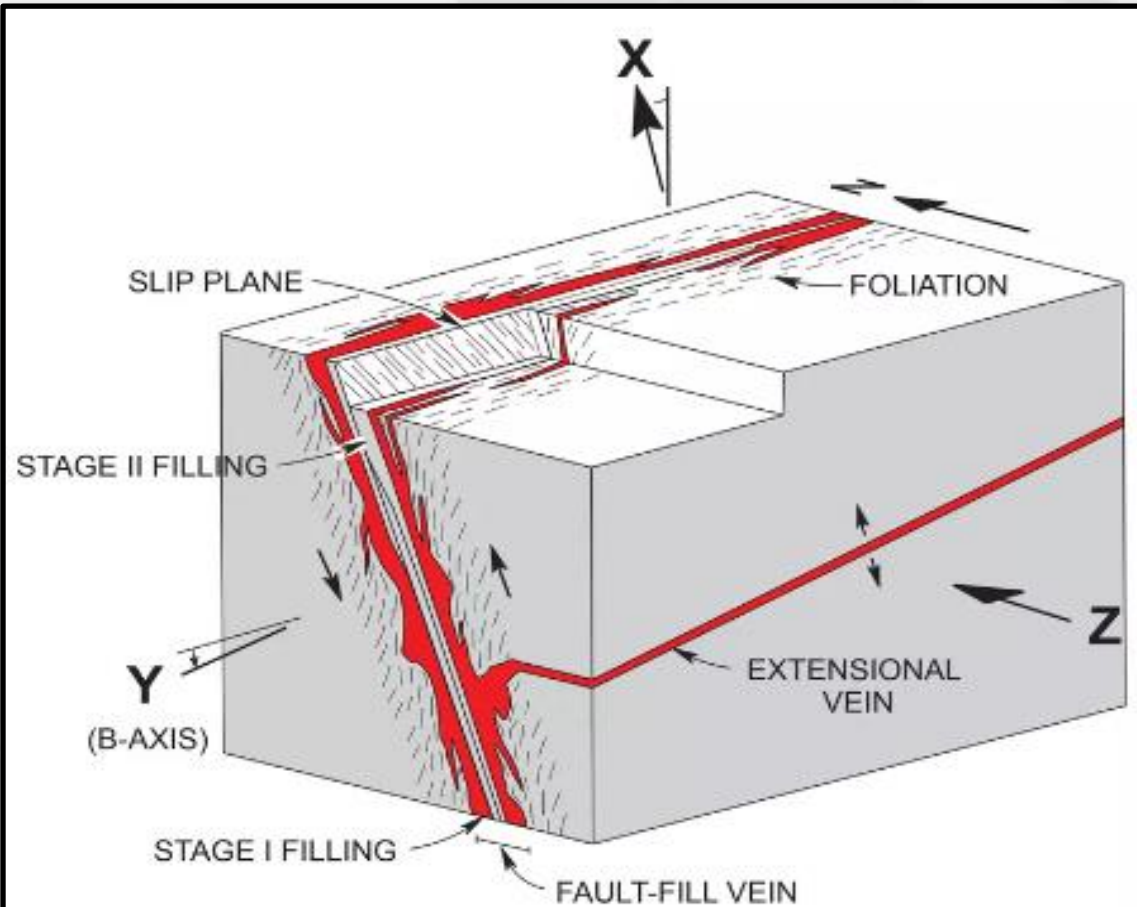
# Reliance Gold Project

## Eagle Cross Section DDH23-070, -072, -073

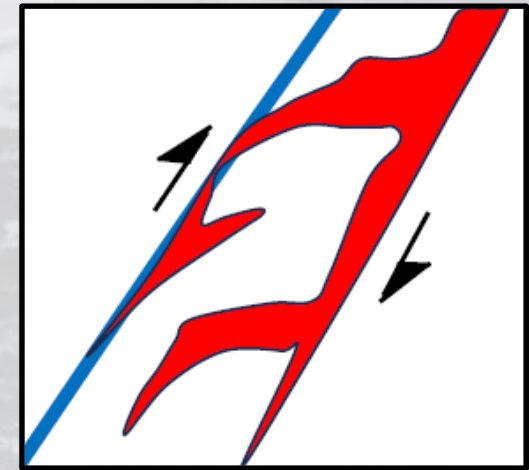


# Reliance Gold Project

## Eagle to Imperial Structural Model



**FIGURE 8.** Schematic diagram illustrating the geometric relationships between the structural element of veins and shear zones and the deposit-scale strain axes (from Robert, 1990).



*Reliance Interpretation  
at Eagle Zone  
(Rhys 2024)*



# Reliance Gold Project

## Eagle Mineralized Breccia Textures

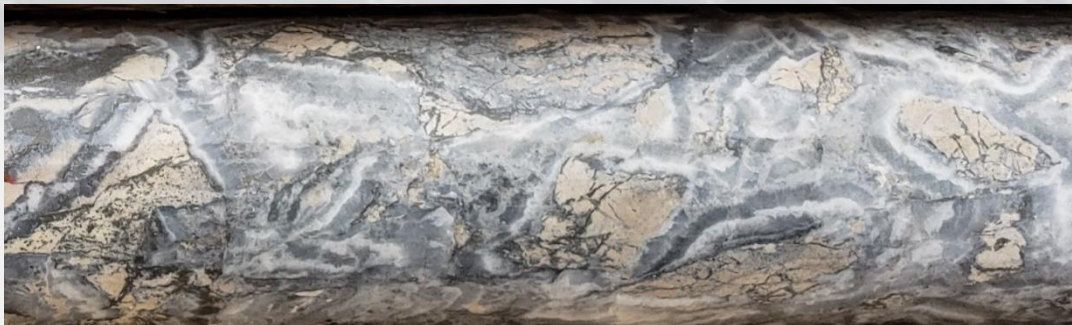
**Gold - Arsenopyrite Quartz Breccia (Cataclastite) 6.19 gpt Gold over 0.85 m**



**DDH22-027  
@ 116.4m**

**on 027 Vein  
Margin**

**Gold - Aspy "Coxcomb" Quartz Breccia 14.35 gpt Au /2.0 m**



**DDH22-031  
@ 128 m**

## Reliance Gold Project Upper Crown Discovery in DDH24-093

NQ Core **Visible gold** in Quartz Vein – **147.5 gpt gold / 1.0 m**





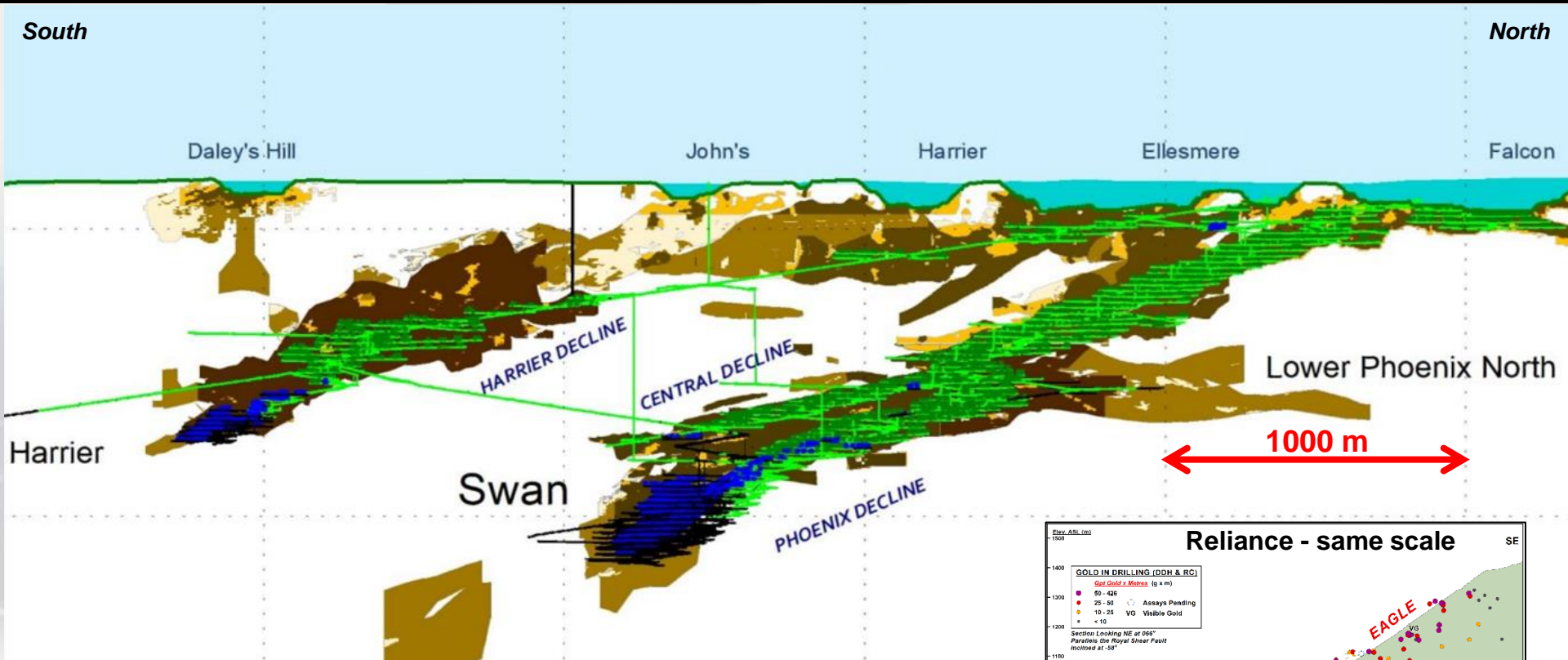
# Reliance Gold Project

## Visible Gold in 2023 Drilling: DDH23-078

**DDH23-078 Visible gold in “Coxcomb” Quartz Vein BX  
9.67 gpt Gold / 1.2 m**

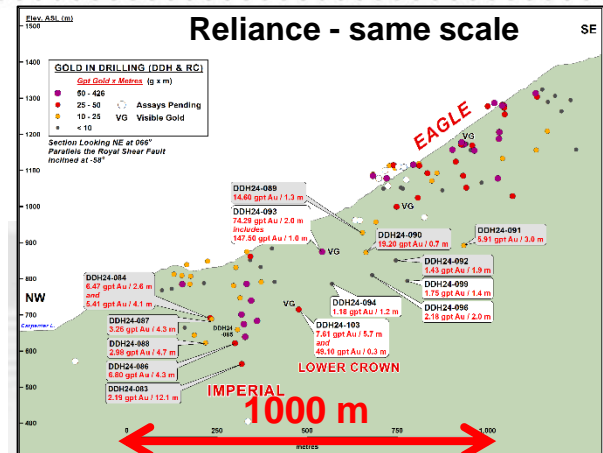


# Reliance Gold Project Fosterville Analogy?



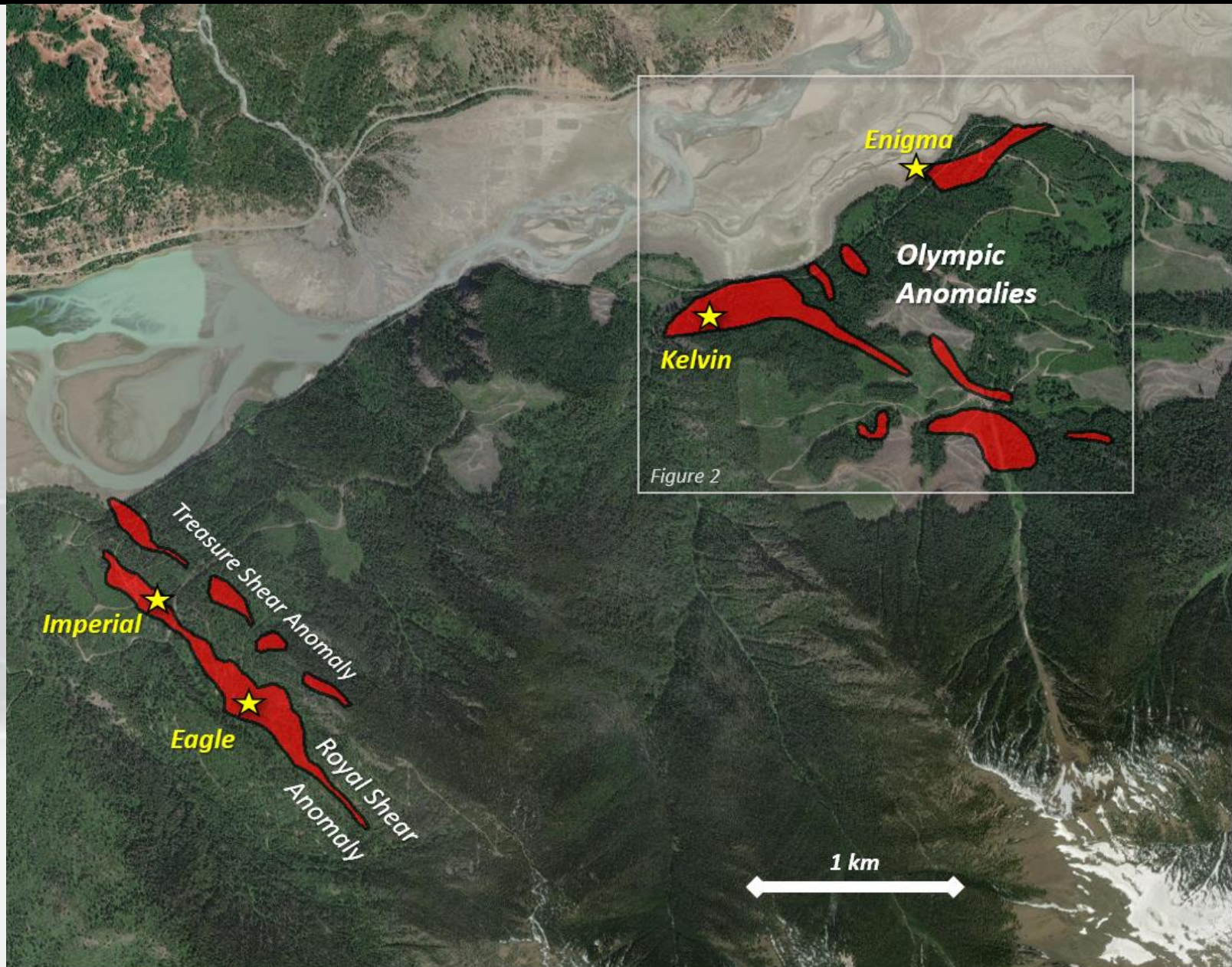
Fosterville gold mine was originally a low-grade heap leach open cut oxide operation with improving gold grades to depth (e.g. Swan zone – 2.34 moz @ 49.6 gpt Au) – resources currently defined to +1,300 m depth

Average vertical drill depth at Reliance is less than 70 m





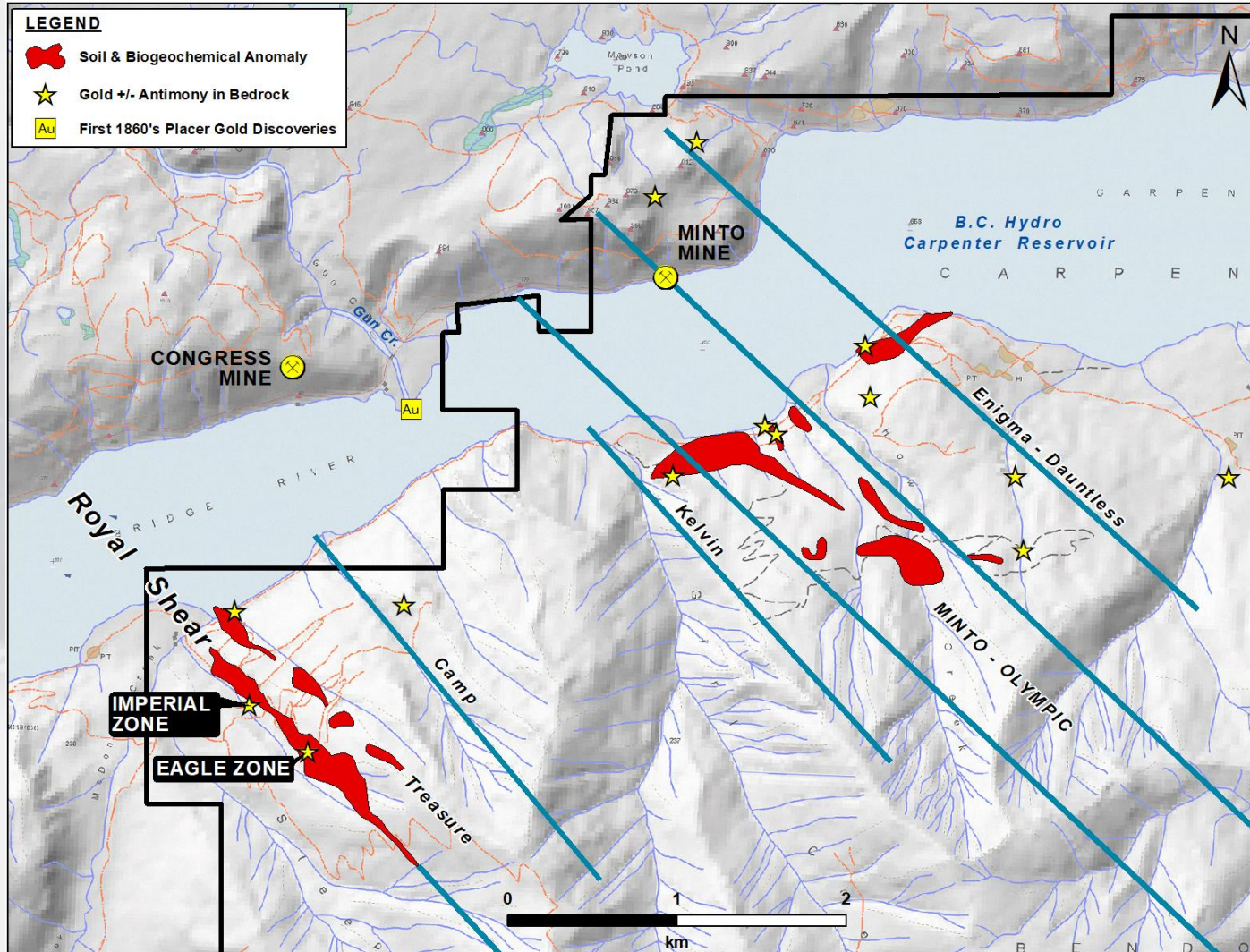
# Reliance Gold Project, B.C. Eagle, Imperial & the Olympic Geochemical Anomalies





# Reliance Gold Project, Gold Bridge, BC

## Target Trends



**Seven  
Subparallel  
Regional  
Structures &  
gold-antimony  
prospects**

## Reliance Gold Project, BC 2024 Program

- 7,300 m of 2024 diamond drilling completed on the Royal Shear trend
- Geological, structural, mineralogical and metallurgical studies at Eagle and Imperial ongoing
- Revise 3D geological model in anticipation of an inaugural mineral resource estimate at Eagle and Imperial
- Geochemical surface sampling to open up trends and parallel structures
  - Advance targets at Upper Eagle, Enigma, Olympic soil grids
- Community consultation:
  - Drill permit application in the Olympic Area
- Continue environmental baseline studies



## Reliance Gold Project, BC Conclusions

- An outstanding New Exploration Discovery in an historically productive multi-million ounce Orogenic Gold Camp.
- Wide pervasive iron-carbonate sericite alteration, sulphidization, breccia, and antimony indicate an “Epizonal” Orogenic setting in a “brittle” structural regime – Epizonal comparables to Fosterville, Australia and recent Newfoundland discoveries.
- Model provides potential for a major gold system with depth continuity.
- RC & DDH Drilling has delivered a high percentage of significant and excellent intersections.
- New discovery at the **Eagle Zone** is now **550 m X 150 m** defined by over 70 RC and DDH – **Average 5.17 gpt Gold over average intersection width of 9.6 m** Open at depth and along strike. - **Eagle Crown & Imperial continuous**
- Wider 30 m wide shallow plunging mineralized trend confirmed at Imperial.
- New parallel mineralized trends developing as high priority drill targets

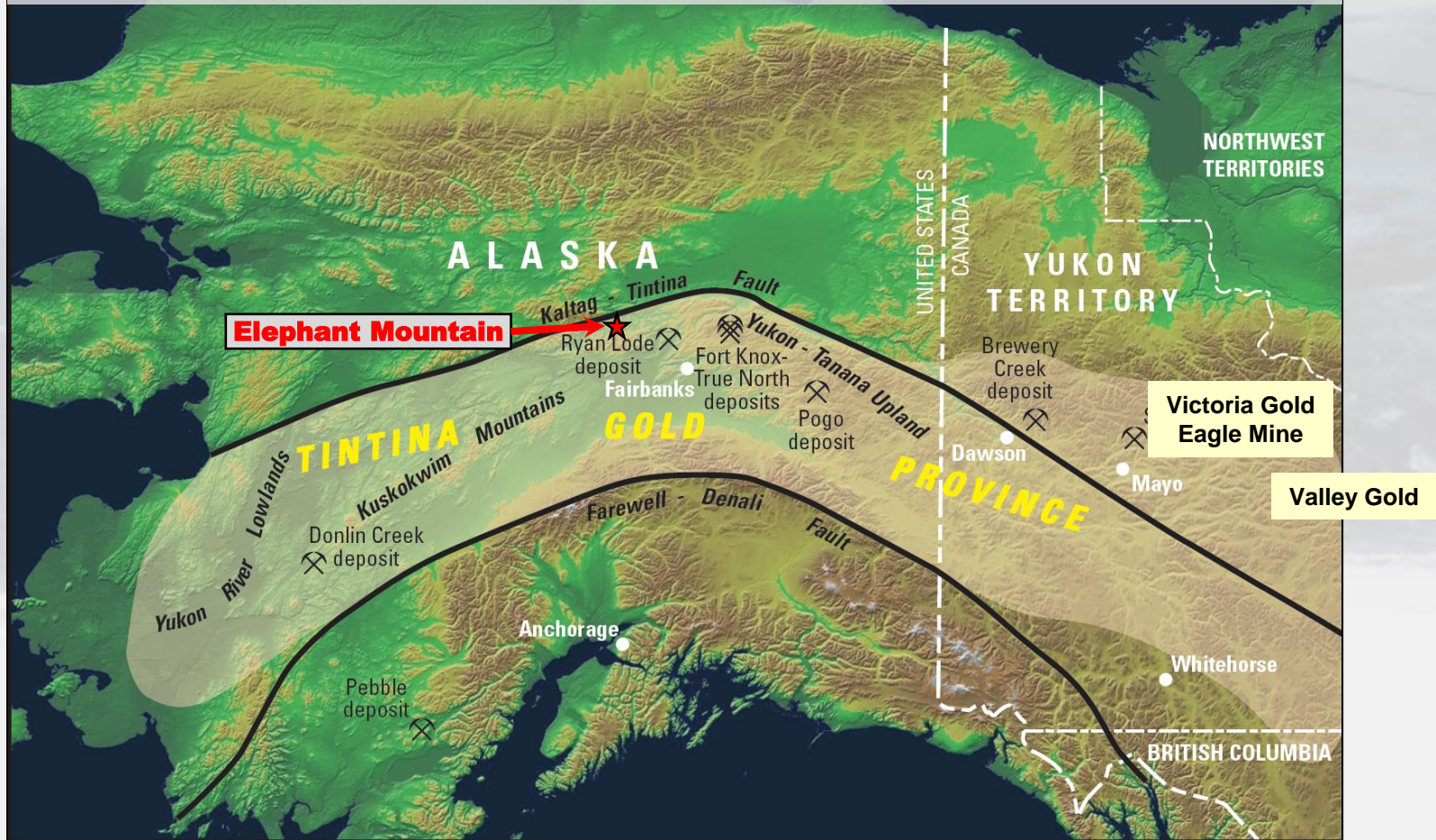
# ALASKA GOLD PROJECT





# Tombstone (Tintina) Gold Province - Alaska & Yukon

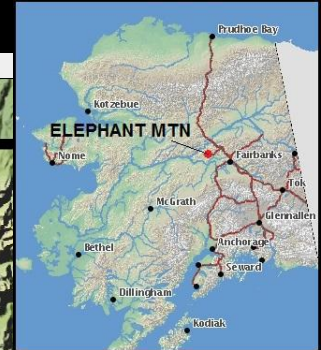
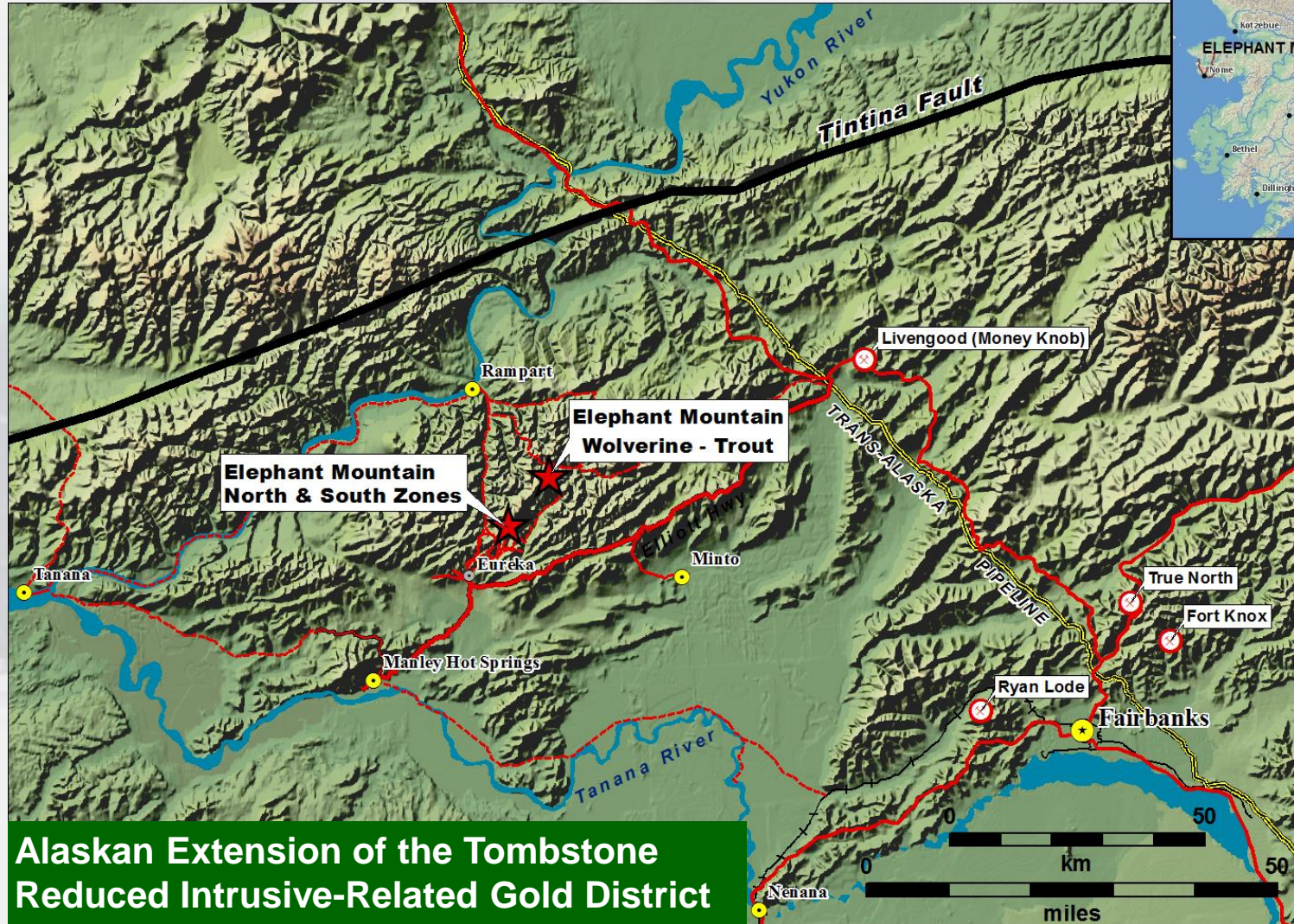
**Alaska ranks in the Top 5 in Fraser Institute's Investment Attractive Index**



Map source: USGS Fact Sheet 2007-3061

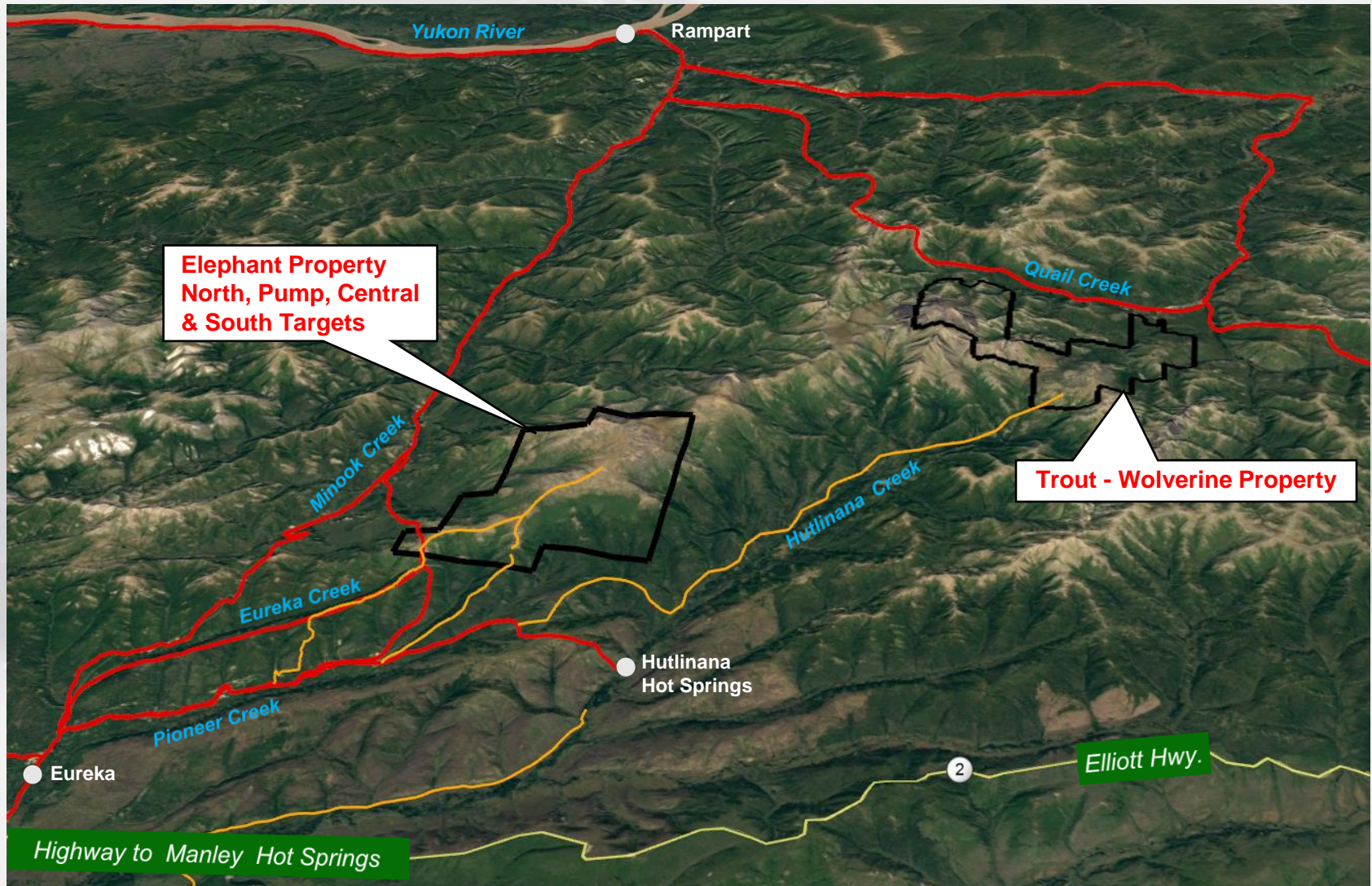


# Alaska Properties – Road Accessible





# Elephant Mountain Gold Project



# Elephant Mountain Gold Project

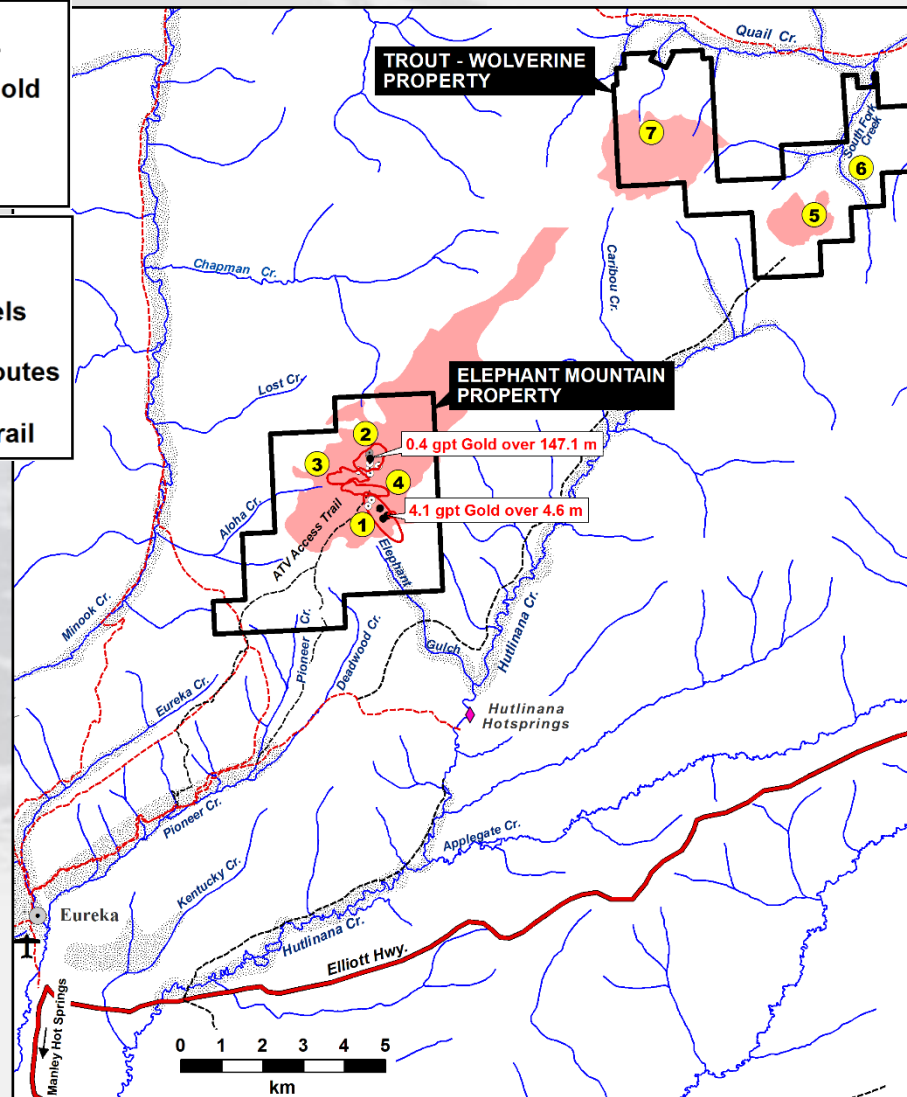
## DIAMOND DRILLING

- 2016 Endurance Gold
- 2000 North Star
- 1992 Placer Dome

- Cretaceous Intrusives
- Gold Bearing Placer Gravels
- State Approved Access Routes
- All Terrain Vehicle (ATV) Trail

## GOLD TARGETS

- ① South Zone
- ② North Zone
- ③ Pump Zone
- ④ Central Zone
- ⑤ Trout Peak
- ⑥ Trout South Fork
- ⑦ Wolverine Mtn.

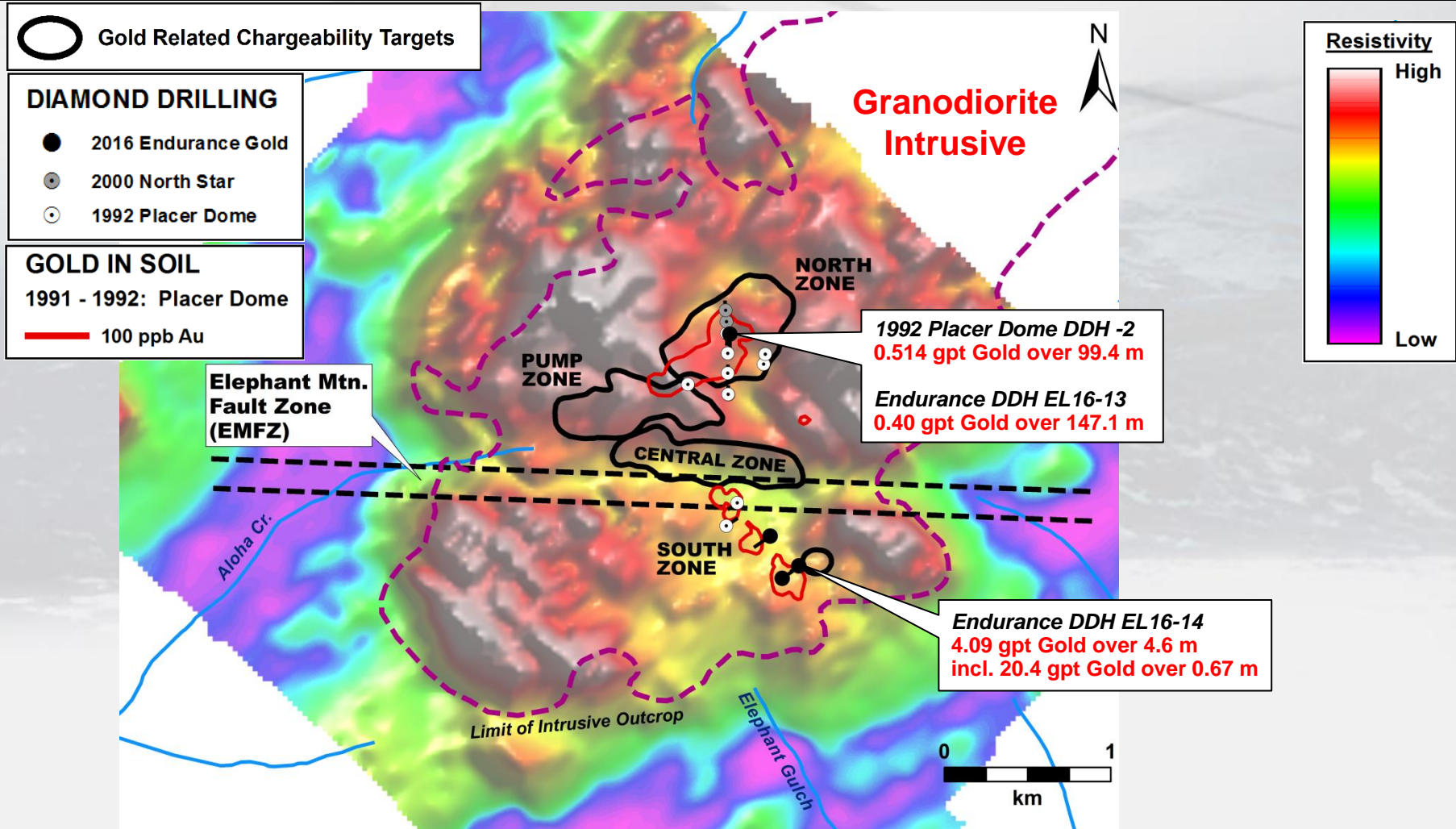




# Elephant Mountain Gold Project, Alaska

- Own 100% of Elephant Claims - Option to Earn 100% on Trout Claims
- Road and State trail accessible in Central Alaska. – Permitted for Drilling
- State Mining Claims – Central Alaska
- Target Similarity to Fort Knox AK, Golden Summit AK, Snowline, Eagle (Yukon)
- **Six** intrusive hosted gold target areas within a 12 x 5 km district **All zones are open to expansion through geochemical exploration**
- Drilling to date indicates a large 2 x 2 km gold mineralizing system straddling a wide intrusive-hosted fault zone with **4 targets**, 2 targets with wide low-grade gold and narrower high grade gold
- **South Zone Discovery** step - out drilling a high priority
- **North Zone, Pump Zone & Central Zone** chargeability targets warrant grid-drilling to discover higher grade feeder structures.
- **Trout Peak Target** a high priority for drilling
- **Trout South Fork** target warrants drilling

# Elephant Mountain Gold Project Airborne Geophysics – 7200 Hz. Resistivity



# Elephant Mountain Gold Project Intrusive Hosted - Induced Polarization Anomalies

SW

Looking West Northwest

NE

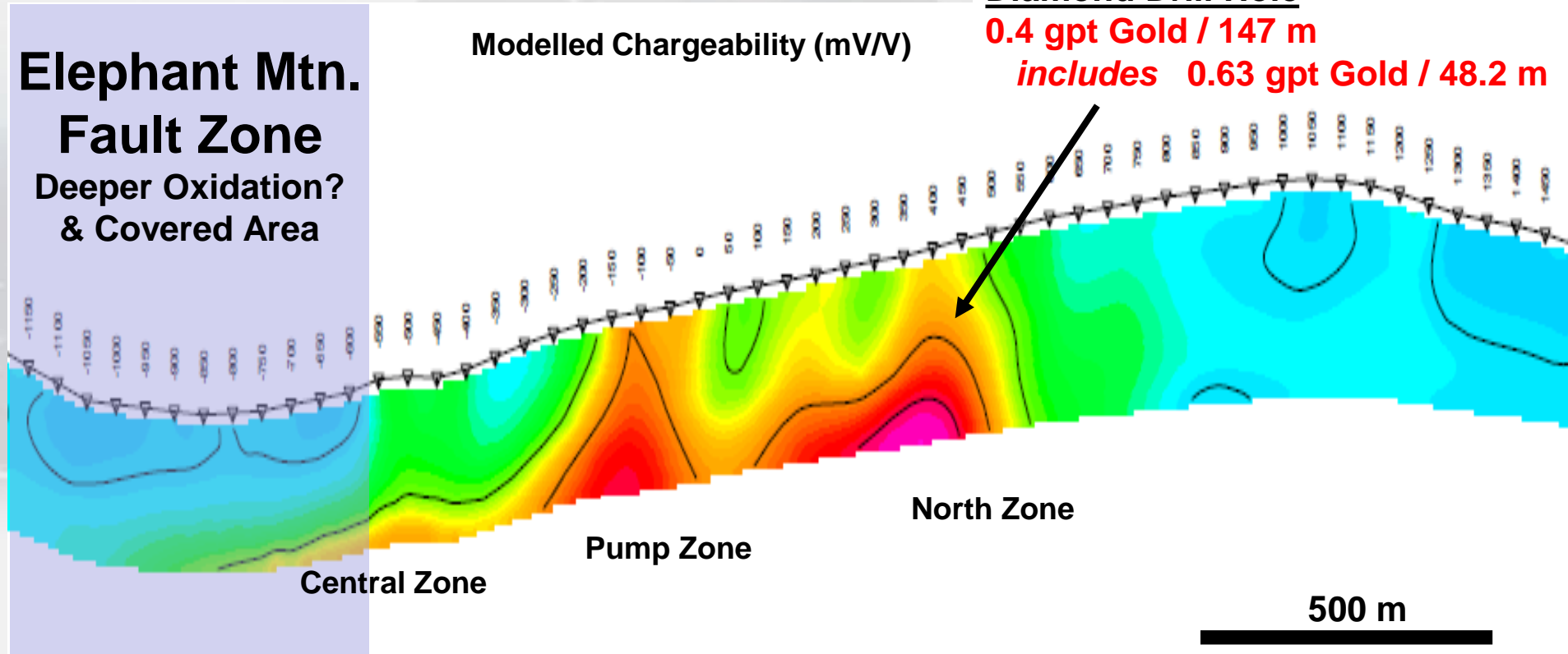
Diamond Drill Hole

**0.4 gpt Gold / 147 m**

**includes 0.63 gpt Gold / 48.2 m**

Modelled Chargeability (mV/V)

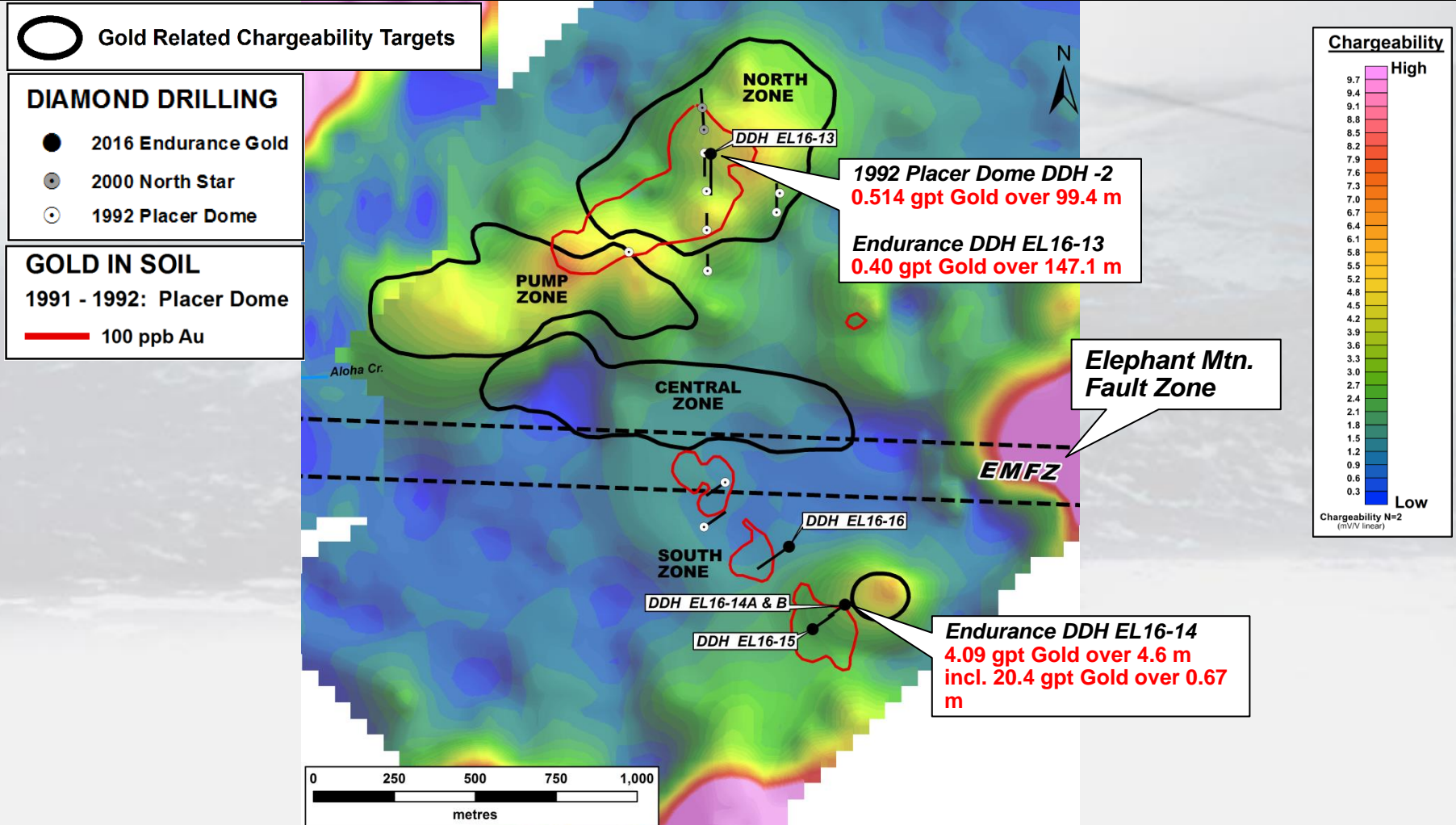
**Elephant Mtn.  
Fault Zone**  
Deeper Oxidation?  
& Covered Area



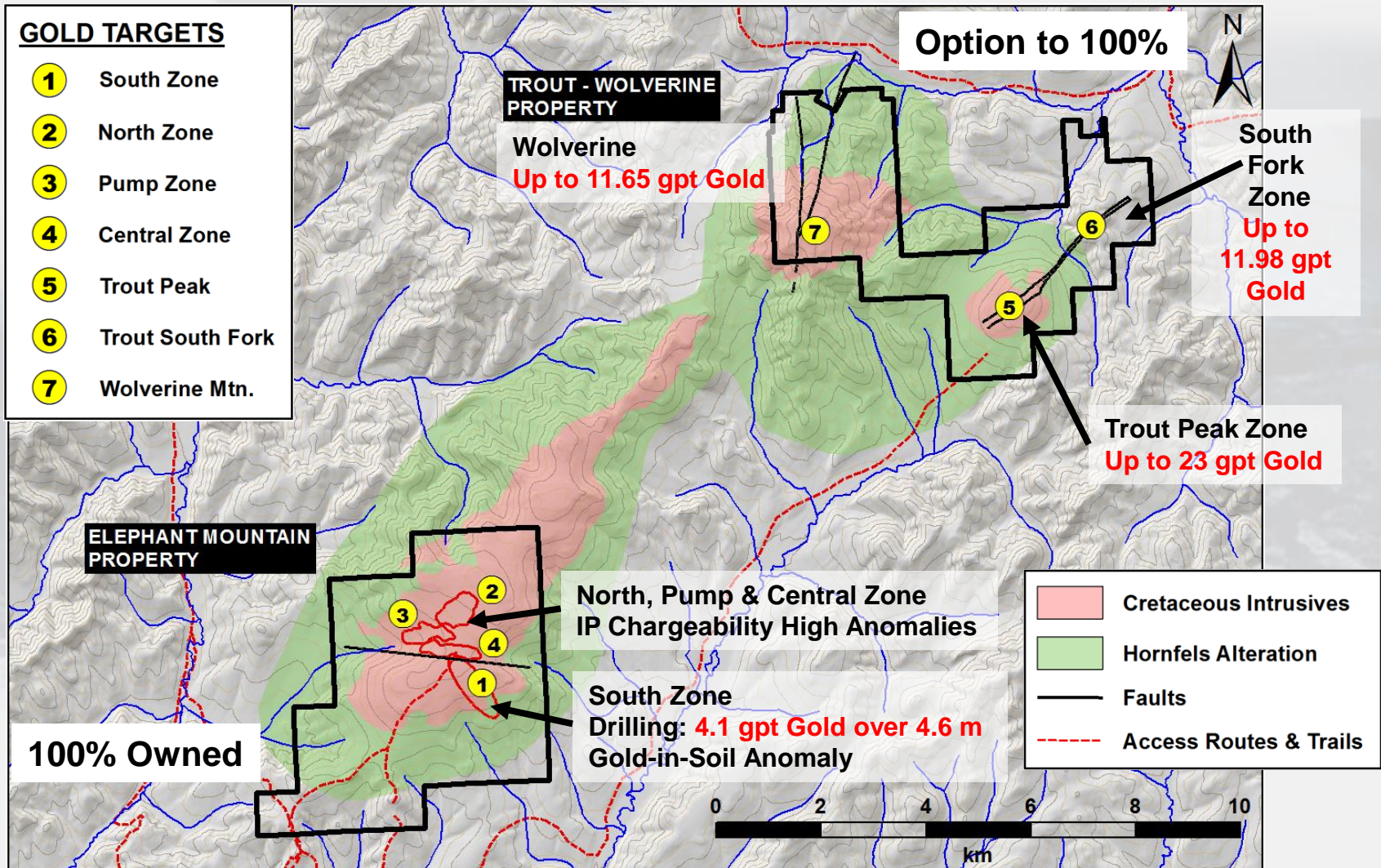


# Elephant Mountain Gold Project

## Chargeability (50m dipole) – N2



# Elephant Mountain Gold Project – Area Geology







# Elephant Mountain Gold Project

## Eureka – Manley Hot Springs District, Alaska

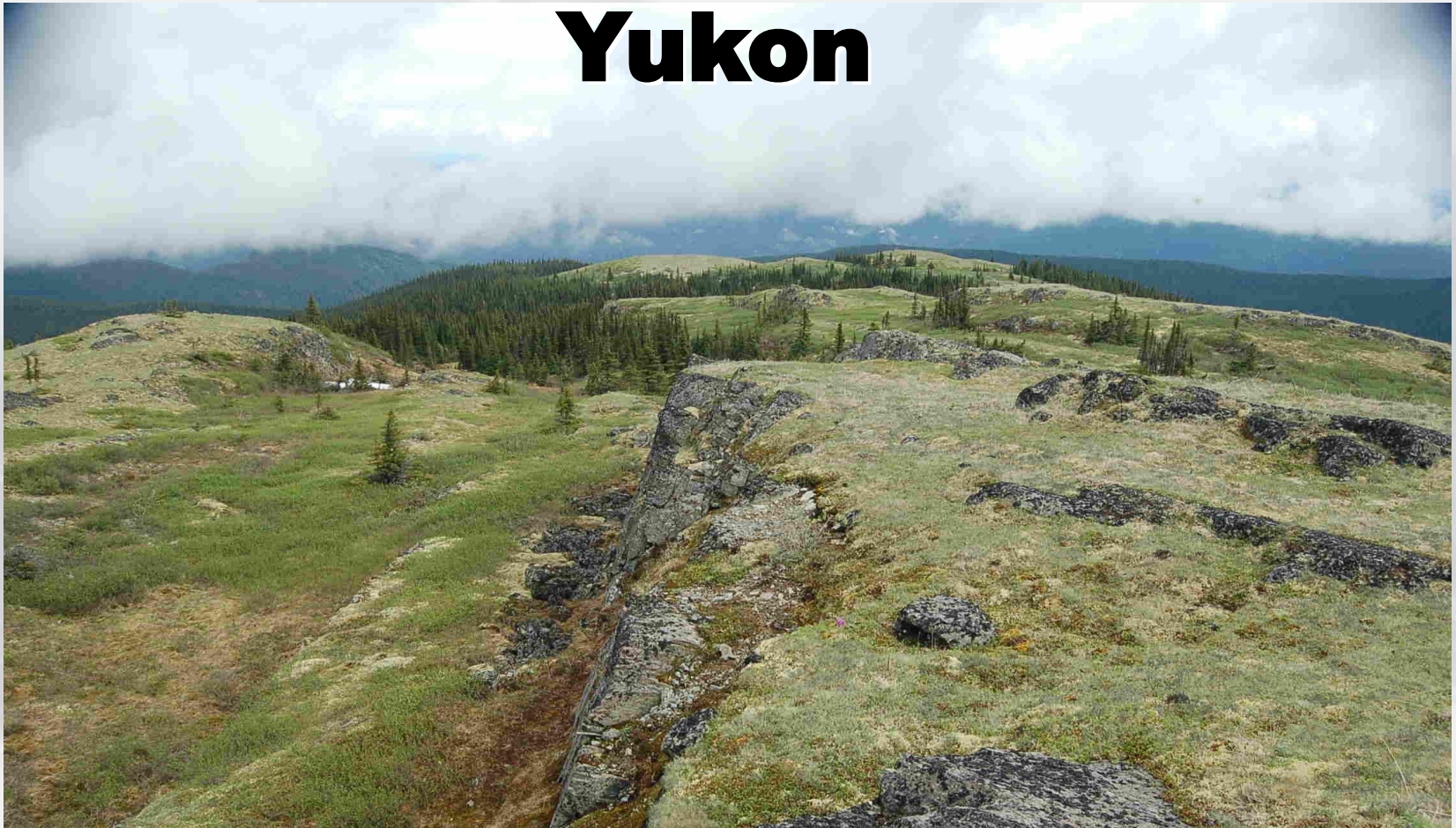
1. **Elephant Property** – 100% owned
2. **Trout - Wolverine Property** – Option to own 100%

Remaining obligation - US\$60,000 cash by Dec 2024

Both Properties subject to 1% NSR after buyout

# **BANDITO REE-Nb PROJECT**

## **Yukon**

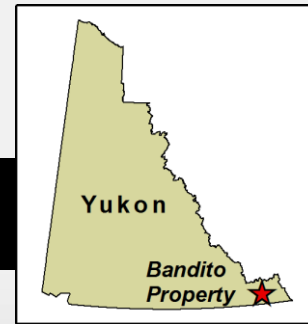


**100% Endurance Owned**  
**Rare Earth-Niobium-(Nickel-Copper) Target**

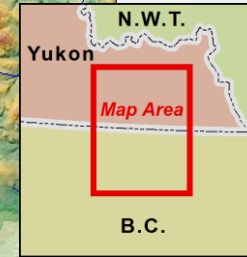
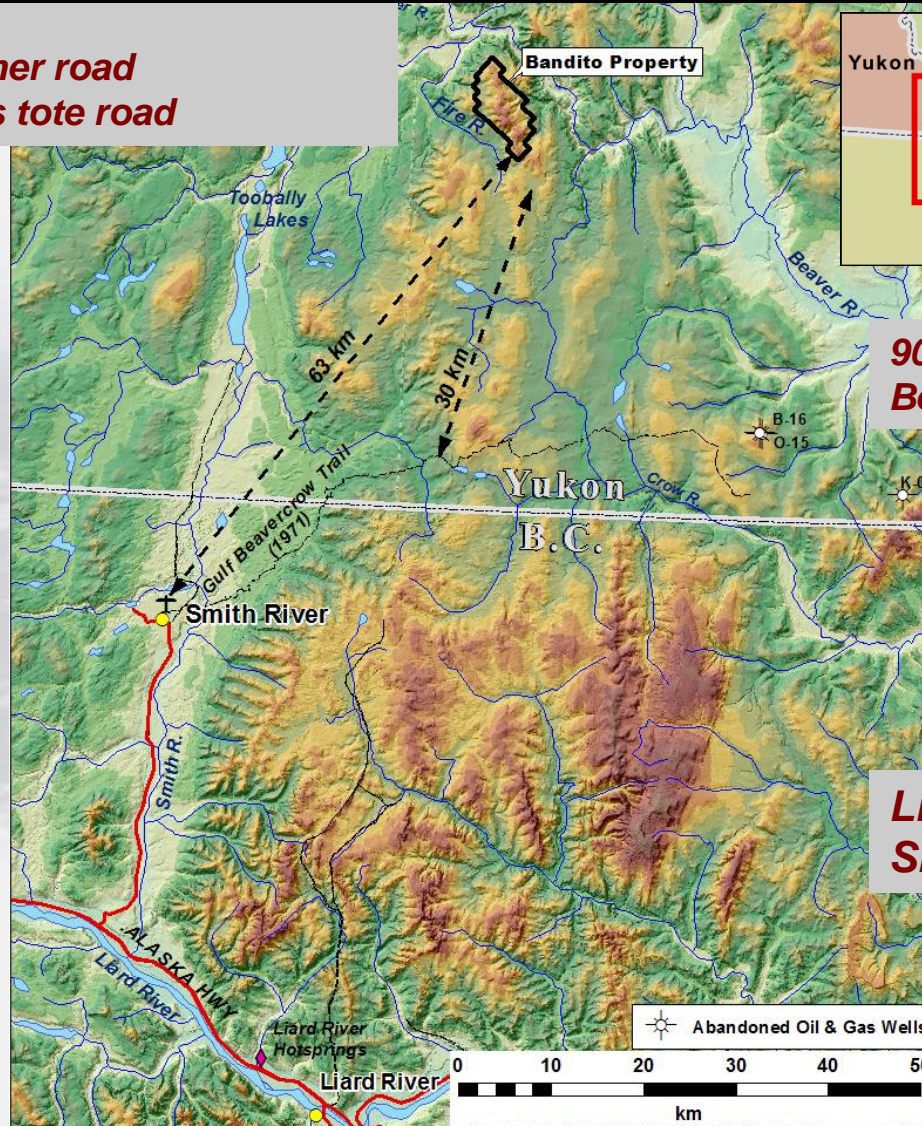


# Bandito Project, Yukon

## Location Map



**63 km from all weather road**  
**30 km from oil & gas tote road**

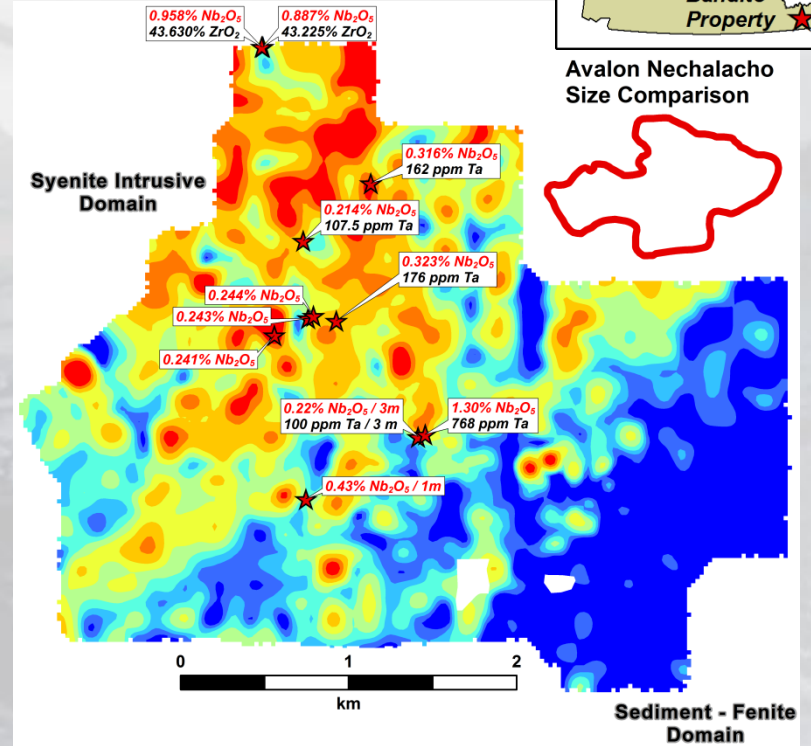
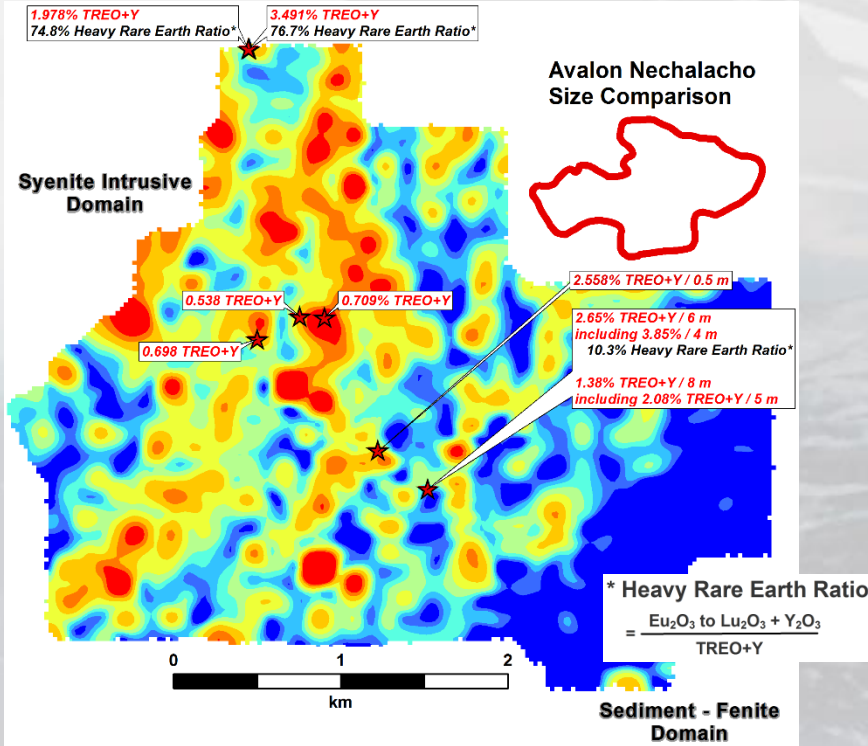
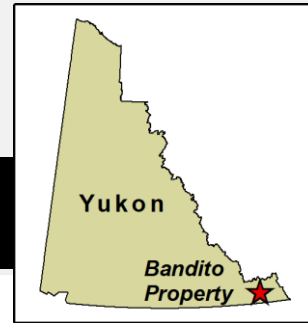


**90 kilometres to  
Beaver River gas wells**

**Liard River  
Shale Gas Basin**

# Bandito Project, Yukon

## Highlights REE & Niobium in Soil



### 2011 Soil Grid

Total REE & Yttrium

TREE+Y (ppm)	Percentile
600 - 3,534	> 95th
496 - 600	> 90th
389 - 496	> 80th
322 - 389	> 70th
280 - 322	> 60th
256 - 280	> 50th
233 - 256	> 40th
218 - 233	> 30th
40 - 218	< 30th

★ 2011 and 2012 Grab or Chip Sampling (% TREO+Y / metres)

**Large Rare Earth and Niobium Soil Anomalies related to High REE-Nb bedrock values in Syenite**

**Soil Grid Sample Density**  
 2011 Grid = 100 m x 100 m

**Niobium - Tantalum Statistical Correlation is 86.5%**

★ 2011 and 2012 Grab or Chip Sampling (% Nb<sub>2</sub>O<sub>5</sub> / metres)

### Niobium in Soil

Nb (ppm)	Percentile
196 - 575	> 95th
146 - 196	> 90th
96 - 146	> 80th
68 - 96	> 70th
50 - 68	> 60th
40 - 50	> 50th
34 - 40	> 40th
29 - 34	> 30th
5 - 29	< 30th

### Tantalum in Soil

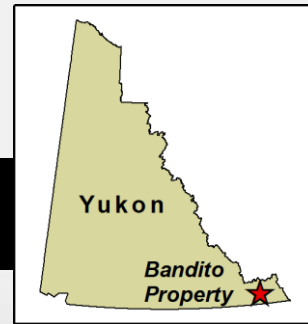
Ta (ppm)	Percentile
9.4 - 54	> 95th
6.9 - 9.4	> 90th
4.7 - 6.9	> 80th
3.4 - 4.7	> 70th
2.7 - 3.4	> 60th
2.3 - 2.7	> 50th
2.1 - 2.3	> 40th
1.8 - 2.1	> 30th
0.1 - 1.8	< 30th

**Soil Grid Sample Density**  
 2006 Grid = 50 m x 25 m  
 2011 Grid = 100 m x 100 m

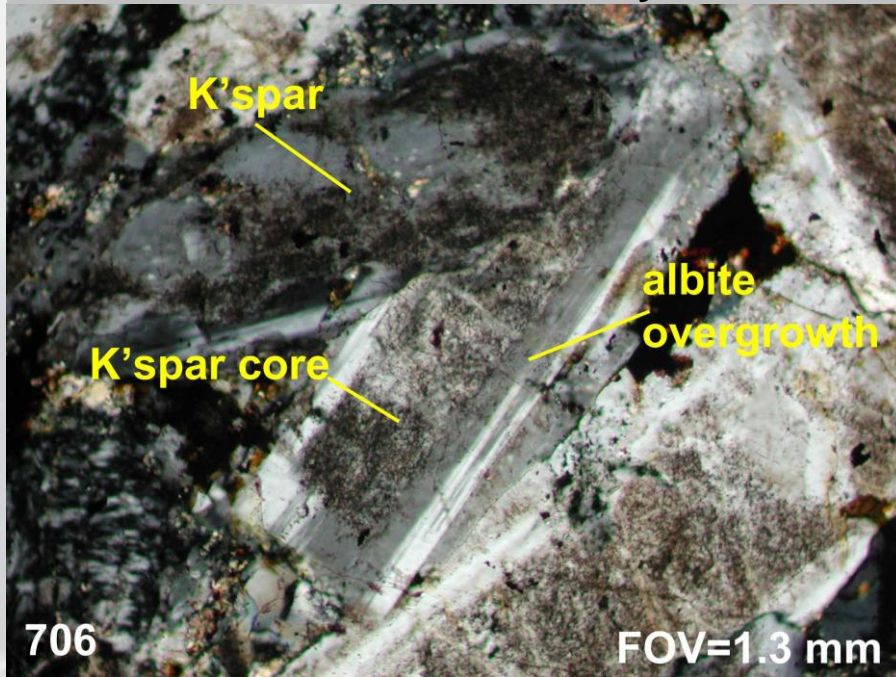


# Bandito Project, Yukon

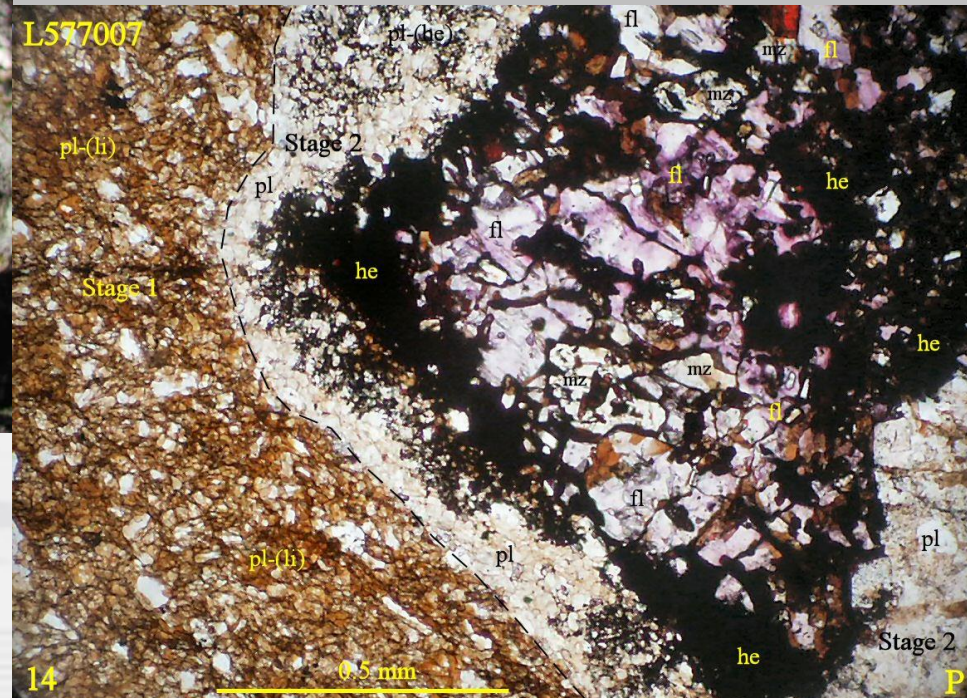
## Sodium and Potassium Metasomatism



Albite – potassium feldspar Fenite  
or fenitized intrusive dykes



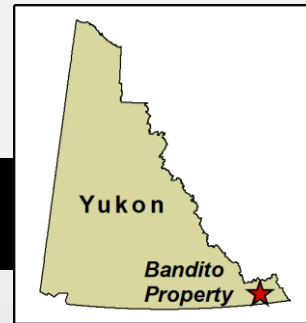
Multistage fluorite hematite monazite  
plagioclase Fenite



**Grabs up to 6.8% TREO**

# Bandito Project, Yukon

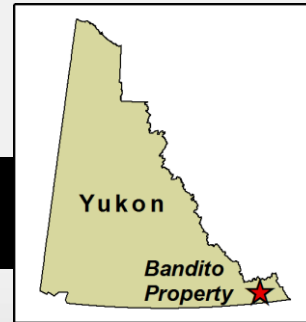
## Project Highlights



- 1. Drill Ready REE target** - 3.0 by 0.5 Km Rare Earth System in Fenite – 2.3% TREO+Y over 6 m with 10.8% Heavy Rare Earths in Fenite - plus consistently high niobium values in Fenite.
- 2. Drill Ready Nb-Ta targets** - Over 30 chip & grab samples contain in excess 0.143% Nb<sub>2</sub>O<sub>5</sub> with values up to 1.3% Nb<sub>2</sub>O<sub>5</sub> and 0.094% Ta<sub>2</sub>O<sub>5</sub> in syenite.
3. Up to 1.8 km by 600 m TREE+Y and Niobium-Tantalum soil anomalies in +4 square km altered “Red Syenite” together with values up to 3.49% TREO+Y with 76% Heavy Rare Earth and 0.96% Nb<sub>2</sub>O<sub>5</sub> indicate discovery potential for volumetrically large Syenite-Intrusive hosted REE-niobium-tantalum deposits.  
**Drill Ready after intensive prospecting and trenching.**
4. The alteration and “pregnant” rare metals system remains open to expansion within the current property.
5. The Copper-Nickel “Discovery” soil anomaly is 1000 by 600 m, much larger than the area of known mineralization (580 by 200 metres). **Drilling warranted.**



# Bandito Project, Yukon



## Next Steps

1. LiDAR Completed in 2022 – assist with defining lithological contacts, intrusive contacts
2. Airborne + Ground Geophysics – To define system size with radiometrics.
3. Additional soil & rock sampling – To define limits of the large intrusive-hosted rare earth, niobium, and tantalum system.
4. Yukon Class 1 Permit approved for 2023 – 2024 Renewal in Progress  
this permit allows some recon drilling
5. Class 3 Drill and Trench permit application under consideration.
6. Drilling – Several rare earth, niobium/tantalum and nickel-copper targets warrant drill testing.
7. Trenching – To identify controls and extent of rare earth and niobium-tantalum mineralization in intrusive-hosted and fenite targets.



**[www.endurancegold.com](http://www.endurancegold.com)**

*Robert T. Boyd, P.Geo. is a qualified person as defined in National Instrument 43-101 and supervised the compilation of the information forming the basis for this summary. Any historic data summarized in this presentation should not be relied upon.*

Suite 1212 – 666 Burrard Street  
Vancouver, BC V6C 2X9 Canada  
Toll Free Phone: 877-624-2237

EDG: TSX.V | ENGF: OTC Pink | Frankfurt: 3EG