



# North American Focused Gold Exploration Company

**July 2025**



EDG: TSX.V | ENDGF: OTCQB | Frankfurt: 3EG

## Corporate Disclosure

*The company is an exploration stage mineral resource exploration company and none of its mineral projects have yet to be proven to be economic. The contents of this presentation is for information purposes only and does not constitute an offer to sell or a solicitation to purchase any securities referred to herein.*

### **Forward-looking Statements**

*This presentation contains “forward-looking information” within the meaning of applicable Canadian securities regulations. All statements other than statements of historical fact herein, including, without limitation, statements regarding the company’s plans, goals or objectives and future exploration, development, potential mineralization, exploration results and future plans are forward-looking statements that involve various risks and uncertainties. There can be no assurance that such statements will prove to be accurate, and actual results and future events could differ materially from those anticipated in such statements. Readers are advised not to place an undue reliance on forward-looking statements.*

# Corporate Snapshot

<b>Shares Outstanding</b> <i>(June 30, 2025)</i>	176.3m
<b>Market Capitalization</b> <i>(C\$0.21 – June 30, 2025)</i>	C\$37.0 m
<b>Options</b> <i>(C\$0.20 – C\$0.34)</i>	10.1 m
<b>Warrants</b> <i>(C\$0.17 – C\$0.42)</i>	12.6 m
<b>Fully Diluted</b> <i>(Dec 31, 2024)</i>	200 m
<b>Working Capital</b> <i>(March 2025)</i>	C\$3.99 m*

*\* includes marketable securities*



**Insiders  
own  
over 60%**

## Key People

**Robert T. Boyd**  
*President, CEO & Director*

**Darren O'Brien**  
*Vice President Exploration*

**Teresa Cheng**  
*CFO & Corporate Secretary*

**Richard Gilliam**  
*Director*

**H. Ross Arnold**  
*Director*

**Robert Pease**  
*Director*

**J. Christopher Mitchell**  
*Director*

## Endurance Gold Corporation – Opportunities

**Endurance Gold – An Opportunity Generator with Pre-Existing Projects Divested for Cash, Shares, &/or Royalty such as:**

- **Rattlesnake Hills Au, WY – SOLD** to GFG Resources (TSX-V;GFG)
- **Pardo Paleoplacer Au, Ontario – SOLD** to Inventus Mining (TSX-V;IVS)

Current **100% controlled** Drill-Stage Projects in excellent jurisdictions are;

- **Elephant Mtn Gold Project**, Central Alaska – Tombstone Gold Belt - Intrusive Hosted Gold - 0.40 gpt Au over 147 m – 6 Large Targets - needs +\$2 Million drilling **FOR SALE or JOINT VENTURE**
- **Bandito Rare-Earth Niobium**, Yukon – Syenite Intrusive hosted - **HOLD**
- **Reliance Gold Project**, Gold Bridge BC – “Epizonal” Orogenic  
**The Exploration and Funding Focus for the Company**  
**SELF FUNDED**

# Endurance Gold Corporation – Core Gold Assets

## HIGHLIGHTS AND PLANS

**100% controlled - Drill-ready Gold Projects - top-ranked jurisdictions.**

### **Reliance Gold Project, B.C. – Epizonal Orogenic – 2025 Drilling**

- Next to a former +4 m ounce producer
- 25 km of DDH drilling completed – up to **15.7 gpt Gold over 28.4 m**
- **1.5 km +100 ppb** gold-in-soil - strong system strike potential
- **73 of 108 DDH** have significant intersections (>3.4 gpt Au over >3m)
- Maiden Open Pit Resource Expected in 2025

### **Elephant Mtn Project, Alaska – Intrusive Hosted Gold**

- Within the Yukon-Alaska Tombstone Gold Belt
- Six drill targets (kilometre scale) within an emerging 12 x 5 km district.
- Drill intersections such as **0.40 gpt Gold over 147 m** and **4.1 gpt Gold over 4.6 m**
- Permitted - Further drilling warranted

**AVAILABLE FOR JOINT VENTURE  
OR STRATEGIC ALTERNATIVE**



# Reliance Gold Project – Ideal Location

## Bralorne Orogenic Camp, Gold Bridge, B.C.

### New Surface Discovery

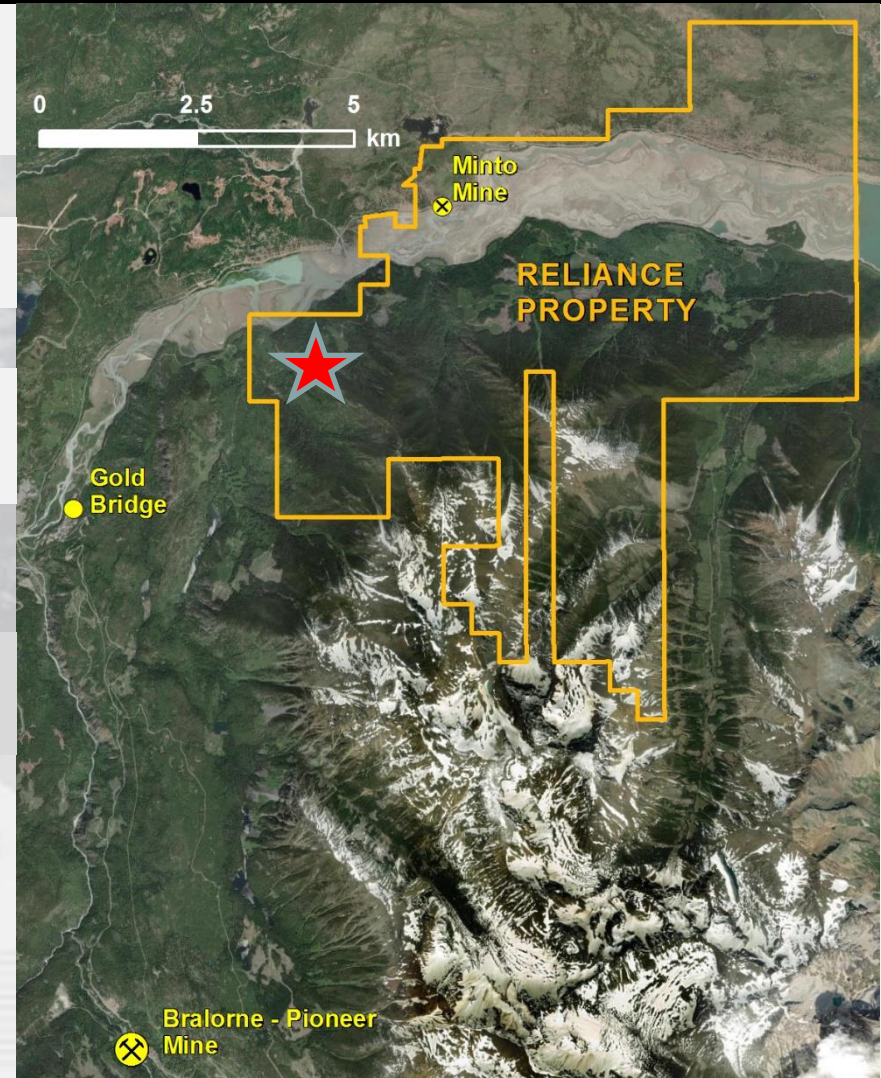
10 km from historic Bralorne Camp  
(+4 million ounces of historic production)



*4 hour Drive  
from Vancouver*

*5 km from  
La Joie Hydro  
Dam*

  
**Imperial and  
Eagle Zones**

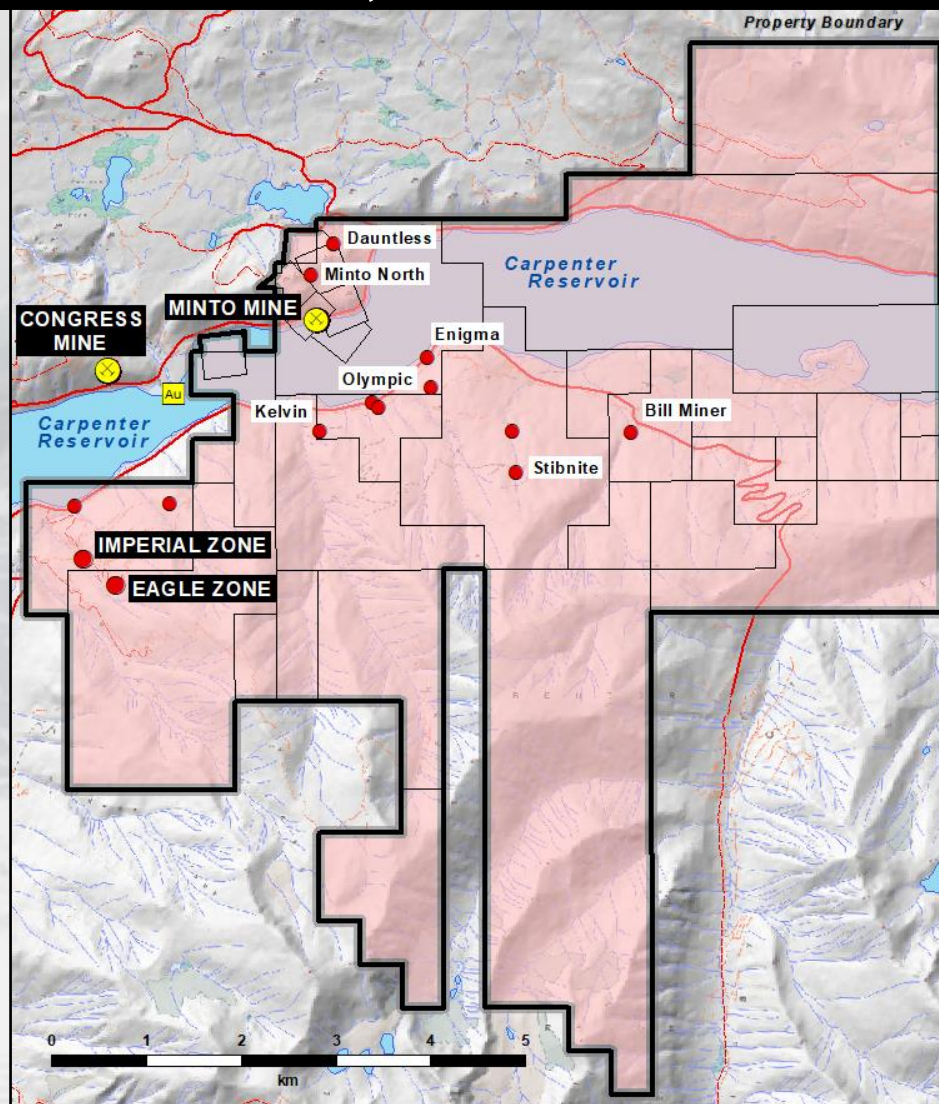
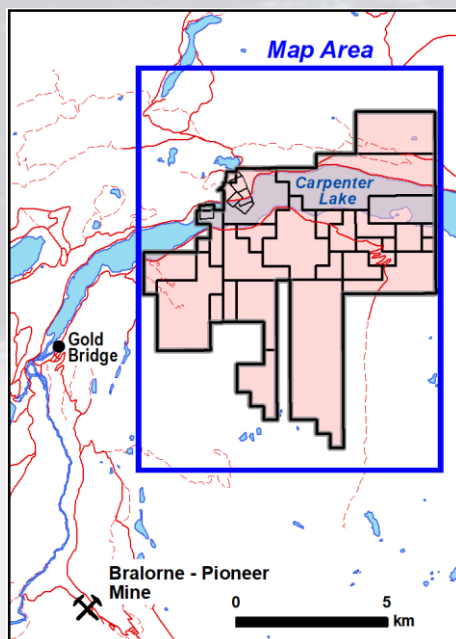




# Reliance Gold Project, BC 100% Owned – 5,505 Hectares

**District Consolidation of  
Historic & Accessible  
Gold & Antimony  
Prospects**

**A “Shallow” Orogenic  
Setting**



## Reliance Gold Project 2024 Program Highlights

**25 km of diamond drilling** has delivered a significant high-grade gold discovery in a easily accessible productive Gold Camp

Gold deposit now over **1.5 km of trend and 1.1 km vertically** – Excellent hit statistics

2024 Drilling confirms Eagle and Imperial are the same structural envelope with Crown intersections of **7.61 gpt gold over 5.7 m & 147 gpt gold over 1 m**

2024 Drill Discovery of the Lower Imperial with **7.18 gpt Gold over 8.3 m** – new “wide open” parallel structure & the deepest gold intersection to date

2024 Surficial Anomaly indicates additional 500 m potential to the SE of Eagle.

**Finalized 100% ownership** in 2024 – maximum 1% NSR after optional buydown

Sunk Project Costs **total \$10.1 million** after Tax Credits - low unit discovery metrics?



## Reliance Gold Project - 2025 Goals

**7,000 m Diamond Drilling  
Royal Shear (Imperial to Eagle)**

**2025 Goal**

Infill, Expand & 3D model for Conceptual OP  
Expand 2024 Lower Imperial Discovery  
Expand Royal Shear to Depth for UG Future

**Maiden Mineral Resource**

**2025 Goal**

Inaugural open pit resource

**Representative Metallurgy**

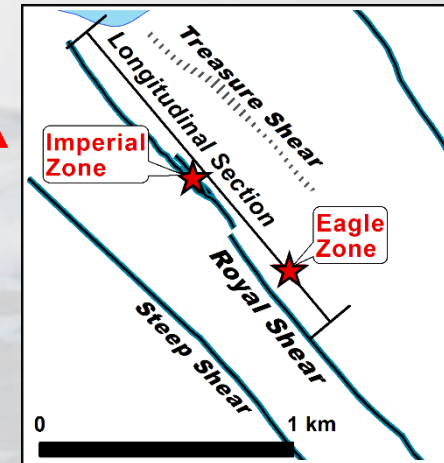
**2025 Goal**

Demonstrate ability to consistently deliver  
high grade gold concentrate

**New Discovery Growth**

**2025 Goal**

Advance SE Surface Discovery to Drilling  
Acquire Permit for Olympic Drilling  
New Olympic Target Definition



# Reliance Gold Project, BC – 2021 to 2024 DDH Statistics

1. Completed **108 Diamond** Drill Holes between 2021 to 2024
2. Majority of Drill holes at the **Eagle Area – SIGNIFICANT DISCOVERY**
  - 15.7 gpt Gold over 24.8 m including 26.96 gpt Gold over 4.1 m
  - 8.62 gpt Gold over 24.4 m including 17.02 gpt Gold over 4.3 m
  - 8.41 gpt Gold over 12.0 m, 8.05 gpt Gold over 13.0 m
  - 6.51 gpt Gold over 14.0 m, including 36.3 gpt Gold over 1.0
  - 6.20 gpt Gold over 7.8 m, including 10.70 gpt Gold over 2.6 m
  - 5.15 gpt Gold over 21.6 m, including 9.97 gpt Gold over 5.9 m
  - 3.05 gpt Gold / 139.9 m, 4.16 gpt Gold / 30.0 m, 5.8 gpt Gold / 23 m
3. 18 DDH at **Imperial & NEW Lower Imperial Zones** – majority mineralized
  - 8.47 gpt Gold over 24.9 m including 16.27 gpt Gold over 10.5 m
  - 8.98 gpt Gold over 9.3 m including 12.44 gpt Gold over 6.0 m
  - 17.28 gpt Gold over 4.2 m including 35.20 gpt Gold over 1.3 m
  - 7.18 gpt Gold over 8.3 m including 28.08 gpt Gold over 1.7 m
4. Crown and Lower Crown Discovered in 2024 – Visible Gold areas
5. **73 of 108 DDH** have “significant” intersections
6. **19 of 108 DDH** have “excellent” drill intersections



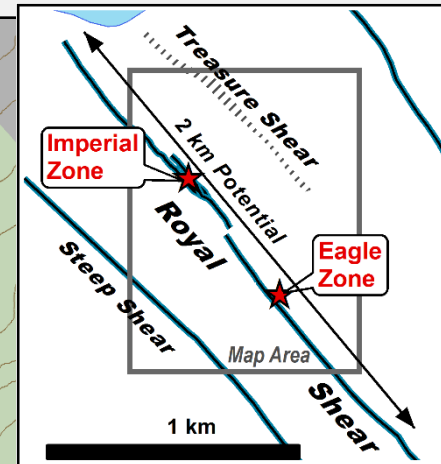
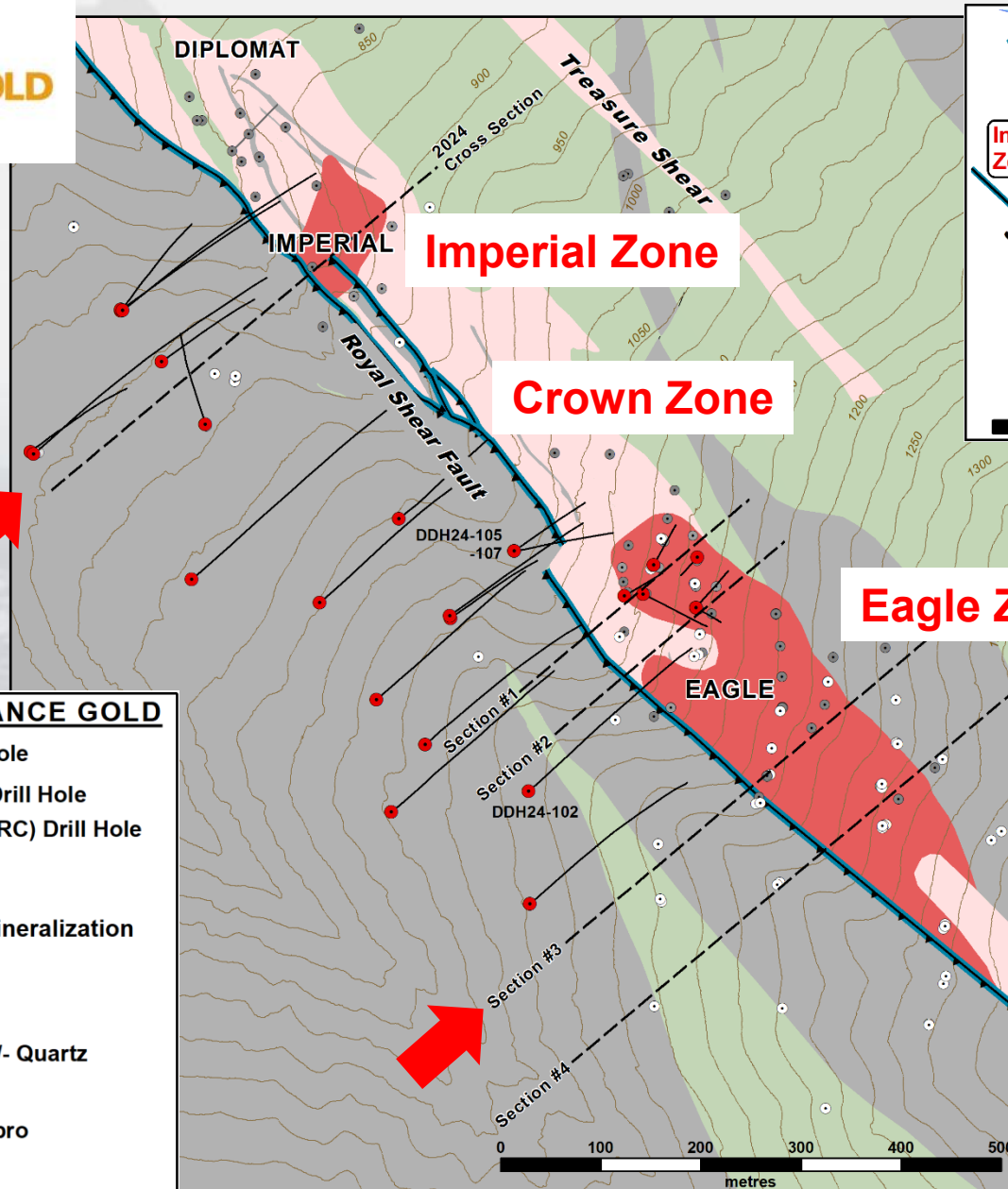
## Reliance Gold Project, B.C. Best Diamond Drill Holes 2021 to 2024

<u>Zone &amp; DDH</u>	<u>From</u>		<u>Au g/t / Metre</u>
Eagle - 22-058	32.1		3.05 gpt / 139.9m
Eagle - 21-020	33.3		15.70 gpt / 24.8m
Imperial - 21-009	161.0		8.47 gpt / 24.9m
Eagle - 21-006	25.6		8.62 gpt / 24.4m
Crown - 24-093	159.9		74.29 gpt / 2.0m
Eagle - 23-076	9.3		5.80 gpt / 23.0m
Eagle - 22-027	109.2		4.16 gpt / 30.0m
Eagle - 24-100	9.9		5.15 gpt / 21.6m
Eagle - 22-026	80.4		8.06 gpt / 13.5m
Eagle - 22-024	27.0		8.41 gpt / 12.0m
Eagle - 22-036	35.4		7.65 gpt / 12.7m
Eagle - 24-104	7.0		6.51 gpt / 14.0m
Eagle - 22-031	124.9		7.58 gpt / 11.9m
Eagle - 22-045	35.1		7.31 gpt / 11.6m
Eagle - 21-004	1.0		4.44 gpt / 19.0m
Imperial - 23-065	212.8		8.98 gpt / 9.3m
Eagle - 22-028	97.0		2.59 gpt / 31.6m
Imperial - 23-066	306.5		17.28 gpt / 4.2m
Imperial - 24-106	608.3	NEW Lower Imperial Discovery	4.47 gpt / 15.3m

Ranking- First 2025 DDH

# Reliance Gold Project

## Royal Shear Geology & Cross Sections



### DRILLING BY ENDURANCE GOLD

- 2024 Diamond Drill Hole
- 2021-2023 Diamond Drill Hole
- Reverse Circulation (RC) Drill Hole

### MINERALIZATION

- Surface Exposed Mineralization

### GEOLOGY

#### ALTERATION

- Ankerite Alteration +/- Quartz

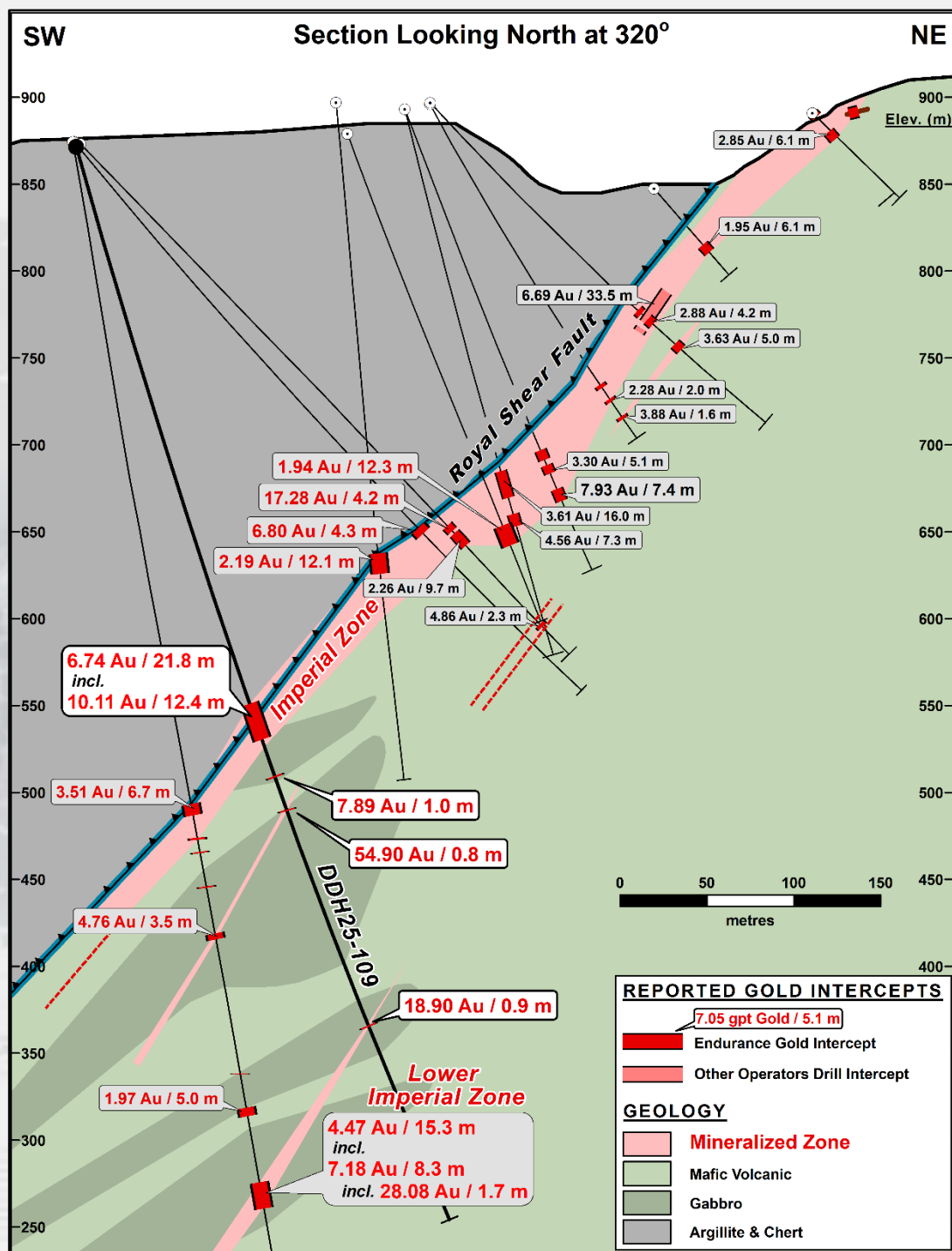
#### ROCK TYPE

- Mafic Volcanic / Gabbro
- Argillite and Chert

# Reliance Gold Project

## Imperial Zone

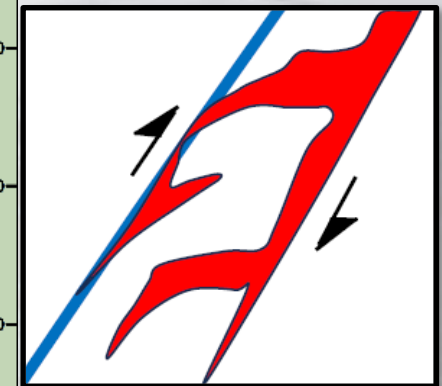
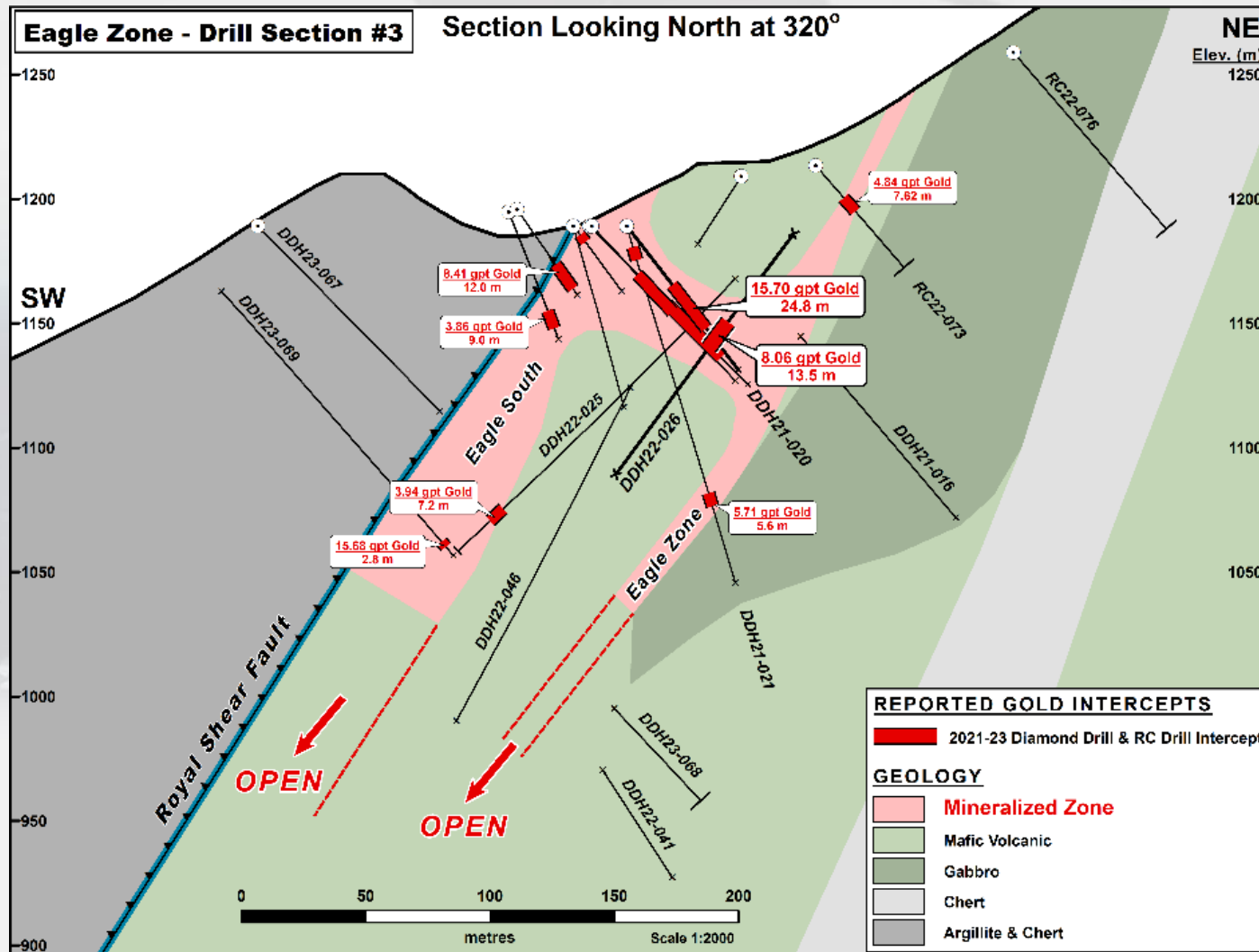
### 2025 Drill Cross-Section DDH25-109





# Reliance Gold Project

## Eagle Cross Sections #3 – (700 M south of Imperial)



Reliance Interpretation  
at Eagle Zone  
(Rhys 2024)

# Reliance Gold Project – Antimony Compilation

## 10.1 m width, 4.55 gpt Gold & 0.20% Antimony

Weighted Average of 199 DDH, RC & Channel Composites

### Best Assay Composites with Antimony (2020 to 2024)

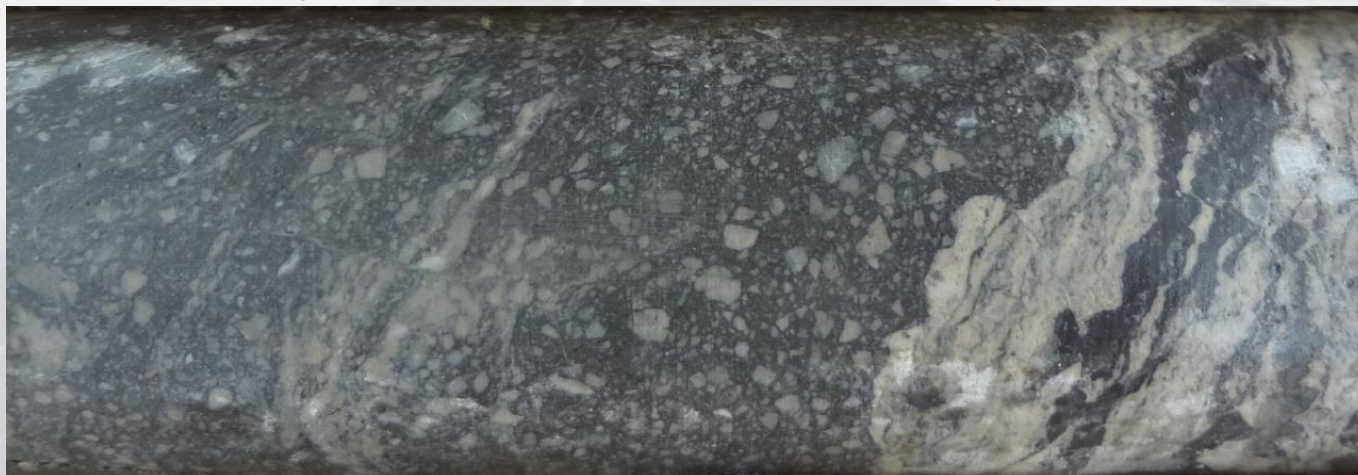
Hole / Roadcut ID	From (m)	To (m)	Length (m)	Au (gpt)	Antimony %	AuEQ (gpt)	Type
2020 Eagle1	61.3	101.8	40.5	4.98	0.54	6.14	Surface Channels
2022 EG07-01	34.0	42.0	8.0	6.35	1.49	9.57	Surface Channels
DDH21-003	0.8	17.8	17.0	4.87	0.51	5.96	DDH
DDH21-020	33.3	58.1	24.8	15.70	0.45	16.66	DDH
DDH22-036	35.4	48.1	12.7	7.65	0.48	8.69	DDH
DDH23-076	9.3	22.0	12.7	8.52	0.39	9.36	DDH
DDH24-091	370.5	371.0	0.5	2.16	19.20	43.50	DDH
DDH24-104	7.0	21.0	14.0	6.51	0.35	7.26	DDH
RC20-014	0.0	18.3	18.3	4.46	0.54	5.63	RC
RC20-015	0.0	16.8	16.8	7.39	0.46	8.37	RC
RC21-037	19.8	44.2	24.4	4.88	0.36	5.66	RC
RC22-062	44.2	82.3	38.1	5.40	0.26	5.95	RC

*Composites are reported over a drill length with a 1.0 gpt gold-equivalent (“AuEQ”) cut-off.*

*AuEQ calculated using commodity prices of US\$2,600/oz Au and US\$18,000/tonne antimony.*

## Reliance Gold Project Mineralized Breccia Textures

Gold - Arsenopyrite Quartz Breccia (Cataclastite) **6.19 gpt Gold over 0.85 m**



DDH22-027  
@ 116.4m

Fine grained “crushed”  
pyrite, aspy, stibnite with  
fine grained quartz  
breccia fragments &  
late ankerite veins

Gold - Arsenopyrite “Cockade or Coxcomb” Quartz Breccia **14.35 gpt Au /2.0 m**



DDH22-031  
@ 128 m

late phase of “open space”  
cockade quartz with  
stibnite, aspy, pyrite  
infilling mineralized altered  
mafic volcanic fragments



# Reliance Gold Project Imperial Zone DDH25-109

From	To	Length	Sample Number	Au_USE g/t	Ag_USE ppm	Sb_USE ppm
332.5	333.6	1.1	L644809	0.001	0.03	1.7
333.6	335	1.4	L644811	0.015	0.14	25
335	336	1	L644812	0.064	0.19	11.5
336	336.6	0.6	L644813	3.3	1.16	123.5
336.6	338	1.4	L644814	0.009	0.08	14
338	339.3	1.3	L644815	0.106	0.22	49.5
339.3	340.4	1.1	L644816	5.79	2.78	216
340.4	342	1.6	L644817	8.58	6.62	873
342	343.7	1.7	L644818	12.85	12.2	528
343.7	344.5	0.8	L644819	14.1	5.17	206
344.5	345.5	1	L644821	9.7	4.6	800
345.5	346.5	1	L644822	9.64	8.01	1105
346.5	347.3	0.8	L644823	6.06	12.05	8610
347.3	348	0.7	L644824	0.905	1.76	800
348	349.8	1.8	L644825	13.95	9.34	10400
349.8	350.7	0.9	L644826	6.62	4.01	298
350.7	351.7	1	L644827	16.25	4.4	327
351.7	353	1.3	L644828	2.38	0.91	137.5
353	355	2	L644829	0.056	0.16	23.8
355	356.3	1.3	L644831	0.449	0.44	51.7
356.3	357.8	1.5	L644832	10.5	4.43	2710
357.8	359	1.2	L644833	0.023	0.64	64.4
359	359.9	0.9	L644834	0.017	0.33	13
359.9	361	1.1	L644835	0.005	0.33	9.86
379	380	1	L644836	0.005	0.02	7.74
380	381	1	L644837	7.89	0.41	241
381	382	1	L644838	0.027	0.02	20.3

**6.74 gpt Au  
& 0.16% Sb  
over 21.8 m**

**Includes  
10.11 gpt Au  
& 0.25% Sb  
over 12.4 m**

## Reliance Gold Project

### Upper Crown Discovery in DDH24-093

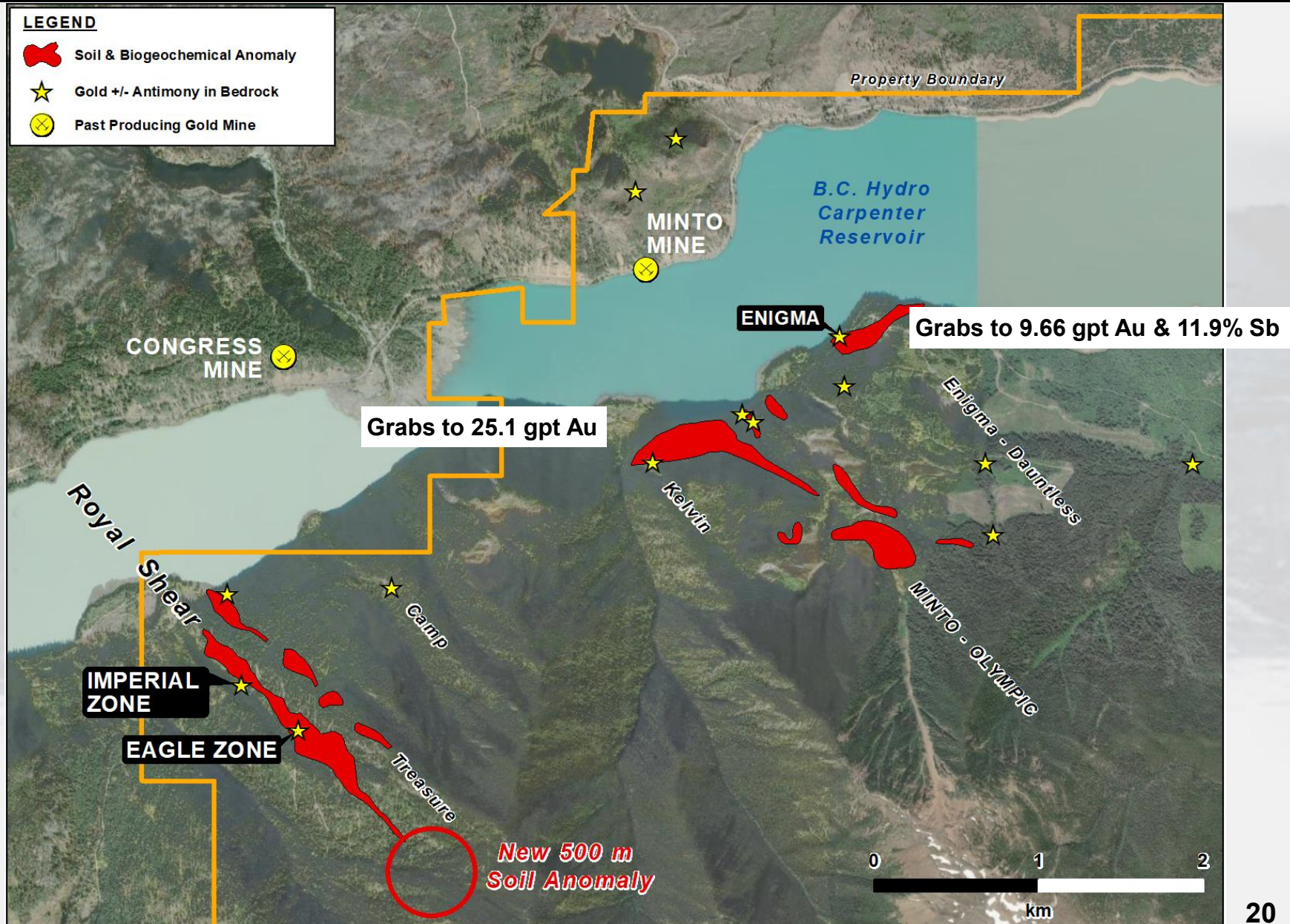
NQ Core **Visible gold** in Quartz Vein – **147.5 gpt gold / 1.0 m**





# Reliance Gold Project, B.C.

## Eagle, Imperial & the Olympic Geochemical Anomalies





## Reliance Gold Project, BC Conclusions

- An outstanding New Exploration Discovery in an historically productive multi-million ounce Orogenic Gold Camp.
- Wide pervasive iron-carbonate sericite alteration, sulphidization, breccia, and antimony indicate an “Epizonal” Orogenic setting in a “brittle” structural regime – Epizonal comparables to Fosterville, Australia and Newfoundland discoveries.
- Model provides potential for a major gold system with depth continuity.
- Drilling has delivered a high percentage of significant and excellent gold intersections with associated antimony.
- Deposit extends **1.5 km laterally X 1.1 km vertically**. Eagle, Crown & Imperial confirmed as continuous structural regime
- New 2024 Discoveries at **Lower Crown** and **Lower Imperial** Zones. Expand system potential
- New parallel surficial structural trends developing as high priority drill targets

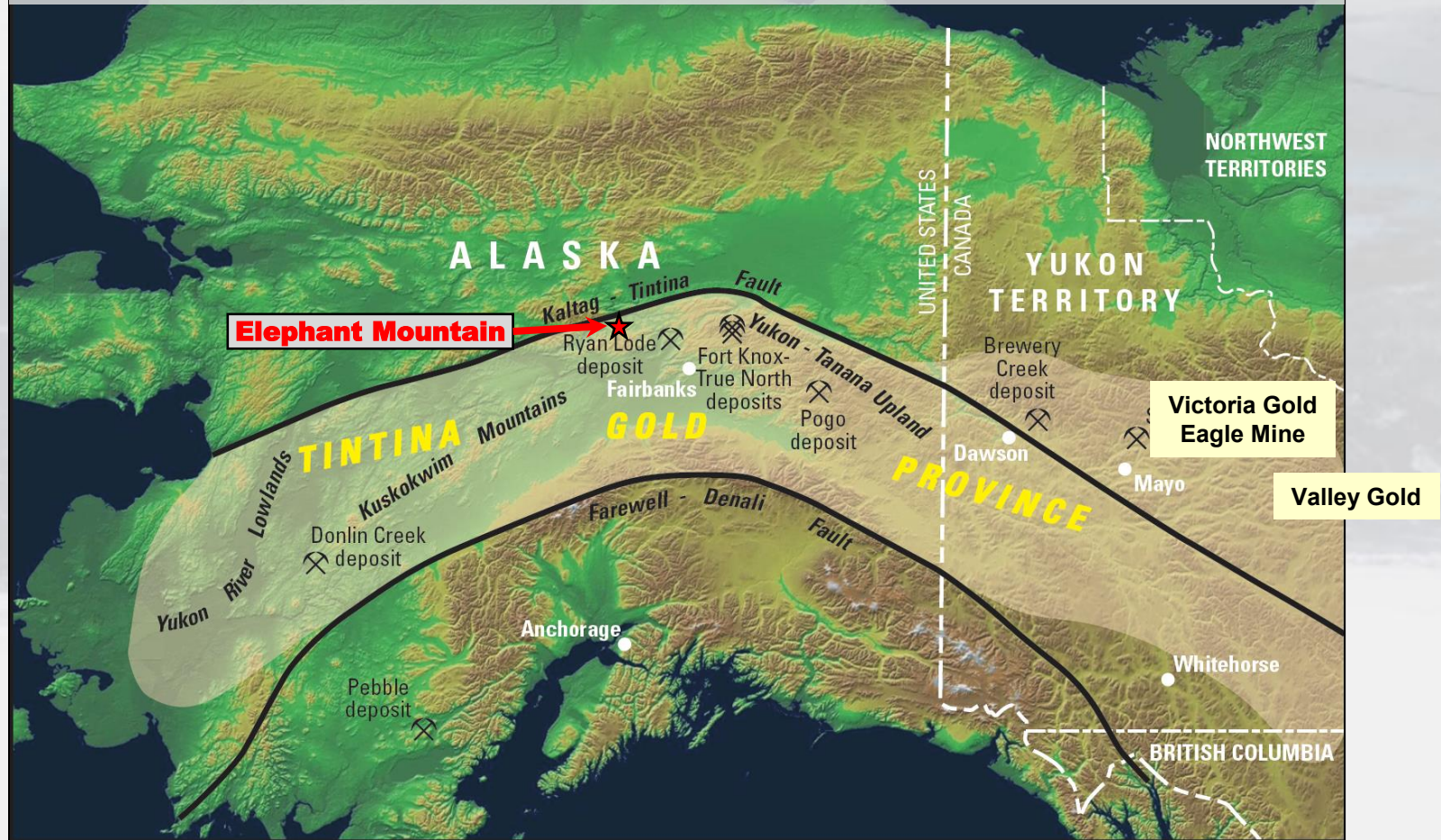
# ALASKA GOLD PROJECT





# Tombstone (Tintina) Gold Province - Alaska & Yukon

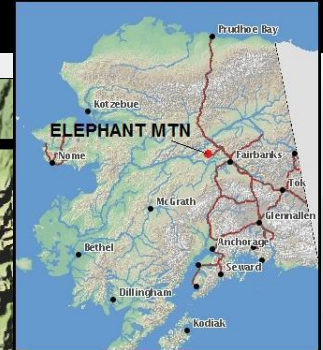
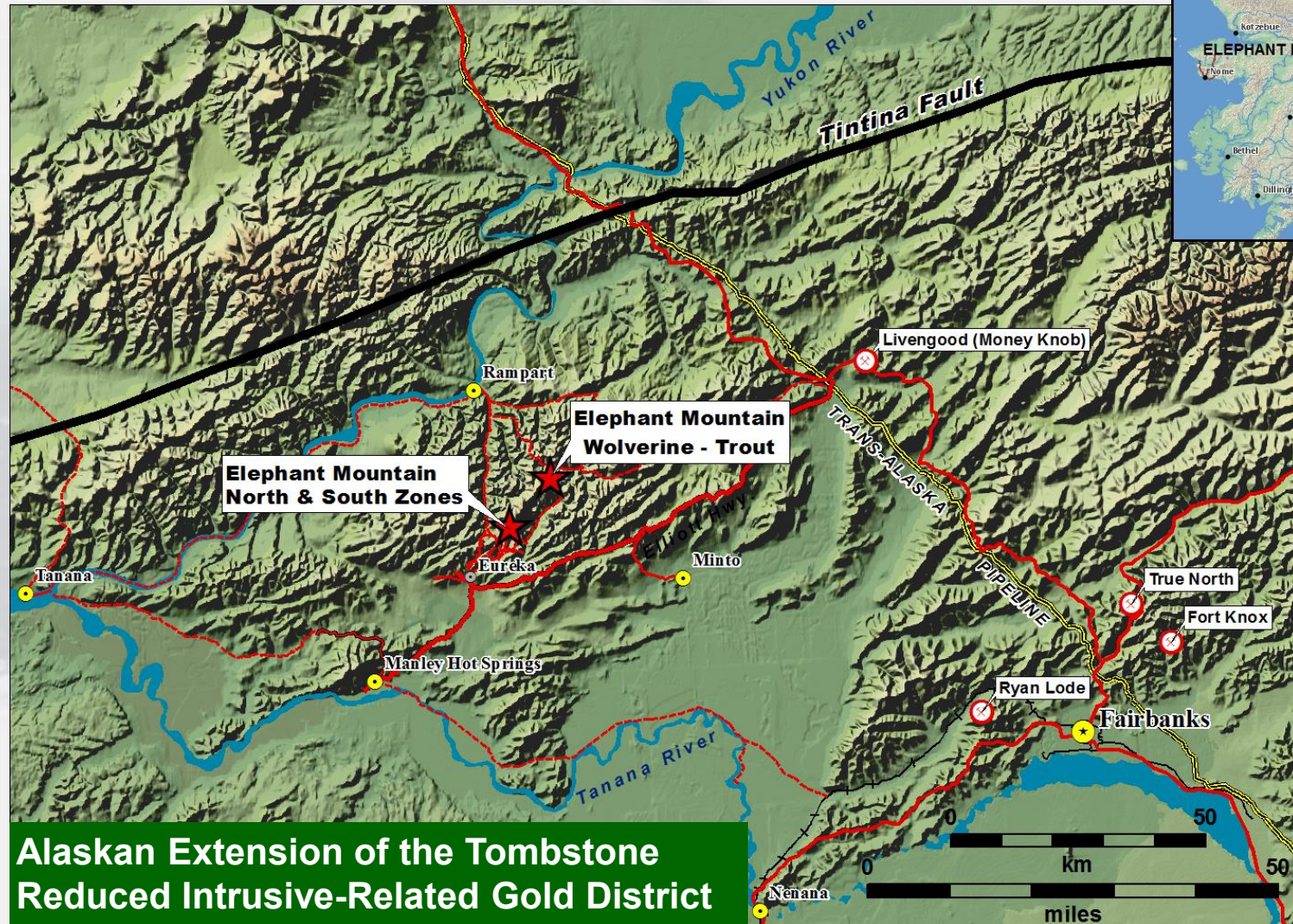
**Alaska ranks in the Top 5 in Fraser Institute's Investment Attractive Index**



Map source: USGS Fact Sheet 2007-3061

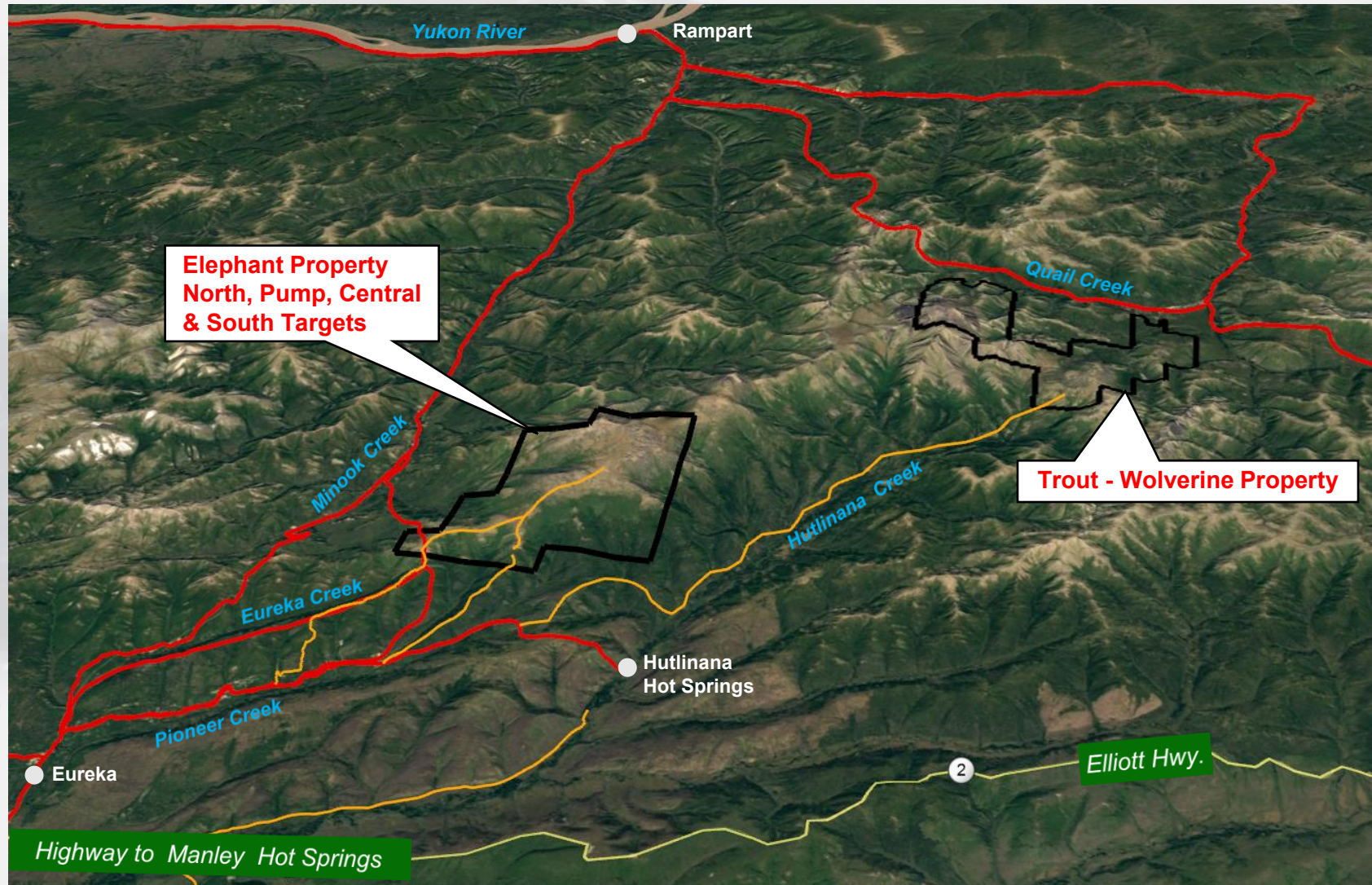


# Alaska Properties – Road Accessible

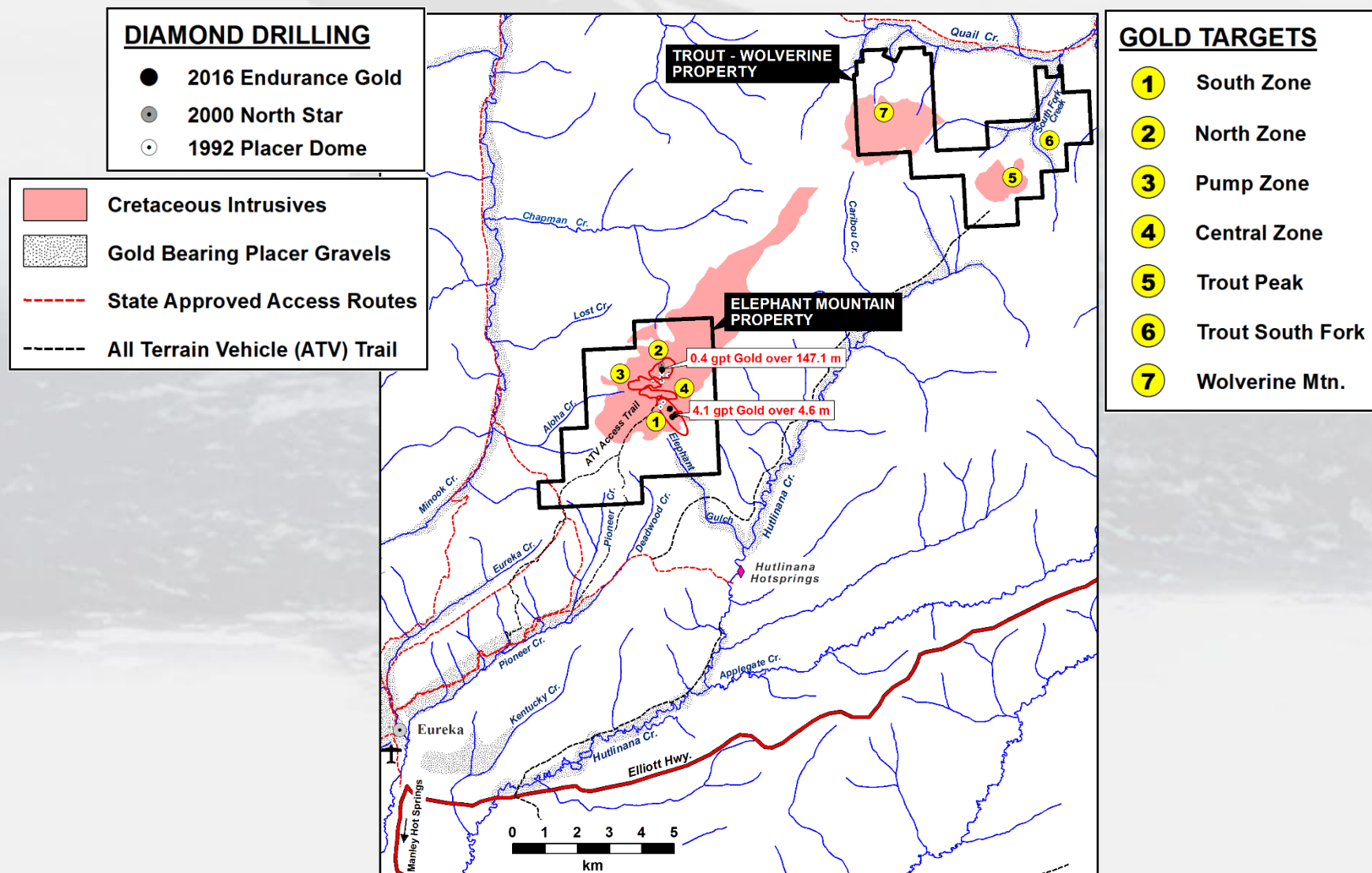




# Elephant Mountain Gold Project



# Elephant Mountain Gold Project



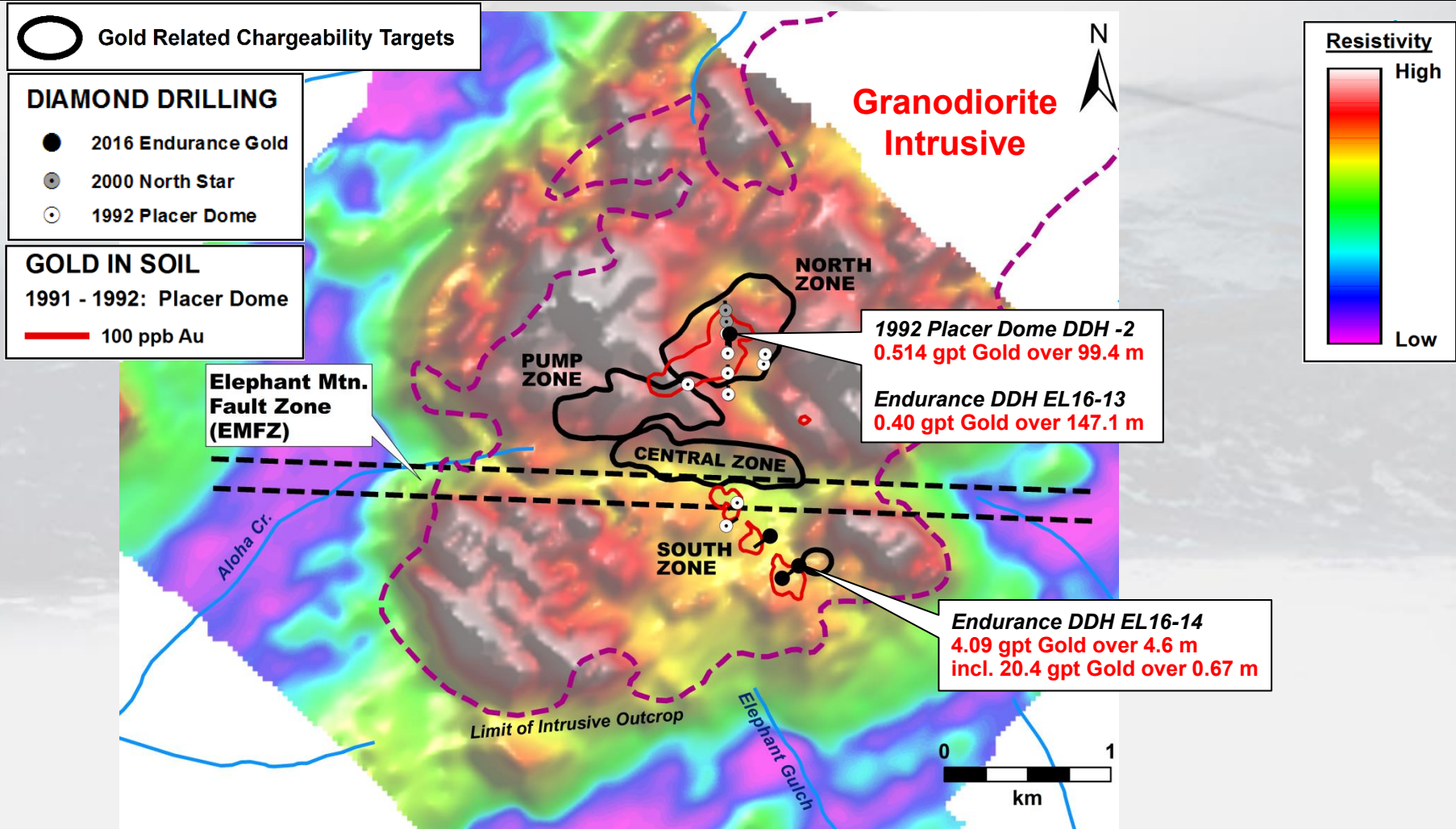


# Elephant Mountain Gold Project, Alaska

- Own 100% of Elephant Claims - Option to Earn 100% on Trout Claims
- Road and State trail accessible in Central Alaska. – Permitted for Drilling
- State Mining Claims – Central Alaska
- Target Similarity to Fort Knox AK, Golden Summit AK, Snowline, Eagle (Yukon)
- **Six** intrusive hosted gold target areas within a 12 x 5 km district **All zones are open to expansion through geochemical exploration**
- Drilling to date indicates a large 2 x 2 km gold mineralizing system straddling a wide intrusive-hosted fault zone with **4 targets**, 2 targets with wide low-grade gold and narrower high grade gold
- **South Zone Discovery** step - out drilling a high priority
- **North Zone, Pump Zone & Central Zone** chargeability targets warrant grid-drilling to discover higher grade feeder structures.
- **Trout Peak Target** a high priority for drilling
- **Trout South Fork** target warrants drilling

# Elephant Mountain Gold Project

## Airborne Geophysics – 7200 Hz. Resistivity





# Elephant Mountain Gold Project Intrusive Hosted - Induced Polarization Anomalies

SW

Looking West Northwest

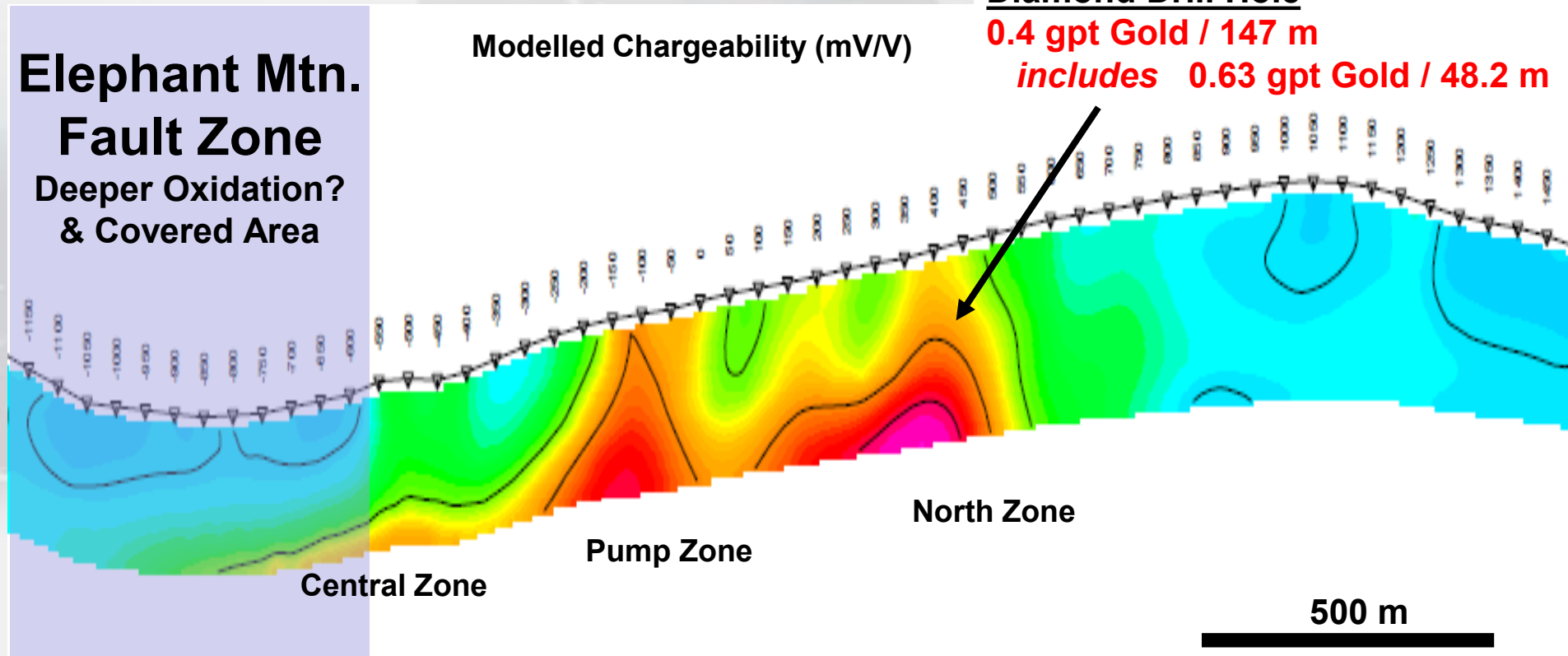
NE

Diamond Drill Hole

**0.4 gpt Gold / 147 m**

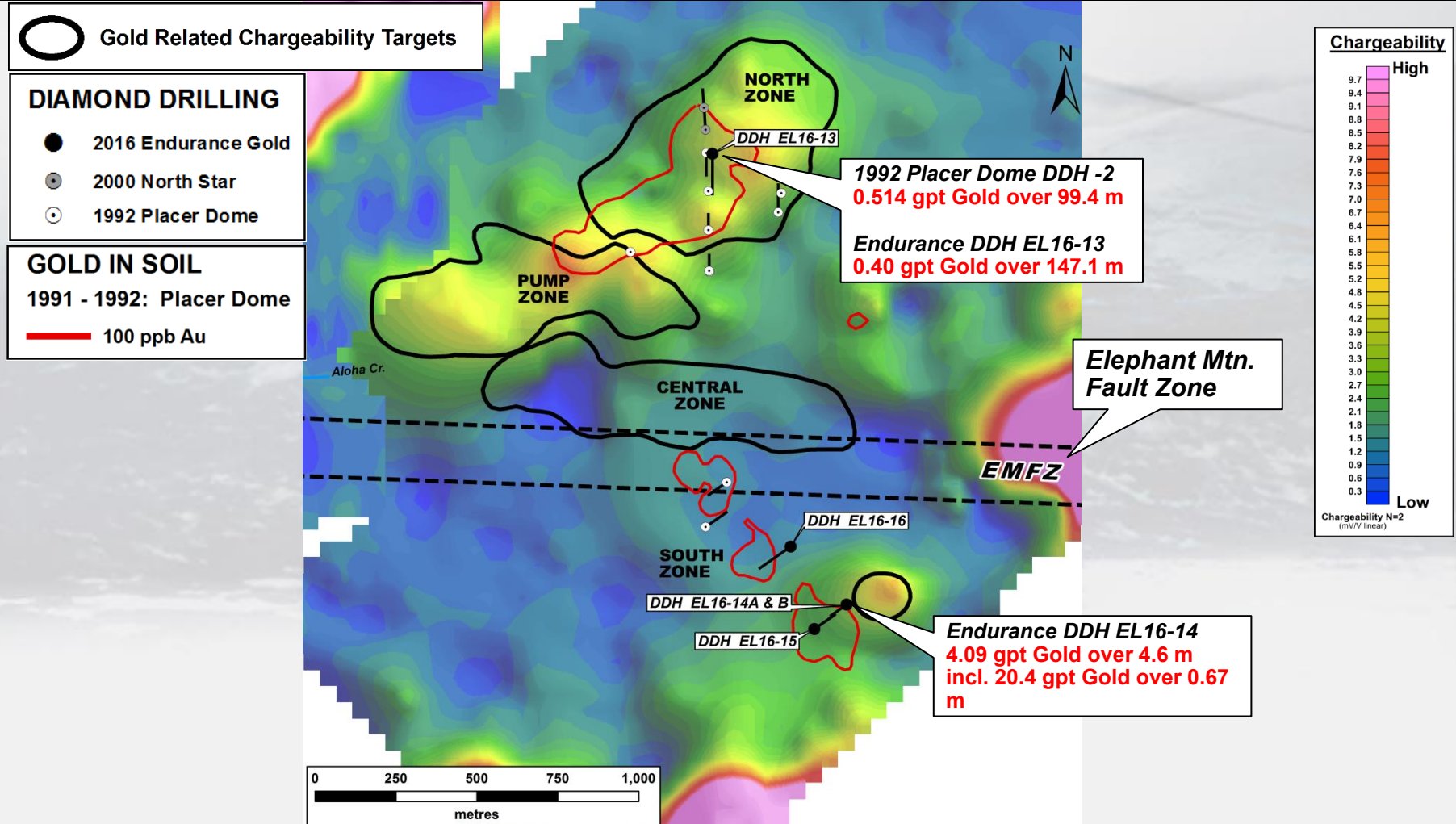
**includes 0.63 gpt Gold / 48.2 m**

Modelled Chargeability (mV/V)



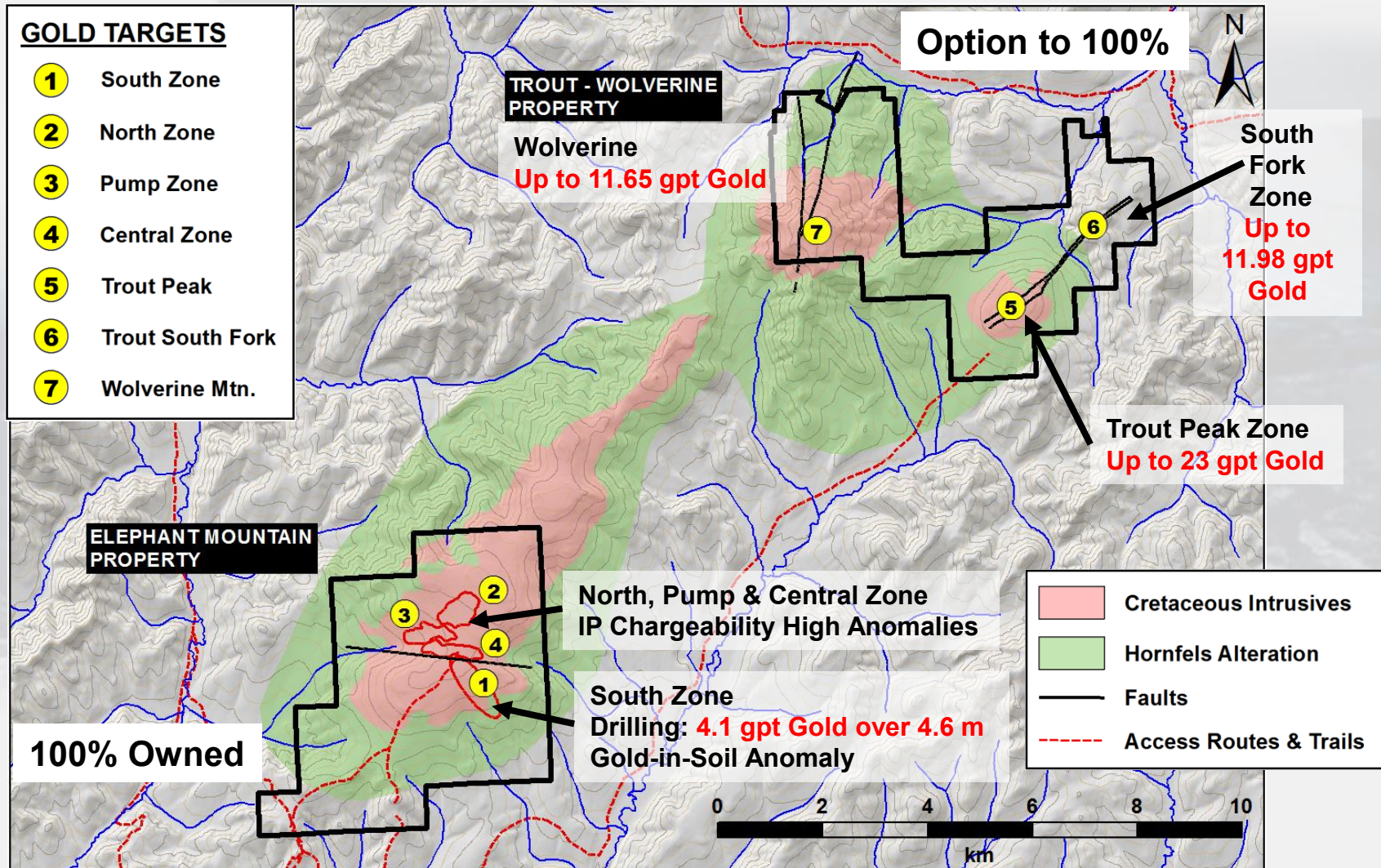
# Elephant Mountain Gold Project

## Chargeability (50m dipole) – N2





# Elephant Mountain Gold Project – Area Geology





# Elephant Mountain Gold Project

## Eureka – Manley Hot Springs District, Alaska

**1. Elephant Property – 100% owned**

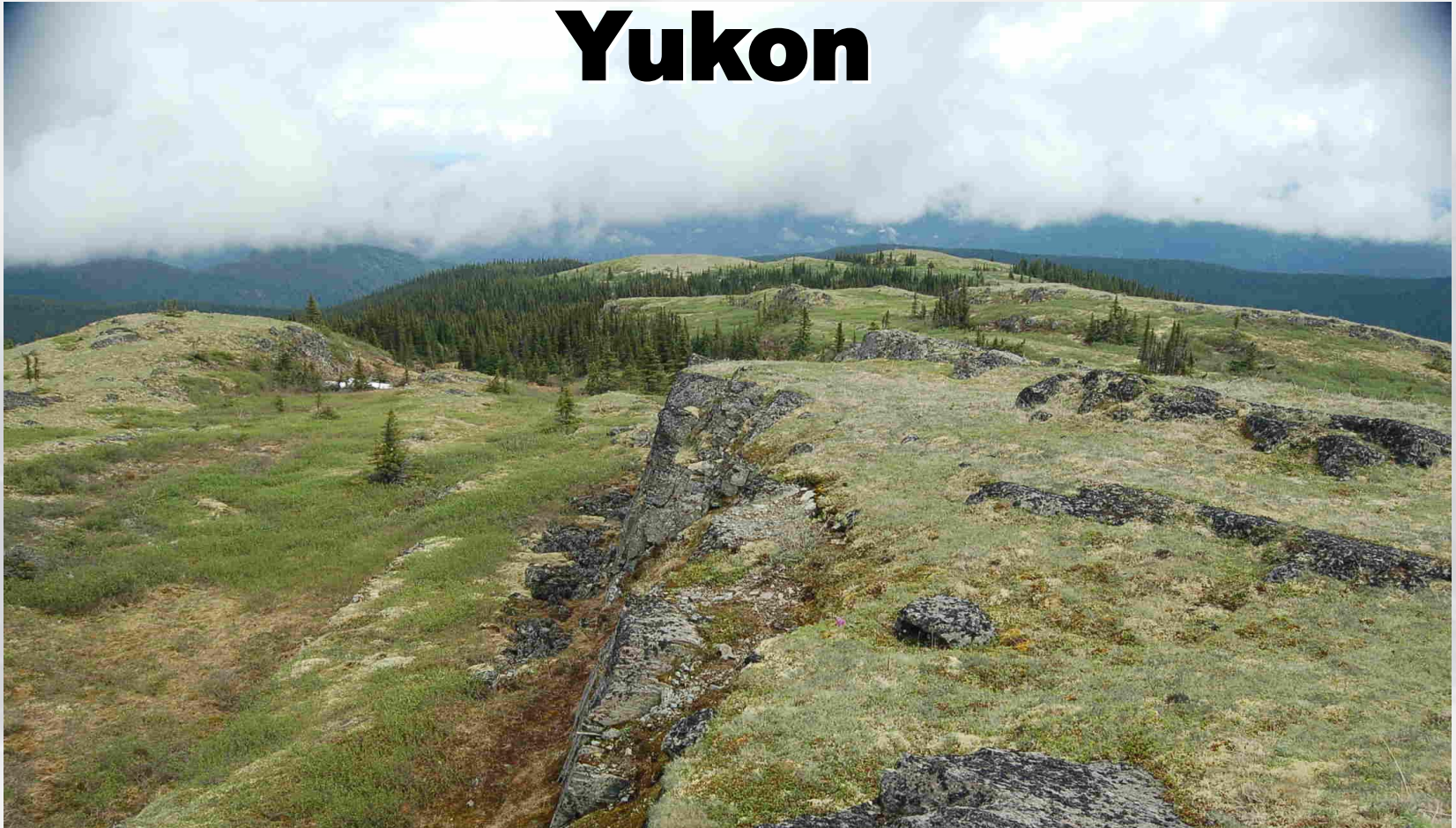
**2. Trout - Wolverine Property – Option to own 100%**

Remaining obligation - US\$30,000 cash by Dec 2025

Both Properties subject to 1% NSR after buyout



# **BANDITO REE-Nb PROJECT Yukon**

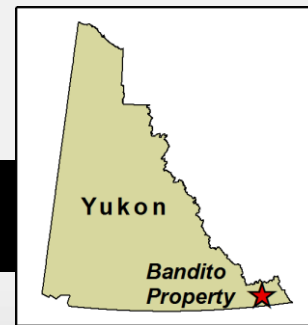


**100% Endurance Owned  
Rare Earth-Niobium-(Nickel-Copper) Target**

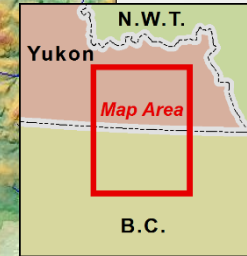
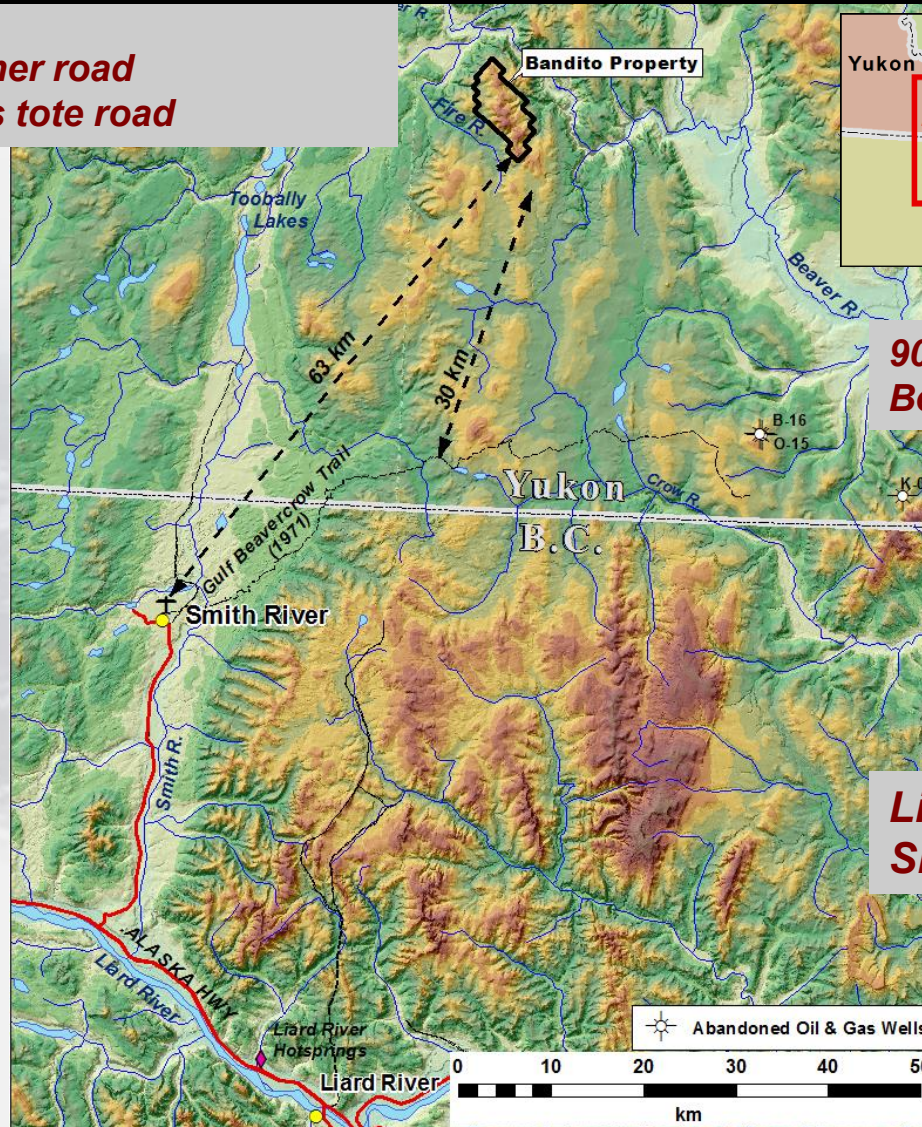


# Bandito Project, Yukon

## Location Map



**63 km from all weather road**  
**30 km from oil & gas tote road**



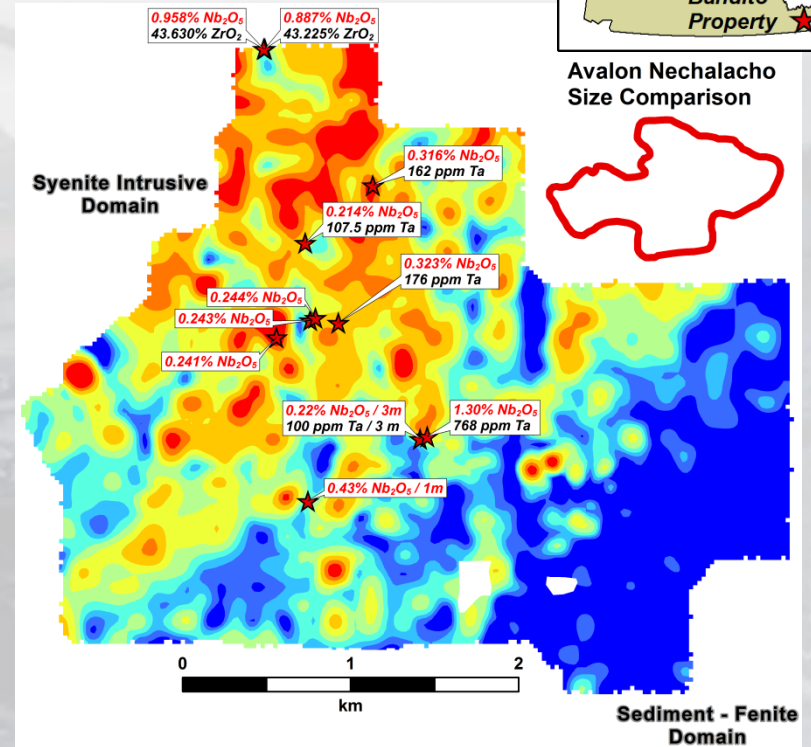
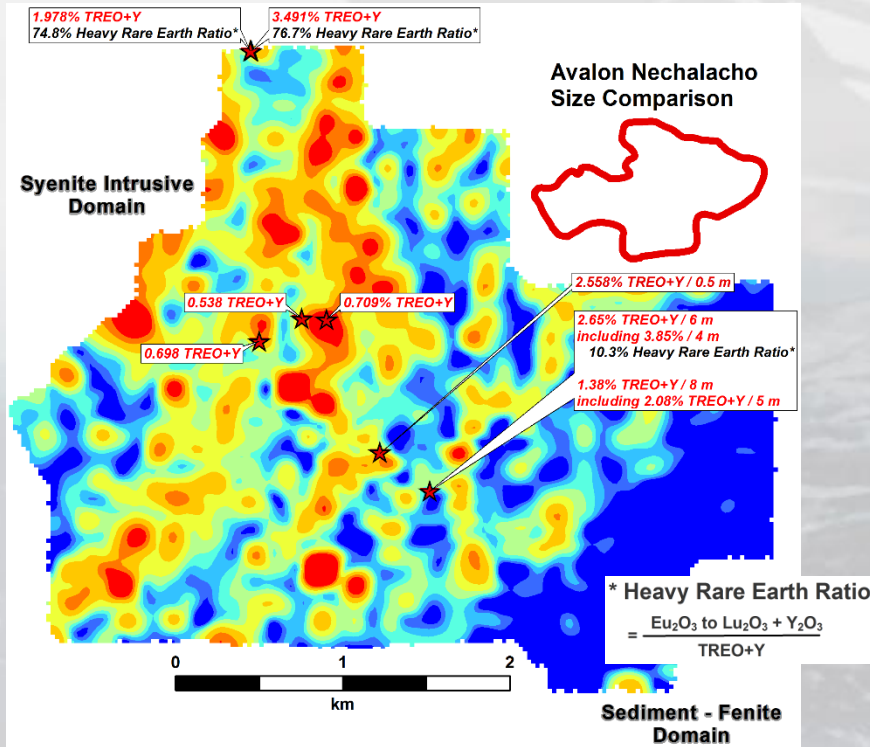
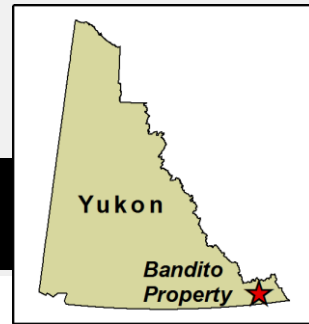
**90 kilometres to  
Beaver River gas wells**

**Liard River  
Shale Gas Basin**



# Bandito Project, Yukon

## Highlights REE & Niobium in Soil



### 2011 Soil Grid

Total REE & Yttrium

TREE+Y (ppm)	Percentile
600 - 3,534	> 95th
496 - 600	> 90th
389 - 496	> 80th
322 - 389	> 70th
280 - 322	> 60th
256 - 280	> 50th
233 - 256	> 40th
218 - 233	> 30th
40 - 218	< 30th

★ 2011 and 2012 Grab or Chip Sampling  
(% TREO+Y / metres)

**Large Rare Earth  
and Niobium  
Soil Anomalies related to  
High REE-Nb bedrock values  
in Syenite**

**Soil Grid Sample Density**  
2011 Grid = 100 m x 100 m

**Niobium - Tantalum  
Statistical Correlation is 86.5%**

### Niobium in Soil

Nb (ppm)	Percentile
196 - 575	> 95th
146 - 196	> 90th
96 - 146	> 80th
68 - 96	> 70th
50 - 68	> 60th
40 - 50	> 50th
34 - 40	> 40th
29 - 34	> 30th
5 - 29	< 30th

★ 2011 and 2012 Grab or Chip Sampling  
(% Nb<sub>2</sub>O<sub>5</sub> / metres)

### Tantalum in Soil

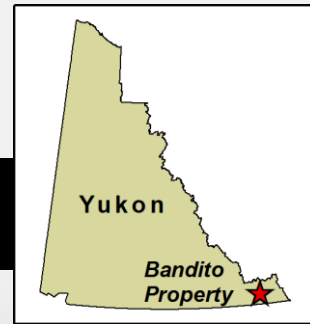
Ta (ppm)	Percentile
9.4 - 54	> 95th
6.9 - 9.4	> 90th
4.7 - 6.9	> 80th
3.4 - 4.7	> 70th
2.7 - 3.4	> 60th
2.3 - 2.7	> 50th
2.1 - 2.3	> 40th
1.8 - 2.1	> 30th
0.1 - 1.8	< 30th

**Soil Grid Sample Density**  
2006 Grid = 50 m x 25 m  
2011 Grid = 100 m x 100 m

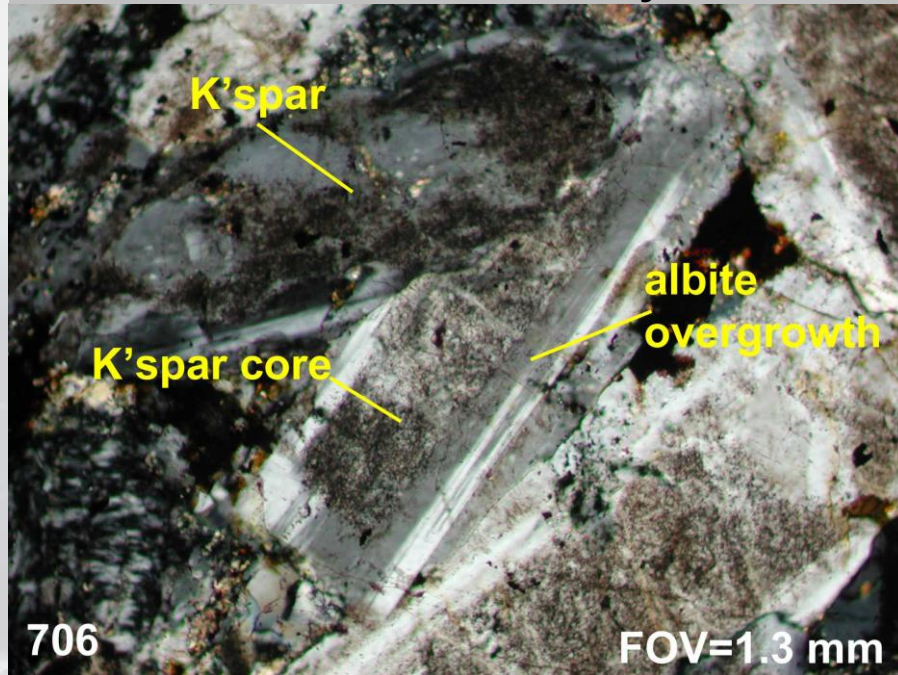


# Bandito Project, Yukon

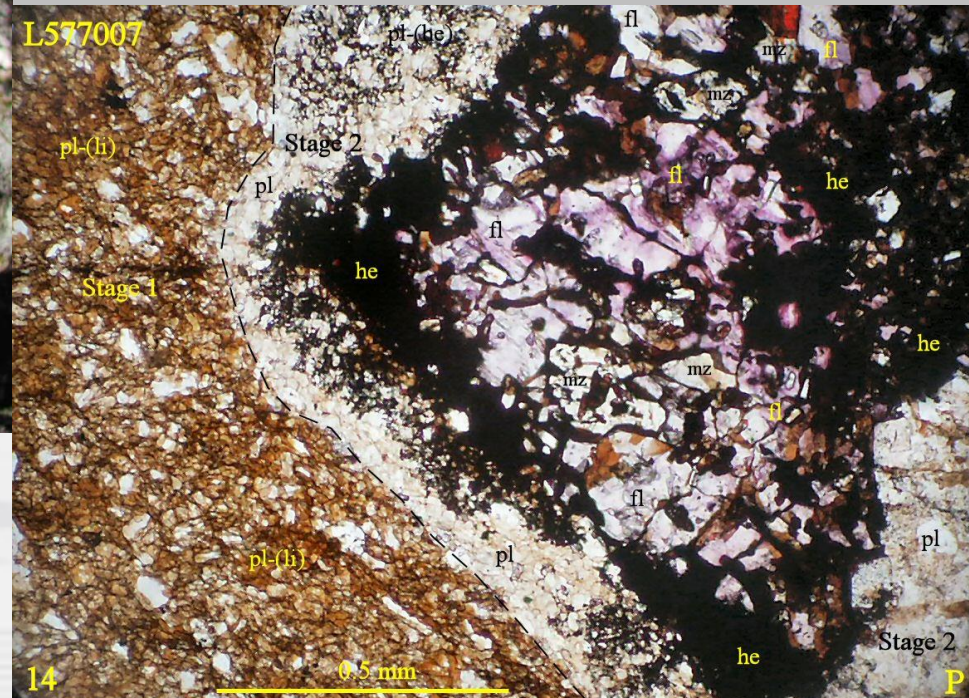
## Sodium and Potassium Metasomatism



Albite – potassium feldspar Fenite  
or fenitized intrusive dykes



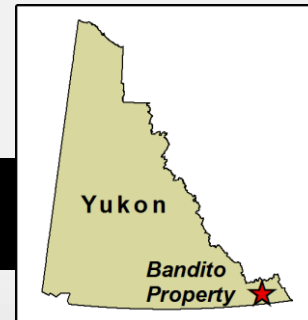
Multistage fluorite hematite monazite  
plagioclase Fenite



**Grabs up to 6.8% TREO**

# Bandito Project, Yukon

## Project Highlights

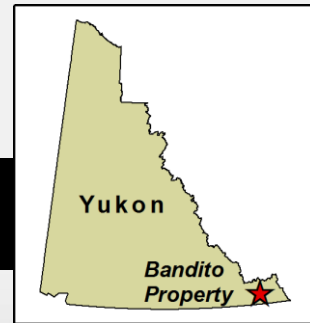


1. **Drill Ready REE target** - 3.0 by 0.5 Km Rare Earth System in Fenite – 2.3% TREO+Y over 6 m with 10.8% Heavy Rare Earths in Fenite - plus consistently high niobium values in Fenite.
2. **Drill Ready Nb-Ta targets** - Over 30 chip & grab samples contain in excess 0.143% Nb<sub>2</sub>O<sub>5</sub> with values up to 1.3% Nb<sub>2</sub>O<sub>5</sub> and 0.094% Ta<sub>2</sub>O<sub>5</sub> in syenite.
3. Up to 1.8 km by 600 m TREE+Y and Niobium-Tantalum soil anomalies in +4 square km altered “Red Syenite” together with values up to 3.49% TREO+Y with 76% Heavy Rare Earth and 0.96% Nb<sub>2</sub>O<sub>5</sub> indicate discovery potential for volumetrically large Syenite-Intrusive hosted REE-niobium-tantalum deposits.  
**Drill Ready after intensive prospecting and trenching.**
4. The alteration and “pregnant” rare metals system remains open to expansion within the current property.
5. The Copper-Nickel “Discovery” soil anomaly is 1000 by 600 m, much larger than the area of known mineralization (580 by 200 metres). **Drilling warranted.**



# Bandito Project, Yukon

## Next Steps



1. LiDAR Complete – Interpretation required to assist with defining lithological and intrusive contacts
2. Airborne + Ground Geophysics – To define system size with radiometrics.
3. Additional soil & rock sampling – To define limits of the large intrusive-hosted rare earth, niobium, and tantalum system.
4. Yukon Class 1 Permit approved for 2023 & 2024 - Renewal Required for 2025 - this permit allows some recon drilling
5. Class 3 Drill and Trench permit application under consideration.
6. Drilling – Several rare earth, niobium/tantalum and nickel-copper targets warrant drill testing.
7. Trenching – To identify controls and extent of rare earth and niobium-tantalum mineralization in intrusive-hosted and fenite targets.





**[www.endurancegold.com](http://www.endurancegold.com)**

*Robert T. Boyd, P.Geo. is a qualified person as defined in National Instrument 43-101 and supervised the compilation of the information forming the basis for this summary.*

Suite 1212 – 666 Burrard Street  
Vancouver, BC V6C 2X9 Canada  
Toll Free Phone: 877-624-2237

EDG: TSX.V | ENDGF: OTCQB | Frankfurt: 3EG