



# **Reliance Gold Project**

## **Gold Bridge, B.C.**

**July 2025**

## Corporate Disclosure

*The company is an exploration stage mineral resource exploration company and none of its mineral projects have yet to be proven to be economic. The contents of this presentation is for information purposes only and does not constitute an offer to sell or a solicitation to purchase any securities referred to herein.*

### **Forward-looking Statements**

*This presentation contains “forward-looking information” within the meaning of applicable Canadian securities regulations. All statements other than statements of historical fact herein, including, without limitation, statements regarding the company’s plans, goals or objectives and future exploration, development, potential mineralization, exploration results and future plans are forward-looking statements that involve various risks and uncertainties. There can be no assurance that such statements will prove to be accurate, and actual results and future events could differ materially from those anticipated in such statements. Readers are advised not to place an undue reliance on forward-looking statements.*

# Corporate Snapshot

<b>Shares Outstanding</b> <i>(June 30, 2025)</i>	176.3m
<b>Market Capitalization</b> <i>(C\$0.21 – June 30, 2025)</i>	C\$37.0 m
<b>Options</b> <i>(C\$0.20 – C\$0.34)</i>	10.1 m
<b>Warrants</b> <i>(C\$0.17 – C\$0.42)</i>	12.6 m
<b>Fully Diluted</b> <i>(Dec 31, 2024)</i>	200 m
<b>Working Capital</b> <i>(March 2025)</i>	C\$3.99 m*

*\* includes marketable securities*



**Insiders  
own  
over 60%**

## Key People

**Robert T. Boyd**  
*President, CEO & Director*

**Darren O'Brien**  
*Vice President Exploration*

**Teresa Cheng**  
*CFO & Corporate Secretary*

**Richard Gilliam**  
*Director*

**H. Ross Arnold**  
*Director*

**Robert Pease**  
*Director*

**J. Christopher Mitchell**  
*Director*

## Reliance Gold Project 2024 Program Highlights

**25 km of diamond drilling** has delivered a significant high-grade gold discovery in a easily accessible productive Gold Camp

Gold deposit now over **1.5 km of trend and 1.1 km vertically** – Excellent hit statistics

2024 Drilling confirms Eagle and Imperial are the same structural envelope with Crown intersections of **7.61 gpt gold over 5.7 m & 147 gpt gold over 1 m**

2024 Drill Discovery of the Lower Imperial with **7.18 gpt Gold over 8.3 m** – new “wide open” parallel structure & the deepest gold intersection to date

2024 Surficial Anomaly indicates additional 500 m potential to the SE of Eagle.

**Finalized 100% ownership** in 2024 – maximum 1% NSR after optional buydown

Sunk Project Costs **total \$10.1 million** after Tax Credits - low unit discovery metrics?

## Reliance Gold Project - 2025 Goals

**7,000 m Diamond Drilling  
Royal Shear (Imperial to Eagle)**

**2025 Goal**

Infill, Expand & 3D model for Conceptual OP  
Expand 2024 Lower Imperial Discovery  
Expand Royal Shear to Depth for UG Future

**Maiden Mineral Resource**

**2025 Goal**

Inaugural open pit resource

**Representative Metallurgy**

**2025 Goal**

Demonstrate ability to consistently deliver  
high grade gold concentrate

**New Discovery Growth**

**2025 Goal**

Advance SE Surface Discovery to Drilling  
Acquire Permit for Olympic Drilling  
New Olympic Target Definition



# Reliance Gold Project – Ideal Location

## Bralorne Orogenic Camp, Gold Bridge, B.C.

### New Surface Discovery

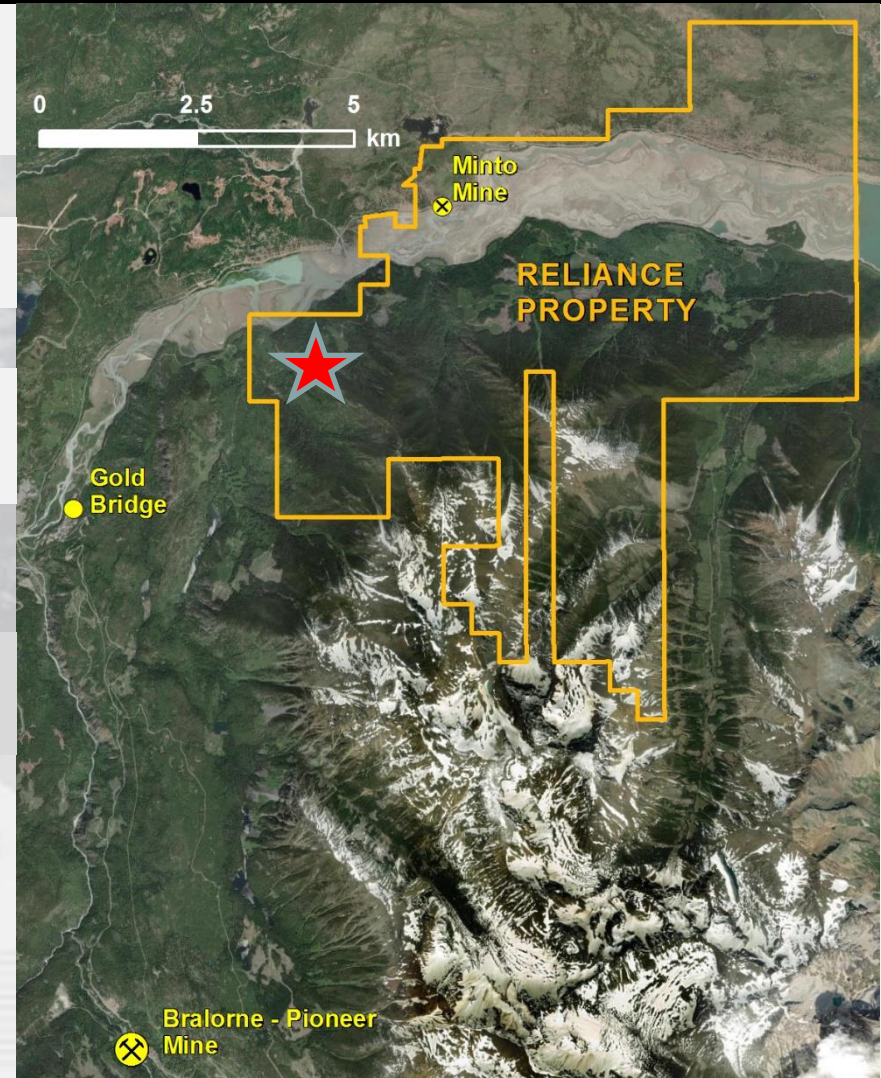
10 km from historic Bralorne Camp  
(+4 million ounces of historic production)



4 hour Drive  
from Vancouver

5 km from  
La Joie Hydro  
Dam

  
Imperial and  
Eagle Zones

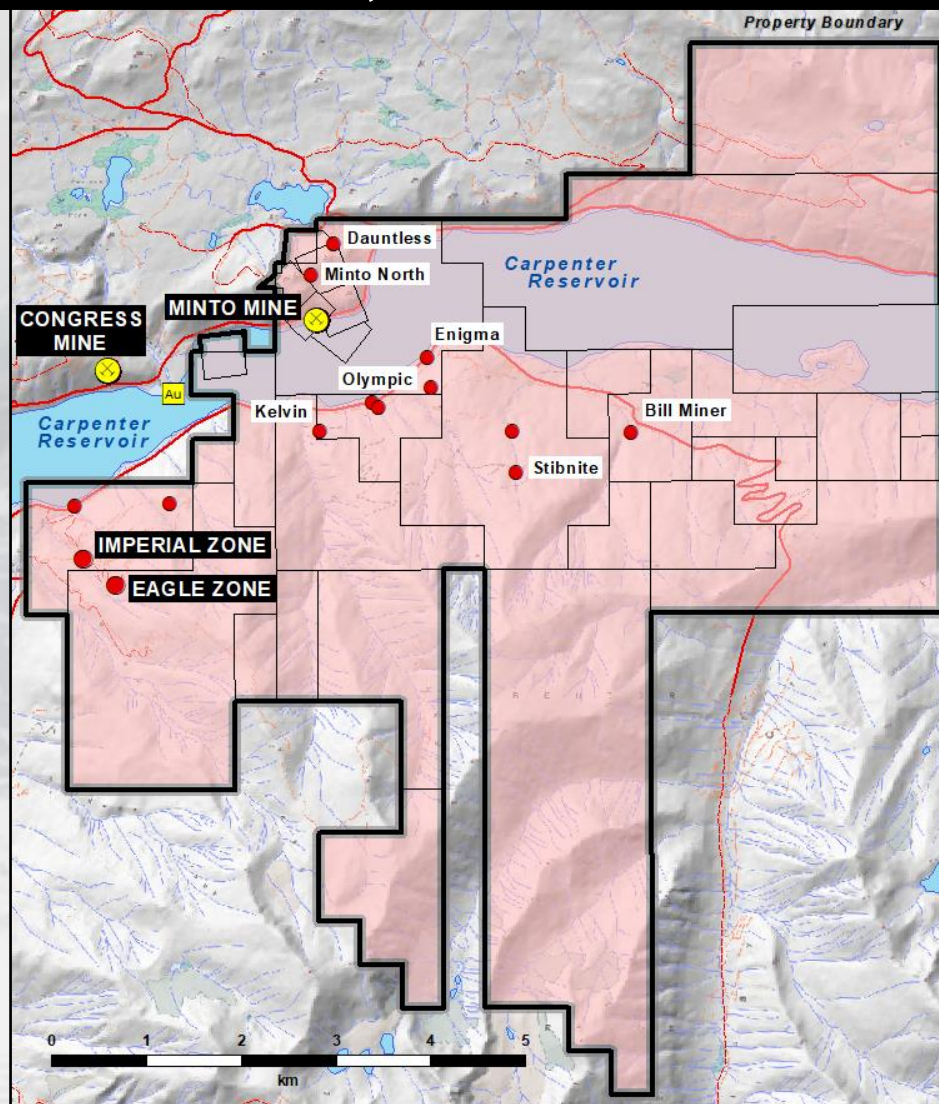
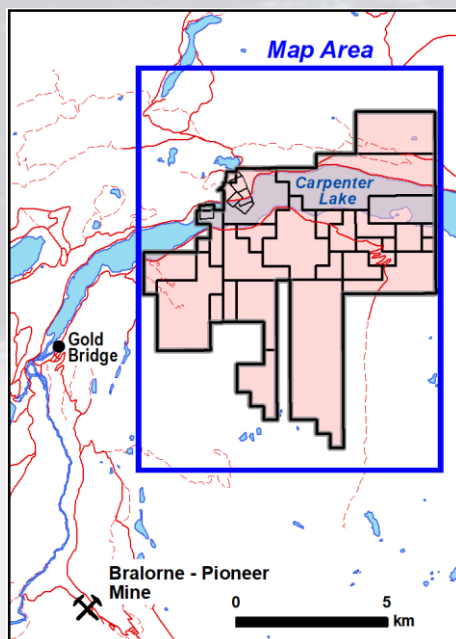




# Reliance Gold Project, BC 100% Owned – 5,505 Hectares

**District Consolidation of  
Historic & Accessible  
Gold & Antimony  
Prospects**

**A “Shallow” Orogenic  
Setting**



**Royal Shear Inclined Long Section**

**1,500 m Horizontal**

**1,100 m Vertical**

**Imperial Zone**

**Eagle**

**LOWER CROWN**

**LOWER IMPERIAL**

**OPEN**

**OPEN Expand at depth**

**DDH24-100**  
5.15 gpt Au / 21.6 m

**DDH24-093**  
74.29 gpt Au / 2.0 m

**DDH24-103**  
7.61 gpt Au / 5.7 m

**DDH24-083**  
2.19 gpt Au / 12.1 m

**DDH24-106**  
3.51 Au / 6.7 m

**DDH25-109**  
6.74 gpt Au / 21.8 m incl.  
10.11 gpt Au / 12.4 m

**DDH24-106**  
7.18 Au / 8.3 m

**Infill Drilling**

**VG**

**0 100 200 300 400 500 metres**

**066°**

**near Fault**

**NG (DDH & RC)**

**es (g x m)**

**Visible Gold**

**m x Metres is**

**inal section.**

**umulation**

**g the**

**ected**

**osite.**

**asure**

**Longitudinal**

**Imperial Zone**

**Steep**

**0**





# Reliance Gold Project, BC – 2021 to 2024 DDH Statistics

1. Completed **108 Diamond** Drill Holes between 2021 to 2024
2. Majority of Drill holes at the **Eagle Area – SIGNIFICANT DISCOVERY**
  - 15.7 gpt Gold over 24.8 m including 26.96 gpt Gold over 4.1 m
  - 8.62 gpt Gold over 24.4 m including 17.02 gpt Gold over 4.3 m
  - 8.41 gpt Gold over 12.0 m, 8.05 gpt Gold over 13.0 m
  - 6.51 gpt Gold over 14.0 m, including 36.3 gpt Gold over 1.0
  - 6.20 gpt Gold over 7.8 m, including 10.70 gpt Gold over 2.6 m
  - 5.15 gpt Gold over 21.6 m, including 9.97 gpt Gold over 5.9 m
  - 3.05 gpt Gold / 139.9 m, 4.16 gpt Gold / 30.0 m, 5.8 gpt Gold / 23 m
3. 18 DDH at **Imperial & NEW Lower Imperial Zones** – majority mineralized
  - 8.47 gpt Gold over 24.9 m including 16.27 gpt Gold over 10.5 m
  - 8.98 gpt Gold over 9.3 m including 12.44 gpt Gold over 6.0 m
  - 17.28 gpt Gold over 4.2 m including 35.20 gpt Gold over 1.3 m
  - 7.18 gpt Gold over 8.3 m including 28.08 gpt Gold over 1.7 m
4. Crown and Lower Crown Discovered in 2024 – Visible Gold areas
5. **73 of 108 DDH** have “significant” intersections
6. **19 of 108 DDH** have “excellent” drill intersections

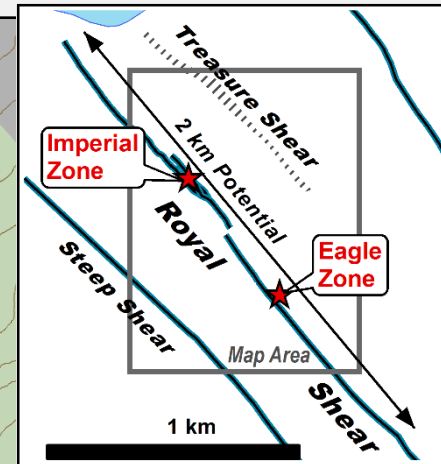
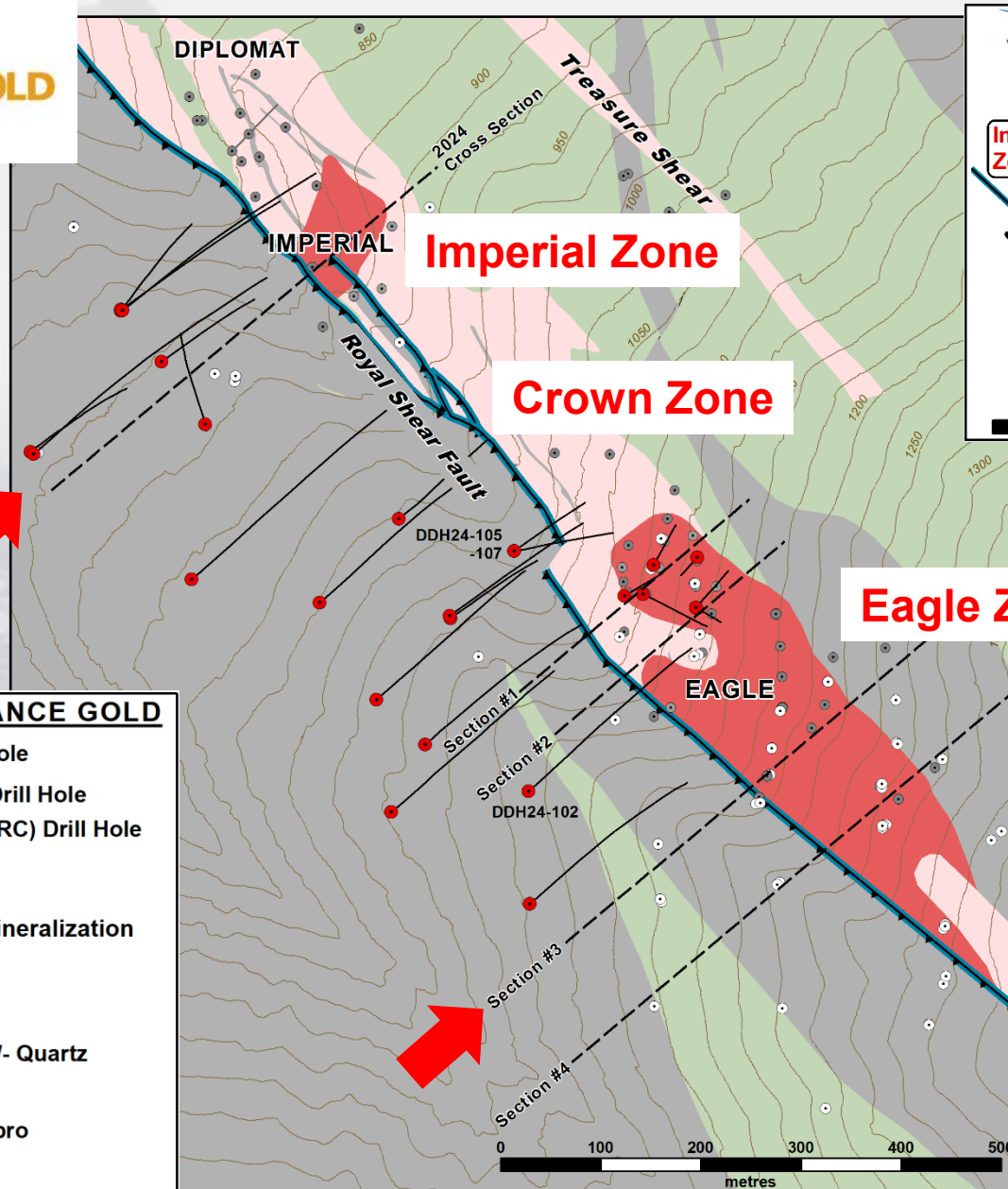
# Reliance Gold Project, B.C. Best Diamond Drill Holes 2021 to 2024

<u>Zone &amp; DDH</u>	<u>From</u>		<u>Au g/t / Metre</u>
Eagle - 22-058	32.1		3.05 gpt / 139.9m
Eagle - 21-020	33.3		15.70 gpt / 24.8m
Imperial - 21-009	161.0		8.47 gpt / 24.9m
Eagle - 21-006	25.6		8.62 gpt / 24.4m
Crown - 24-093	159.9		74.29 gpt / 2.0m
Eagle - 23-076	9.3		5.80 gpt / 23.0m
Eagle - 22-027	109.2		4.16 gpt / 30.0m
Eagle - 24-100	9.9		5.15 gpt / 21.6m
Eagle - 22-026	80.4		8.06 gpt / 13.5m
Eagle - 22-024	27.0		8.41 gpt / 12.0m
Eagle - 22-036	35.4		7.65 gpt / 12.7m
Eagle - 24-104	7.0		6.51 gpt / 14.0m
Eagle - 22-031	124.9		7.58 gpt / 11.9m
Eagle - 22-045	35.1		7.31 gpt / 11.6m
Eagle - 21-004	1.0		4.44 gpt / 19.0m
Imperial - 23-065	212.8		8.98 gpt / 9.3m
Eagle - 22-028	97.0		2.59 gpt / 31.6m
Imperial - 23-066	306.5		17.28 gpt / 4.2m
Imperial - 24-106	608.3	NEW Lower Imperial Discovery	4.47 gpt / 15.3m

Ranking- First 2025 DDH

# Reliance Gold Project

## Royal Shear Geology & Cross Sections



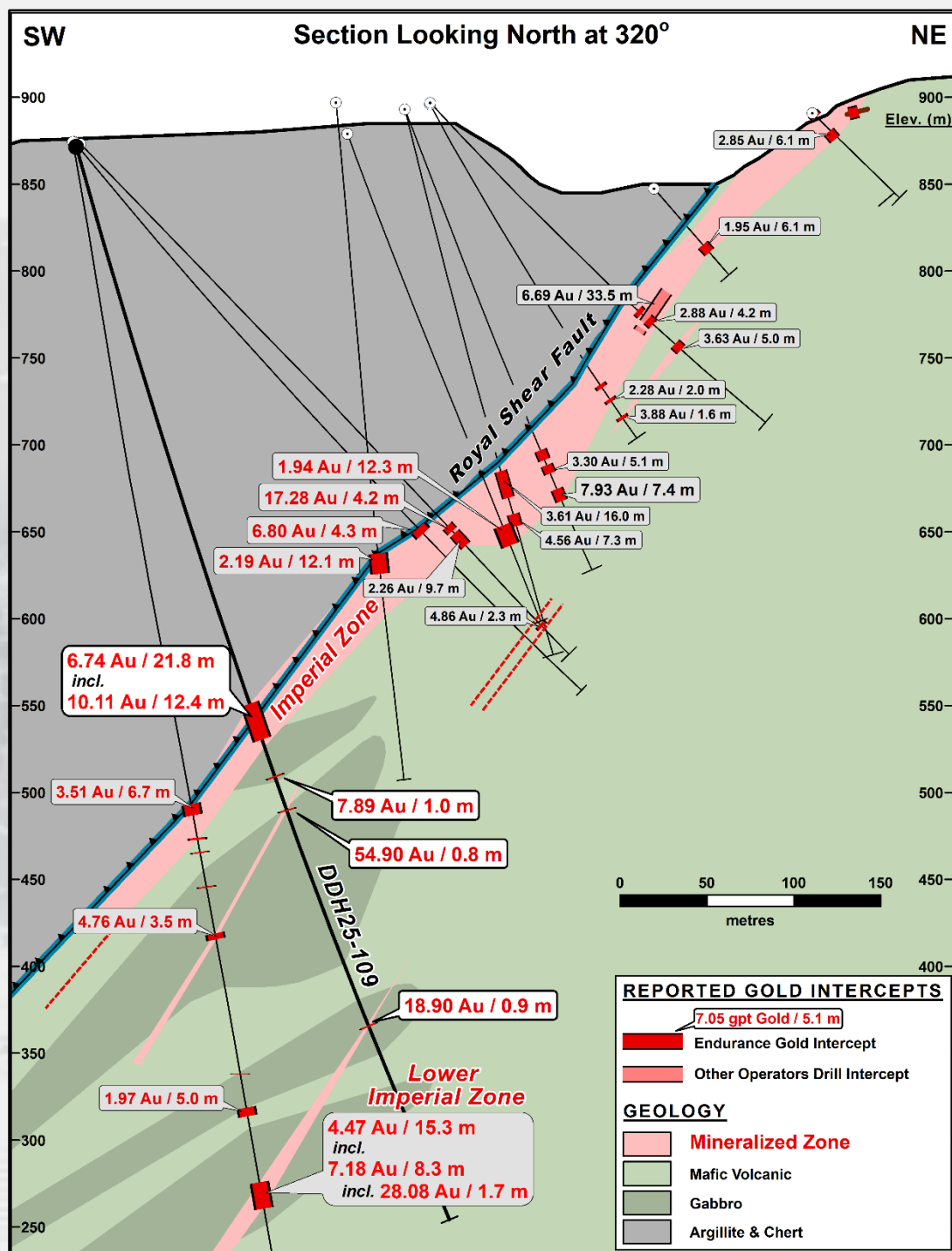


# Reliance Gold Project

## Imperial Zone

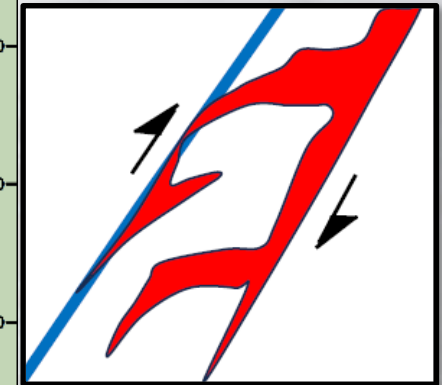
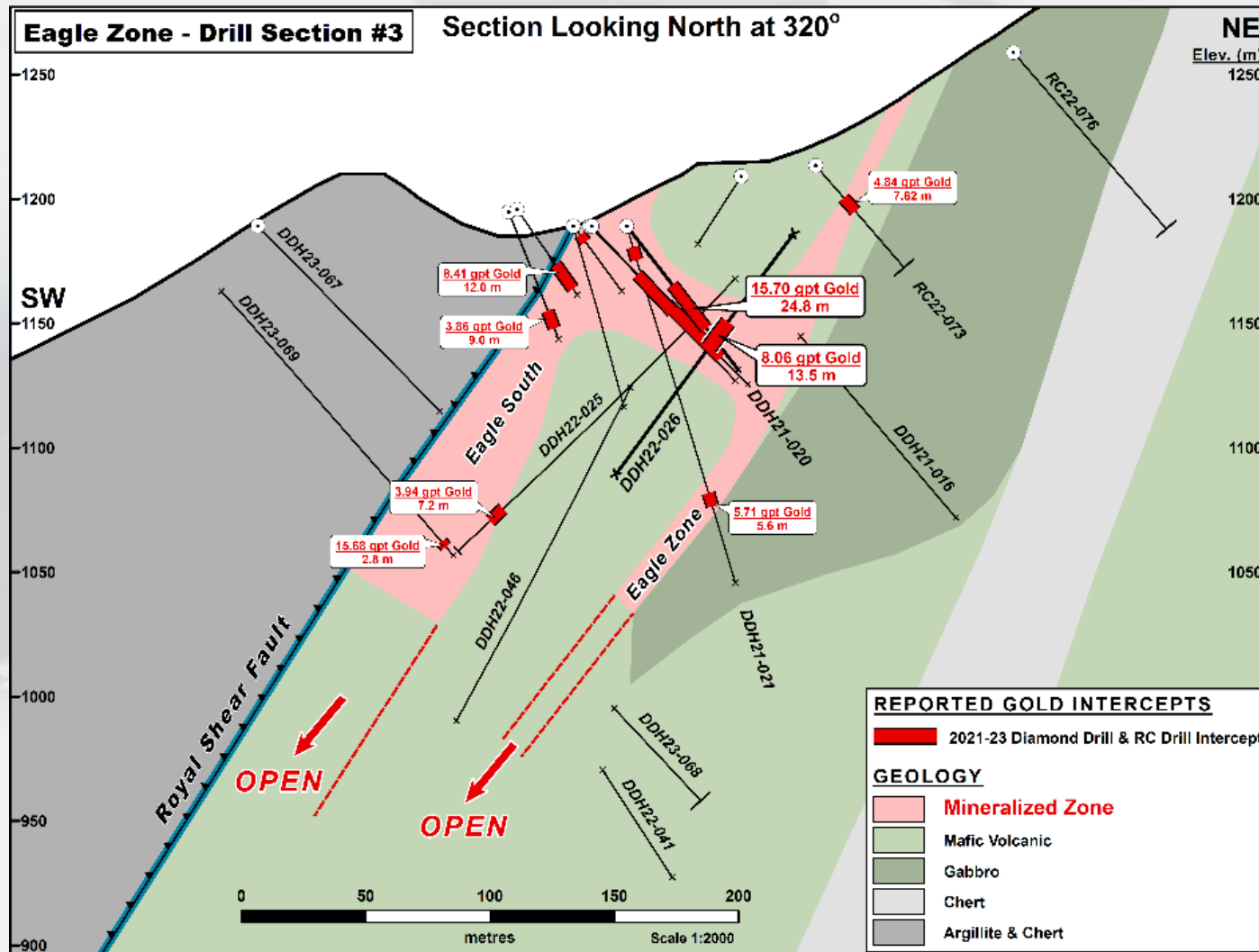
### 2025 Drill Cross-Section

#### DDH25-109



# Reliance Gold Project

## Eagle Cross Sections #3 – (700 M south of Imperial)



Reliance Interpretation  
at Eagle Zone  
(Rhys 2024)

## Reliance Gold Project Mineralized Breccia Textures

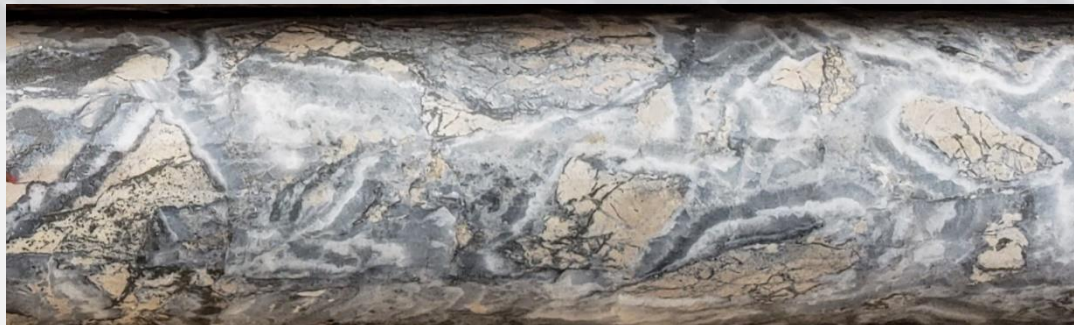
**Gold - Arsenopyrite Quartz Breccia (Cataclastite) 6.19 gpt Gold over 0.85 m**



**DDH22-027  
@ 116.4m**

**Fine grained “crushed”  
pyrite, aspy, stibnite with  
fine grained quartz  
breccia fragments &  
late ankerite veins**

**Gold - Arsenopyrite “Cockade or Coxcomb” Quartz Breccia 14.35 gpt Au /2.0 m**



**DDH22-031  
@ 128 m**

**late phase of “open space”  
cockade quartz with  
stibnite, aspy, pyrite  
infilling mineralized altered  
mafic volcanic fragments**



# Reliance Gold Project Imperial Zone DDH25-109

From	To	Length	Sample Number	Au_USE g/t	Ag_USE ppm	Sb_USE ppm
332.5	333.6	1.1	L644809	0.001	0.03	1.7
333.6	335	1.4	L644811	0.015	0.14	25
335	336	1	L644812	0.064	0.19	11.5
336	336.6	0.6	L644813	3.3	1.16	123.5
336.6	338	1.4	L644814	0.009	0.08	14
338	339.3	1.3	L644815	0.106	0.22	49.5
339.3	340.4	1.1	L644816	5.79	2.78	216
340.4	342	1.6	L644817	8.58	6.62	873
342	343.7	1.7	L644818	12.85	12.2	528
343.7	344.5	0.8	L644819	14.1	5.17	206
344.5	345.5	1	L644821	9.7	4.6	800
345.5	346.5	1	L644822	9.64	8.01	1105
346.5	347.3	0.8	L644823	6.06	12.05	8610
347.3	348	0.7	L644824	0.905	1.76	800
348	349.8	1.8	L644825	13.95	9.34	10400
349.8	350.7	0.9	L644826	6.62	4.01	298
350.7	351.7	1	L644827	16.25	4.4	327
351.7	353	1.3	L644828	2.38	0.91	137.5
353	355	2	L644829	0.056	0.16	23.8
355	356.3	1.3	L644831	0.449	0.44	51.7
356.3	357.8	1.5	L644832	10.5	4.43	2710
357.8	359	1.2	L644833	0.023	0.64	64.4
359	359.9	0.9	L644834	0.017	0.33	13
359.9	361	1.1	L644835	0.005	0.33	9.86
379	380	1	L644836	0.005	0.02	7.74
380	381	1	L644837	7.89	0.41	241
381	382	1	L644838	0.027	0.02	20.3

**6.74 gpt Au  
& 0.16% Sb  
over 21.8 m**

**Includes  
10.11 gpt Au  
& 0.25% Sb  
over 12.4 m**

## Reliance Gold Project

### Upper Crown Discovery in DDH24-093

NQ Core **Visible gold** in Quartz Vein – **147.5 gpt gold / 1.0 m**



# Reliance Gold Project – Antimony Compilation

## 10.1 m width, 4.55 gpt Gold & 0.20% Antimony

Weighted Average of 199 DDH, RC & Channel Composites

### Best Assay Composites with Antimony (2020 to 2024)

Hole / Roadcut ID	From (m)	To (m)	Length (m)	Au (gpt)	Antimony %	AuEQ (gpt)	Type
2020 Eagle1	61.3	101.8	40.5	4.98	0.54	6.14	Surface Channels
2022 EG07-01	34.0	42.0	8.0	6.35	1.49	9.57	Surface Channels
DDH21-003	0.8	17.8	17.0	4.87	0.51	5.96	DDH
DDH21-020	33.3	58.1	24.8	15.70	0.45	16.66	DDH
DDH22-036	35.4	48.1	12.7	7.65	0.48	8.69	DDH
DDH23-076	9.3	22.0	12.7	8.52	0.39	9.36	DDH
DDH24-091	370.5	371.0	0.5	2.16	19.20	43.50	DDH
DDH24-104	7.0	21.0	14.0	6.51	0.35	7.26	DDH
RC20-014	0.0	18.3	18.3	4.46	0.54	5.63	RC
RC20-015	0.0	16.8	16.8	7.39	0.46	8.37	RC
RC21-037	19.8	44.2	24.4	4.88	0.36	5.66	RC
RC22-062	44.2	82.3	38.1	5.40	0.26	5.95	RC

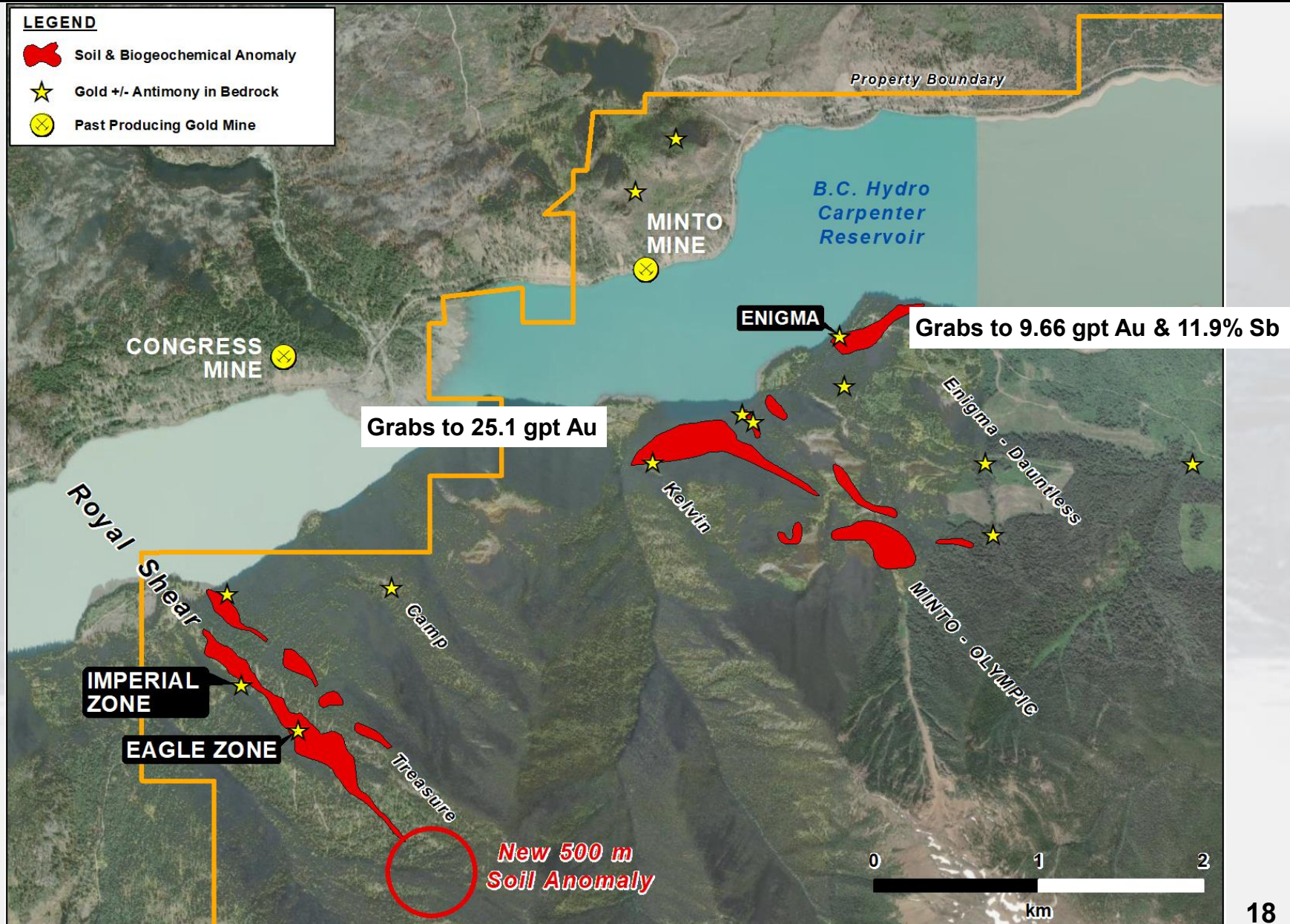
*Composites are reported over a drill length with a 1.0 gpt gold-equivalent (“AuEQ”) cut-off.*

*AuEQ calculated using commodity prices of US\$2,600/oz Au and US\$18,000/tonne antimony.*



# Reliance Gold Project, B.C.

## Eagle, Imperial & the Olympic Geochemical Anomalies





## Reliance Gold Project Olympic Claims - Enigma Showing

**4.1 gpt Gold**  
**6.78% Antimony**



**Enigma Vein Grab Sample with Stibnite Crystals**

## Reliance Gold Project, BC Conclusions

- An outstanding New Exploration Discovery in an historically productive multi-million ounce Orogenic Gold Camp.
- Wide pervasive iron-carbonate sericite alteration, sulphidization, breccia, and antimony indicate an “Epizonal” Orogenic setting in a “brittle” structural regime – Epizonal comparables to Fosterville, Australia and Newfoundland discoveries.
- Model provides potential for a major gold system with depth continuity.
- Drilling has delivered a high percentage of significant and excellent gold intersections with associated antimony.
- Deposit extends **1.5 km laterally X 1.1 km vertically**. Eagle, Crown & Imperial confirmed as continuous structural regime
- New 2024 Discoveries at **Lower Crown** and **Lower Imperial** Zones. Expand system potential
- New parallel surficial structural trends developing as high priority drill targets





**[www.endurancegold.com](http://www.endurancegold.com)**

*Robert T. Boyd, P.Geo. is a qualified person as defined in National Instrument 43-101 and supervised the compilation of the information forming the basis for this summary.*

Suite 1212 – 666 Burrard Street  
Vancouver, BC V6C 2X8 Canada  
Toll Free Phone: 877-624-2237

EDG: TSX.V | ENDGF: OTCQB | Frankfurt: 3EG