



Reliance Gold Project

Gold Bridge, B.C.

November 2025

Corporate Disclosure

The company is an exploration stage mineral resource exploration company and none of its mineral projects have yet to be proven to be economic. The contents of this presentation is for information purposes only and does not constitute an offer to sell or a solicitation to purchase any securities referred to herein.

Forward-looking Statements

This presentation contains “forward-looking information” within the meaning of applicable Canadian securities regulations. All statements other than statements of historical fact herein, including, without limitation, statements regarding the company’s plans, goals or objectives and future exploration, development, potential mineralization, exploration results and future plans are forward-looking statements that involve various risks and uncertainties. There can be no assurance that such statements will prove to be accurate, and actual results and future events could differ materially from those anticipated in such statements. Readers are advised not to place an undue reliance on forward-looking statements.

Corporate Snapshot

Shares Outstanding <i>(October 31, 2025)</i>	176.3m
Market Capitalization <i>(C\$0.27 – Oct 31 2025)</i>	C\$47.6 m
Options <i>(C\$0.20 – C\$0.34)</i>	10.2 m
Warrants <i>(C\$0.17 – C\$0.42)</i>	10.8 m
Fully Diluted <i>(October 31, 2025)</i>	197.2 m
Working Capital <i>(June 30, 2025)</i>	C\$3.3 m*

* includes marketable securities



**Insiders
own
over 60%**

Key People

Robert T. Boyd
President, CEO & Director

Darren O'Brien
Vice President Exploration

Teresa Cheng
CFO & Corporate Secretary

Richard Gilliam
Director

H. Ross Arnold
Director

Robert Pease
Director

J. Christopher Mitchell
Director

Reliance Gold Project Program Highlights - To Date

32 km of diamond drilling has delivered a significant high-grade gold discovery in a easily accessible productive Gold Camp

Gold system is now over **1.5 km of trend and 1.1 km vertically** – Excellent hit statistics

2025 drilling confirms Eagle and Imperial are the same structural envelope with Crown intersections of **7.61 gpt gold over 5.7 m & 8.01 gpt gold over 10.5 m**

3D modelling complete and Independent MRE and metallurgy in progress

2024 Drill Discovery of the Lower Imperial with **7.18 gpt Gold over 8.3 m** – opens potential for “wide open” parallel structure & the deepest gold intersection to date

2025 New Targeting successful – new Au-Sb bedrock targets discovered/expanded.

Finalized 100% ownership – maximum 1% NSR after optional buydown

Project Costs to date **less than \$15 million** after Tax Credits - low unit discovery metrics?

Reliance Gold Project - 2025 Goals

**7,000 m Diamond Drilling
Royal Shear (Imperial to Eagle)**

2025 Goal

Infill, Expand & 3D model for Conceptual OP
Expand 2024 Lower Imperial Discovery
Expand Royal Shear to Depth for UG Future

Maiden Mineral Resource

2025 Goal

Inaugural open pit resource

Representative Metallurgy

2025 Goal

Demonstrate ability to consistently deliver
high grade gold concentrate

New Discovery Growth

2025 Goal

Advance SE Surface Discovery to Drilling
Acquire Permit for Olympic Drilling
New Olympic Target Definition

Reliance Gold Project – Ideal Location

Bralorne Orogenic Camp, Gold Bridge, B.C.

New Surface Discovery

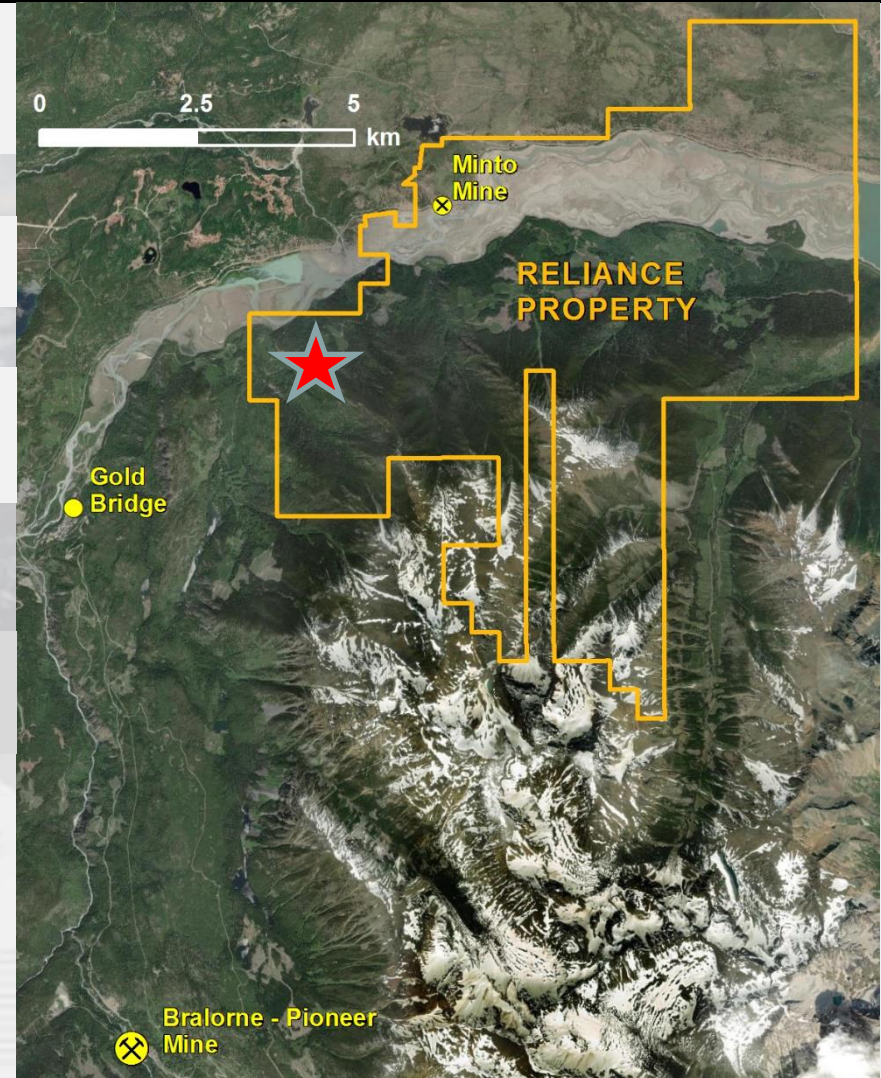
10 km from historic Bralorne Camp
(+4 million ounces of historic production)



4 hour Drive
from Vancouver

5 km from
La Joie Hydro
Dam

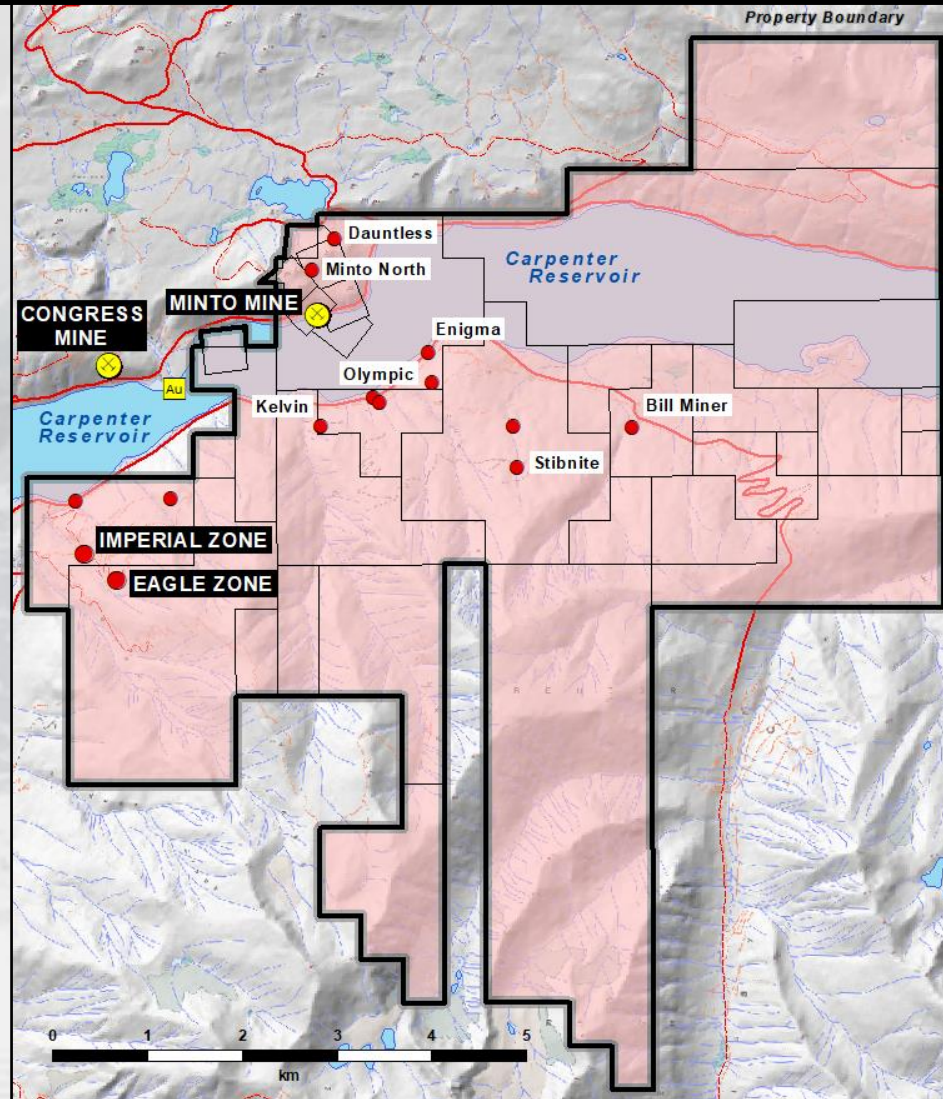
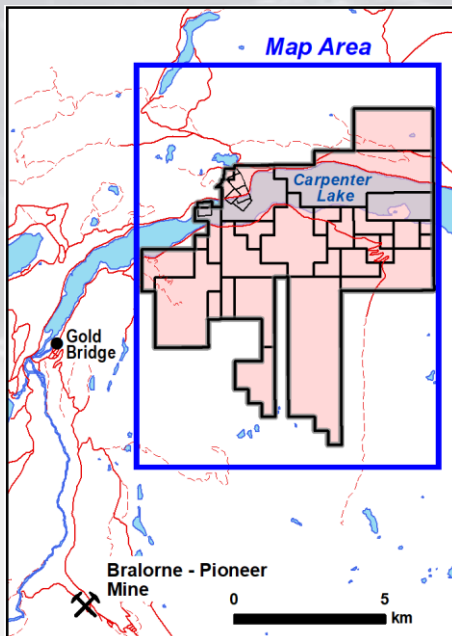

Imperial and
Eagle Zones



Reliance Gold Project, BC 100% Owned – 5,505 Hectares

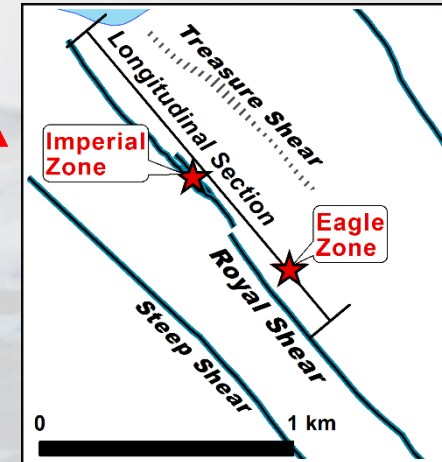
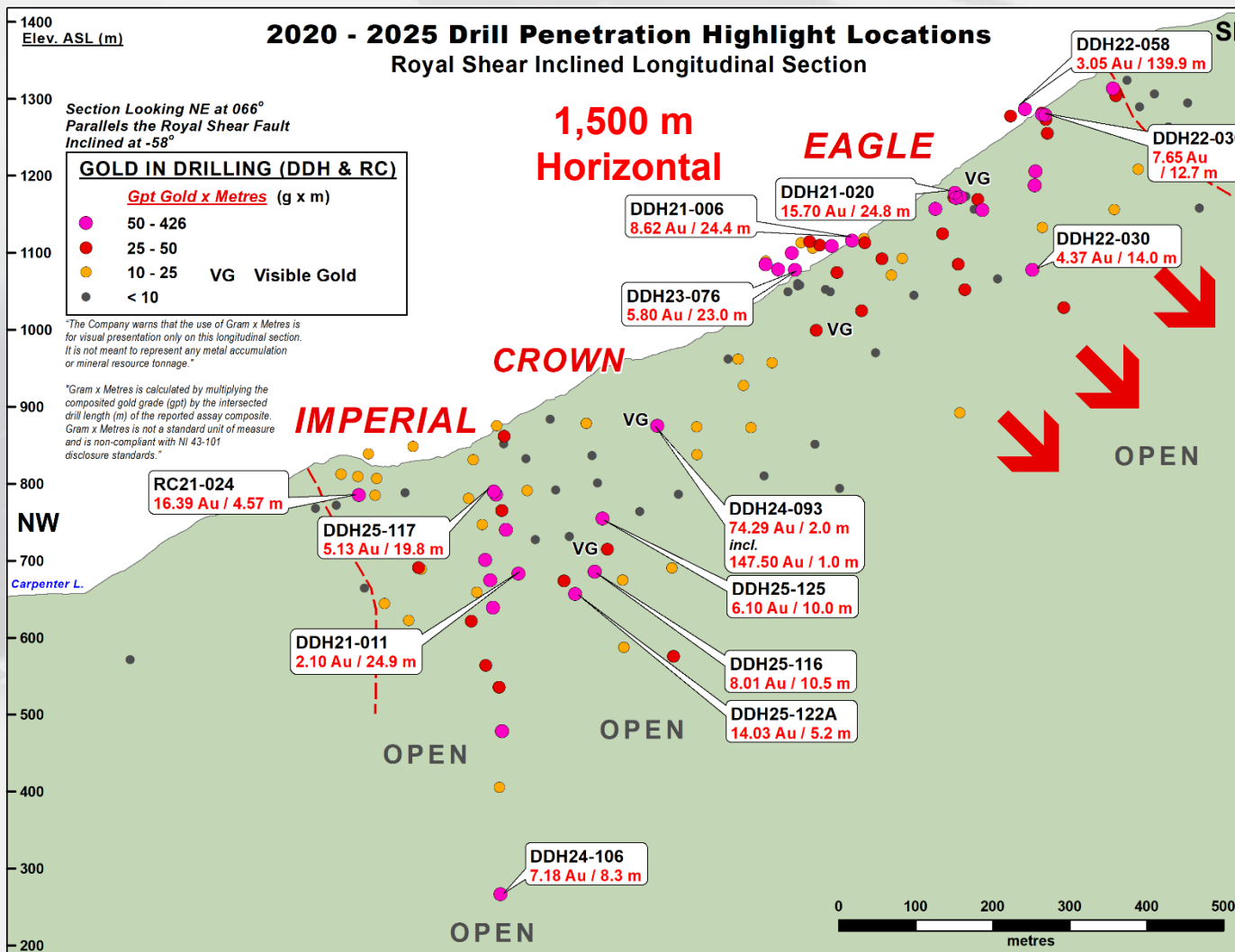
**District Consolidation of
Historic & Accessible
Gold & Antimony
Prospects**

**A “Shallow” Orogenic
Setting**



Reliance Gold Project

Royal Shear - Inclined Longitudinal Section Highlights



1,100 m Vertical

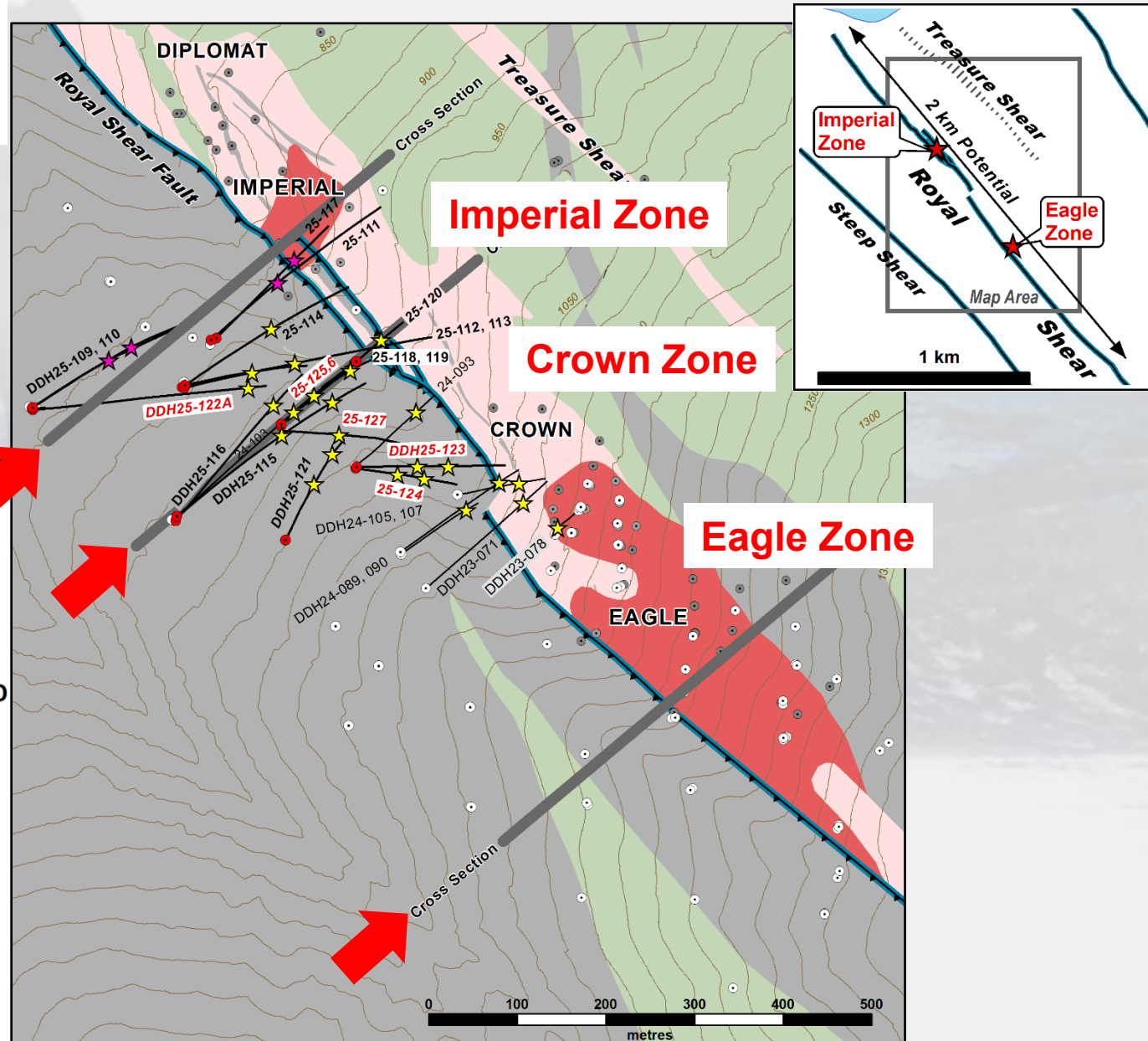
Reliance Gold Project, BC – DDH Statistics

1. Completed **127 Diamond** Drill Holes between 2021 to 2025
2. Best Near-Surface Drill holes at the **Eagle Area – SIGNIFICANT DISCOVERY**
 - 15.7 gpt Gold over 24.8 m including 26.96 gpt Gold over 4.1 m
 - 8.62 gpt Gold over 24.4 m including 17.02 gpt Gold over 4.3 m
 - 8.41 gpt Gold over 12.0 m, 8.05 gpt Gold over 13.0 m
 - 6.51 gpt Gold over 14.0 m, including 36.3 gpt Gold over 1.0
 - 6.20 gpt Gold over 7.8 m, including 10.70 gpt Gold over 2.6 m
 - 5.15 gpt Gold over 21.6 m, including 9.97 gpt Gold over 5.9 m
 - 3.05 gpt Gold / 139.9 m, 4.16 gpt Gold / 30.0 m, 5.8 gpt Gold / 23 m
3. **Imperial, Crown & Lower Imperial Zones** – majority mineralized
 - 8.47 gpt Gold over 24.9 m including 16.27 gpt Gold over 10.5 m
 - 6.74 gpt Gold over 21.4 m including 10.11 gpt Gold over 12.4 m
 - 8.98 gpt Gold over 9.3 m including 12.44 gpt Gold over 6.0 m
 - 17.28 gpt Gold over 4.2 m including 35.20 gpt Gold over 1.3 m
 - 7.18 gpt Gold over 8.3 m including 28.08 gpt Gold over 1.7 m
4. **86 of 127 DDH** have “significant” intersections (plus 10 gram*metres)
5. **24 of 127 DDH** have “excellent” drill intersections (plus 60 gram*metres)
6. **12 of 127 DDH** have “outstanding” drill intersections (plus 100 gram*metres)

Reliance Gold Project, B.C. Best Diamond Drill Holes 2021 to 2025

<u>Zone & DDH</u>	<u>From</u>		<u>Au g/t / Metre</u>
Eagle - 22-058	32.1		3.05 gpt / 139.9m
Eagle - 21-020	33.3		15.70 gpt / 24.8m
Imperial - 21-009	161.0		8.47 gpt / 24.9m
Eagle - 21-006	25.6		8.62 gpt / 24.4m
Crown - 24-093	159.9		74.29 gpt / 2.0m
Imperial - 25-109	336.0		6.74 gpt / 21.8m
Eagle - 23-076	9.3		5.80 gpt / 23.0m
Eagle - 22-027	109.2		4.16 gpt / 30.0m
Eagle - 24-100	9.9		5.15 gpt / 21.6m
Eagle - 22-026	80.4		8.06 gpt / 13.5m
Imperial - 25-117	164.8		5.13 gpt / 19.8m
Eagle - 22-024	27.0		8.41 gpt / 12.0m
Eagle - 22-036	35.4		7.65 gpt / 12.7m
Eagle - 24-104	7.0		6.51 gpt / 14.0m
Eagle - 22-031	124.9		7.58 gpt / 11.9m
Eagle - 22-045	35.1		7.31 gpt / 11.6m
Eagle - 21-004	1.0		4.44 gpt / 19.0m
Crown - 25-116	288.7		8.01 gpt / 10.5m
Imperial - 23-065	212.8		8.98 gpt / 9.3m
Eagle - 22-028	97.0		2.59 gpt / 31.6m
Crown - 25-122	322.7		14.03 gpt / 5.2m
Imperial - 23-066	306.5		17.28 gpt / 4.2m
Imperial - 24-106	608.3	Lower Imperial Discovery	4.47 gpt / 15.3m
Crown - 25-125	176.0		6.10 gpt / 10.0m

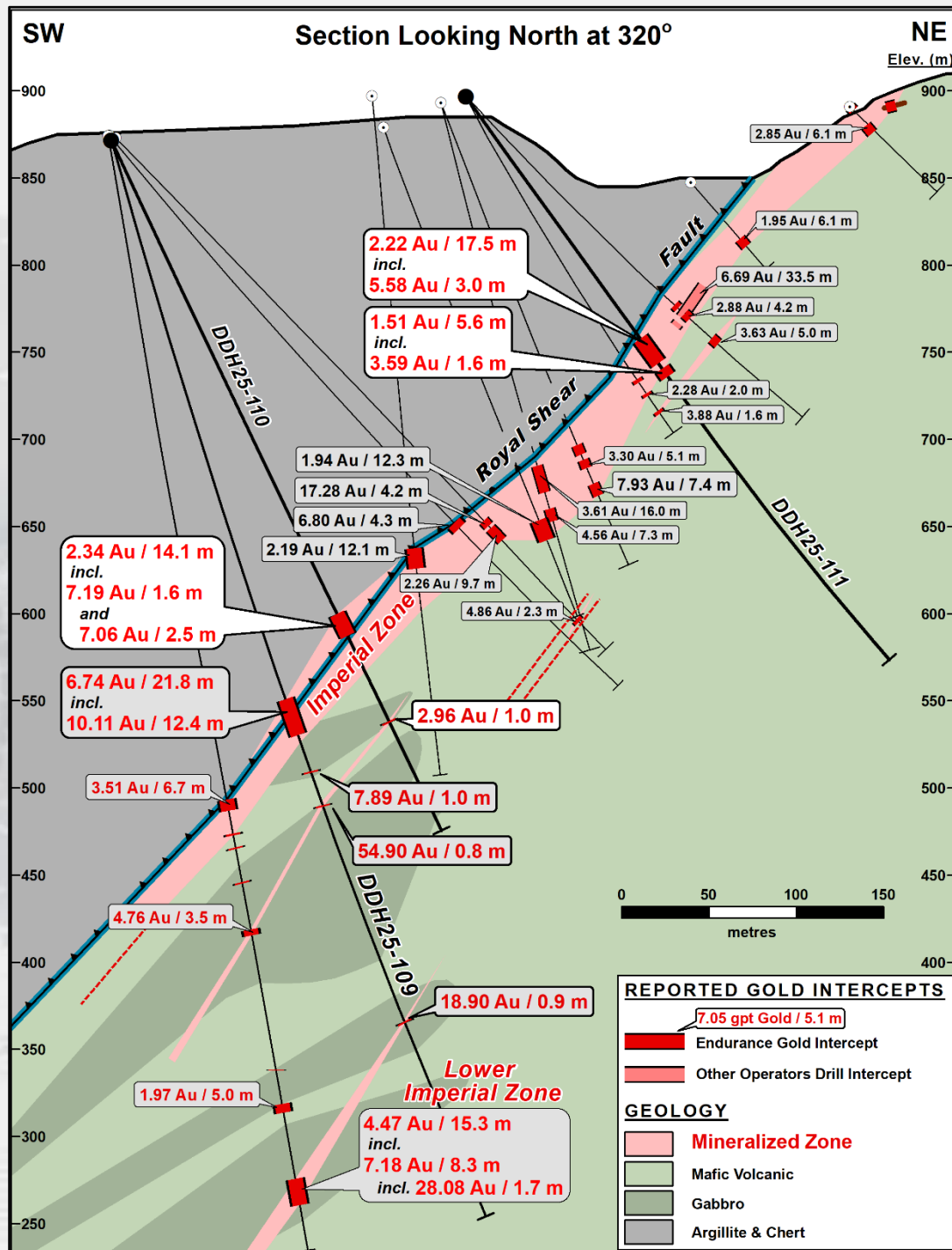
Reliance Gold Project - 2025 Drill Intersection Royal Shear Geology & Cross Sections



Reliance Gold Project

Imperial Zone

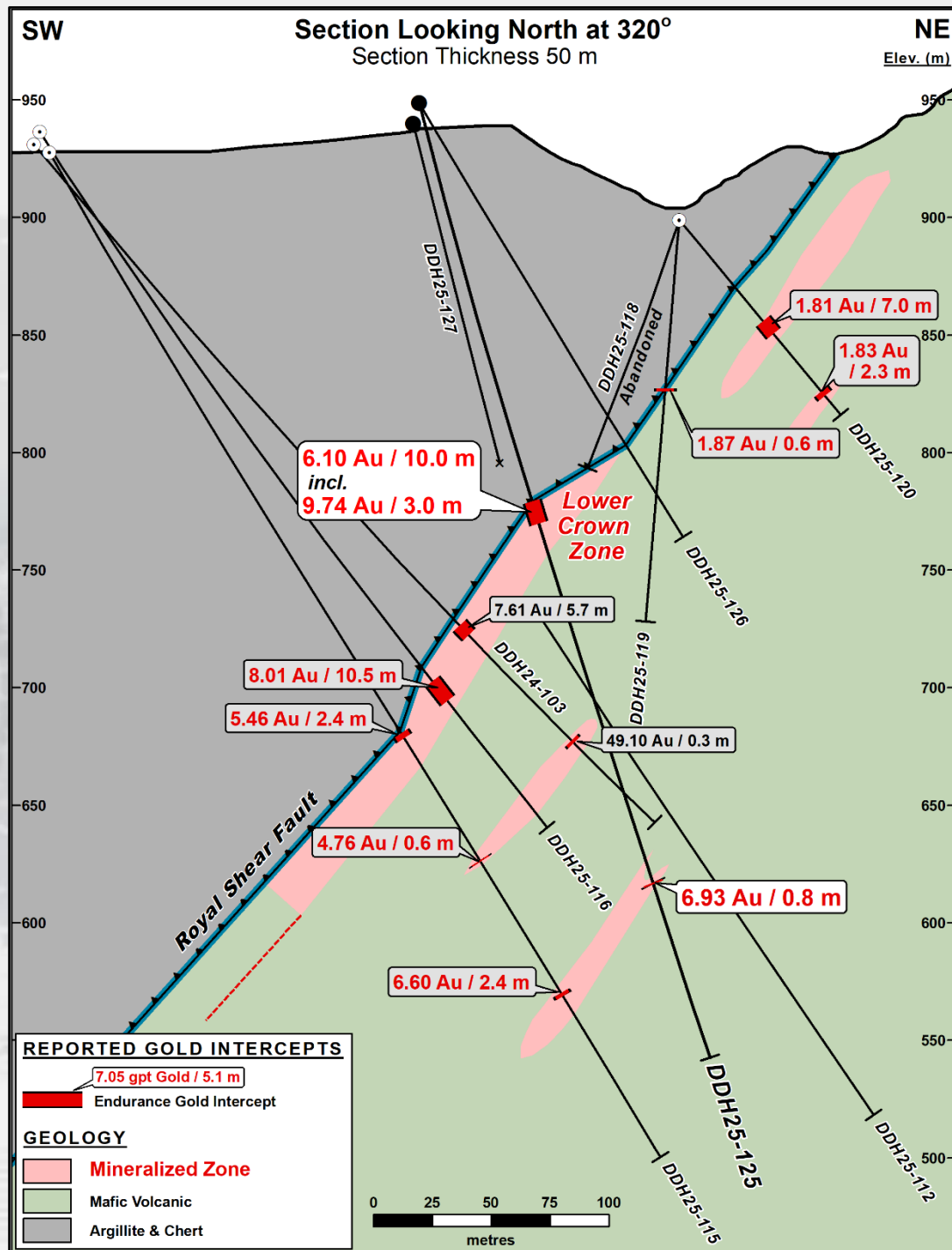
2025 Drill Cross-Section DDH25-109, 110, 111



Reliance Gold Project

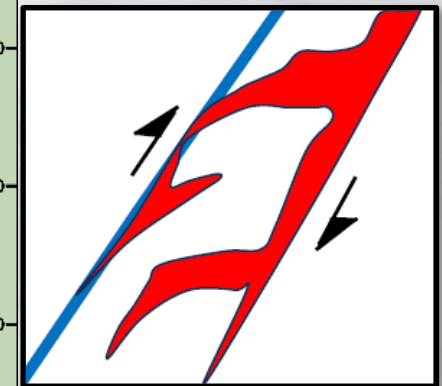
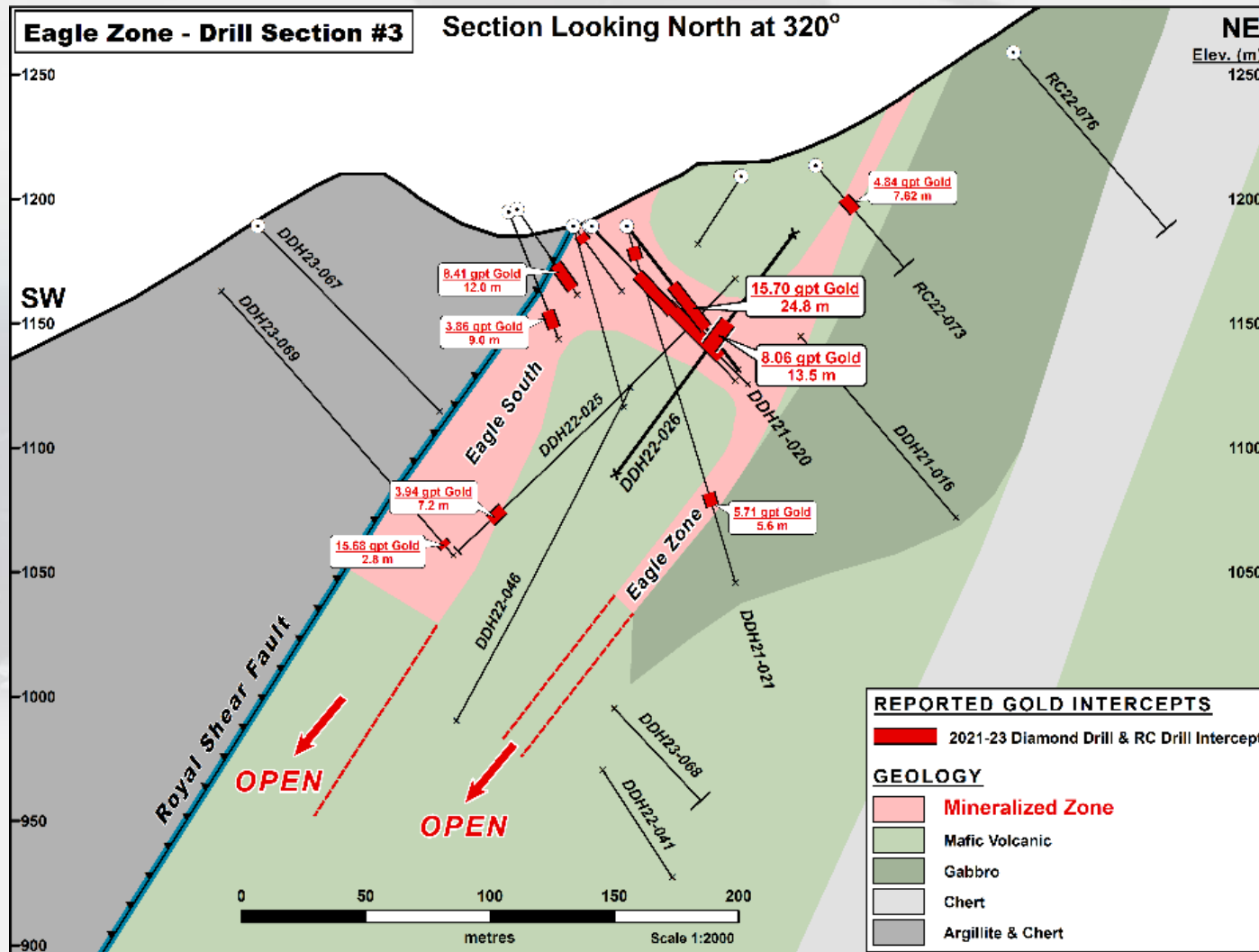
Crown Zone

2025 Drill Cross-Section



Reliance Gold Project

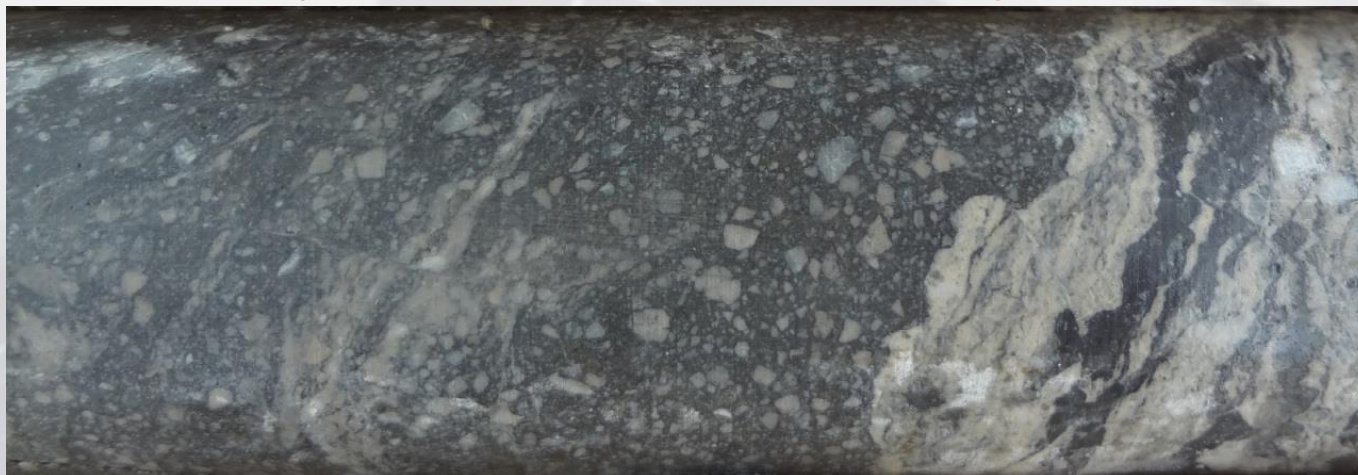
Eagle Cross Sections #3 – (700 M south of Imperial)



Reliance Interpretation
at Eagle Zone
(Rhys 2024)

Reliance Gold Project Mineralized Breccia Textures

Gold - Arsenopyrite Quartz Breccia (Cataclastite) 6.19 gpt Gold over 0.85 m



**DDH22-027
@ 116.4m**

**Fine grained “crushed”
pyrite, aspy, stibnite with
fine grained quartz
breccia fragments &
late ankerite veins**

Gold - Arsenopyrite “Cockade or Coxcomb” Quartz Breccia 14.35 gpt Au /2.0 m



**DDH22-031
@ 128 m**

**late phase of “open space”
cockade quartz with
stibnite, aspy, pyrite
infilling mineralized altered
mafic volcanic fragments**

Reliance Gold Project Imperial Zone DDH25-109

From	To	Length	Sample Number	Au_USE g/t	Ag_USE ppm	Sb_USE ppm
332.5	333.6	1.1	L644809	0.001	0.03	1.7
333.6	335	1.4	L644811	0.015	0.14	25
335	336	1	L644812	0.064	0.19	11.5
336	336.6	0.6	L644813	3.3	1.16	123.5
336.6	338	1.4	L644814	0.009	0.08	14
338	339.3	1.3	L644815	0.106	0.22	49.5
339.3	340.4	1.1	L644816	5.79	2.78	216
340.4	342	1.6	L644817	8.58	6.62	873
342	343.7	1.7	L644818	12.85	12.2	528
343.7	344.5	0.8	L644819	14.1	5.17	206
344.5	345.5	1	L644821	9.7	4.6	800
345.5	346.5	1	L644822	9.64	8.01	1105
346.5	347.3	0.8	L644823	6.06	12.05	8610
347.3	348	0.7	L644824	0.905	1.76	800
348	349.8	1.8	L644825	13.95	9.34	10400
349.8	350.7	0.9	L644826	6.62	4.01	298
350.7	351.7	1	L644827	16.25	4.4	327
351.7	353	1.3	L644828	2.38	0.91	137.5
353	355	2	L644829	0.056	0.16	23.8
355	356.3	1.3	L644831	0.449	0.44	51.7
356.3	357.8	1.5	L644832	10.5	4.43	2710
357.8	359	1.2	L644833	0.023	0.64	64.4
359	359.9	0.9	L644834	0.017	0.33	13
359.9	361	1.1	L644835	0.005	0.33	9.86
379	380	1	L644836	0.005	0.02	7.74
380	381	1	L644837	7.89	0.41	241
381	382	1	L644838	0.027	0.02	20.3

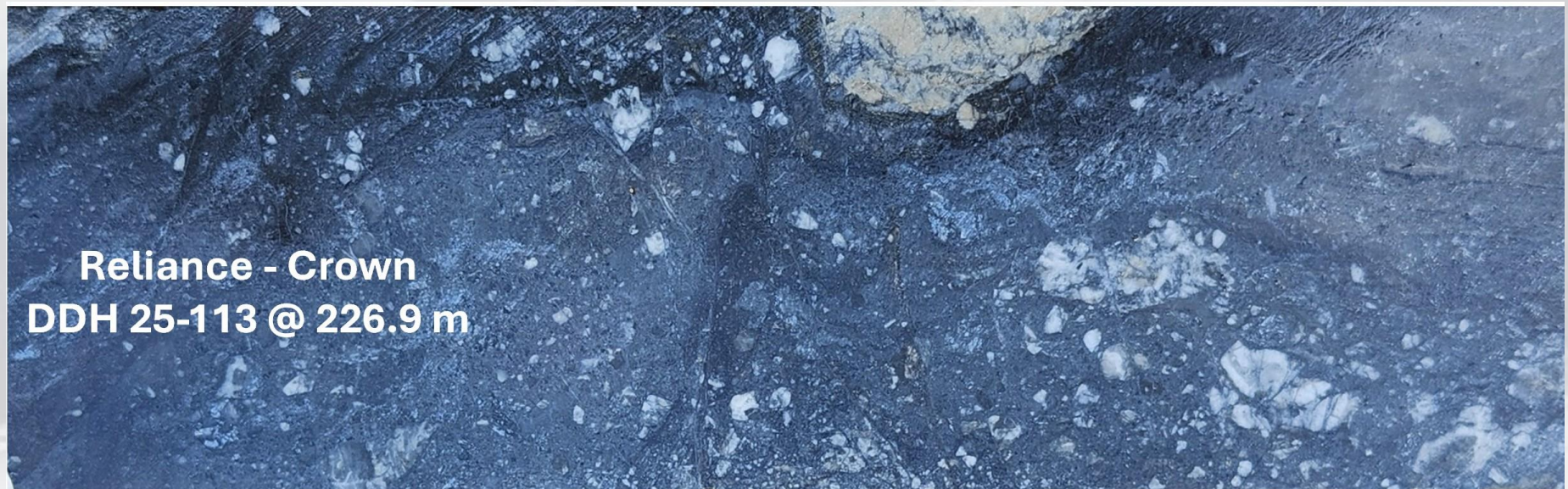
**6.74 gpt Au
& 0.16% Sb
over 21.8 m**

**Includes
10.11 gpt Au
& 0.25% Sb
over 12.4 m**

Reliance Gold Project

Crown Zone DDH25-113

Stibnite Rich Cataclastite Breccia – 5.63 gpt Gold, 5.12% Antimony / 3.3 m



Reliance Gold Project

Upper Crown Discovery in DDH24-093

NQ Core **Visible gold** in Quartz Vein – **147.5 gpt gold / 1.0 m**



Reliance Gold Project – Antimony Compilation

10.1 m width, 4.55 gpt Gold & 0.20% Antimony

Weighted Average of 199 DDH, RC & Channel Composites

Best Assay Composites with Antimony (2020 to 2024)

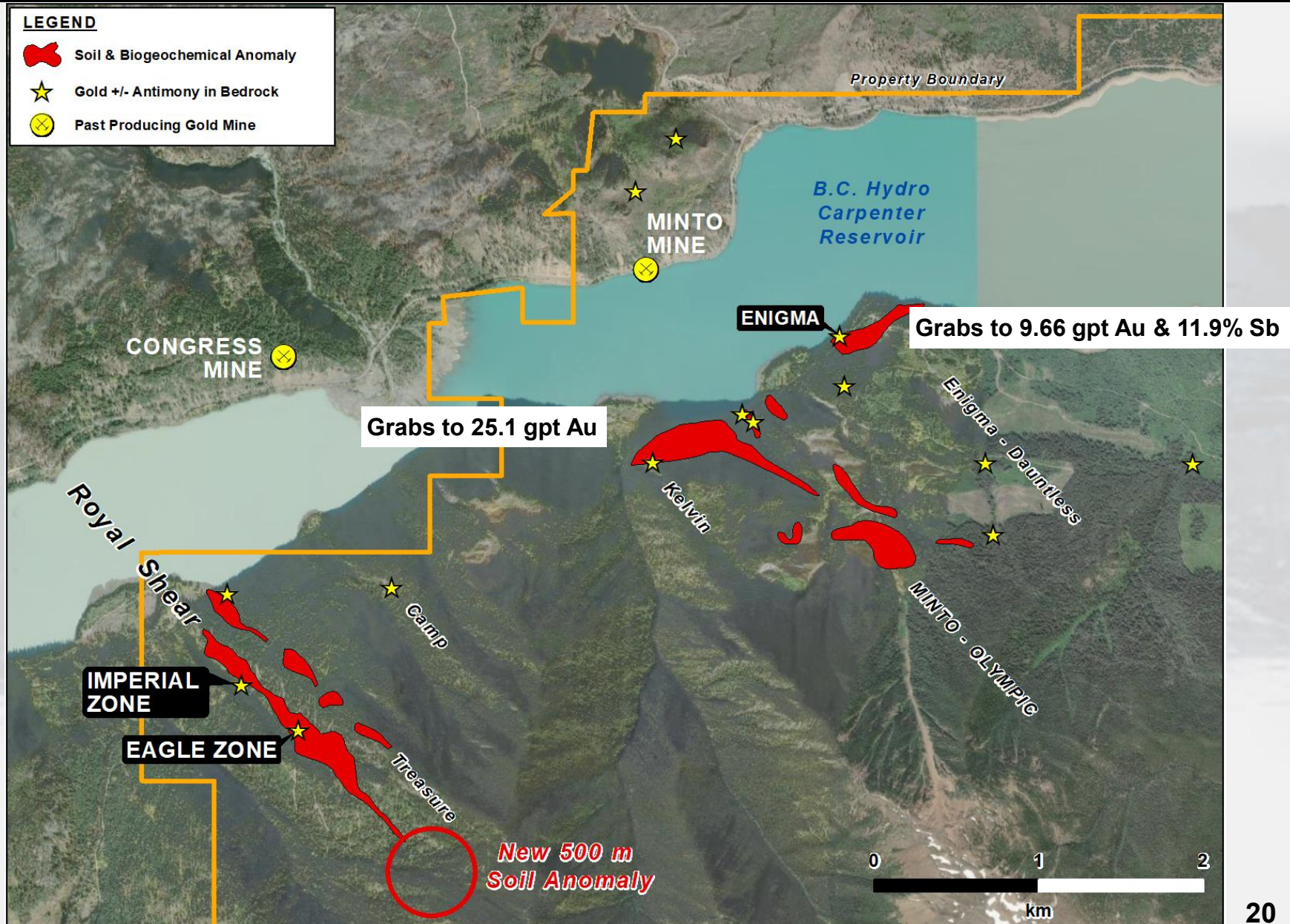
Hole / Roadcut ID	From (m)	To (m)	Length (m)	Au (gpt)	Antimony %	AuEQ (gpt)	Type
2020 Eagle1	61.3	101.8	40.5	4.98	0.54	6.14	Surface Channels
2022 EG07-01	34.0	42.0	8.0	6.35	1.49	9.57	Surface Channels
DDH21-003	0.8	17.8	17.0	4.87	0.51	5.96	DDH
DDH21-020	33.3	58.1	24.8	15.70	0.45	16.66	DDH
DDH22-036	35.4	48.1	12.7	7.65	0.48	8.69	DDH
DDH23-076	9.3	22.0	12.7	8.52	0.39	9.36	DDH
DDH24-091	370.5	371.0	0.5	2.16	19.20	43.50	DDH
DDH24-104	7.0	21.0	14.0	6.51	0.35	7.26	DDH
RC20-014	0.0	18.3	18.3	4.46	0.54	5.63	RC
RC20-015	0.0	16.8	16.8	7.39	0.46	8.37	RC
RC21-037	19.8	44.2	24.4	4.88	0.36	5.66	RC
RC22-062	44.2	82.3	38.1	5.40	0.26	5.95	RC

Composites are reported over a drill length with a 1.0 gpt gold-equivalent (“AuEQ”) cut-off.

AuEQ calculated using commodity prices of US\$2,600/oz Au and US\$18,000/tonne antimony.

Reliance Gold Project, B.C.

Eagle, Imperial & the Olympic Geochemical Anomalies



Reliance Gold Project Olympic Claims - Enigma Showing

4.1 gpt Gold
6.78% Antimony



Enigma Vein Grab Sample with Stibnite Crystals

Reliance Gold Project, BC Conclusions

- An outstanding New Exploration Discovery in an historically productive multi-million ounce Orogenic Gold Camp.
- Wide pervasive iron-carbonate sericite alteration, sulphidization, breccia, and antimony indicate an “Epizonal” Orogenic setting in a “brittle” structural regime – Epizonal comparables to Fosterville, Australia and Newfoundland discoveries.
- Model provides potential for a major gold system with depth continuity.
- Drilling has delivered a high percentage of significant and excellent gold intersections with associated antimony. – Success continues with 2025 DDH
- Deposit extends **1.5 km laterally X 1.1 km vertically**. Eagle, Crown & Imperial confirmed as continuous structural regime
- New 2024 Discoveries at **Lower Crown** and **Lower Imperial** Zones. Expand system potential
- New parallel surficial structural trends developing as high priority drill targets



www.endurancgold.com

Robert T. Boyd, P.Geo. is a qualified person as defined in National Instrument 43-101 and supervised the compilation of the information forming the basis for this summary.

Suite 1212 – 666 Burrard Street
Vancouver, BC V6C 2X8 Canada
Toll Free Phone: 877-624-2237

EDG: TSX.V | ENDGF: OTCQB | Frankfurt: 3EG