



North American Focused Gold Exploration Company

January 2026



EDG: TSX.V | ENDGF: OTCQB | Frankfurt: 3EG

Corporate Disclosure

The company is an exploration stage mineral resource exploration company and none of its mineral projects have yet to be proven to be economic. The contents of this presentation is for information purposes only and does not constitute an offer to sell or a solicitation to purchase any securities referred to herein.

Forward-looking Statements

This presentation contains “forward-looking information” within the meaning of applicable Canadian securities regulations. All statements other than statements of historical fact herein, including, without limitation, statements regarding the company’s plans, goals or objectives and future exploration, development, potential mineralization, exploration results and future plans are forward-looking statements that involve various risks and uncertainties. There can be no assurance that such statements will prove to be accurate, and actual results and future events could differ materially from those anticipated in such statements. Readers are advised not to place an undue reliance on forward-looking statements.

Corporate Snapshot

Shares Outstanding <i>(December 31, 2025)</i>	176.3m
Market Capitalization <i>(C\$0.345 – Dec 31 2025)</i>	C\$60.8 m
Options <i>(C\$0.20 – C\$0.34)</i>	10.2 m
Warrants <i>(C\$0.17 – C\$0.32)</i>	10.8 m
Fully Diluted <i>(December 31, 2025)</i>	197.2 m
Working Capital <i>(Sept 30, 2025)</i>	C\$2.3 m



**Insiders
own
over 60%**

Key People

Robert T. Boyd
President, CEO & Director

Darren O'Brien
Vice President Exploration

Teresa Cheng
CFO & Corporate Secretary

Richard Gilliam
Director

H. Ross Arnold
Director

Robert Pease
Director

J. Christopher Mitchell
Director

Endurance Gold Corporation – Opportunities

Endurance Gold – An Opportunity Generator with Pre-Existing Projects Divested for Cash, Shares, &/or Royalty such as:

- **Rattlesnake Hills Au, WY – SOLD** to GFG Resources (TSX-V;GFG)
- **Pardo Paleoplacer Au, Ontario – SOLD** to Inventus Mining (TSX-V;IVS)

Current **100% controlled** Drill-Stage Projects in excellent jurisdictions are;

- **Elephant Mtn Gold Project**, Central Alaska – Tombstone Gold Belt - Intrusive Hosted Gold - 0.40 gpt Au over 147 m – 6 Large Targets - needs +\$2 Million drilling **FOR SALE, JOINT VENTURE or SPINOUT**
- **Bandito Rare-Earth Niobium**, Yukon – Syenite Intrusive hosted - **HOLD**
- **Reliance Gold Project**, Gold Bridge BC – “Epizonal” Orogenic
The Exploration and Funding Focus for the Company
SELF FUNDED

Endurance Gold Corporation – Core Gold Assets

HIGHLIGHTS AND PLANS

100% controlled - Drill-ready Gold Projects - top-ranked jurisdictions.

Reliance Gold Project, B.C. – Epizonal Orogenic – 2025 Drilling

- Next to a former +4 m ounce producer
- 32 km of DDH drilling completed – up to **15.7 gpt Gold over 24.8 m**
- **Over 2.5 km +100 ppb** gold-in-soil - strong system strike potential
- **86 of 127 DDH** have significant intersections (>3.4 gpt Au over >3m)
- Maiden Resource Expected in January 2026

Elephant Mtn Project, Alaska – Intrusive Hosted Gold

- Within the Yukon-Alaska Tombstone Gold Belt
- Six drill targets (kilometre scale) within an emerging 12 x 5 km district.
- Drill intersections such as **0.40 gpt Gold over 147 m** and **4.1 gpt Gold over 4.6 m**
- Permitted - Further drilling warranted
- High Grade structures with Antimony

**AVAILABLE FOR SPIN OUT, JOINT
VENTURE OR STRATEGIC ALTERNATIVE**

Reliance Gold Project – Ideal Location

Bralorne Orogenic Camp, Gold Bridge, B.C.

New Surface Discovery

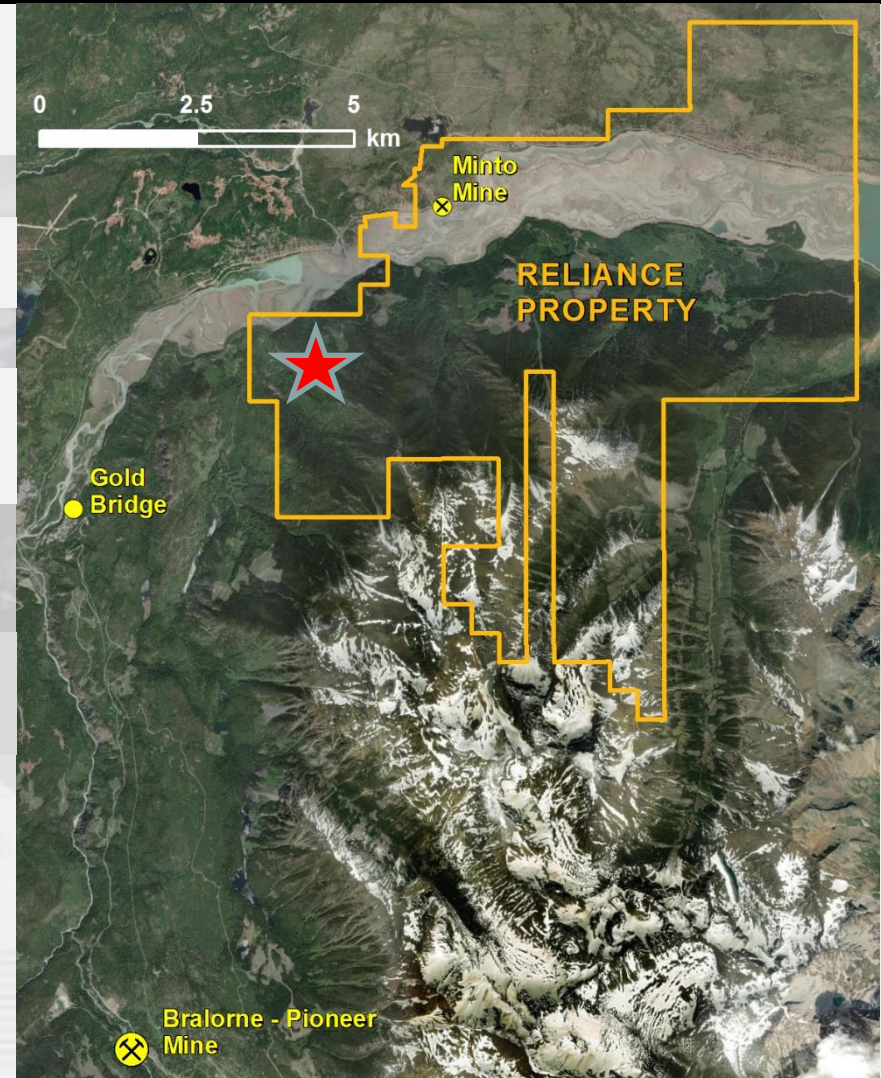
10 km from historic Bralorne Camp
(+4 million ounces of historic production)



4 hour Drive
from Vancouver

5 km from
La Joie Hydro
Dam

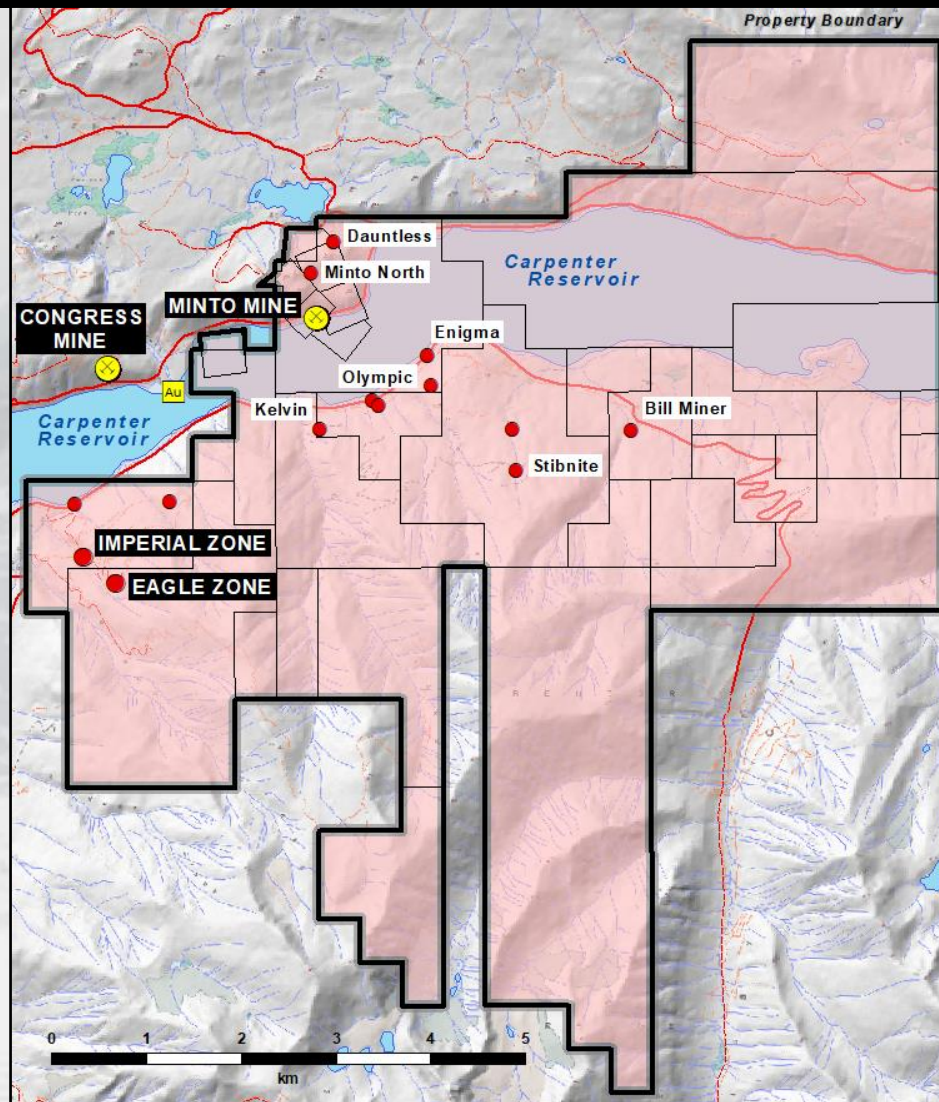
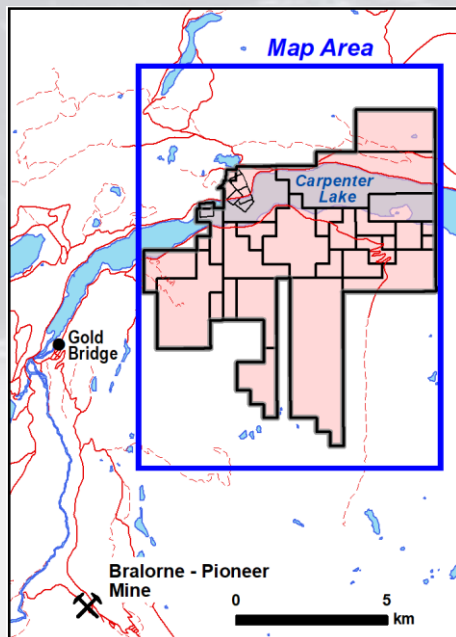

Imperial and
Eagle Zones



Reliance Gold Project, BC 100% Owned – 5,505 Hectares

**District Consolidation of
Historic & Accessible
Gold & Antimony
Prospects**

**A “Shallow” Orogenic
Setting**



Reliance Gold Project Exploration Program Highlights

32 km of diamond drilling has delivered a significant high-grade gold discovery in a easily accessible productive Gold Camp

Gold system is now over **1.5 km of trend and 1.1 km vertically** – Excellent hit statistics

2025 drilling confirms Eagle and Imperial are the same structural envelope with Crown intersections of **7.61 gpt gold over 5.7 m & 8.01 gpt gold over 10.5 m**

3D modelling complete and Independent MRE and metallurgy expected January 2026

Drill Discovery of the Lower Imperial with **7.18 gpt Gold over 8.3 m** – opens potential for “wide open” parallel structure & the deepest gold intersection to date

2025 New Targeting successful – new Au-Sb bedrock targets discovered/expanded.

Finalized 100% ownership – maximum 1% NSR after optional buydown

Project Costs to date **less than \$15 million** after Tax Credits - low unit discovery metrics?

Reliance Gold Project - 2025 Goals Achievable

**7,000 m Diamond Drilling
Royal Shear (Imperial to Eagle)**

2025 Goal

Infill, Expand & 3D model for Conceptual OP
Expand 2024 Lower Imperial Discovery
Expand Royal Shear to Depth for UG Future

Maiden Mineral Resource

2025 Goal

Inaugural +2 gpt open pit resource

RESULTS PENDING

Representative Metallurgy

2025 Goal

Demonstrate ability to consistently deliver
high grade gold concentrate

RESULTS PENDING

New Discovery Growth

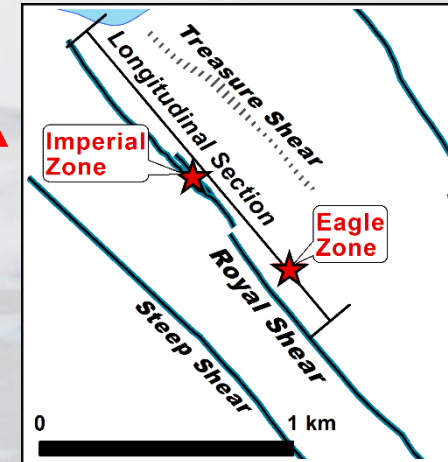
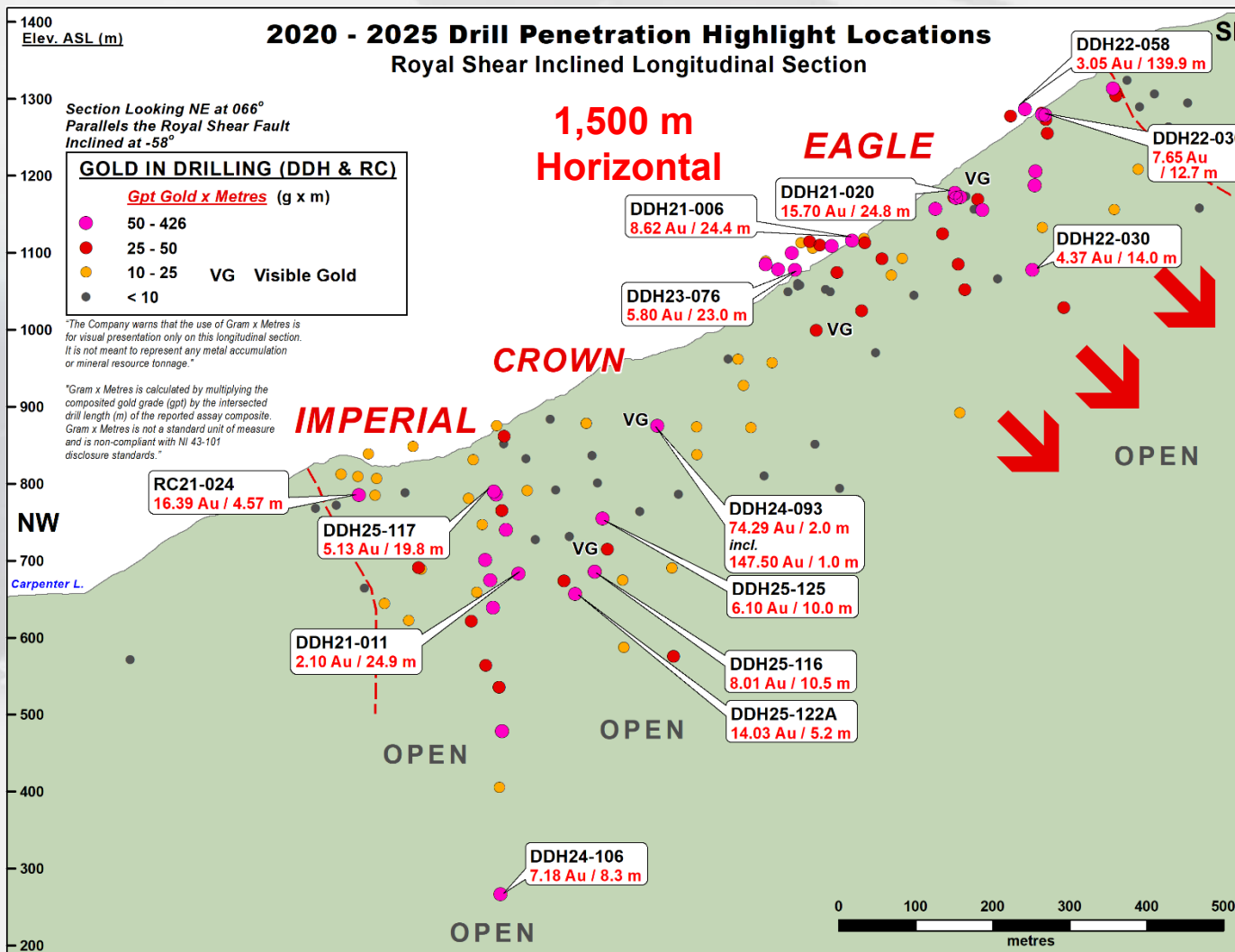
2025 Goal

Advance SE Surface Discovery to Drilling
Acquire Permit for Olympic Drilling
New Olympic Target Definition

RESULTS PENDING

Reliance Gold Project

Royal Shear - Inclined Longitudinal Section Highlights



1,100 m Vertical

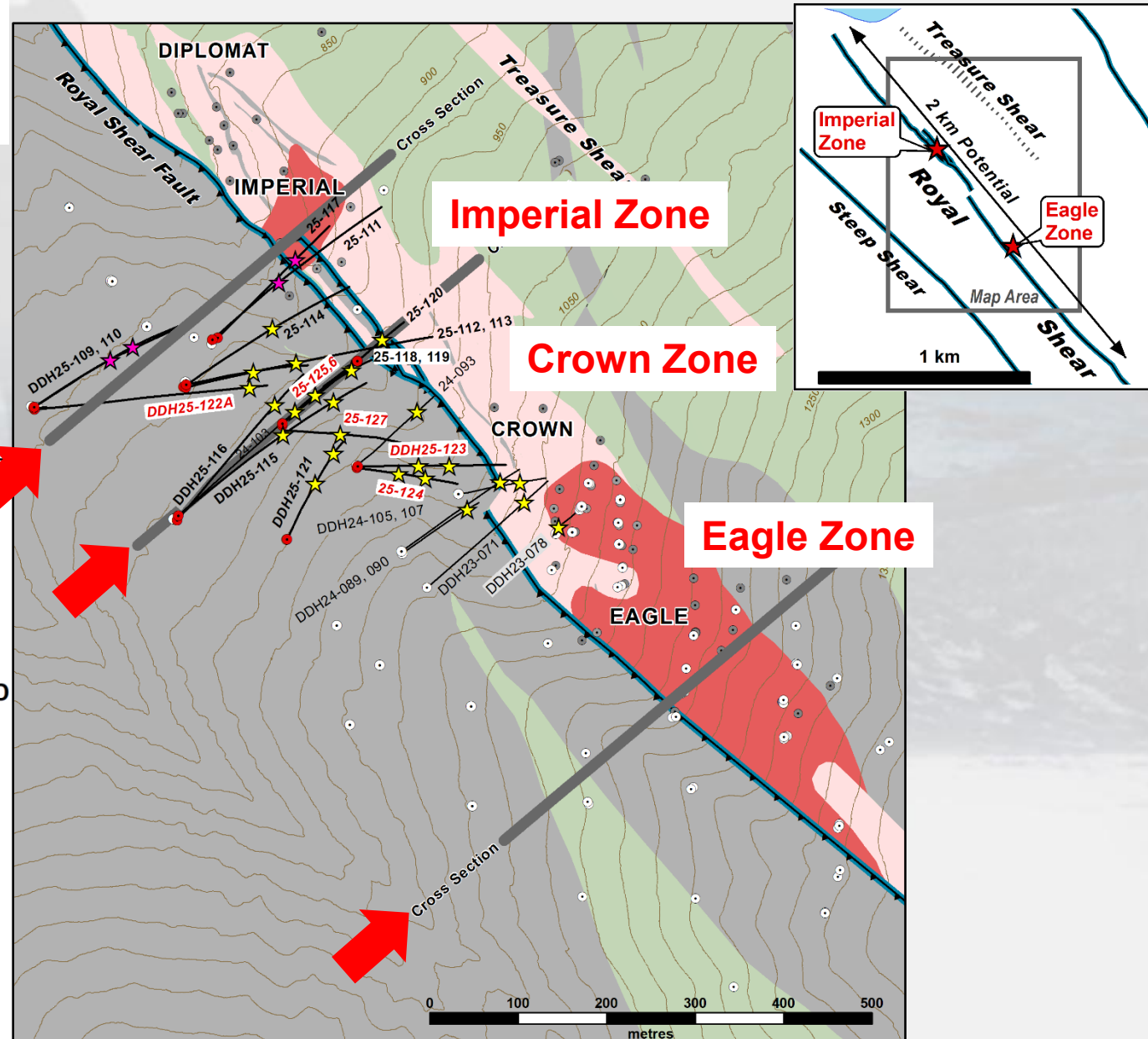
Reliance Gold Project, BC – DDH Statistics

1. Completed **127 Diamond** Drill Holes between 2021 to 2025
2. Best Near-Surface Drill holes at the **Eagle Area – SIGNIFICANT DISCOVERY**
 - 15.7 gpt Gold over 24.8 m including 26.96 gpt Gold over 4.1 m
 - 8.62 gpt Gold over 24.4 m including 17.02 gpt Gold over 4.3 m
 - 8.41 gpt Gold over 12.0 m, 8.05 gpt Gold over 13.0 m
 - 6.51 gpt Gold over 14.0 m, including 36.3 gpt Gold over 1.0
 - 6.20 gpt Gold over 7.8 m, including 10.70 gpt Gold over 2.6 m
 - 5.15 gpt Gold over 21.6 m, including 9.97 gpt Gold over 5.9 m
 - 3.05 gpt Gold / 139.9 m, 4.16 gpt Gold / 30.0 m, 5.8 gpt Gold / 23 m
3. **Imperial, Crown & Lower Imperial Zones** – majority mineralized
 - 8.47 gpt Gold over 24.9 m including 16.27 gpt Gold over 10.5 m
 - 6.74 gpt Gold over 21.4 m including 10.11 gpt Gold over 12.4 m
 - 8.98 gpt Gold over 9.3 m including 12.44 gpt Gold over 6.0 m
 - 17.28 gpt Gold over 4.2 m including 35.20 gpt Gold over 1.3 m
 - 7.18 gpt Gold over 8.3 m including 28.08 gpt Gold over 1.7 m
4. **86 of 127 DDH** have “significant” intersections (plus 10 gram*metres)
5. **24 of 127 DDH** have “excellent” drill intersections (plus 60 gram*metres)
6. **12 of 127 DDH** have “outstanding” drill intersections (plus 100 gram*metres)

Reliance Gold Project, B.C. Best Diamond Drill Holes 2021 to 2025

<u>Zone & DDH</u>	<u>From</u>		<u>Au g/t / Metre</u>
Eagle - 22-058	32.1		3.05 gpt / 139.9m
Eagle - 21-020	33.3		15.70 gpt / 24.8m
Imperial - 21-009	161.0		8.47 gpt / 24.9m
Eagle - 21-006	25.6		8.62 gpt / 24.4m
Crown - 24-093	159.9		74.29 gpt / 2.0m
Imperial - 25-109	336.0		6.74 gpt / 21.8m
Eagle - 23-076	9.3		5.80 gpt / 23.0m
Eagle - 22-027	109.2		4.16 gpt / 30.0m
Eagle - 24-100	9.9		5.15 gpt / 21.6m
Eagle - 22-026	80.4		8.06 gpt / 13.5m
Imperial - 25-117	164.8		5.13 gpt / 19.8m
Eagle - 22-024	27.0		8.41 gpt / 12.0m
Eagle - 22-036	35.4		7.65 gpt / 12.7m
Eagle - 24-104	7.0		6.51 gpt / 14.0m
Eagle - 22-031	124.9		7.58 gpt / 11.9m
Eagle - 22-045	35.1		7.31 gpt / 11.6m
Eagle - 21-004	1.0		4.44 gpt / 19.0m
Crown - 25-116	288.7		8.01 gpt / 10.5m
Imperial - 23-065	212.8		8.98 gpt / 9.3m
Eagle - 22-028	97.0		2.59 gpt / 31.6m
Crown - 25-122	322.7		14.03 gpt / 5.2m
Imperial - 23-066	306.5		17.28 gpt / 4.2m
Imperial - 24-106	608.3	Lower Imperial Discovery	4.47 gpt / 15.3m
Crown - 25-125	176.0		6.10 gpt / 10.0m

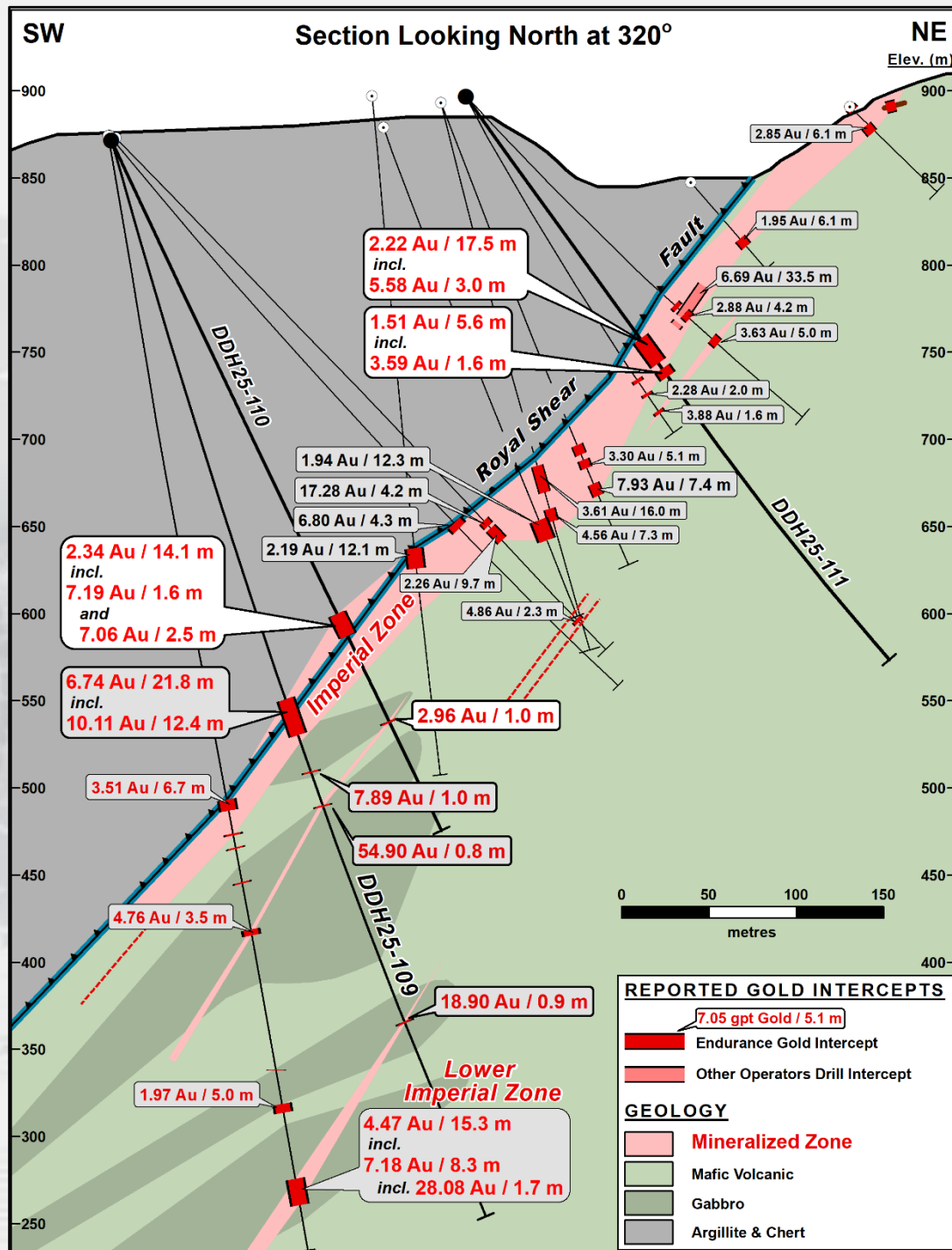
Reliance Gold Project - 2025 Drill Intersection Royal Shear Geology & Cross Sections



Reliance Gold Project

Imperial Zone

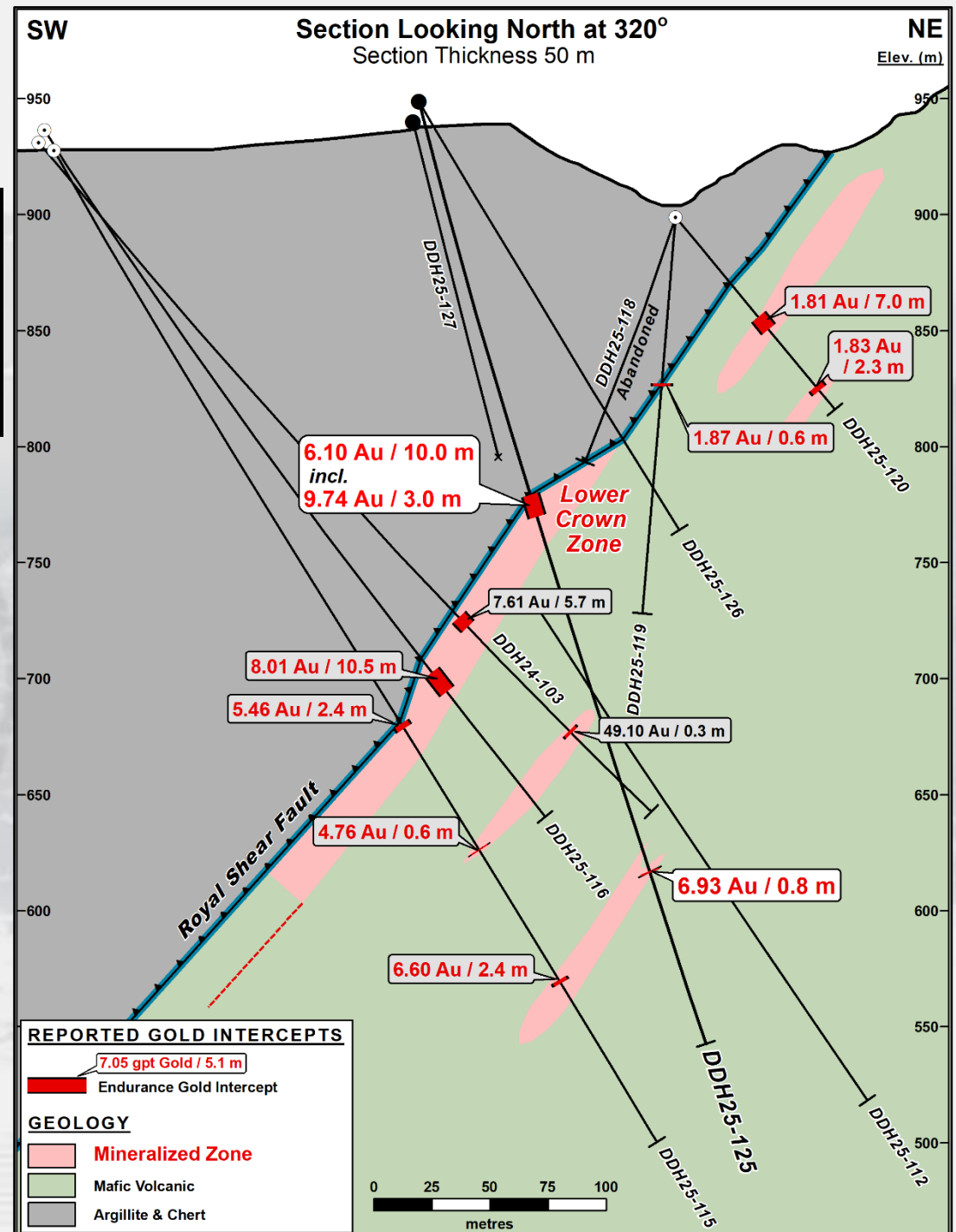
2025 Drill Cross-Section DDH25-109, 110, 111



Reliance Gold Project

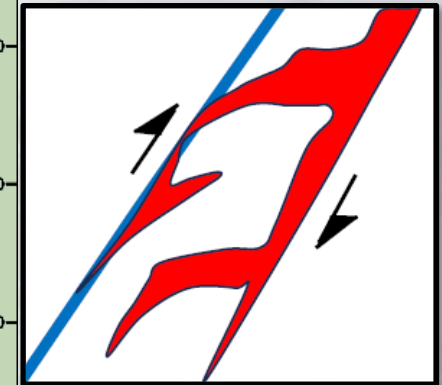
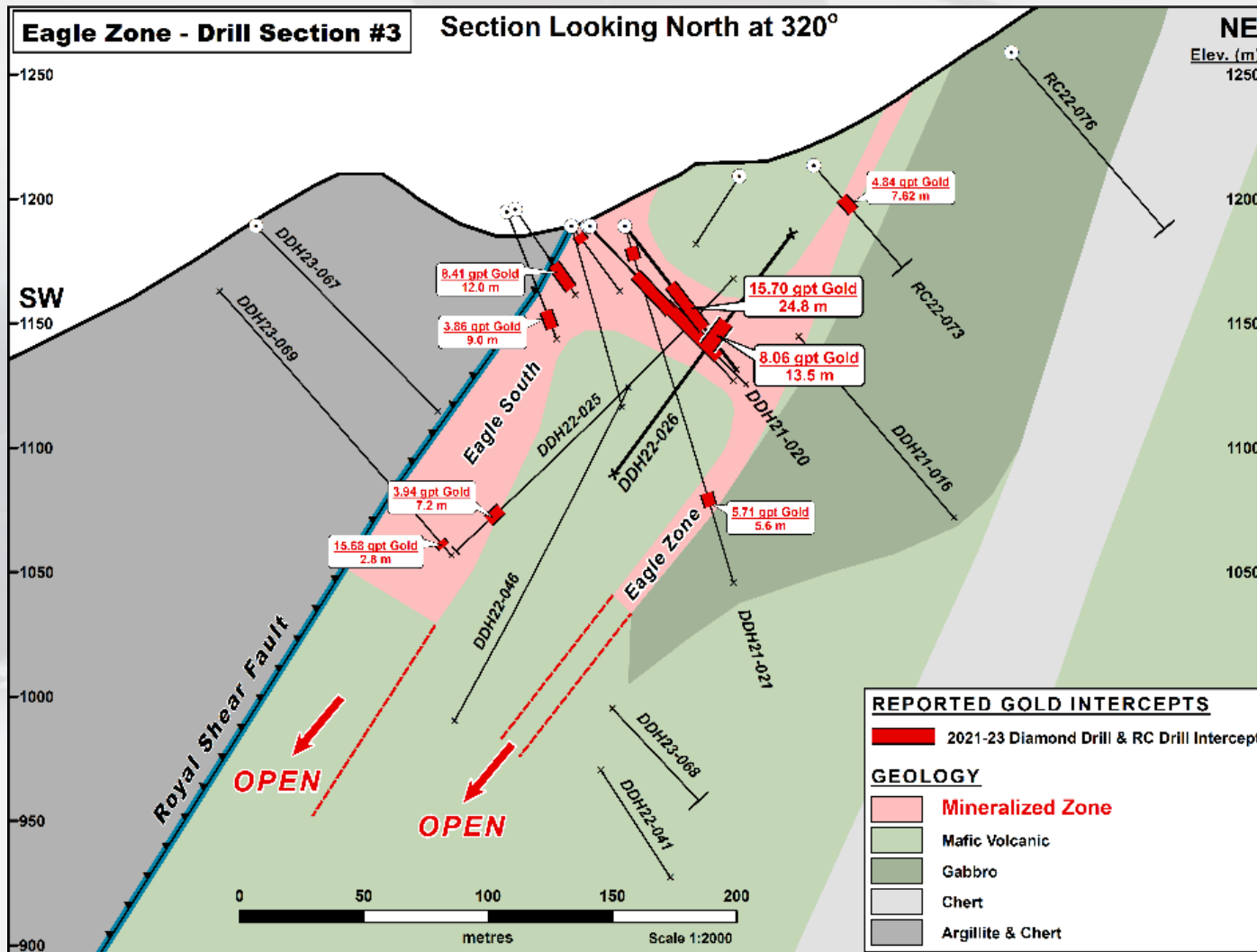
Crown Zone

2025 Drill Cross-Section



Reliance Gold Project

Eagle Cross Sections #3 – (700 M south of Imperial)



Reliance Interpretation
at Eagle Zone
(Rhys 2024)

Reliance Gold Project – Antimony Compilation

10.1 m width, 4.55 gpt Gold & 0.20% Antimony

Weighted Average of 199 DDH, RC & Channel Composites

Best Assay Composites with Antimony (2020 to 2024)

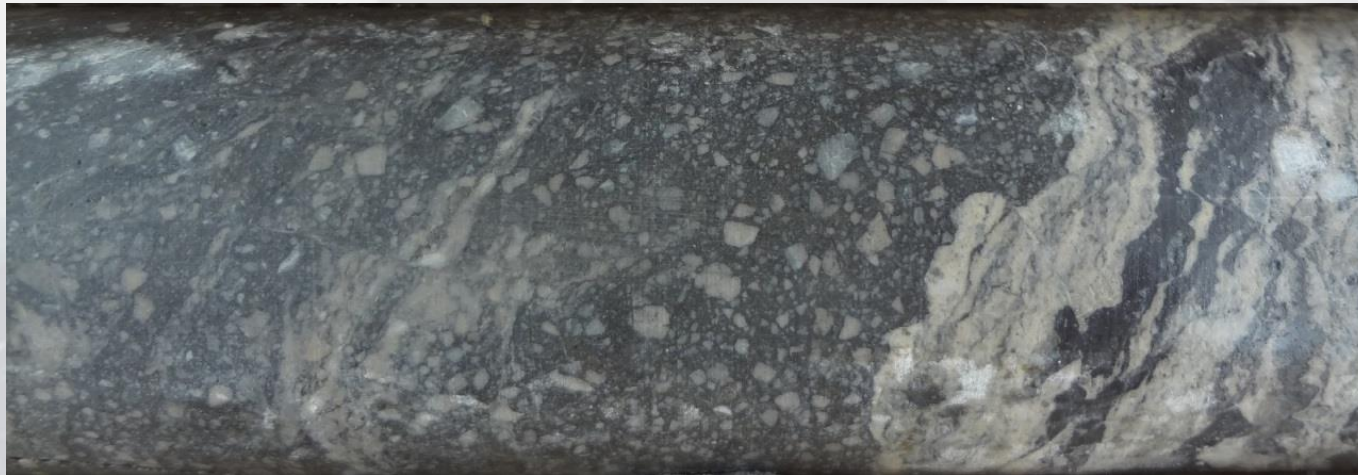
Hole / Roadcut ID	From (m)	To (m)	Length (m)	Au (gpt)	Antimony %	AuEQ (gpt)	Type
2020 Eagle1	61.3	101.8	40.5	4.98	0.54	6.14	Surface Channels
2022 EG07-01	34.0	42.0	8.0	6.35	1.49	9.57	Surface Channels
DDH21-003	0.8	17.8	17.0	4.87	0.51	5.96	DDH
DDH21-020	33.3	58.1	24.8	15.70	0.45	16.66	DDH
DDH22-036	35.4	48.1	12.7	7.65	0.48	8.69	DDH
DDH23-076	9.3	22.0	12.7	8.52	0.39	9.36	DDH
DDH24-091	370.5	371.0	0.5	2.16	19.20	43.50	DDH
DDH24-104	7.0	21.0	14.0	6.51	0.35	7.26	DDH
RC20-014	0.0	18.3	18.3	4.46	0.54	5.63	RC
RC20-015	0.0	16.8	16.8	7.39	0.46	8.37	RC
RC21-037	19.8	44.2	24.4	4.88	0.36	5.66	RC
RC22-062	44.2	82.3	38.1	5.40	0.26	5.95	RC

Composites are reported over a drill length with a 1.0 gpt gold-equivalent (“AuEQ”) cut-off.

AuEQ calculated using commodity prices of US\$2,600/oz Au and US\$18,000/tonne antimony.

Reliance Gold Project Mineralized Breccia Textures

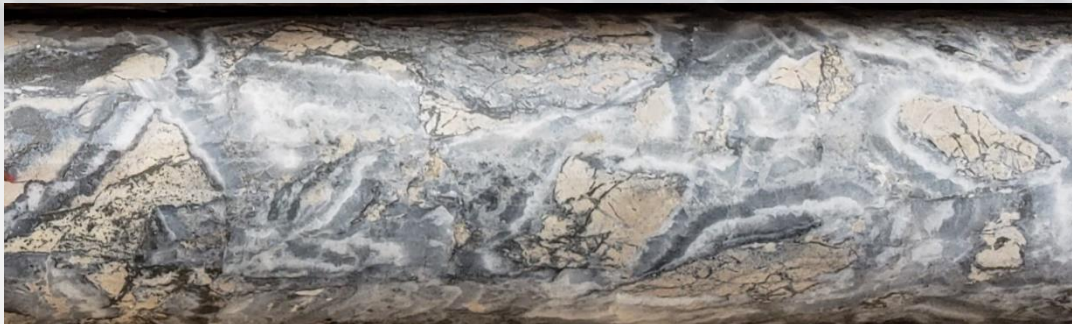
Gold - Arsenopyrite Quartz Breccia (Cataclastite) 6.19 gpt Gold over 0.85 m



**DDH22-027
@ 116.4m**

**Fine grained “crushed”
pyrite, aspy, stibnite with
fine grained quartz
breccia fragments &
late ankerite veins**

Gold - Arsenopyrite “Cockade or Coxcomb” Quartz Breccia 14.35 gpt Au /2.0 m



**DDH22-031
@ 128 m**

**late phase of “open space”
cockade quartz with
stibnite, aspy, pyrite
infilling mineralized altered
mafic volcanic fragments**

Reliance Gold Project Imperial Zone DDH25-109

From	To	Length	Sample Number	Au_USE g/t	Ag_USE ppm	Sb_USE ppm
332.5	333.6	1.1	L644809	0.001	0.03	1.7
333.6	335	1.4	L644811	0.015	0.14	25
335	336	1	L644812	0.064	0.19	11.5
336	336.6	0.6	L644813	3.3	1.16	123.5
336.6	338	1.4	L644814	0.009	0.08	14
338	339.3	1.3	L644815	0.106	0.22	49.5
339.3	340.4	1.1	L644816	5.79	2.78	216
340.4	342	1.6	L644817	8.58	6.62	873
342	343.7	1.7	L644818	12.85	12.2	528
343.7	344.5	0.8	L644819	14.1	5.17	206
344.5	345.5	1	L644821	9.7	4.6	800
345.5	346.5	1	L644822	9.64	8.01	1105
346.5	347.3	0.8	L644823	6.06	12.05	8610
347.3	348	0.7	L644824	0.905	1.76	800
348	349.8	1.8	L644825	13.95	9.34	10400
349.8	350.7	0.9	L644826	6.62	4.01	298
350.7	351.7	1	L644827	16.25	4.4	327
351.7	353	1.3	L644828	2.38	0.91	137.5
353	355	2	L644829	0.056	0.16	23.8
355	356.3	1.3	L644831	0.449	0.44	51.7
356.3	357.8	1.5	L644832	10.5	4.43	2710
357.8	359	1.2	L644833	0.023	0.64	64.4
359	359.9	0.9	L644834	0.017	0.33	13
359.9	361	1.1	L644835	0.005	0.33	9.86
379	380	1	L644836	0.005	0.02	7.74
380	381	1	L644837	7.89	0.41	241
381	382	1	L644838	0.027	0.02	20.3

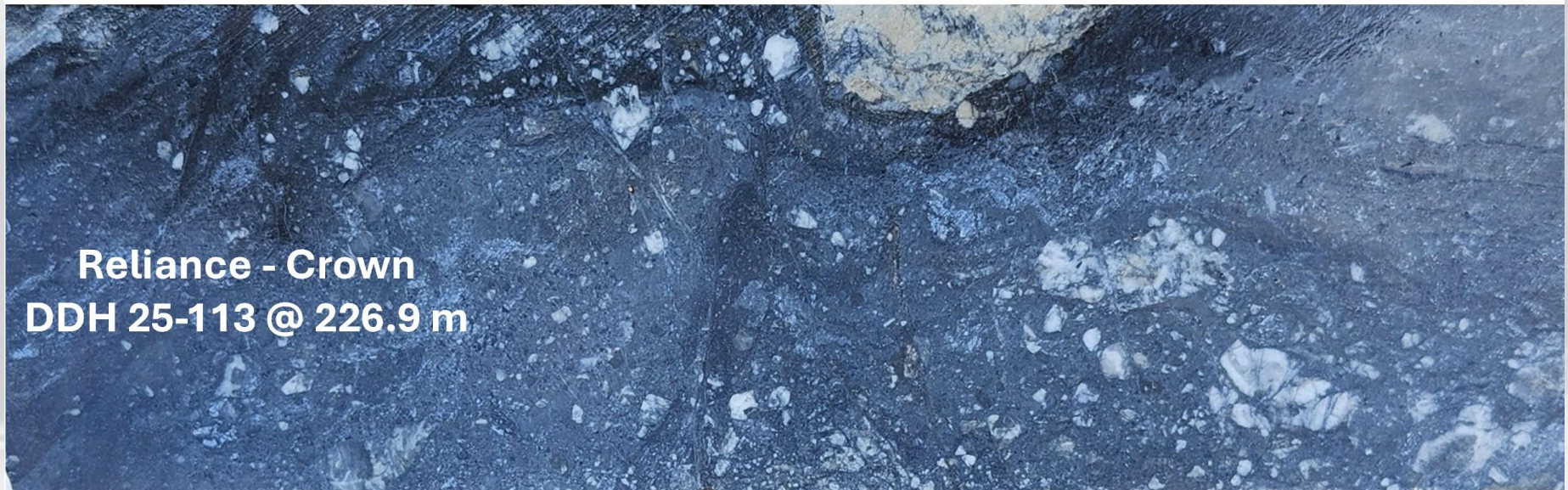
**6.74 gpt Au
& 0.16% Sb
over 21.8 m**

**Includes
10.11 gpt Au
& 0.25% Sb
over 12.4 m**

Reliance Gold Project

Crown Zone DDH25-113

Stibnite Rich Cataclastite Breccia – 5.63 gpt Gold, 5.12% Antimony / 3.3 m



Reliance - Crown
DDH 25-113 @ 226.9 m

Reliance Gold Project

Upper Crown Discovery in DDH24-093

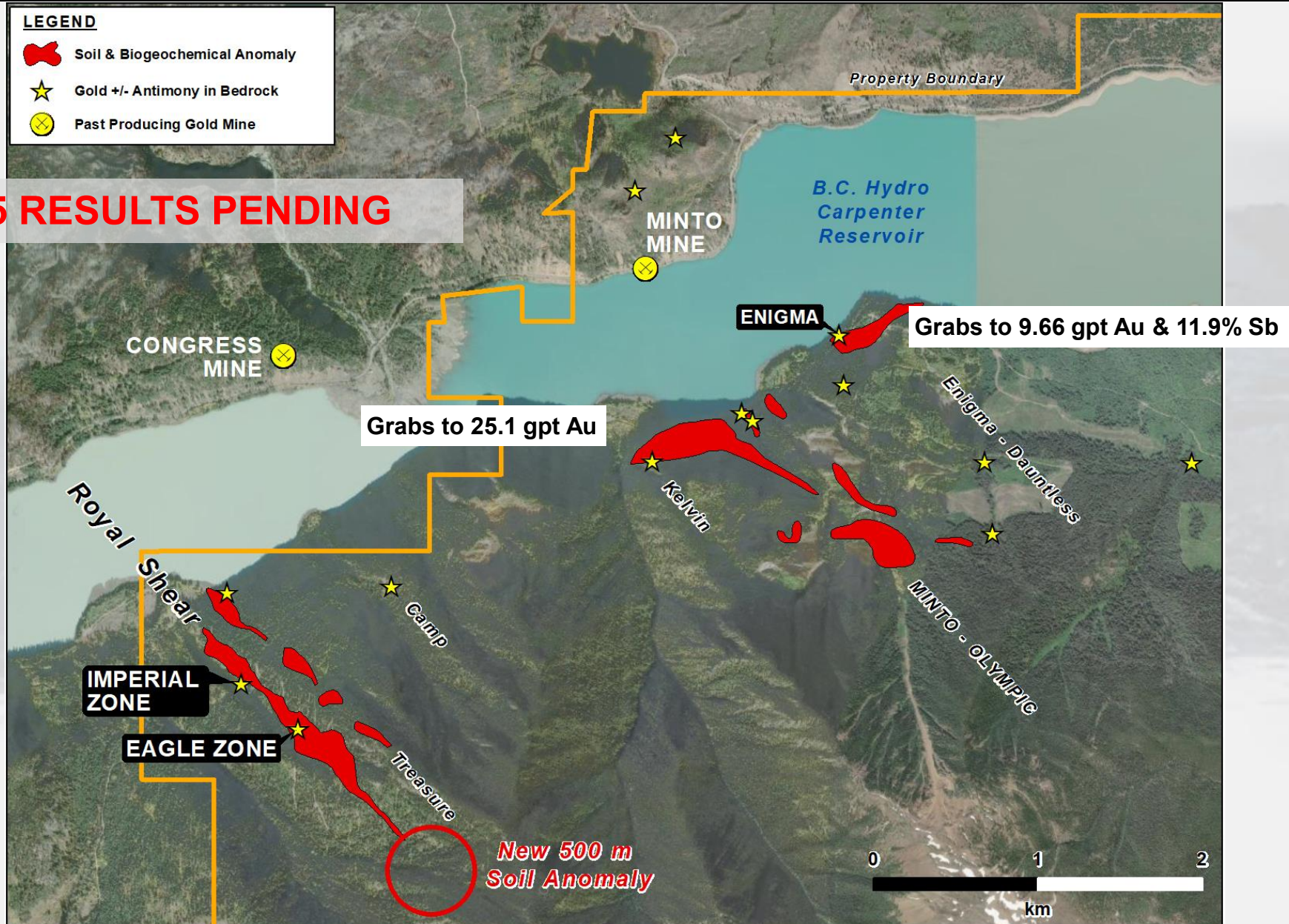
NQ Core **Visible gold** in Quartz Vein – **147.5 gpt gold / 1.0 m**



Reliance Gold Project, B.C.

Eagle, Imperial & the Olympic Geochemical Anomalies

2025 RESULTS PENDING



Reliance Gold Project, BC Conclusions

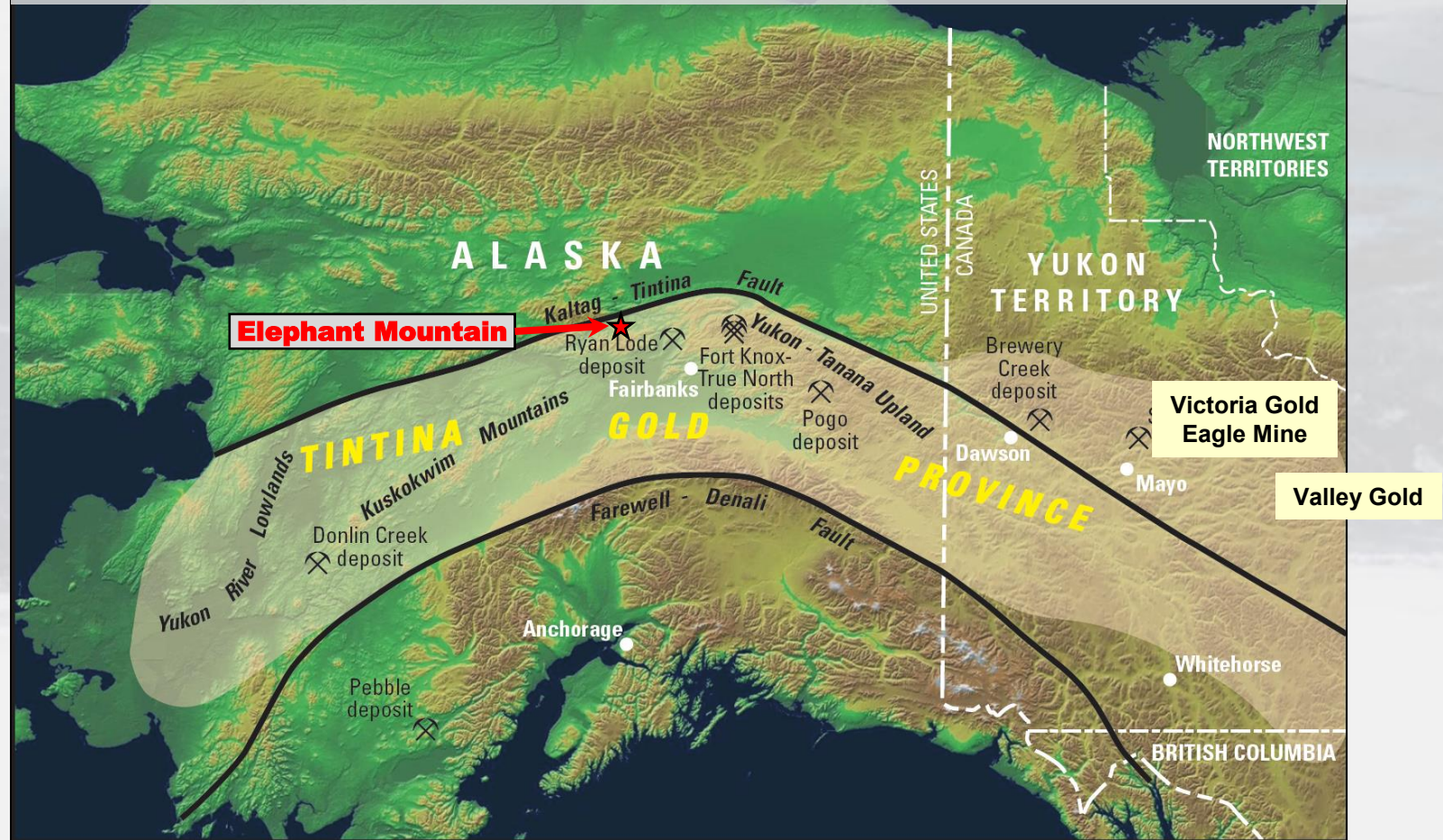
- An outstanding New Exploration Discovery in an historically productive multi-million ounce Orogenic Gold Camp.
- Wide pervasive iron-carbonate sericite alteration, sulphidization, breccia, and antimony indicate an “Epizonal” Orogenic setting in a “brittle” structural regime – Epizonal comparables to Fosterville, Australia and Newfoundland discoveries.
- Model provides potential for a major gold system with depth continuity.
- Drilling has delivered a high percentage of significant and excellent gold intersections with associated antimony.
- Deposit extends **1.5 km laterally X 1.1 km vertically**. Eagle, Crown & Imperial confirmed as continuous structural regime
- Inaugural Mineral Resource & Metallurgy Expected Soon – Major Milestone
- Parallel & on-Strike structural trends developing as high priority drill targets

ALASKA GOLD PROJECT



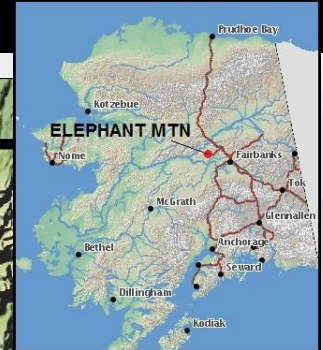
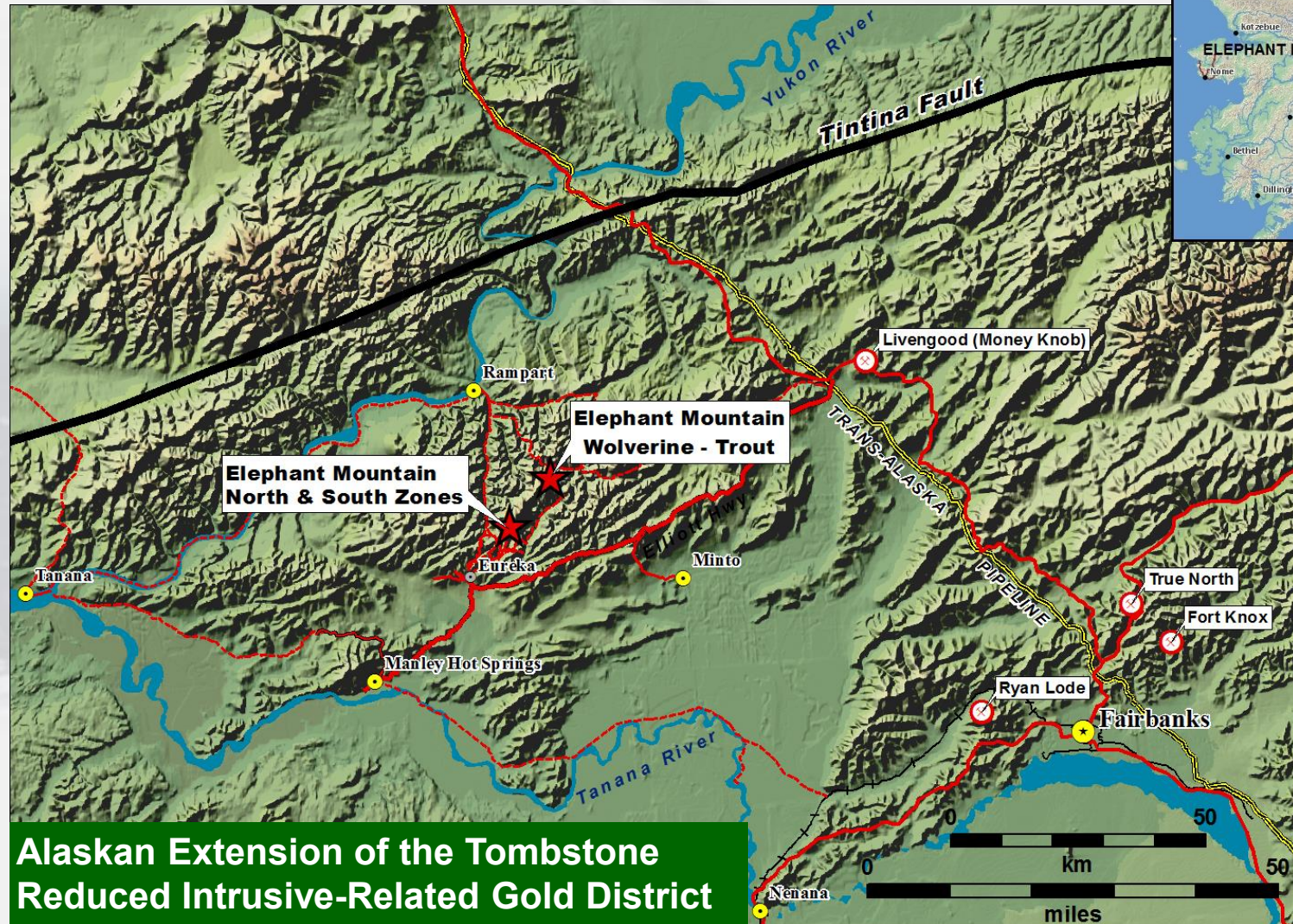
Tombstone (Tintina) Gold Province - Alaska & Yukon

Alaska ranks High in Fraser Institute's Investment Attractive Index

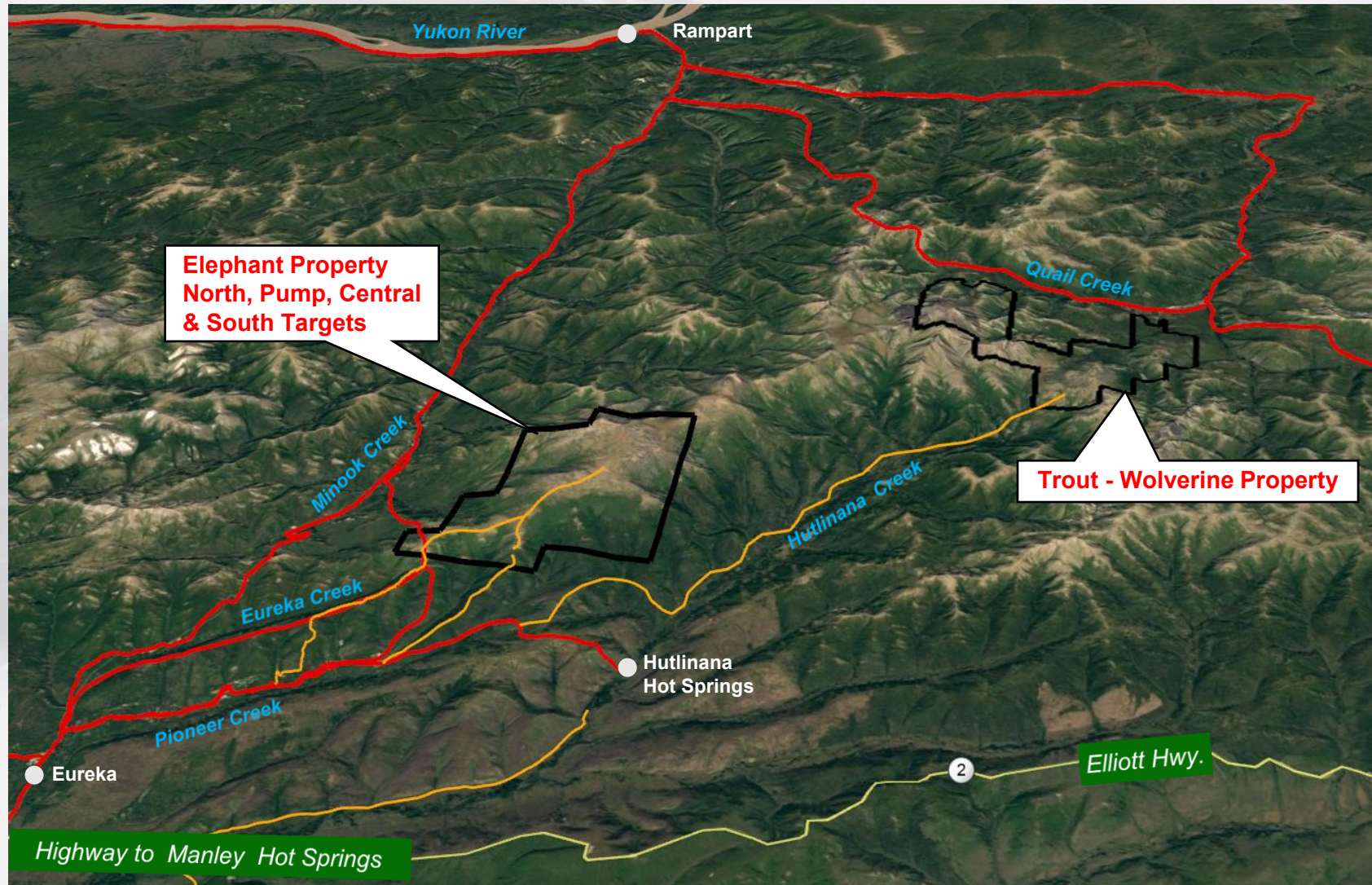


Map source: USGS Fact Sheet 2007-3061

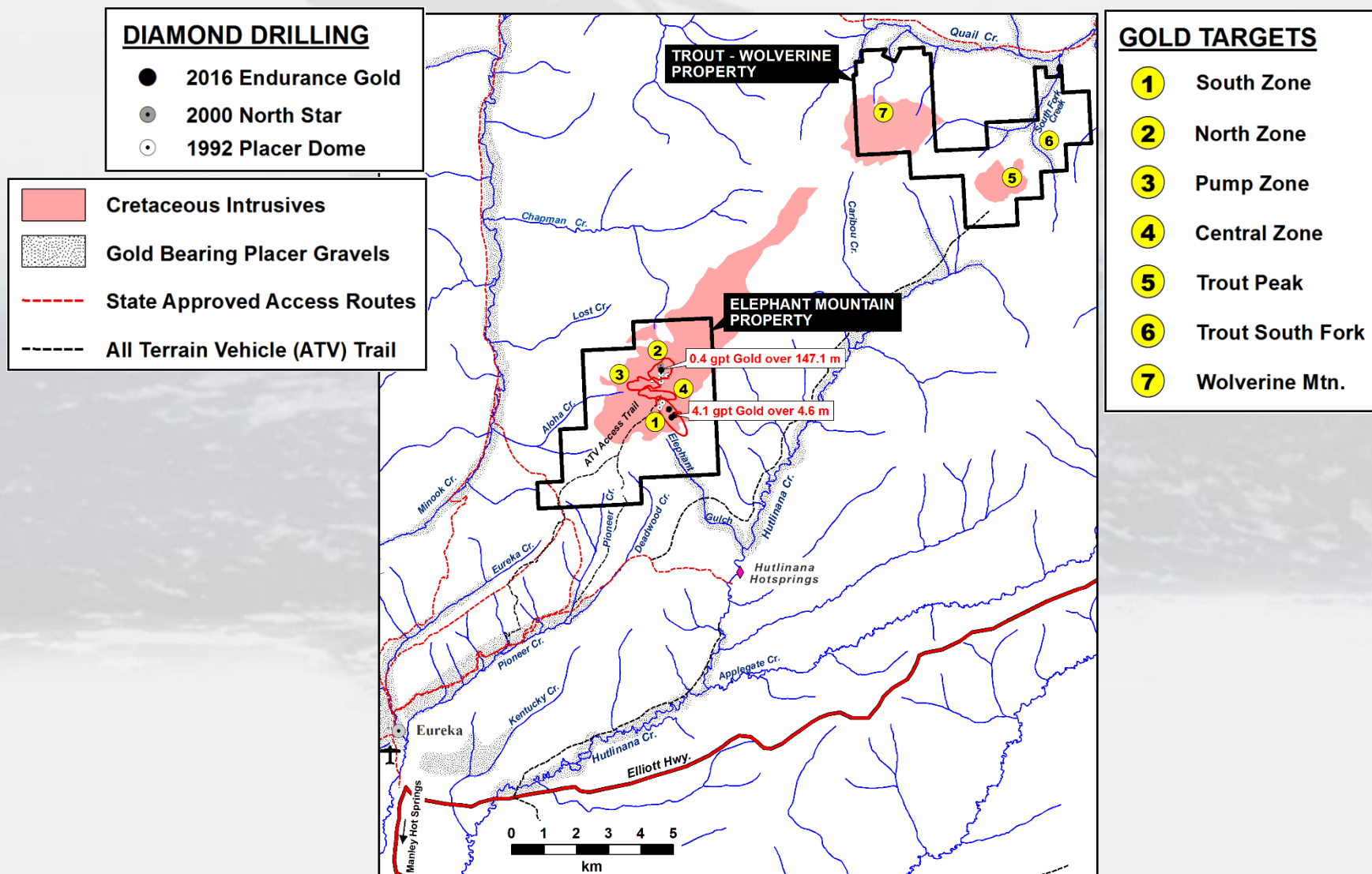
Alaska Properties – Road Accessible



Elephant Mountain Gold Project



Elephant Mountain Gold Project

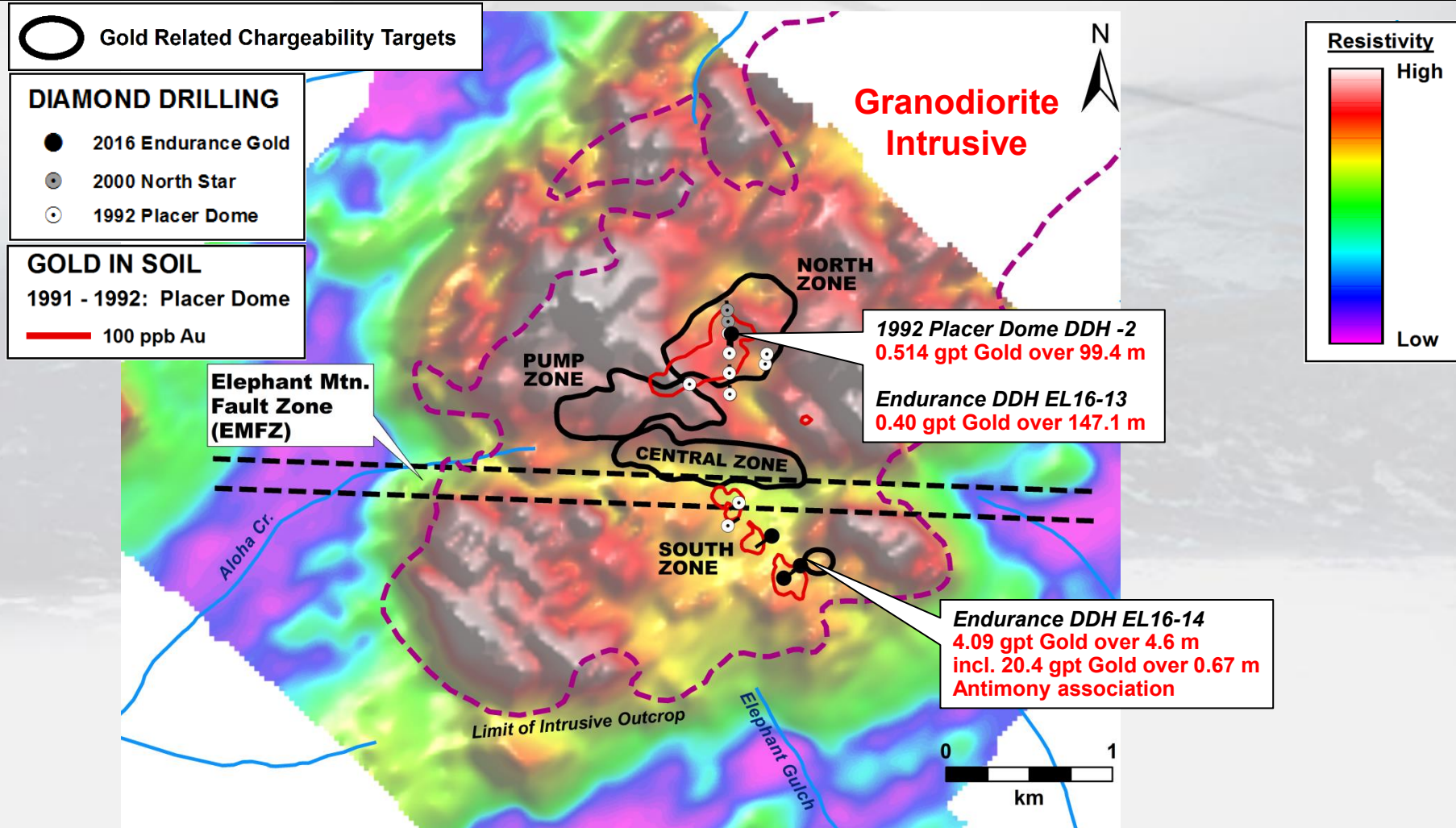


Elephant Mountain Gold Project, Alaska

- Own 100% of Elephant and Trout-Wolverine Claims - subject to 1% NSR after buyout
- Road and State trail accessible in Central Alaska. – Drilling Permits Achievable
- State Mining Claims – Central Alaska
- Target Similarity to Fort Knox AK, Golden Summit AK, Snowline, Eagle (Yukon)
- **Six** intrusive hosted gold target areas within a 12 x 5 km district **All zones are open to expansion through geochemical exploration**
- Drilling to date indicates a large 2 x 2 km gold mineralizing system straddling a wide intrusive-hosted fault zone with **4 targets**, 2 targets with wide low-grade gold and narrower high grade gold
- **South Zone Gold Discovery** - step-out drilling a high priority – Antimony assoc
- **North Zone, Pump Zone & Central Zone** chargeability targets warrant grid-drilling to discover higher grade feeder structures.
- **Trout Peak Target** a high priority for drilling
- **Trout South Fork** target warrants drilling

Elephant Mountain Gold Project

Airborne Geophysics – 7200 Hz. Resistivity



Elephant Mountain Gold Project Intrusive Hosted - Induced Polarization Anomalies

SW

Looking West Northwest

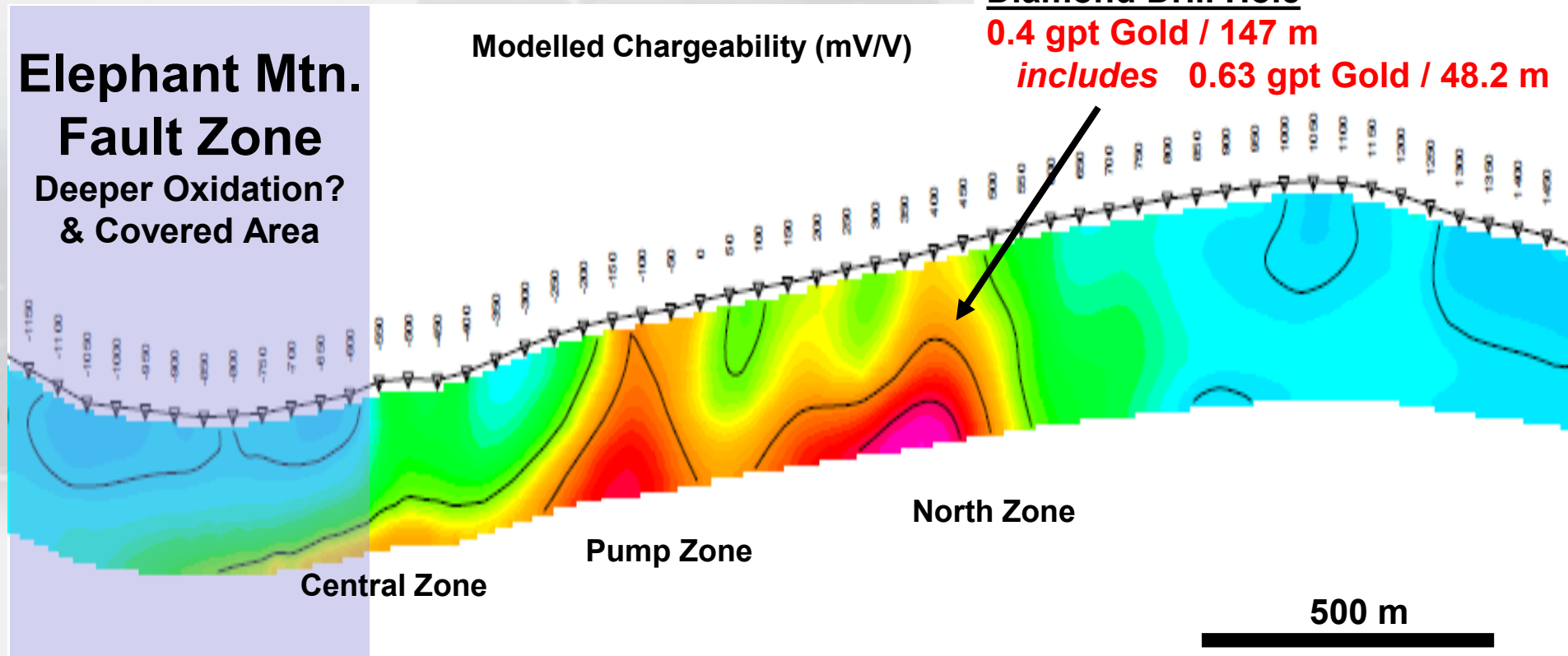
NE

Diamond Drill Hole

0.4 gpt Gold / 147 m

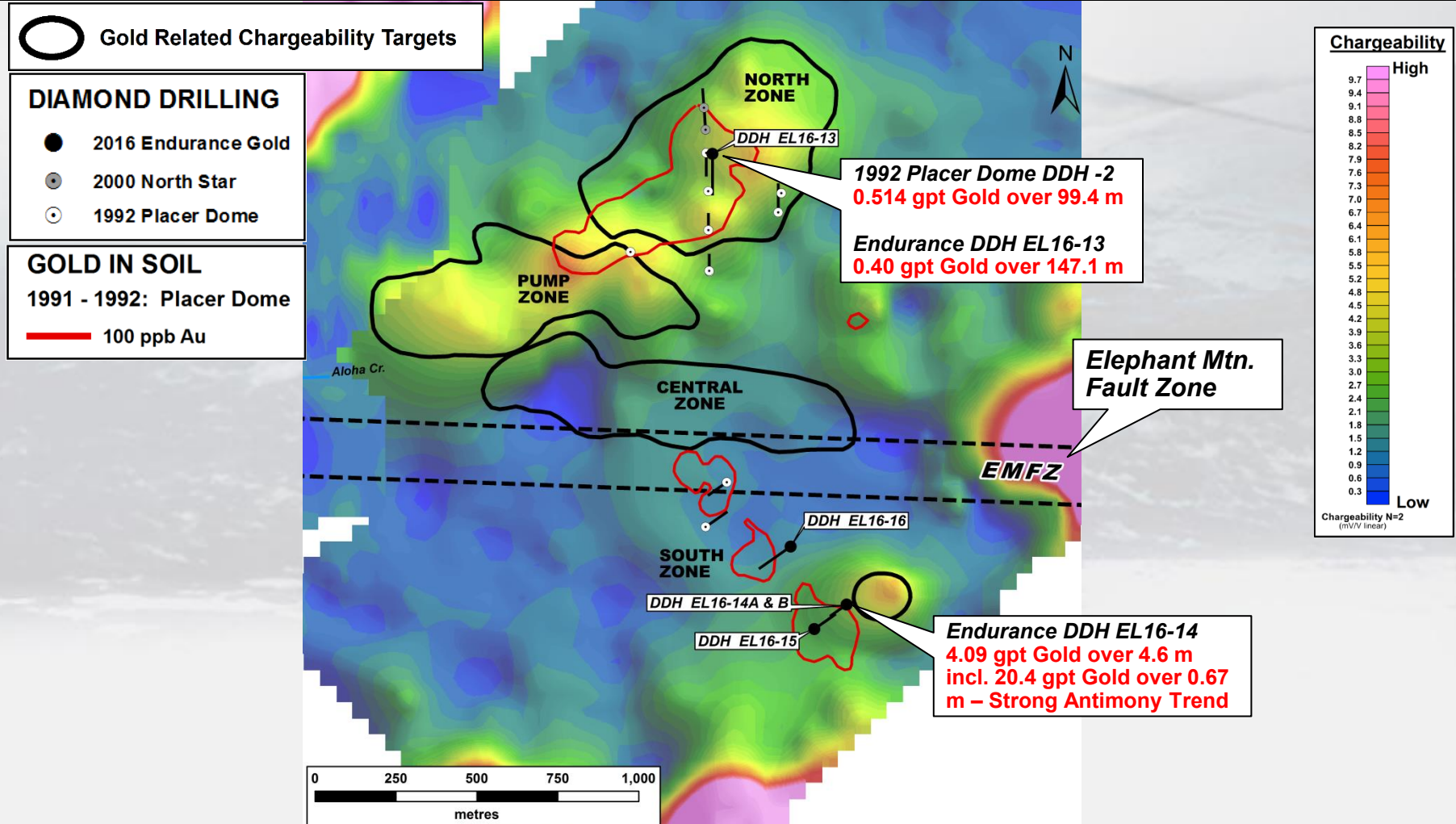
includes 0.63 gpt Gold / 48.2 m

Modelled Chargeability (mV/V)

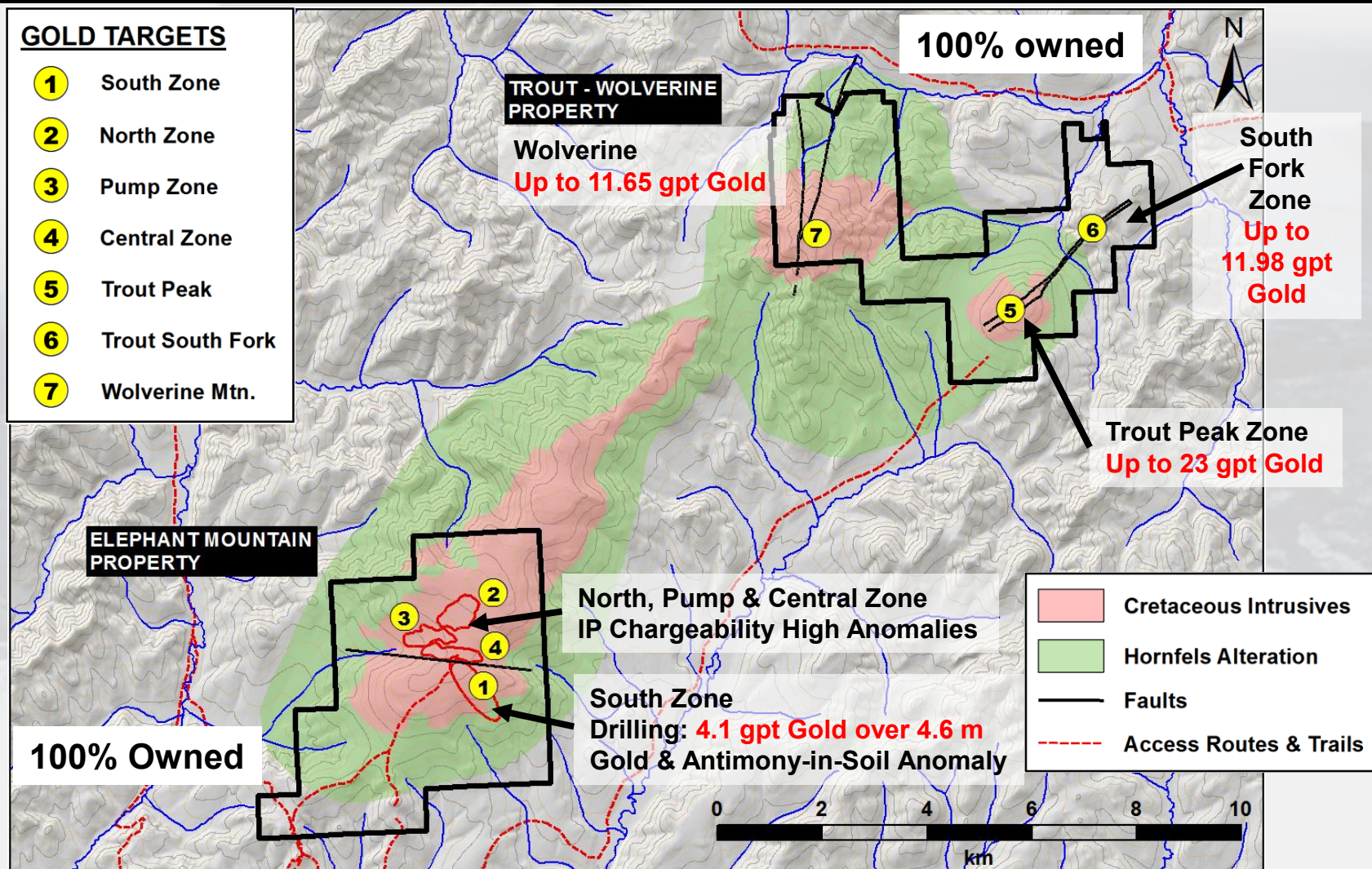


Elephant Mountain Gold Project

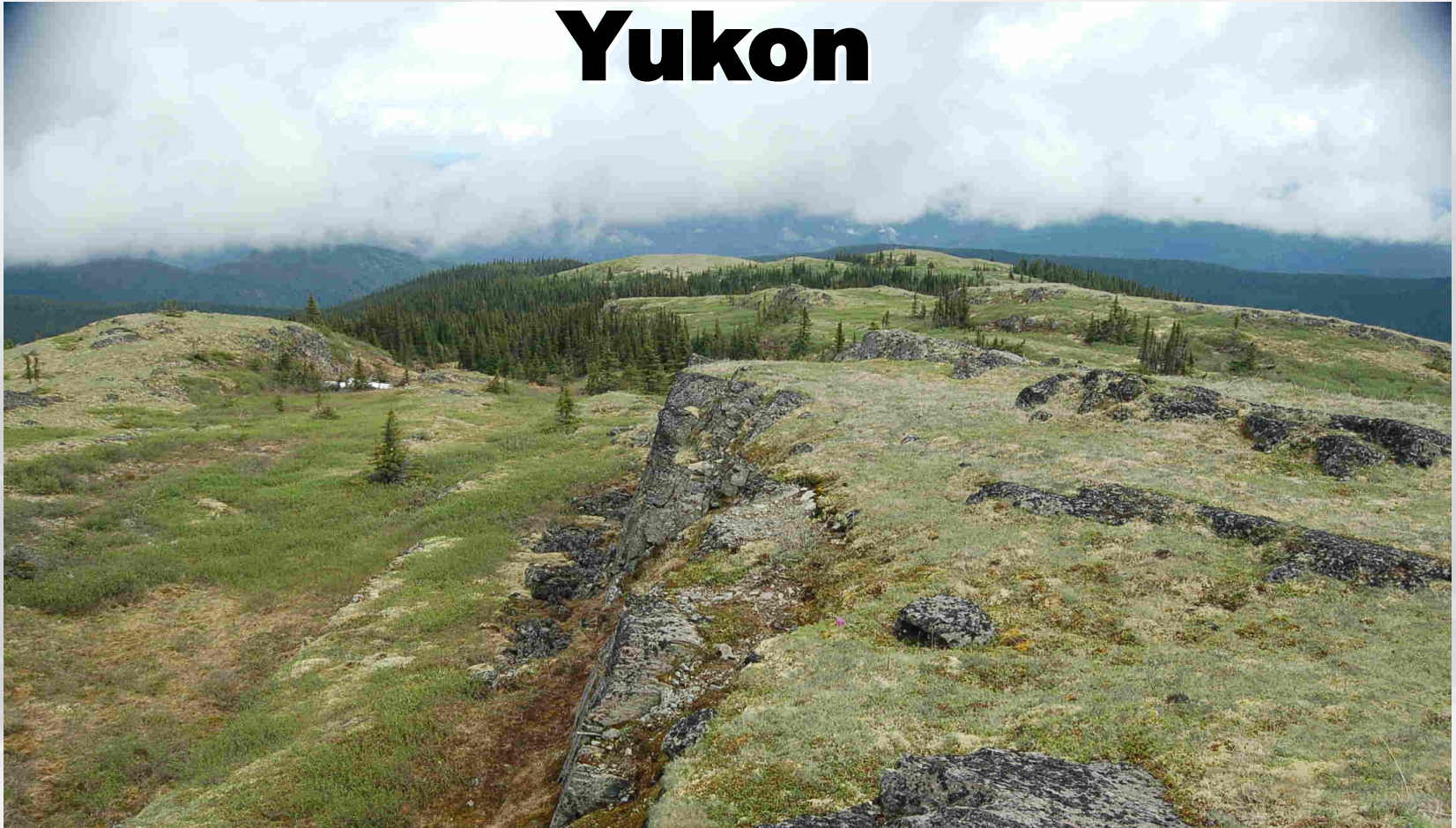
Chargeability (50m dipole) – N2



Elephant Mountain Gold Project – Area Geology



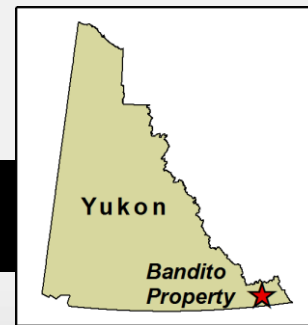
BANDITO REE-Nb PROJECT Yukon



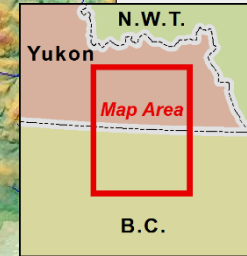
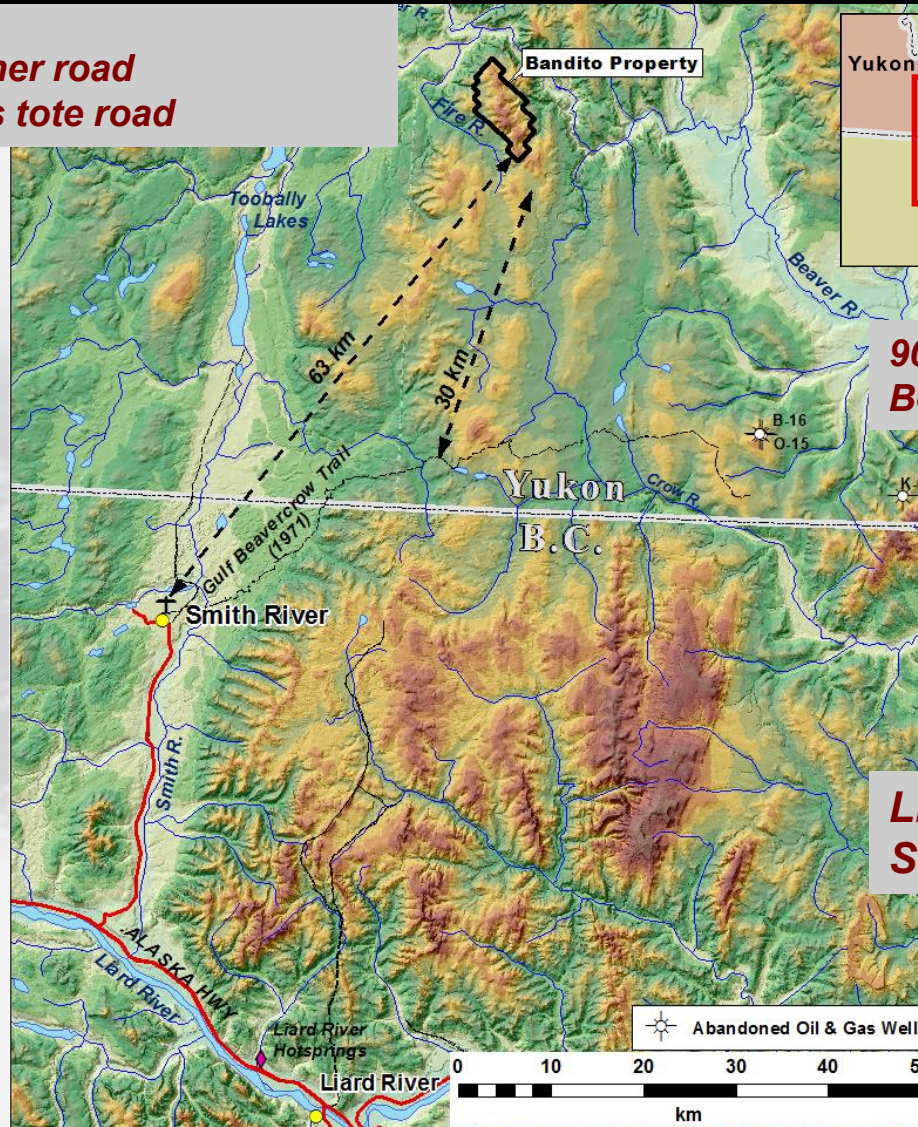
**100% Endurance Owned
Rare Earth-Niobium-(Nickel-Copper) Target**

Bandito Project, Yukon

Location Map



63 km from all weather road
30 km from oil & gas tote road



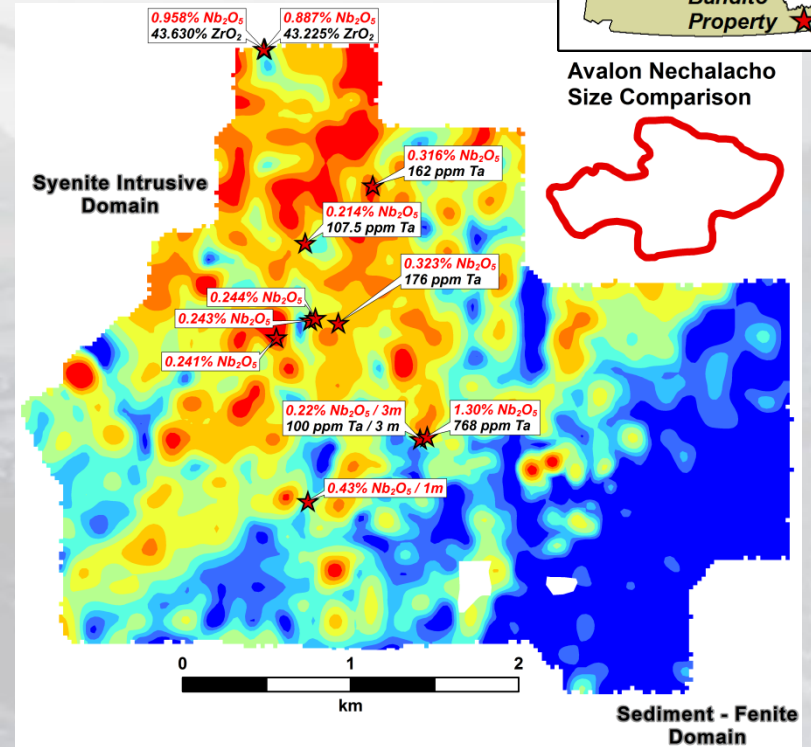
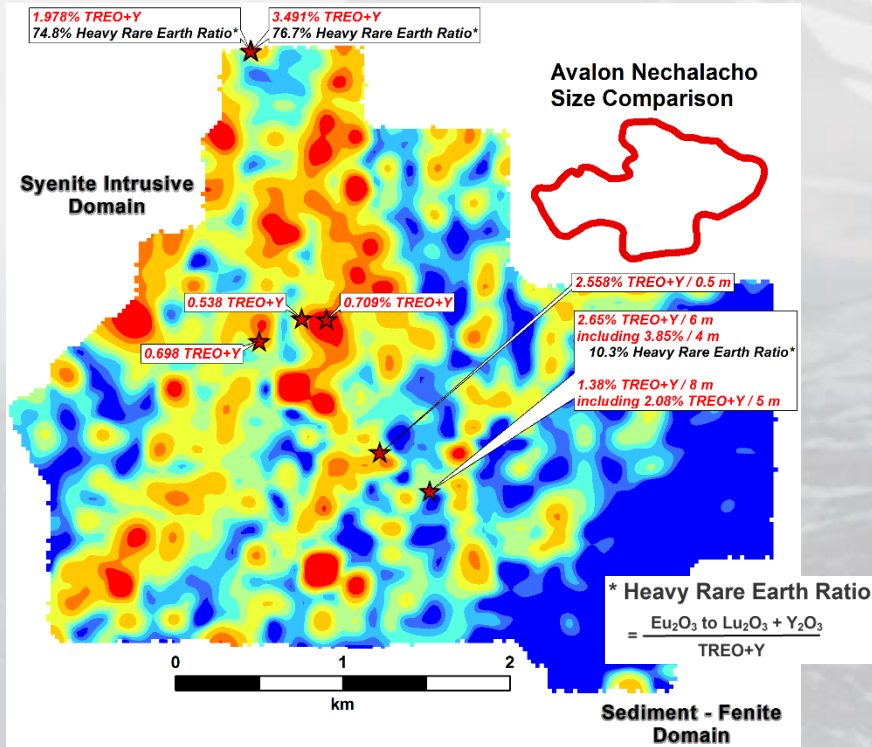
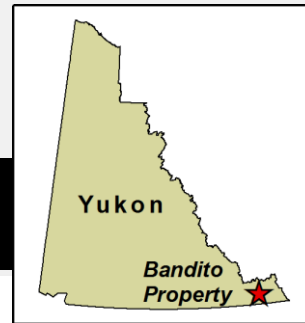
**90 kilometres to
Beaver River gas wells**

**Liard River
Shale Gas Basin**



Bandito Project, Yukon

Highlights REE & Niobium in Soil



2011 Soil Grid

Total REE & Yttrium

TREE+Y (ppm)	Percentile
600 - 3,534	> 95th
496 - 600	> 90th
389 - 496	> 80th
322 - 389	> 70th
280 - 322	> 60th
256 - 280	> 50th
233 - 256	> 40th
218 - 233	> 30th
40 - 218	< 30th

★ 2011 and 2012 Grab or Chip Sampling
(% TREO+Y / metres)

**Large Rare Earth
and Niobium
Soil Anomalies related to
High REE-Nb bedrock values
in Syenite**

Soil Grid Sample Density
2011 Grid = 100 m x 100 m

**Niobium - Tantalum
Statistical Correlation is 86.5%**

Niobium in Soil

Nb (ppm)	Percentile
196 - 575	> 95th
146 - 196	> 90th
96 - 146	> 80th
68 - 96	> 70th
50 - 68	> 60th
40 - 50	> 50th
34 - 40	> 40th
29 - 34	> 30th
5 - 29	< 30th

★ 2011 and 2012 Grab or Chip Sampling
(% Nb₂O₅ / metres)

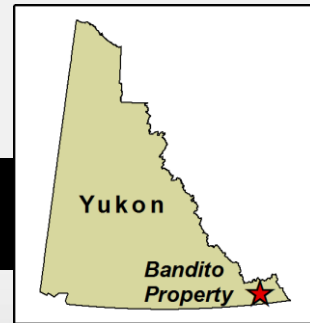
Tantalum in Soil

Ta (ppm)	Percentile
9.4 - 54	> 95th
6.9 - 9.4	> 90th
4.7 - 6.9	> 80th
3.4 - 4.7	> 70th
2.7 - 3.4	> 60th
2.3 - 2.7	> 50th
2.1 - 2.3	> 40th
1.8 - 2.1	> 30th
0.1 - 1.8	< 30th

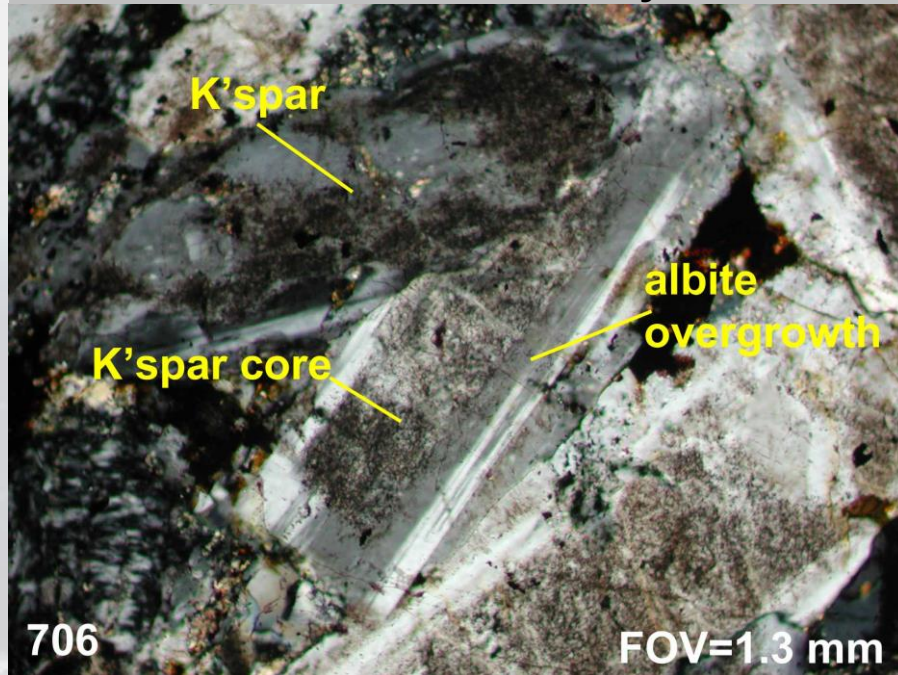
Soil Grid Sample Density
2006 Grid = 50 m x 25 m
2011 Grid = 100 m x 100 m

Bandito Project, Yukon

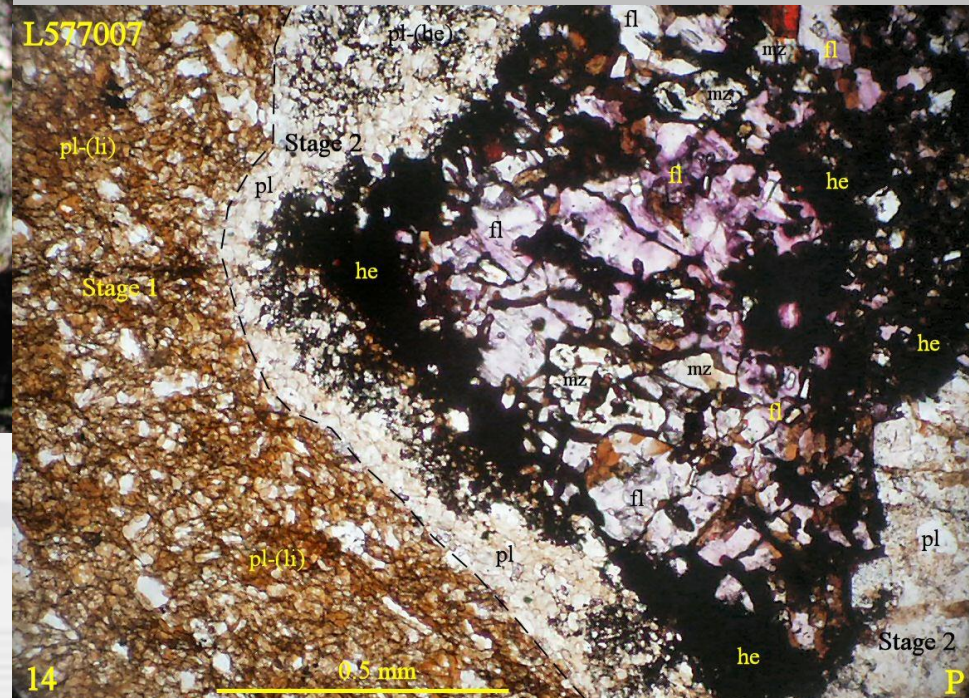
Sodium and Potassium Metasomatism



Albite – potassium feldspar Fenite
or fenitized intrusive dykes



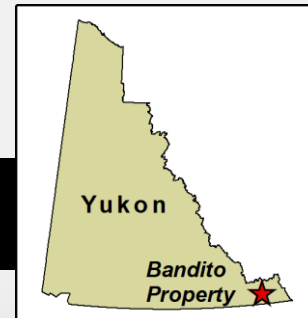
Multistage fluorite hematite monazite
plagioclase Fenite



Grabs up to 6.8% TREO

Bandito Project, Yukon

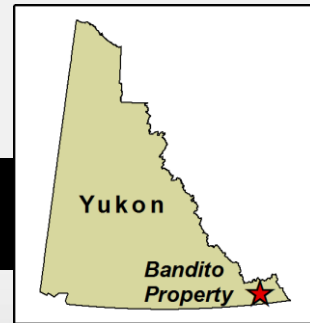
Project Highlights



1. **Drill Ready REE target** - 3.0 by 0.5 Km Rare Earth System in Fenite – 2.3% TREO+Y over 6 m with 10.8% Heavy Rare Earths in Fenite - plus consistently high niobium values in Fenite.
2. **Drill Ready Nb-Ta targets** - Over 30 chip & grab samples contain in excess 0.143% Nb_2O_5 with values up to 1.3% Nb_2O_5 and 0.094% Ta_2O_5 in syenite.
3. Up to 1.8 km by 600 m TREE+Y and Niobium-Tantalum soil anomalies in +4 square km altered “Red Syenite” together with values up to 3.49% TREO+Y with 76% Heavy Rare Earth and 0.96% Nb_2O_5 indicate discovery potential for volumetrically large Syenite-Intrusive hosted REE-niobium-tantalum deposits.
Drill Ready after intensive prospecting and trenching.
4. The alteration and “pregnant” rare metals system remains open to expansion within the current property.
5. The Copper-Nickel “Discovery” soil anomaly is 1000 by 600 m, much larger than the area of known mineralization (580 by 200 metres). **Drilling warranted.**

Bandito Project, Yukon

Next Steps



1. LiDAR Complete – Interpretation required to assist with defining lithological and intrusive contacts
2. Airborne + Ground Geophysics – To define system size with radiometrics.
3. Additional soil & rock sampling – To define limits of the large intrusive-hosted rare earth, niobium, and tantalum system.
4. Yukon Class 1 Permit previously approved - requires renewal - this permit allows some recon drilling
5. Class 3 Drill and Trench permit application under consideration.
6. Drilling – Several rare earth, niobium/tantalum and nickel-copper targets warrant drill testing.
7. Trenching – To identify controls and extent of rare earth and niobium-tantalum mineralization in intrusive-hosted and fenite targets.



www.endurancegold.com

Robert T. Boyd, P.Geo. is a qualified person as defined in National Instrument 43-101 and supervised the compilation of the information forming the basis for this summary.

Suite 1212 – 666 Burrard Street
Vancouver, BC V6C 2X9 Canada
Toll Free Phone: 877-624-2237

EDG: TSX.V | ENDGF: OTCQB | Frankfurt: 3EG