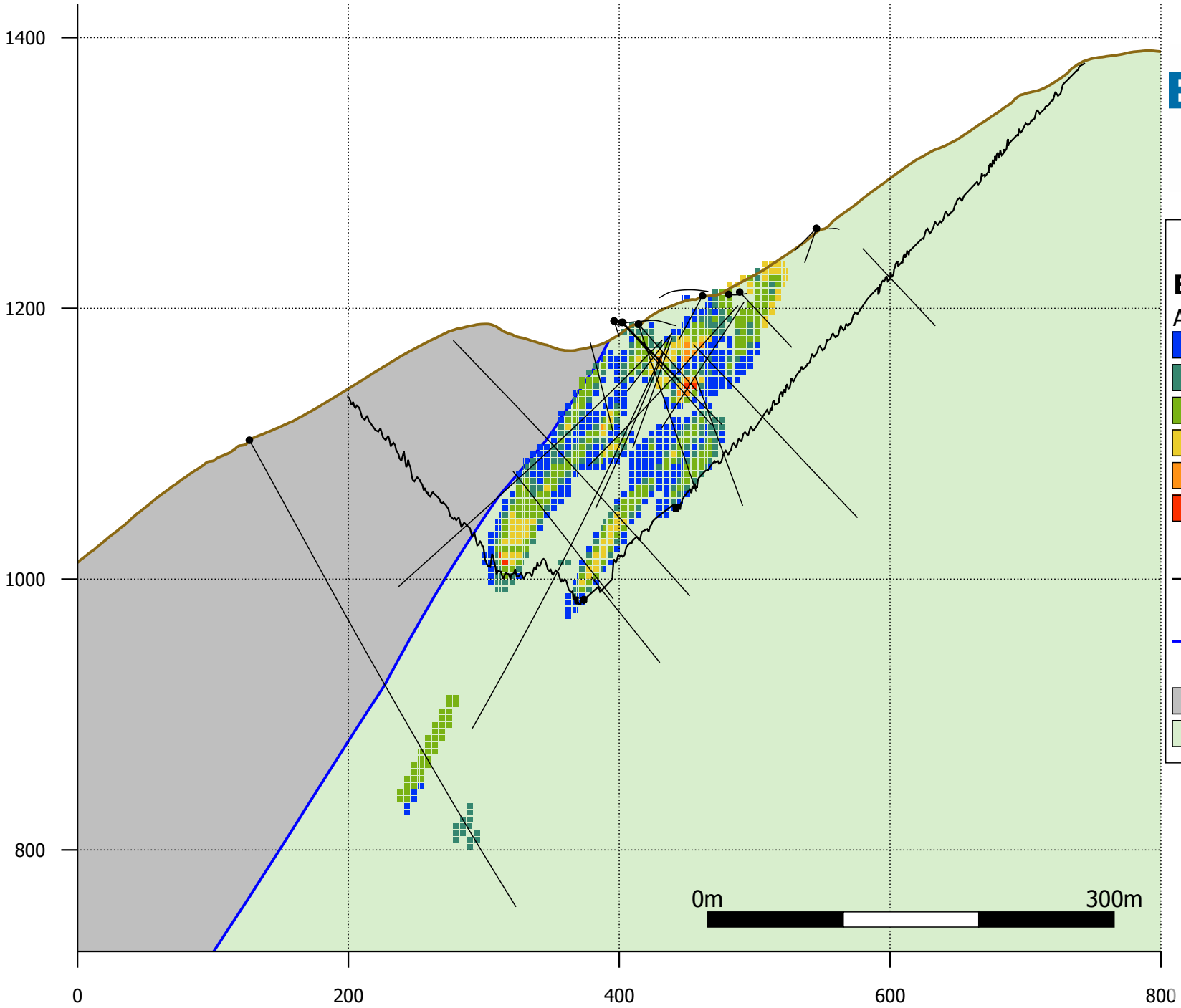


SW

# Eagle Zone

NE

## ENDURANCE GOLD



**Inferred MRE**

**Block Model**

Au (gpt)

- ≤ 0.8
- ≤ 1.7
- ≤ 2.7
- ≤ 4.1
- ≤ 6.3
- > 6.3

— Pit Shell (\$2500 Au)

— Royal Shear Contact

■ Hangingwall Argillite

■ Footwall Mafic Volcanics

Vertical Section  
Looking NW (330 Deg)  
50 m Thickness

Effective Date:  
January 8, 2026