



**Reliance Gold Project
Gold Bridge, BC**

KEG Conference

Darren O'Brien – VP Exploration

April 14, 2026

Corporate Disclosure

The company is an exploration stage mineral resource exploration company and none of its mineral projects have yet to be proven to be economic. The contents of this presentation is for information purposes only and does not constitute an offer to sell or a solicitation to purchase any securities referred to herein.

This presentation contains “forward-looking information” within the meaning of applicable Canadian securities regulations. All statements other than statements of historical fact herein, including, without limitation, statements regarding the company’s plans, goals or objectives and future exploration, development, potential mineralization, exploration results and future plans are forward-looking statements that involve various risks and uncertainties. There can be no assurance that such statements will prove to be accurate, and actual results and future events could differ materially from those anticipated in such statements. Readers are advised not to place an undue reliance on forward-looking statements.

The Mineral Resource Estimate (“MRE”) in this presentation was prepared for Endurance Gold Corp. by Ginto Consulting Ltd. in accordance with NI 43-101 – Standards of Disclosure for Mineral Projects. Please see the news release dated January 19, 2026 for additional disclosure for the MRE with an effective date of January 8, 2026.

Mineral Resources, which are not Mineral Reserves, do not have demonstrated economic viability. There is no certainty that all or any part of the mineral resources estimated will be converted into mineral reserves. The estimate of Mineral Resources may be materially affected by environmental, permitting, legal, title, taxation, sociopolitical, marketing, changes in global gold markets or other relevant issues.

The CIM definitions were followed for the classification of the mineral resources. The inferred mineral resources have a lower level of confidence and must not be converted to mineral reserves. It is reasonably expected that the majority of inferred mineral resources could be upgraded to indicated mineral resources with continued exploration. The technical and scientific information in this presentation has been reviewed and approved by Darren O’Brien, P.Ge. who is a Qualified Person as defined by National Instrument 43-101 Standards of Disclosure for Mineral Projects.

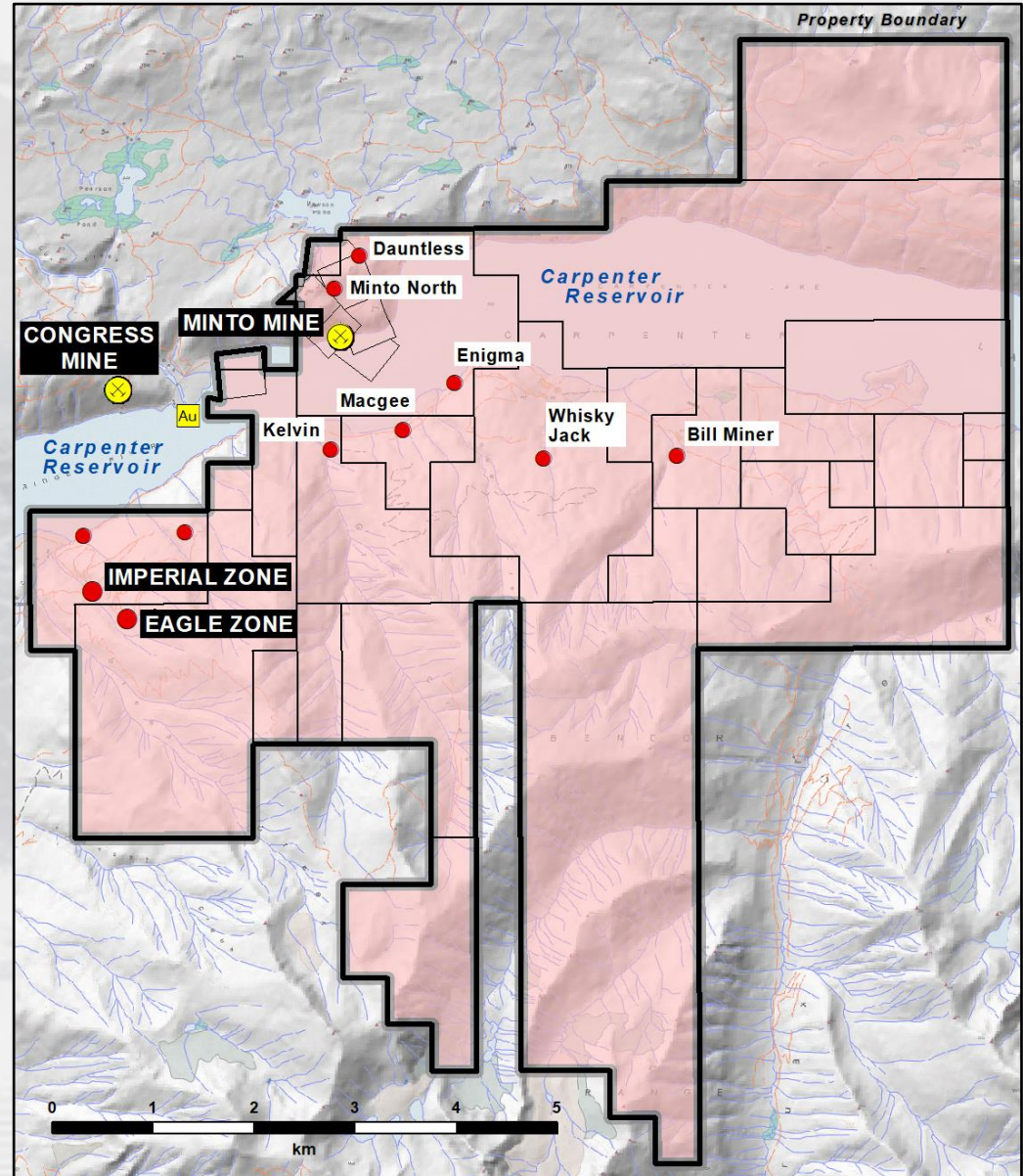
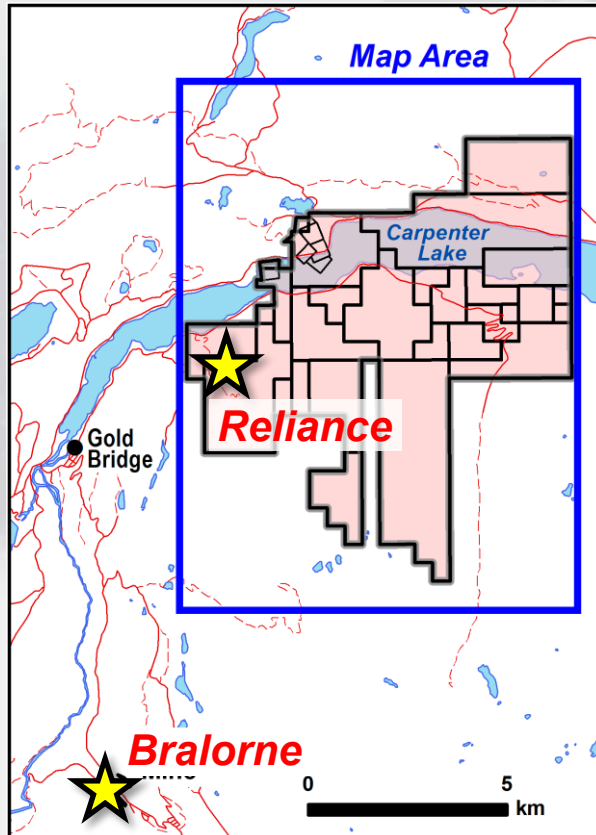
Endurance Gold – Active Projects



Bridge River Camp

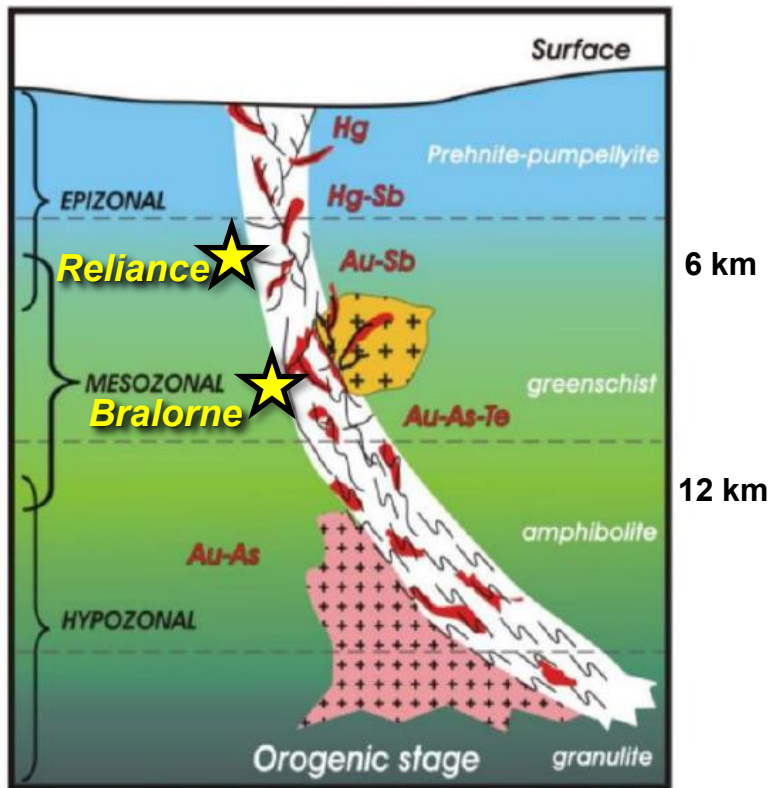
- 100 km West of Lillooet
- +4 Moz Au production

District Consolidation of Gold & Antimony Prospects



Bridge River Mining Camp = Orogenic Gold Camp

Compressional / transpressional environment



pp
g
a
gran
Metamorphic grade
of host rocks

Ore bodies

++
++
Granitoid

+++
+++
Gneissic rocks

Shear zone

brittle structure

ductile structure

(Idrus et al., 2017)

- Compressional and transpressional deformation zones
 - Coast Plutonic emplacement
 - Regional faults change from sinistral to dextral strike-slip movement (64 Ma)
- Bralorne-Pioneer Mines
 - **Mesozonal Orogenic** vein deposits
 - >4 Moz Au historic production
- Reliance Gold Deposit
 - **Epizonal Orogenic** deposit
 - Transitional textural change from mesozonal with brittle-ductile deformation
 - **Cataclastic breccias** with arsenopyrite infill matrix
 - **Coxcomb and cockade quartz-carbonate breccia veins**
 - **Gold-Antimony (stibnite) association**

Historic antimony prospect with small scale mining going back to 1915

1985 to 2008 Early Gold Exploration

- 1986 drill discovery of the Imperial Zone
- Property never systematically explored
- Claims lapsed in 2018

2020 to 2025 Endurance Gold

- Geological mapping and prospecting
- **1,552 Biogeochem** samples (Douglas Fir twigs)
- **4,400 Soil** Samples (talus-fines & weak-leach till)
- **864 Channel** samples / 1,513 metres
- **Geophysics:** 3DIP / airborne magnetics / LiDAR
- **84 RC** holes / 6,046 metres
- **127 DDH** holes / 32,075 metres core

Reliance Gold Project Highlights

Near-surface, high-grade gold discovery

- 32 km of drilling with Excellent hit statistics (*70% hit ratio*)

Inaugural Mineral Resource Estimate (January 2026)

- **Inferred 19.6 Mt at 2.3 gpt Au for 1.45 Moz Au**
- *Discovery Cost of C\$9 per ounce Inferred*

Exploration Upside

- MRE open to expansion at depth and in-pit
- > 2 km of untested surface geochem along strike of MRE
- Numerous surface geochem targets within 5 km of MRE
 - Advanced to drill-ready stage

Positive Metallurgy

- 84.7% Au recovery to a Marketable Concentrate

Reliance Gold Project (Looking South)



Reliance Gold Project Royal Shear Surface Geology



REPORTED GOLD INTERCEPTS

5.00 gpt Gold / 9.8 m

2023 Diamond Drill Intercept

DRILLING BY ENDURANCE GOLD

- Diamond Drill Hole
 - Reverse Circulation (RC) Drill Hole
- Select drill traces shown Au = Gold

MINERALIZATION

- Surface Exposed Mineralization
- Mineralization Trend Projected from depth

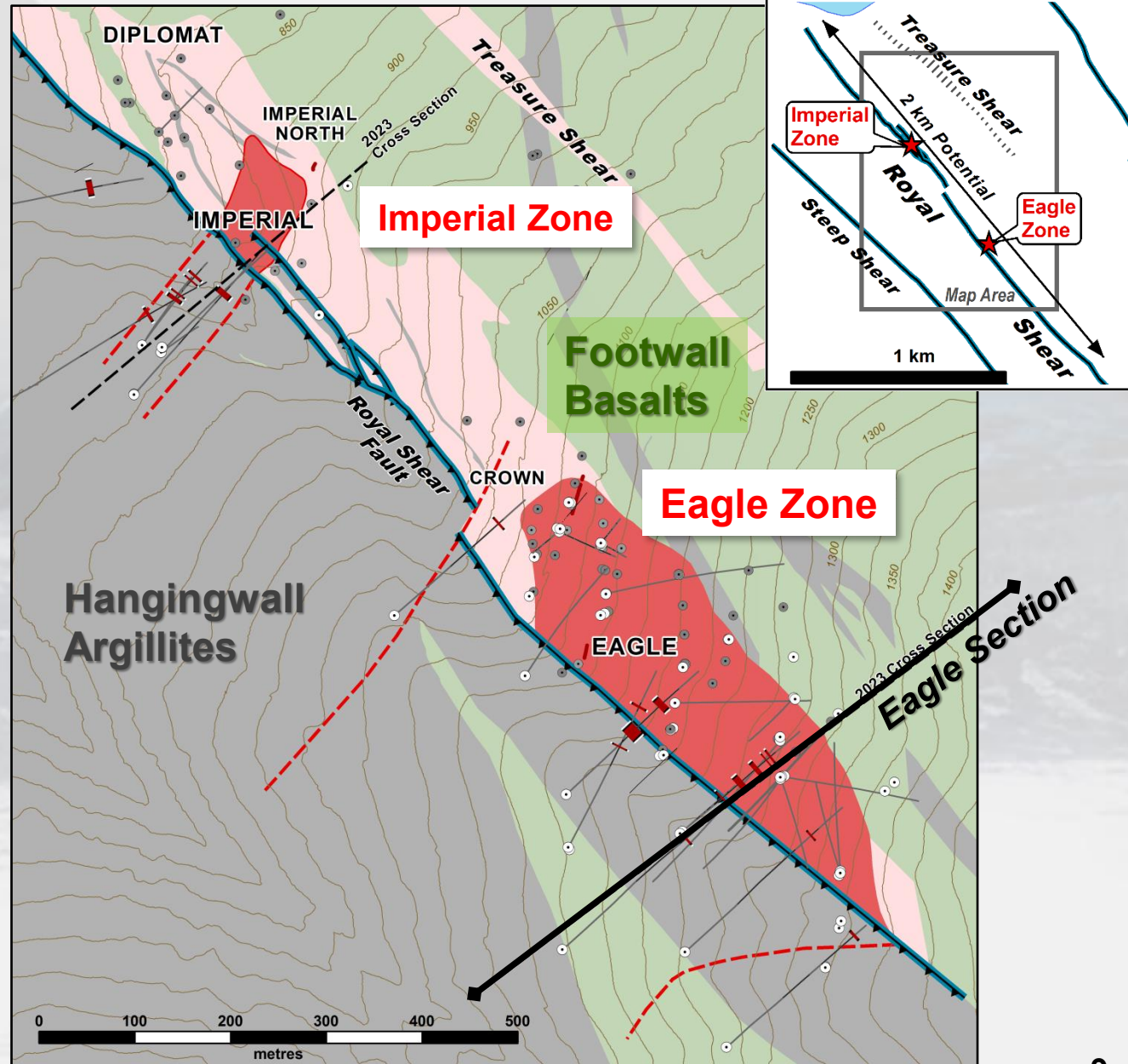
GEOLOGY

ALTERATION

- Ankerite Alteration +/- Quartz

ROCK TYPE

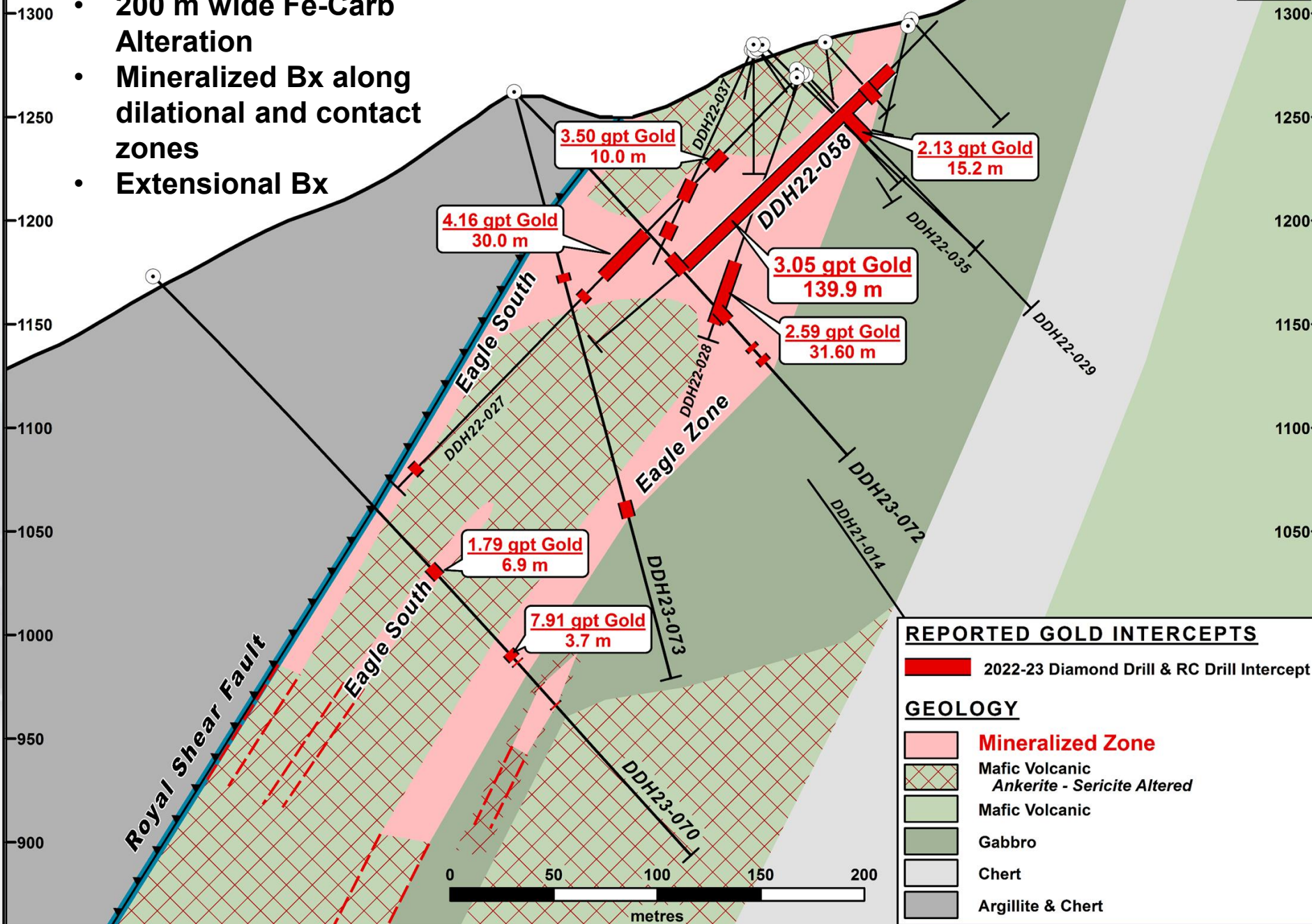
- Mafic Volcanic / Gabbro
- Argillite and Chert

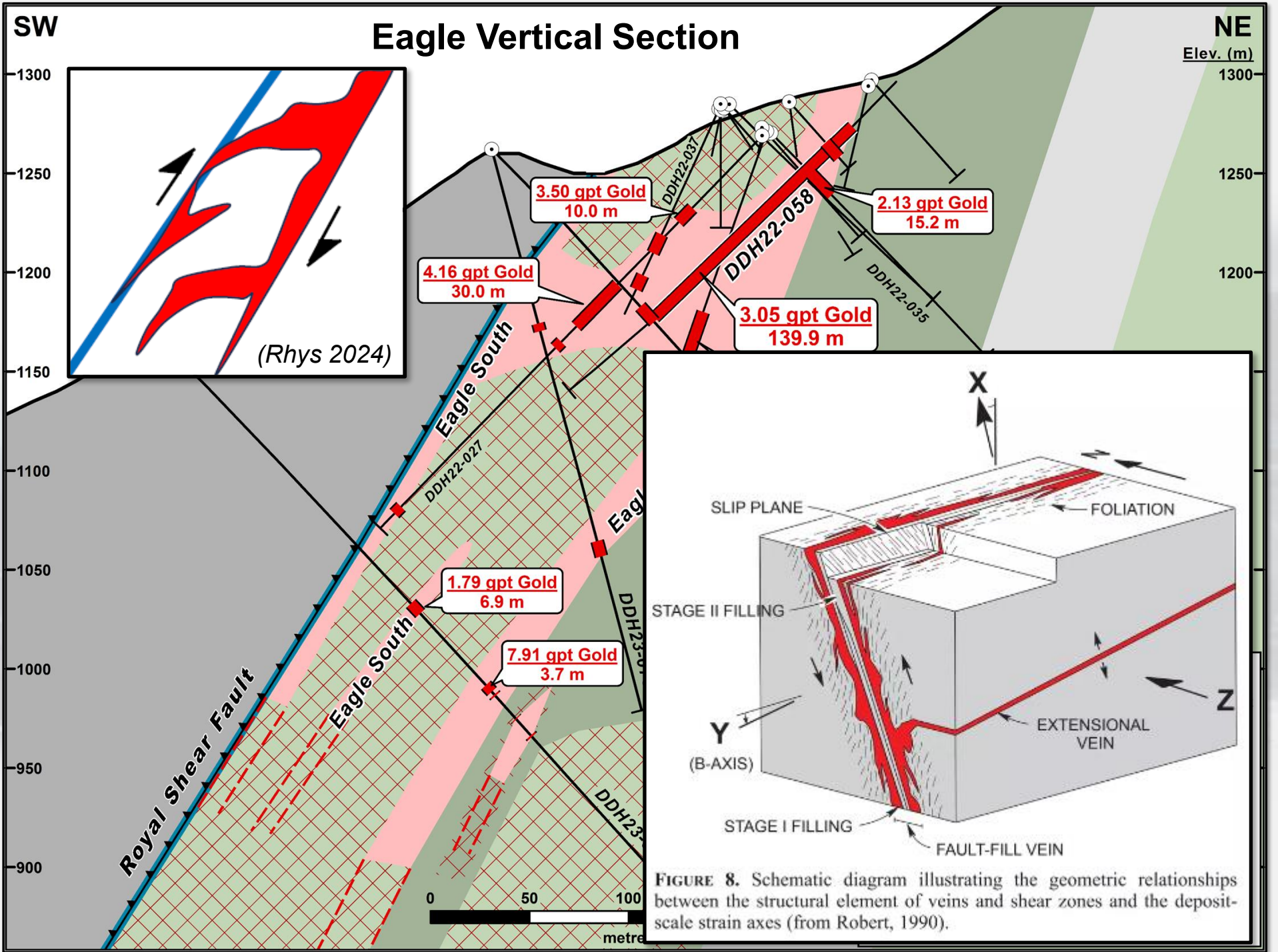


Eagle Vertical Section

- SW**
- RS Reverse Fault
 - 200 m wide Fe-Carb Alteration
 - Mineralized Bx along dilational and contact zones
 - Extensional Bx

NE
Elev. (m)





Reliance Gold Project

DDH21-020 – **15.7 gpt Gold over 24.8 m**

MINERALIZED BRECCIA TEXTURES

Coxcomb / Cockade Quartz-Carb Breccia



@37 m
4.99 gpt Gold over 2.0 m



@49 m
**27.5 gpt Gold /
2.1 m**



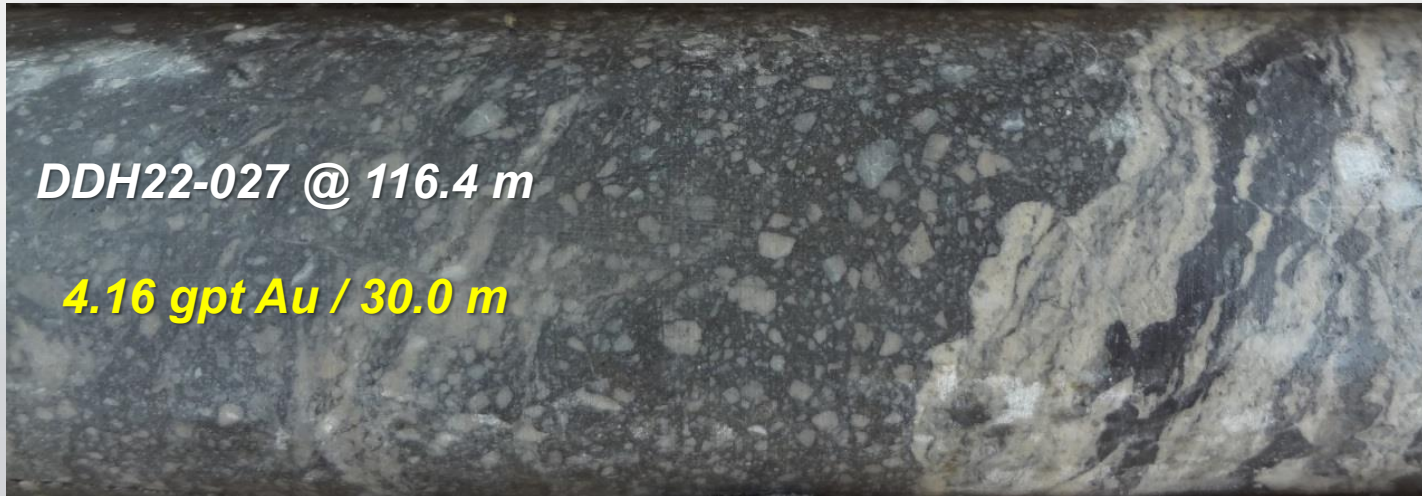
@54 m
16.15 gpt Gold over 2.0 m

NQ Core

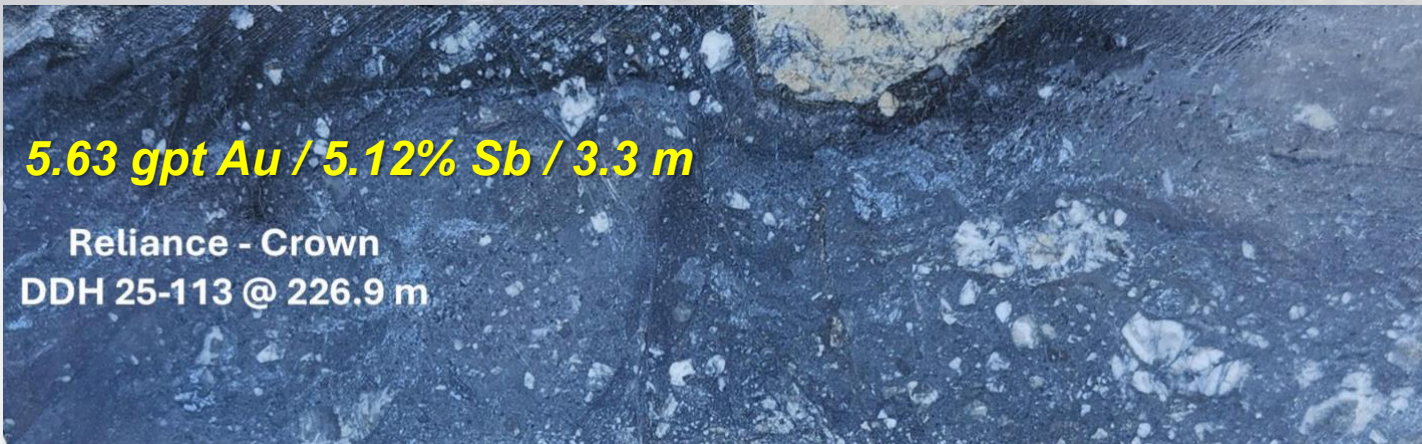


@58 m
15.55 gpt Gold over 0.7 m

Reliance Gold Project Cataclastite Breccia Textures



Fine-grained
crushed py,
aspy, stibnite
with quartz
breccia clasts &
late ankerite
overprint





Mineralized Breccias: Consistent Mineralized Intervals

DDH21-020

Hole ID	From (m)	To (m)	Length (m)	Sample ID	Au g/t	Ag ppm	As ppm	Sb ppm
DDH21-020	25.4	27.4	2	C965316	0.015	0.1	11.9	5.14
DDH21-020	27.4	29.4	2	C965317	0.026	0.25	54.3	45.4
DDH21-020	29.4	31.4	2	C965318	0.07	0.2	73.7	71.7
DDH21-020	31.4	33.3	1.9	C965319	0.033	0.14	23.6	76.1
DDH21-020	33.3	35.3	2	C965321	7.04	1.36	3660	1060
DDH21-020	35.3	37.3	2	C965322	4.99	1.8	2730	2690
DDH21-020	37.3	39.3	2	C965323	18.85	3.61	9250	12100
DDH21-020	39.3	41.3	2	C965324	19.35	3.67	8870	13800
DDH21-020	41.3	43.3	2	C965325	17.55	3.65	8630	3380
DDH21-020	43.3	45	1.7	C965326	11.1	3.12	8270	807
DDH21-020	45	45.9	0.9	C965327	14.45	4.23	7630	609
DDH21-020	45.9	47.9	2	C965328	26.4	2.34	7190	1220
DDH21-020	47.9	50	2.1	C965329	27.5	3.2	6930	9800
DDH21-020	50	51.4	1.4	C965331	6.24	0.75	1650	1340
DDH21-020	51.4	53.4	2	C965332	13.25	3.47	4830	1085
DDH21-020	53.4	55.4	2	C965333	16.15	7.63	5920	4390
DDH21-020	55.4	57.4	2	C965334	16.45	2.71	8400	931
DDH21-020	57.4	58.1	0.7	C965335	15.55	2.73	6850	7940
DDH21-020	58.1	60	1.9	C965336	0.684	0.34	1125	120.5
DDH21-020	60	62	2	C965337	0.029	0.08	18.6	36.1
DDH21-020	62	64	2	C965338	0.038	0.1	21	45.5

**15.7 gpt Au over 24.8 m including
26.96 gpt Au over 4.1 m**

DDH22-027

Hole ID	From (m)	To (m)	Length (m)	Sample ID	Au g/t	Ag ppm	As ppm	Sb ppm
DDH22-027	103.2	105.2	2	H610800	0.161	0.14	136	9.36
DDH22-027	105.2	107.2	2	H610801	0.329	0.1	359	29.5
DDH22-027	107.2	109.2	2	H610802	0.022	0.12	42.1	89.2
DDH22-027	109.2	111.2	2	H610803	0.92	0.39	663	68.6
DDH22-027	111.2	113.1	1.9	H610804	1.9	0.96	2000	231
DDH22-027	113.1	114.1	1	H610805	1.96	0.93	1510	184
DDH22-027	114.1	115.65	1.55	H610806	0.989	0.14	564	205
DDH22-027	115.65	116.5	0.85	H610808	6.19	1.37	3480	226
DDH22-027	116.5	118.2	1.7	H610809	0.152	0.3	204	27.1
DDH22-027	118.2	120.2	2	H610810	0.369	0.24	384	72.9
DDH22-027	120.2	122.2	2	H610811	5.89	2.38	2990	728
DDH22-027	122.2	123.6	1.4	H610813	5.72	0.85	2330	233
DDH22-027	123.6	124.2	0.6	H610814	5.47	1.41	2280	249
DDH22-027	124.2	124.9	0.7	H610815	2.67	0.6	1445	100.5
DDH22-027	124.9	126.9	2	H610816	6.74	1.13	2550	203
DDH22-027	126.9	129.4	2.5	H610817	7.67	1.69	3640	242
DDH22-027	129.4	130.2	0.8	H610818	7.83	5.74	3200	479
DDH22-027	130.2	132.1	1.9	H610819	18.45	3.21	6640	635
DDH22-027	132.1	134.1	2	H610820	2.18	0.46	1040	170.5
DDH22-027	134.1	135.2	1.1	H610821	3.37	0.71	2150	184.5
DDH22-027	135.2	137.2	2	H610822	0.033	0.14	27.7	7.85
DDH22-027	137.2	139.2	2	H610823	1.305	0.75	653	116.5
DDH22-027	139.2	141.2	2	H610824	0.116	0.2	69.7	7.47
DDH22-027	141.2	143.2	2	H610825	0.016	0.14	182.5	16.05
DDH22-027	143.2	145.2	2	H610826	0.013	0.2	172.5	4.14
DDH22-027	145.2	147.2	2	H610827	0.021	0.09	11.8	2.21
DDH22-027	147.2	148.8	1.6	H610828	0.02	0.26	121.5	5.92
DDH22-027	148.8	150.2	1.4	H610829	0.306	0.19	180	110
DDH22-027	150.2	152.1	1.9	H610830	1.82	0.44	727	150.5
DDH22-027	152.1	154.5	2.4	H610831	28.4	4.55	10000	2350
DDH22-027	154.5	156.45	1.95	H610832	0.127	0.3	691	29.2
DDH22-027	156.45	158.45	2	H610834	0.52	0.27	440	18.5
DDH22-027	158.45	160.5	2.05	H610835	0.023	0.13	28.5	8.85

**8.06 gpt Au over 13.5 m including
10.41 gpt Au over 5.5 m
& 28.4 gpt Au over 2.4 m**

Reliance Gold Project Visible Gold in Quartz Veins



DDH24-093 – 147.5 gpt Au / 1.0 m



DDH23-078 – 9.67 gpt Au / 1.2 m

Reliance Gold Project

Best Diamond Drill Holes 2021 to 2025

<u>Zone & DDH</u>	<u>From</u>	<u>g/t X m</u>	<u>Au g/t / Metre</u>
Eagle - 22-058	32.1	426	3.05 gpt / 139.9m
Eagle - 21-020	33.3	389	15.70 gpt / 24.8m
Imperial - 21-009	161.0	210	8.47 gpt / 24.9m
Eagle - 21-006	25.6	210	8.62 gpt / 24.4m
Crown - 24-093	159.9	148	74.29 gpt / 2.0m
Imperial - 25-109	336.0	147	6.74 gpt / 21.8m
Eagle - 23-076	9.3	133	5.80 gpt / 23.0m
Eagle - 22-027	109.2	124	4.16 gpt / 30.0m
Eagle - 24-100	9.9	111	5.15 gpt / 21.6m
Eagle - 22-026	80.4	108	8.06 gpt / 13.5m
Imperial - 25-117	164.8	102	5.13 gpt / 19.8m
Eagle - 22-024	27.0	100	8.41 gpt / 12.0m
Eagle - 22-036	35.4	97	7.65 gpt / 12.7m
Eagle - 24-104	7.0	91	6.51 gpt / 14.0m
Eagle - 22-031	124.9	90	7.58 gpt / 11.9m
Eagle - 22-045	35.1	84	7.31 gpt / 11.6m
Eagle - 21-004	1.0	84	4.44 gpt / 19.0m
Crown - 25-116	288.7	84	8.01 gpt / 10.5m
Imperial - 23-065	212.8	83	8.98 gpt / 9.3m
Eagle - 22-028	97.0	82	2.59 gpt / 31.6m
Crown - 25-122	322.7	73	14.03 gpt / 5.2m
Imperial - 23-066	306.5	72	17.28 gpt / 4.2m
Imperial - 24-106	608.3	68	4.47 gpt / 15.3m
Crown - 25-125	176.0	61	6.10 gpt / 10.0m

Lower Imperial Discovery

Reliance Gold Project

Best Diamond Drill Holes 2021 to 2025

<u>Zone & DDH</u>	<u>From</u>	<u>g/t X m</u>	<u>Au g/t / Metre</u>
Eagle - 22-058	32.1	426	3.05 gpt / 139.9m
Eagle - 21-020	33.3	389	15.70 gpt / 24.8m
Imperial - 21-009	161.0	210	8.47 gpt / 24.9m
Eagle - 21-006	25.6	210	8.62 gpt / 24.4m
Crown - 24-093	159.9	148	74.29 gpt / 2.0m
Imperial - 25-109	336.0	147	6.74 gpt / 21.8m

86 of 127 DDH holes returned > 10 gram*m

- 134 Assay Composites
 - Multiple Composites per Hole
- Average Comp. Drill Length = 9.8 m
- Wt. Ave Grade = 4.74 gpt Au

23 of 127 DDH holes returned > 70 gram*m

Eagle - 22-028	97.0	82	2.59 gpt / 31.6m
Crown - 25-122	322.7	73	14.03 gpt / 5.2m
Imperial - 23-066	306.5	72	17.28 gpt / 4.2m
Imperial - 24-106	608.3	68	4.47 gpt / 15.3m
Crown - 25-125	176.0	61	6.10 gpt / 10.0m

Lower Imperial Discovery

Reliance Gold Project Mineral Resource Estimate

January 8, 2026			Inferred	
Zone	Au Cutoff (gpt)	Tonnes (Mt)	Gold Grade (gpt)	Contained Gold (Moz)
OP	0.3	15.6	2.23	1.12
UG	1.0	4.0	2.58	0.33
TOTAL	0.3, 1.0	19.6	2.30	1.45

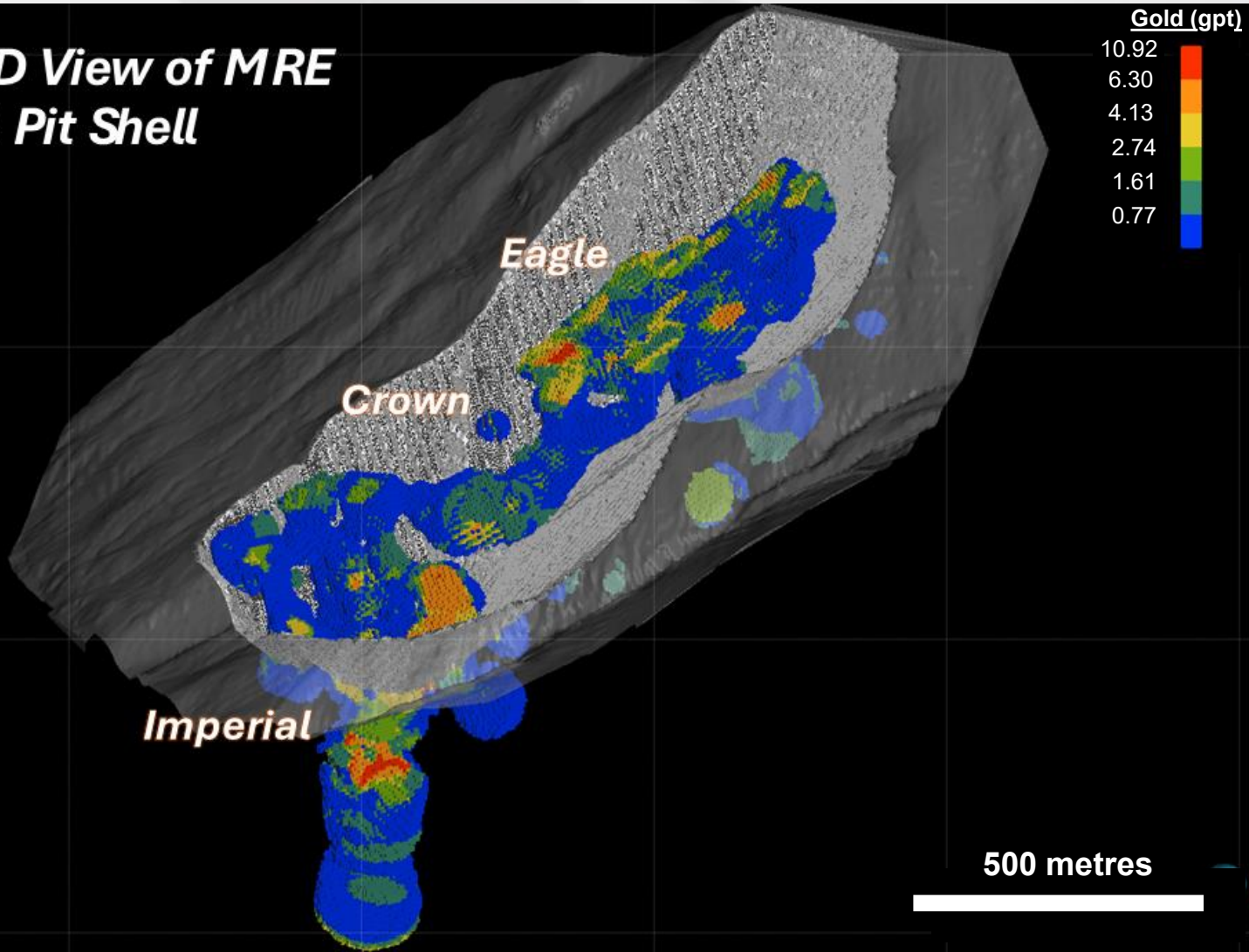
The Mineral Resource Estimate (“MRE”) was prepared for Endurance Gold Corp. by Ginto Consulting Ltd. in accordance with NI 43-101 – Standards of Disclosure for Mineral Projects. Please see the news release dated January 19, 2026 for additional disclosure for the MRE with an effective date of January 8, 2026.

Mineral Resources, which are not Mineral Reserves, do not have demonstrated economic viability. There is no certainty that all or any part of the mineral resources estimated will be converted into mineral reserves. The estimate of Mineral Resources may be materially affected by environmental, permitting, legal, title, taxation, sociopolitical, marketing, changes in global gold markets or other relevant issues.

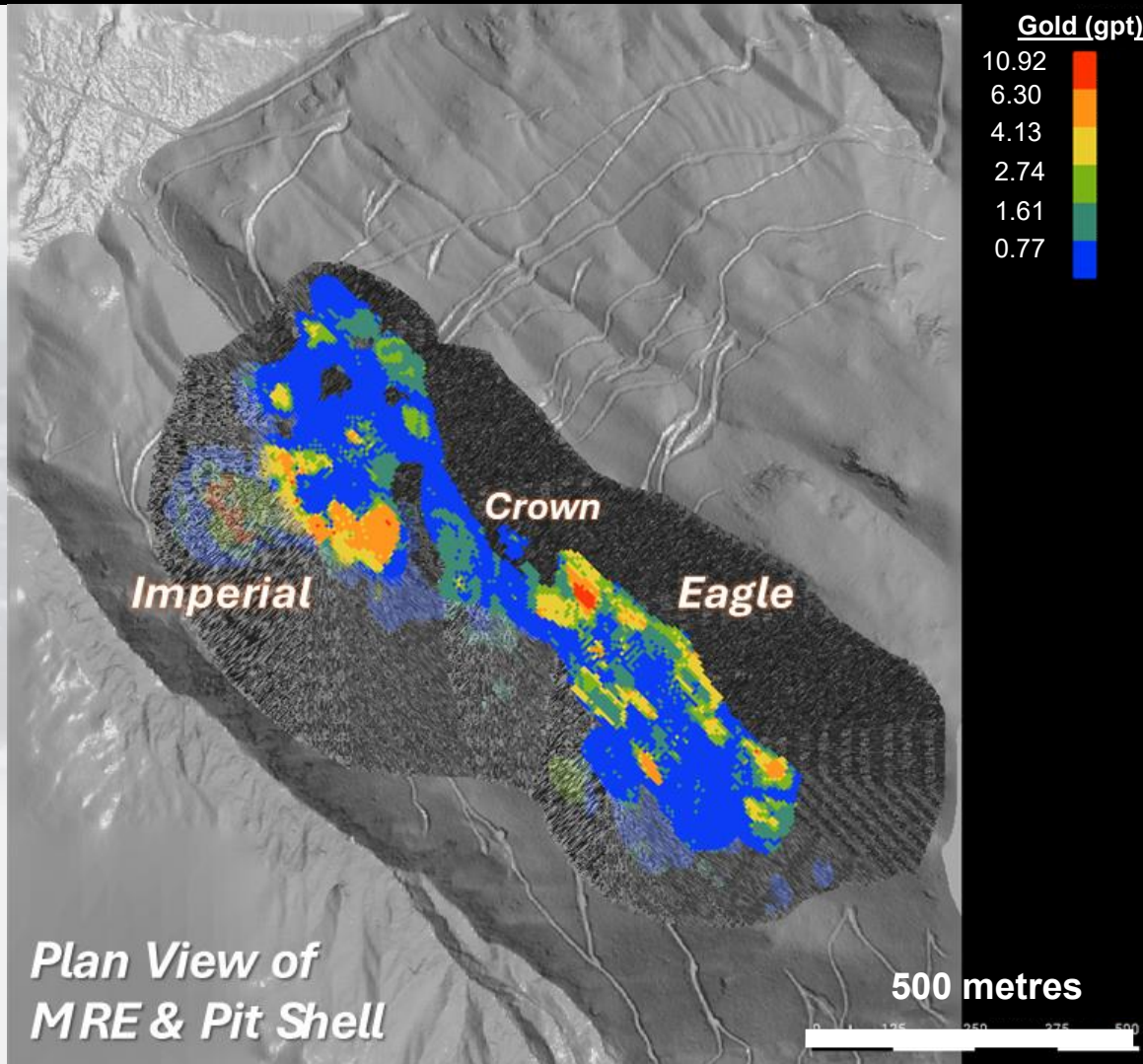
The CIM definitions were followed for the classification of the mineral resources. The inferred mineral resources have a lower level of confidence and must not be converted to mineral reserves. It is reasonably expected that the majority of inferred mineral resources could be upgraded to indicated mineral resources with continued exploration.

Reliance Gold Project Mineral Resource Estimate & Pit Shell - 3D View

**3D View of MRE
& Pit Shell**



Reliance Gold Project Mineral Resource Estimate & Pit Shell - Plan View



Reliance Gold Project 2026 Mineral Resource Estimate Plan View



Inferred MRE Surface Projection

Gold (gpt) in 5 m Blocks

- ◆ 6.31 - 10.92
- ◆ 4.14 - 6.30
- ◆ 2.75 - 4.13
- ◆ 1.62 - 2.74
- ◆ 0.78 - 1.61
- ◆ 0.07 - 0.77



DRILLING BY ENDURANCE GOLD

- 2021-2025 Diamond Drill Hole
- Reverse Circulation (RC) Drill Hole

GEOLOGY

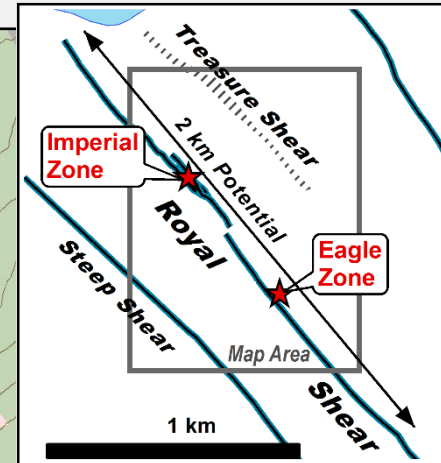
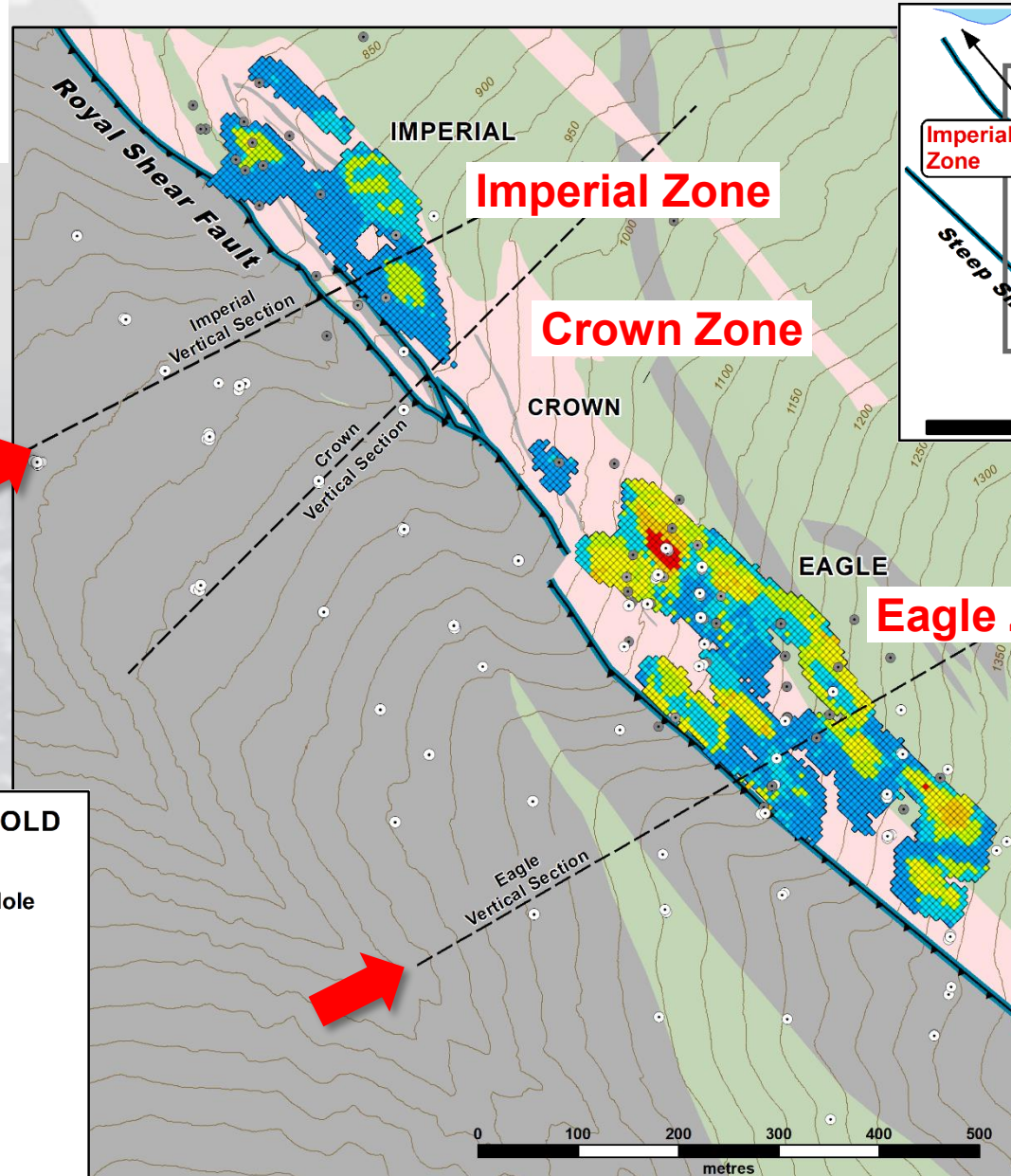
ALTERATION

Ankerite Alteration +/- Quartz

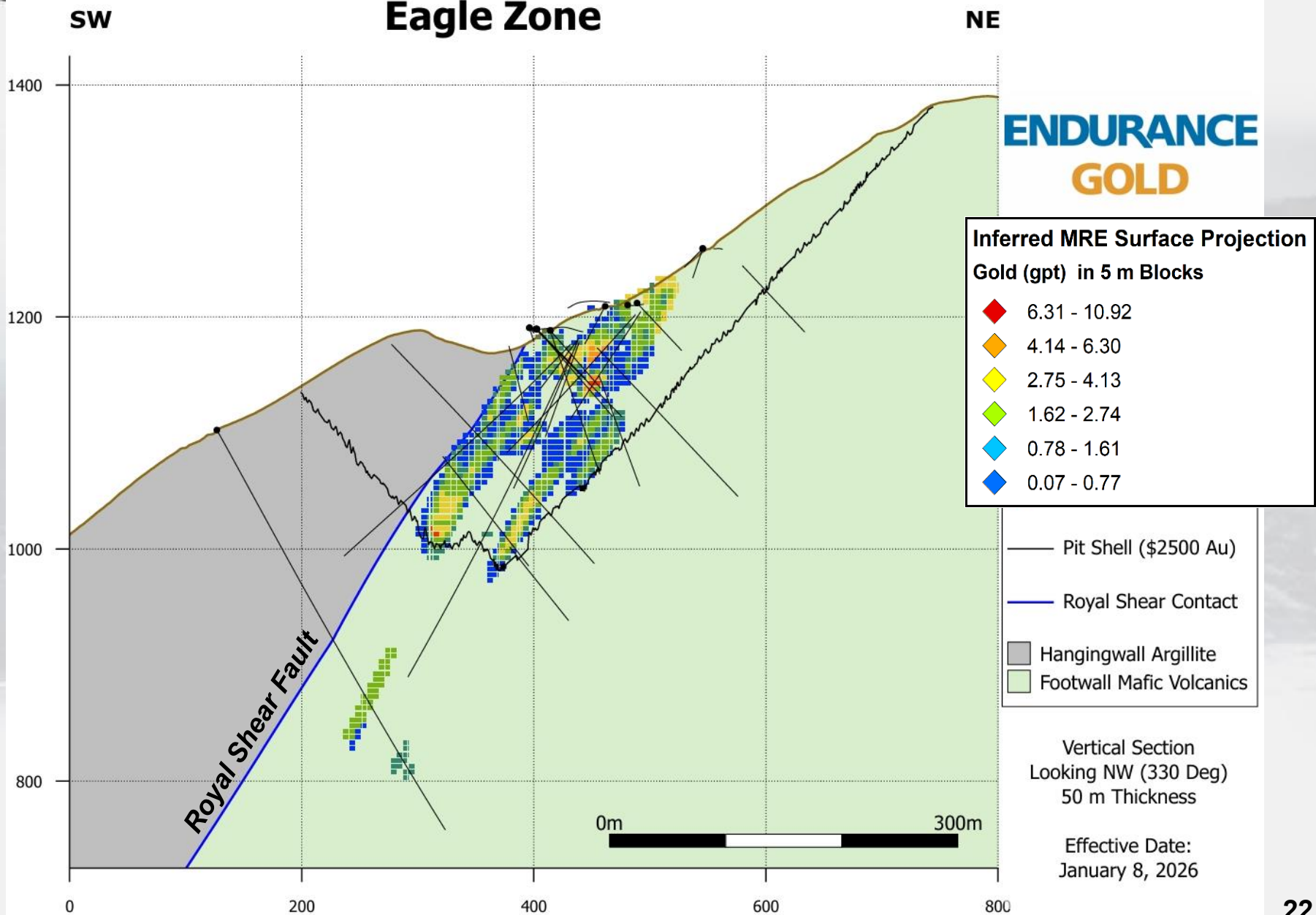
ROCK TYPE

Mafic Volcanic / Gabbro

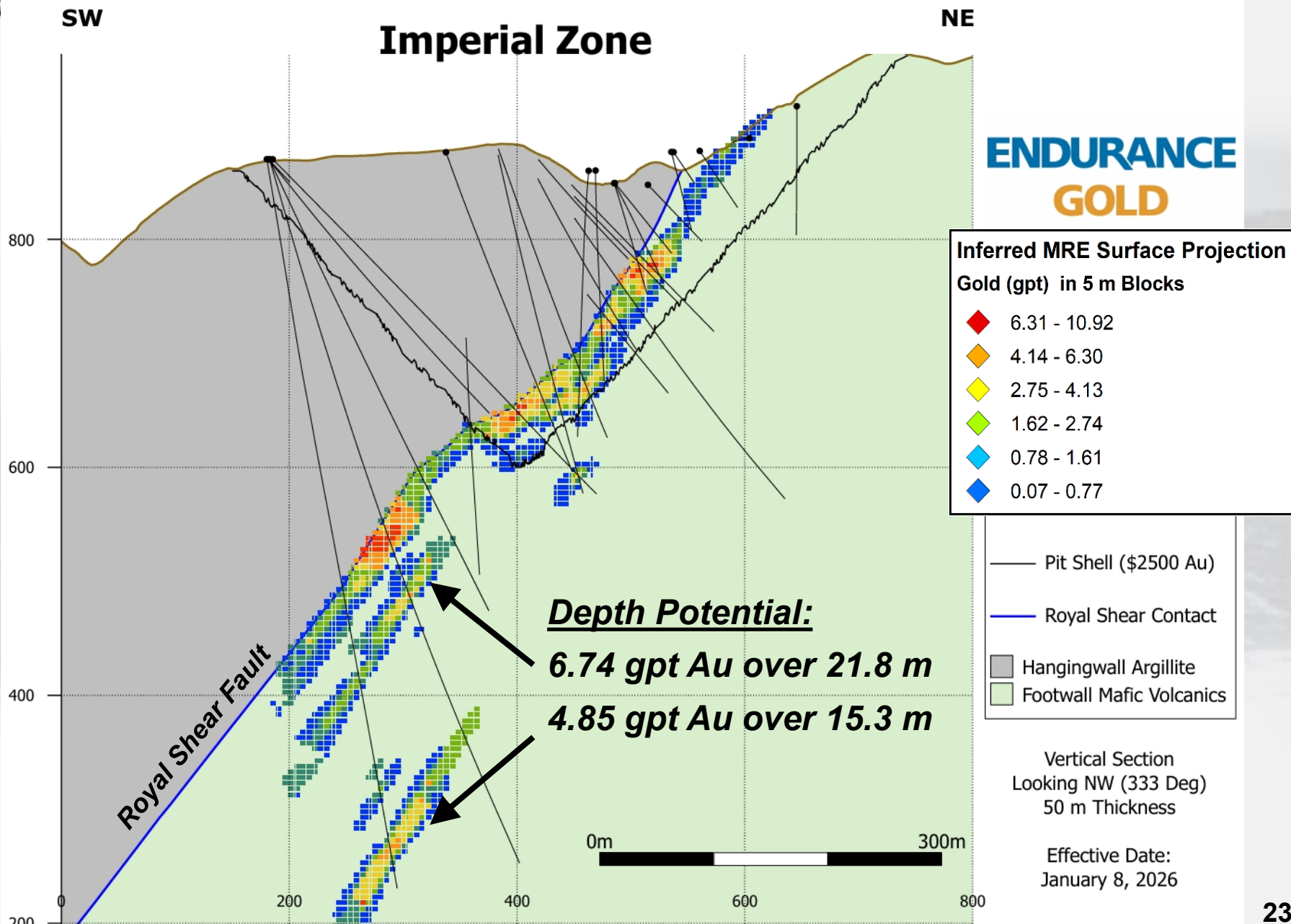
Argillite and Chert



Reliance Gold Project Eagle Zone Cross Section with Pit Shell



Reliance Gold Project Imperial Zone Cross Section with Pit Shell

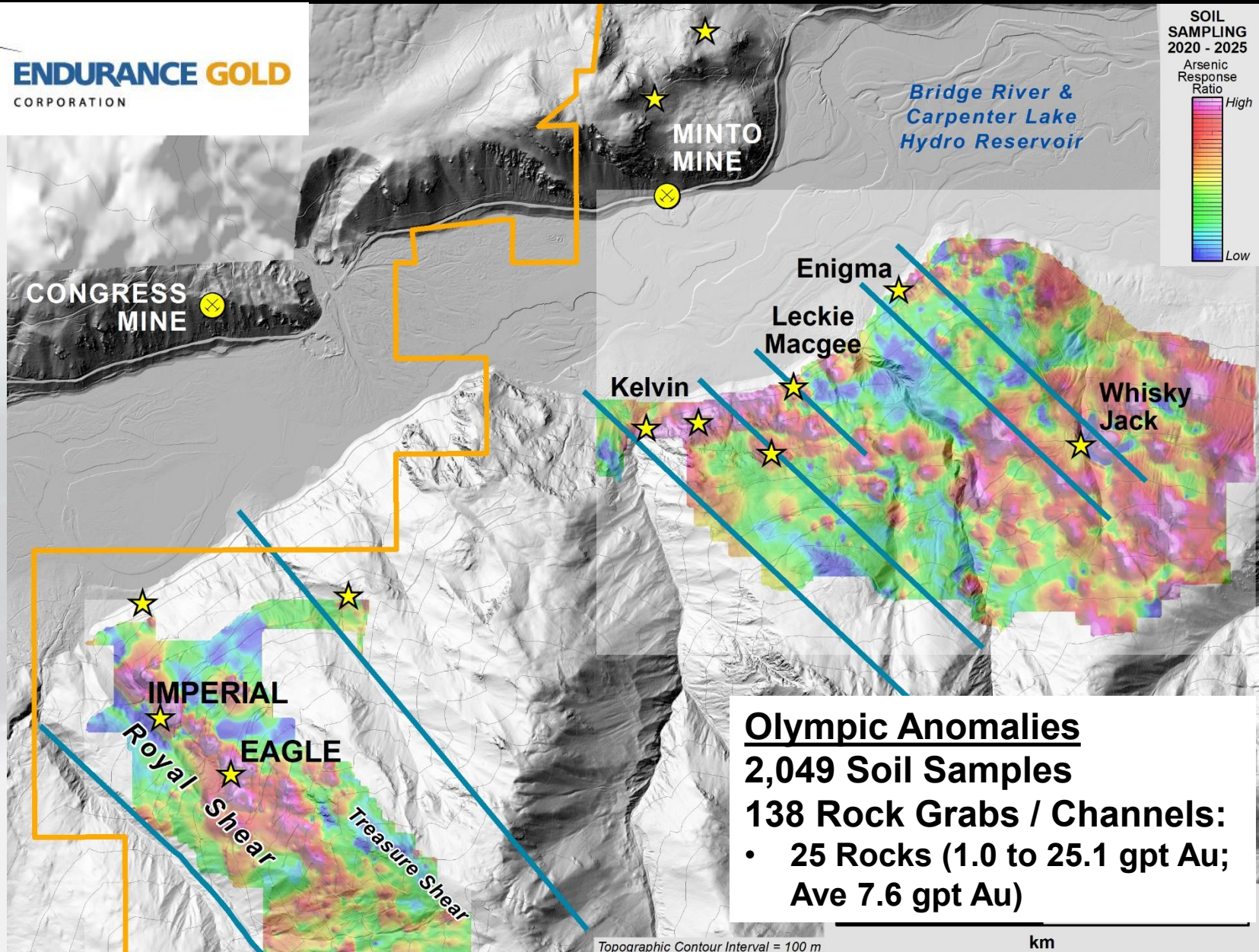


Reliance Gold Project – Exploration Upside

Royal Shear & Olympic Geochemical Anomalies



ENDURANCE GOLD
CORPORATION

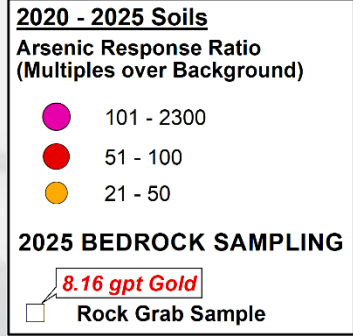
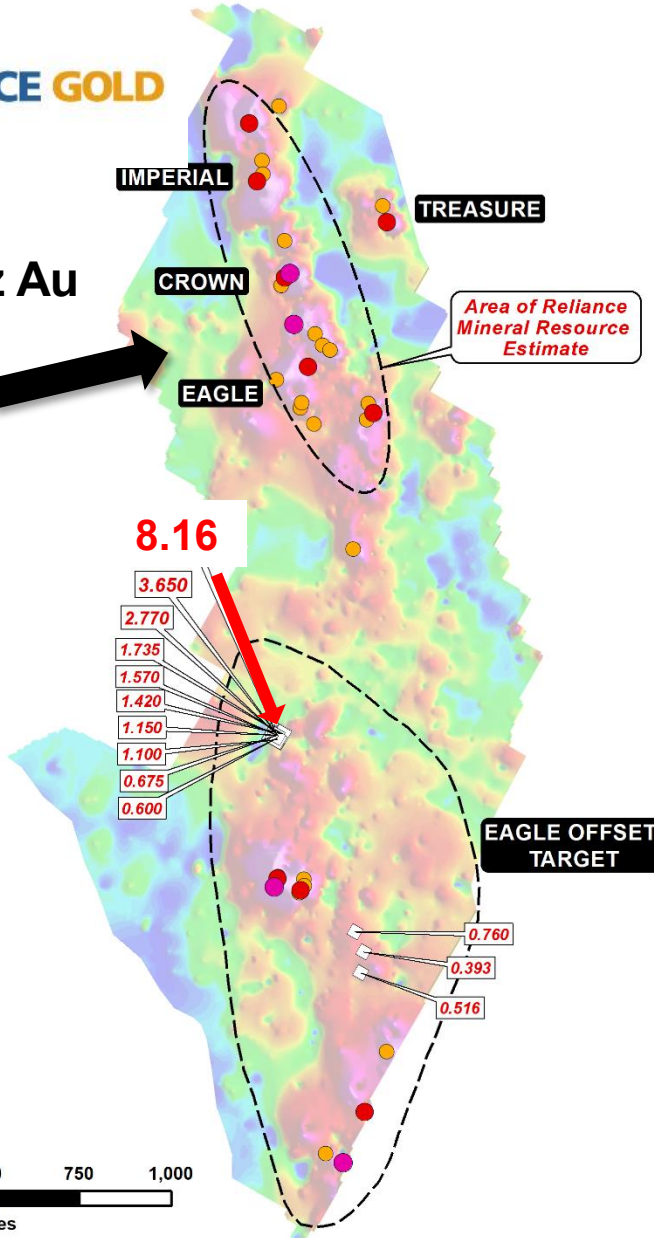
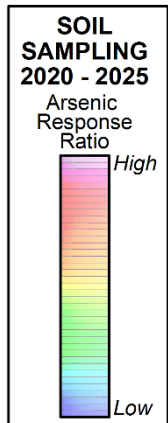


Reliance Gold Project Eagle Offset Geochemical Target



ENDURANCE GOLD
CORPORATION

**1.45 Moz Au
MRE**



Eagle Offset Anomaly:

- 500 m south of Eagle Zone
- 1,300 m x 500 m anomaly
- Coincidental Magnetic-Low, Gold-in-Bedrock, & Au-As-Sb Soil Geochem
- Offset of Royal Shear structure, or new, untested parallel structure?

- **8,000 m diamond drilling**
 - Expand and Upgrade the near-surface Inferred MRE.
 - Drilling targeting high-grade below pit shell

Hole ID	Drill Length Composite	Target Zone
DDH25-109	6.74 gpt Au over 21.8 m	Imperial Zone
DDH24-106	4.85 gpt Au over 15.3 m	Imperial Zone
DDH23-078	3.81 gpt Au over 9.35 m	Crown Zone
DDH23-070	3.93 gpt Au over 9.15 m	Eagle Zone

- **Eagle Offset and Olympic Anomalies**
 - Excavate new trails and channel samples
 - RC drilling
- **Metallurgy Testwork Ongoing**
 - Optimize gold concentrate & Determine antimony recovery
- Commence **Preliminary Economic Assessment** (“PEA”)

Corporate Snapshot

Shares Outstanding <i>(April 8, 2026)</i>	198.8m
Market Capitalization <i>(C\$0.49 – April 8, 2026)</i>	C\$97.4 m
Options <i>(C\$0.20 – C\$0.34)</i>	8.5 m
Warrants <i>(C\$0.17 – C\$0.90)</i>	6.8 m
Fully Diluted <i>(April 8, 2026)</i>	214.1 m
Working Capital <i>(Sept 30, 2025)</i>	C\$1.67 m*



**Insiders
own
over 60%**

* Excludes \$8.3m from FT & HD Units closed March 11 and \$3.7m from exercise warrants & stock options

Key People

Robert T. Boyd
President, CEO & Director

Darren O'Brien
Vice President Exploration

Teresa Cheng
CFO & Corporate Secretary

Richard Gilliam
Director

H. Ross Arnold
Director

Robert Pease
Director

J. Christopher Mitchell
Director



www.endurancegold.com

Suite 1212 – 666 Burrard Street
Vancouver, BC V6C 2X8 Canada
Toll Free Phone: 877-624-2237

EDG: TSX.V | ENGF: OTC Pink | Frankfurt: 3EG