

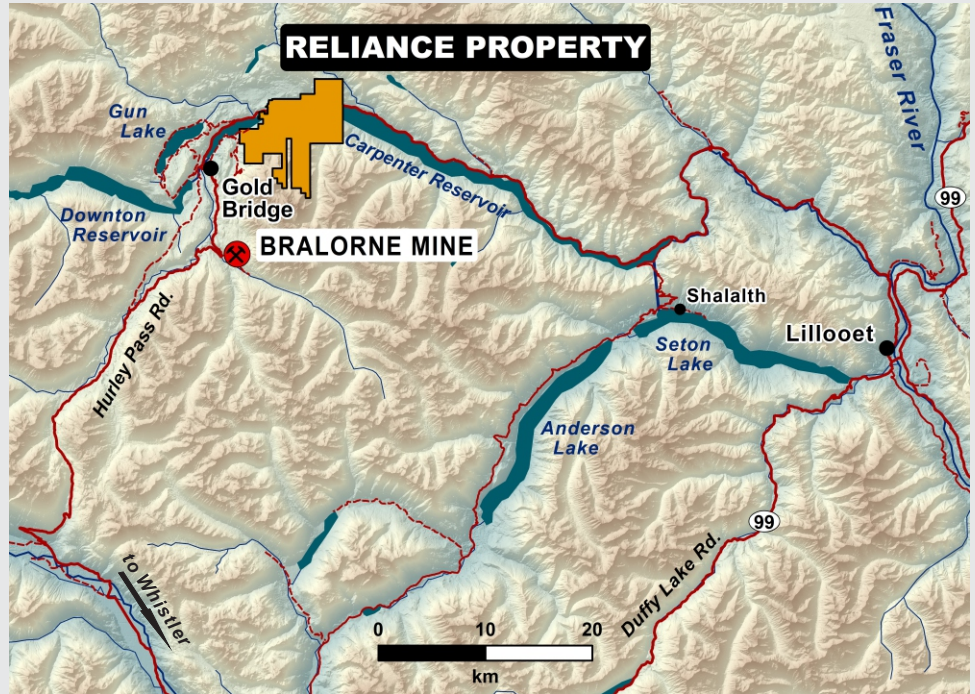
ENDURANCE GOLD
CORPORATION

Spring / Summer 2026

A Promising New Gold Discovery, Gold Bridge, BC

The Reliance Gold Project is a mineral exploration project about 5km east of Gold Bridge, British Columbia and about 10 km from the historic Bralorne gold mining district. Endurance Gold Corporation has been exploring this project area seasonally since 2020 and is back with an active program in 2026.

The Reliance Project is at the exploration stage, defining the size and grade of a new drill discovery. Mineral exploration is an early step in understanding the quantity of minerals in the bedrock. Most exploration and/or bedrock discoveries do not ultimately become mines. However, recent exploration results at Reliance have been promising, with the definition of a +1 million ounce gold deposit.



2026 Field Activities

Exploration at Reliance occurs during spring, summer, and fall. Planned 2026 activities include:

- Diamond drilling in and around the gold discovery
- Smaller-scale percussion drilling on new target areas
- Drill equipment access along trails, and some excavation of new drill trails and drill pads
- Geological fieldwork involving surface sampling of soils and rocks
- Environmental baseline monitoring programs of drainages in the active exploration areas
- Cultural studies and heritage monitoring

Diamond (Core) Drilling



What Local People May Notice in 2026

- Increased vehicle traffic on the Grey Rock forestry road
- Contract drill crews and geologists living in Gold Bridge and Gun Lake areas
- Seasonal field crews and support personnel, with participation from St'at'imc and Gold Bridge communities.
- Support involving deliveries of fuel, groceries, and supplies
- St'at'imc environmental and cultural monitors involved with Endurance crews



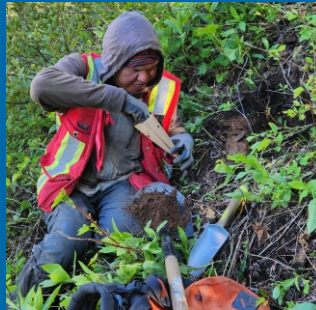
Where possible, existing roads, trails, and previously disturbed areas are optimized to minimize new disturbance.

We work with several St'at'imc First Nations on environmental, heritage, employment, and contracting partnership activities. This has included heritage studies, cultural monitoring, environmental monitoring, and local service and support contracts.

Job Opportunities

Exploration activities are seasonal, and employment opportunities also temporary.

Endurance Gold hopes to find new ways to partner with local communities to share contractor and employment opportunities



Environmental & Heritage Stewardship

Environmental & heritage considerations are an important part of exploration planning & field activities at Reliance. Work completed to date has included:

- Baseline water monitoring programs
- Cultural monitoring during exploration activities
- Heritage and archaeological studies
- Environmental field assessments
- Ongoing reclamation and site management

Looking Ahead

Exploration at Reliance is ongoing, and additional geological, environmental, and technical studies are planned as the Project continues to advance through the evaluation stages.

Any future mining project would require additional studies, engagement, environmental review, community partnerships, and permitting before any decisions could be made regarding development.

Questions and feedback from community members are welcome at community@endurancegold.com